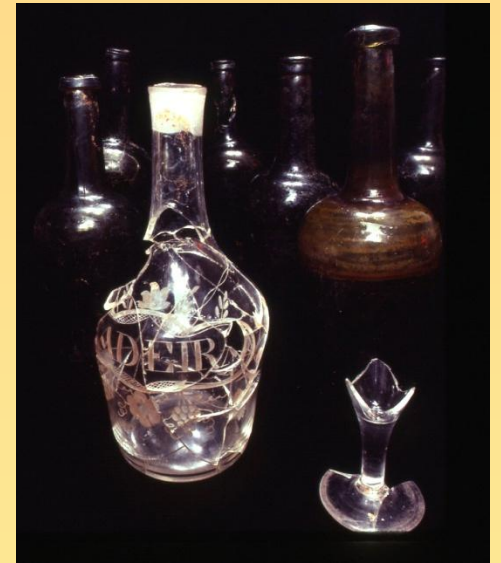


“In Digging My Dry Well”: Examining Early Life on Monticello Mountain



Beth Clites, Lynsey Bates

Monticello Department of Archaeology

SHA 2008



Monticello Mountain and Vicinity

University of Virginia Rotunda

Charlottesville

Montalto

Moores Creek

Meadow Creek

Monticello

Pantops

Meadow Branch

Rivanna River

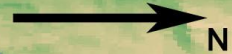
Lego

Tufton

Shadwell

Portobello

Milton



Monticello Department of Archaeology



South Pavilion, South Dependency, and Kitchen Yard



Map of the Monticello Mountaintop

Note the location of the Dry Well



South Dependency
Wing

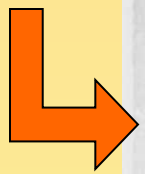
South Pavilion

Dry Well

MRS-1

Memorandum Page, ca. 1770

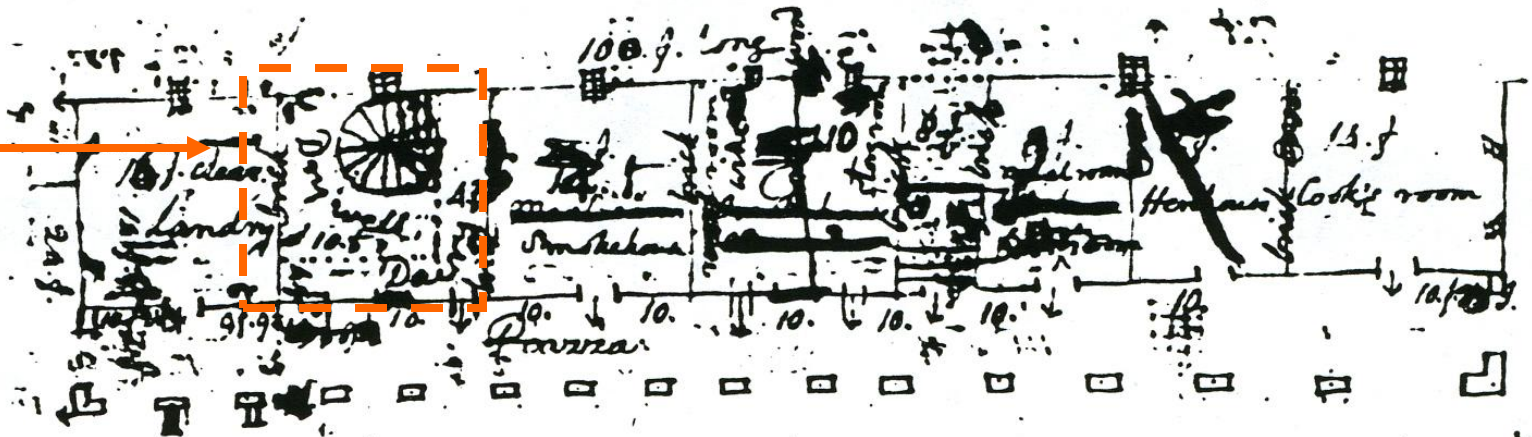
“in digging my dry well, at the depth of 14f. I observed one digger, one filler, one drawer at the windlass with a basket at each end of his rope very accurately gave one another full employment [sic] but note it was a yellow rotten stone with a great many hard stones as large as a man’s head and some larger, or else the digger would have had time to spare. They dug and drew out 8. cubical yds in a day”



... a new one, or clarification of compass from Double to ...
Fin all. to be made for holding in the lap, or laying on
a table as light ^{and portable} as possible. the wood deal increased with
with mahogany. the keys ivory, plate and sharps tortoise
shell. as few strings as possible for the compass, i. e. to
make one string do for 2 or 3 keys, others put a string
for every key, which is not so well. to be made at
Hamborough in Germany: plenty of spare strings wanted.
every possible precaution to prevent the rattling of the keys.
four good fellows, a lad & two girls of abt
16. each in 8 1/2 hours dug in ^{of mountain clay} my cellar, a place
3. f. deep, 9. f. wide & 10. f. long = ¹⁸ cubical yds.
under these disadvantages, to wit; a very old
day which obliged them to be very often warming;
under a cover of planks, so low, that in about half
the work their stroke was not more than 2/3 of a
good one; they eat their breakfast in the time
which one of them went to cook; they were
obliged to keep one or two constantly hauling
away the earth to prevent it's rolling in again
from if I think a ^{midling} hand in 12. hours
(including his breakfast) would dig & haul
the earth of 8 cubical yds, in the same soil.
in digging my dry well, at the depth
of 14 f. I observed one digger, one filler,
one drawer at the windlass with a basket
at each end of his rope very accurately
gave one another full employment.
but note it was a yellow rotten stone
with a great many hard stones as large
as a man's head and some larger, or else
the digger would have had time to spare.
They dug and drew out 8. cubical yds in a day

N-59 (recto) Plans for Dependency Extending from South Pavilion

Dry Well



Pitch on North side 9 of 6. on South about 10 of 6.

15

on average 9 of 6 + 1 of 1 below floor? = 10 of 6 9.

South side	103 ft. x 11 = 1133 sq. ft.	x 18 bricks = 20,394	} = 77,014 brick
North side	103 ft. x 11 = 1133 sq. ft.	x 18 bricks = 20,394	
Partitions	59 ft. x 11 = 649 sq. ft.	x 18 bricks = 11,682	
9 partitions	135 ft. x 11 = 1485 sq. ft.	x 18 bricks = 26,730	

Date: Aug. 2, 1771

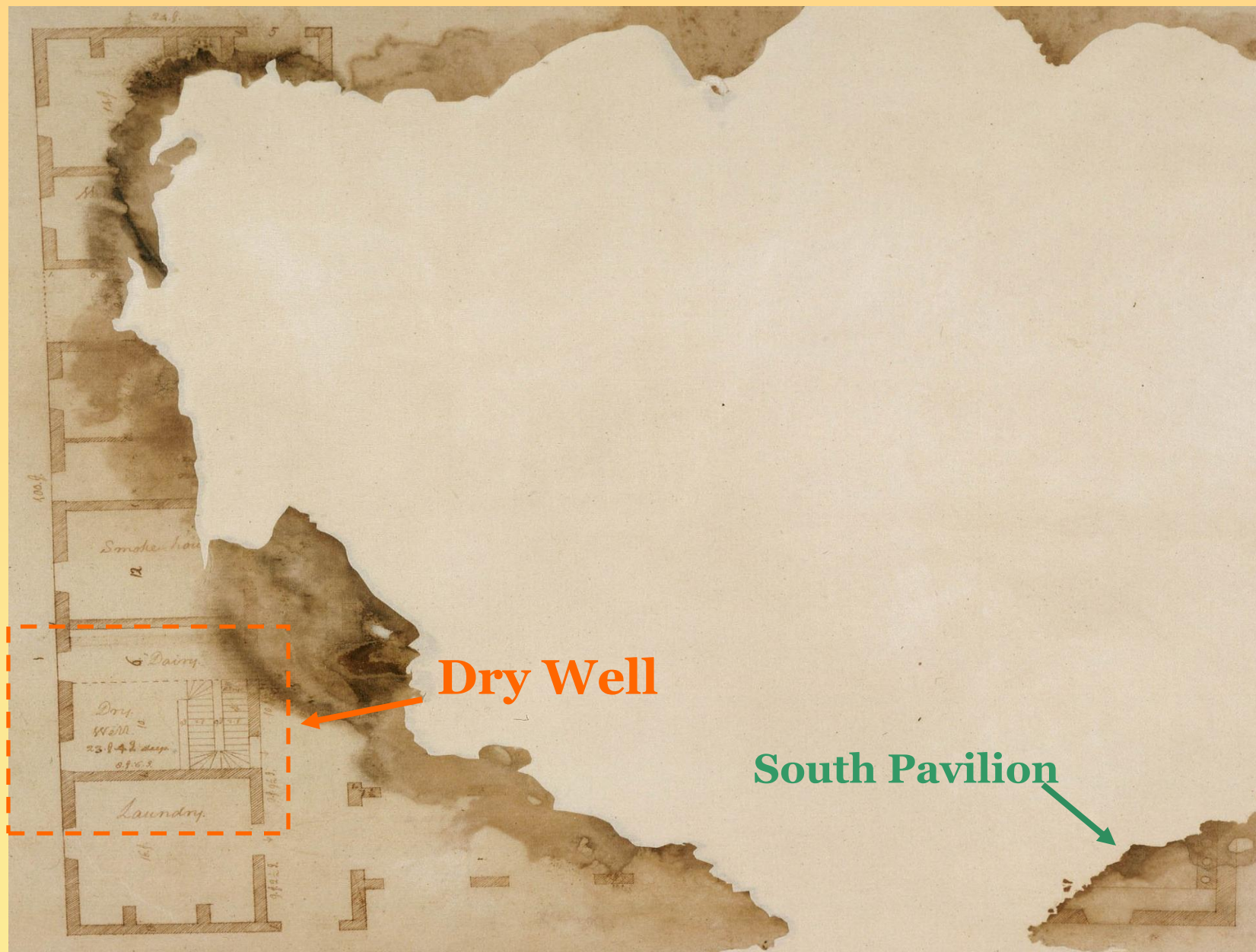
if 3 of the 9 partitions are wood, it will deduct 8,910 which leaves 68,904 brick



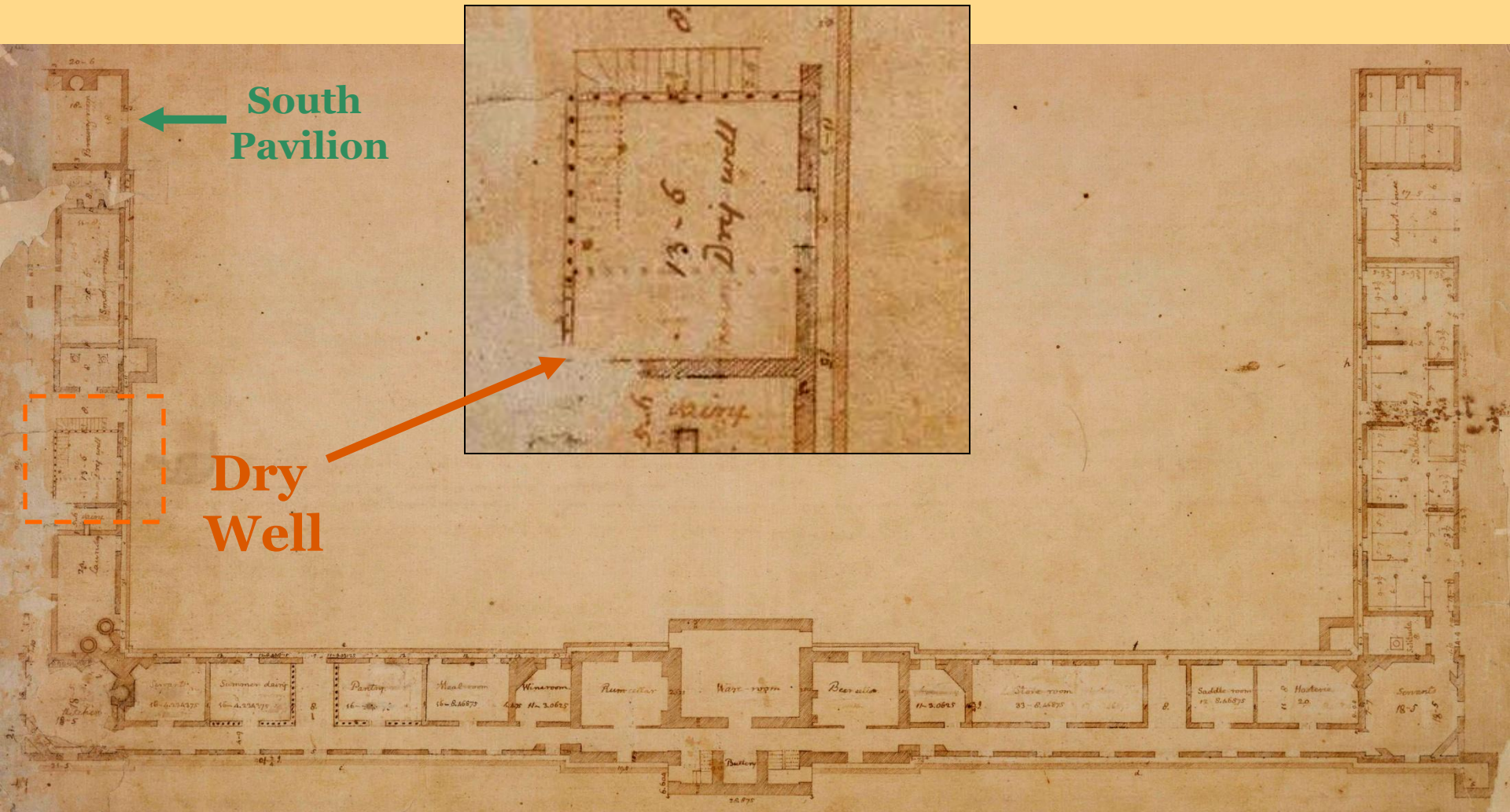
Aug. 2, 1771. The whole height above kitchen floor must be but 14 ft. 6 in. The pediment above the cornice is 6 ft. or 7 ft. pitch including cornice is 8 ft. 6 in. The cornice is 8 ft. 9 in. The key stone each abt. 9 = 17 ft. 7 in. The height of arch then is about 7 ft. and the breadth 4 ft. 6 in. by Palladio pt. 10. and the jambs about 2 ft. so that arch and jamb are 6 ft. 1 in. 16 courses. The crown may form kitchen 8 ft. in the clear which steps up the arch toward the end. The arch 7 ft. jamb 3 ft. then will be arch to entry door. arch must be elliptical.

14M 9365

N32 – Plans for Dependency Extending from South Pavilion



N-56: Plans for Specialty Rooms Below Monticello

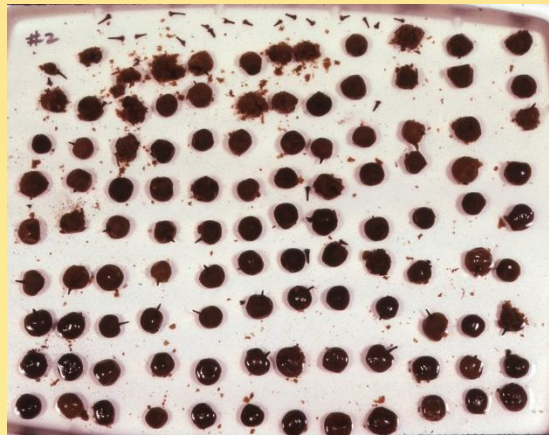


Thomas Jefferson Papers, An Electronic Archive: Architectural Drawings, circa 1772-1819. The Massachusetts Historical Society, 2003. N-56.

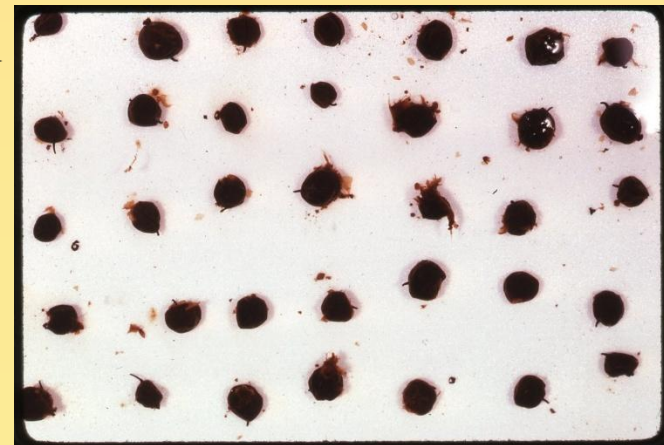
Six
In Situ
Wine Bottles



Contents of "Sealed" Wine Bottles



Cranberries



Cherries



Buried Wine Bottles at Wetherburn Tavern, Williamsburg VA



Black and White photos: Hume, Ivor Noel. Colonial Williamsburg Archaeological Series No. 3: Archaeology and Wetherburn's Tavern. Williamsburg: Colonial Williamsburg Inc., 1969.

Color photo: Poole, Meredith. "A Short History of Archaeology at Colonial Williamsburg." Colonial Williamsburg.
http://research.history.org/Archaeological_Research/Features/History.cfm

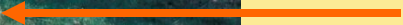


MONTICELLO
DRY WELL
1.5.83



Approximate Location of Dry
Well from South Pavilion

Beginning Dry Well Excavations

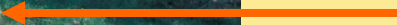


Approximate Location of Dry Well from South Pavilion

Completion of Dry Well Excavations



Beginning Dry Well Excavations

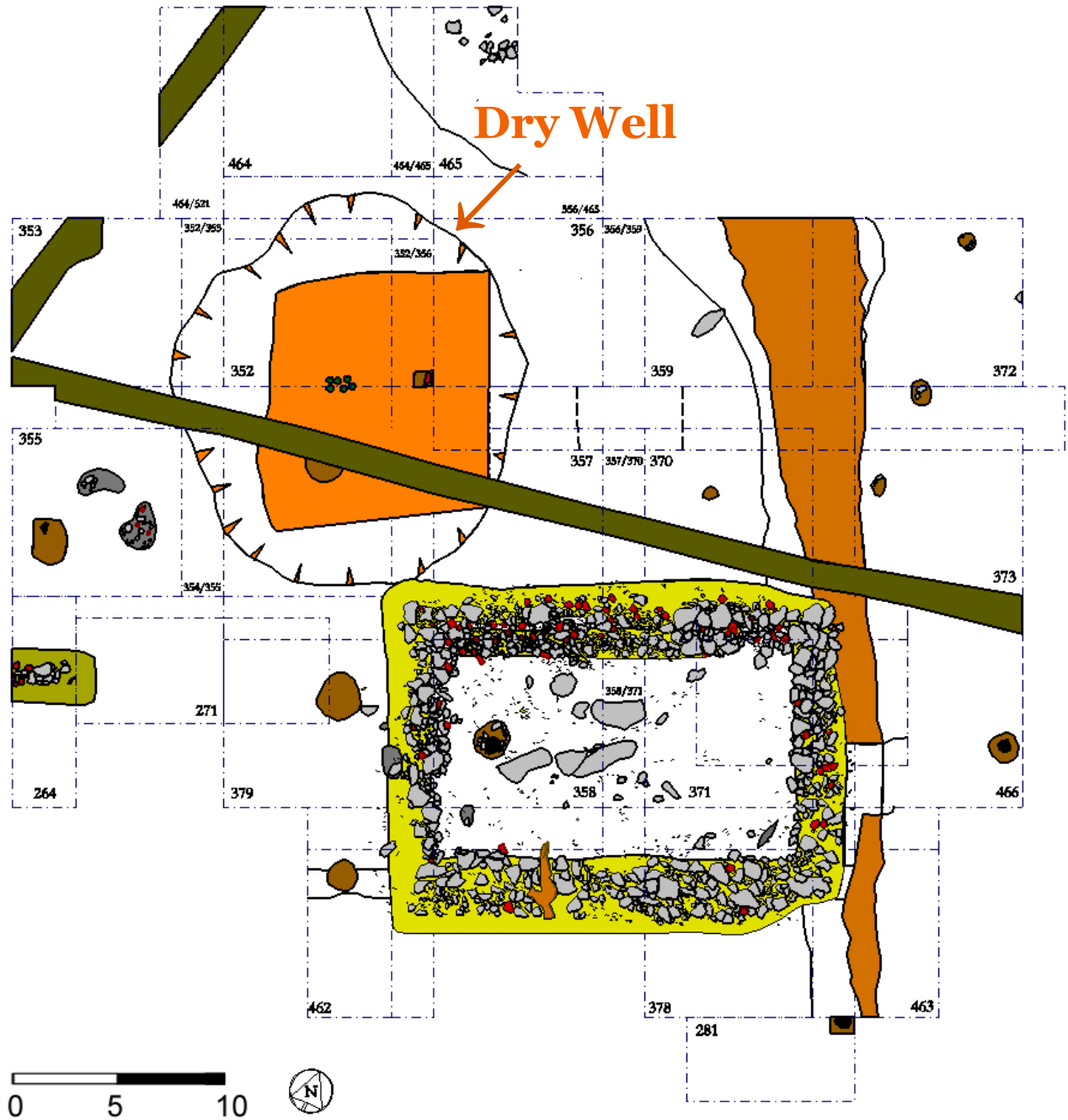


Approximate Location of Dry Well from South Pavilion

Dry Well Area Plan Drawing

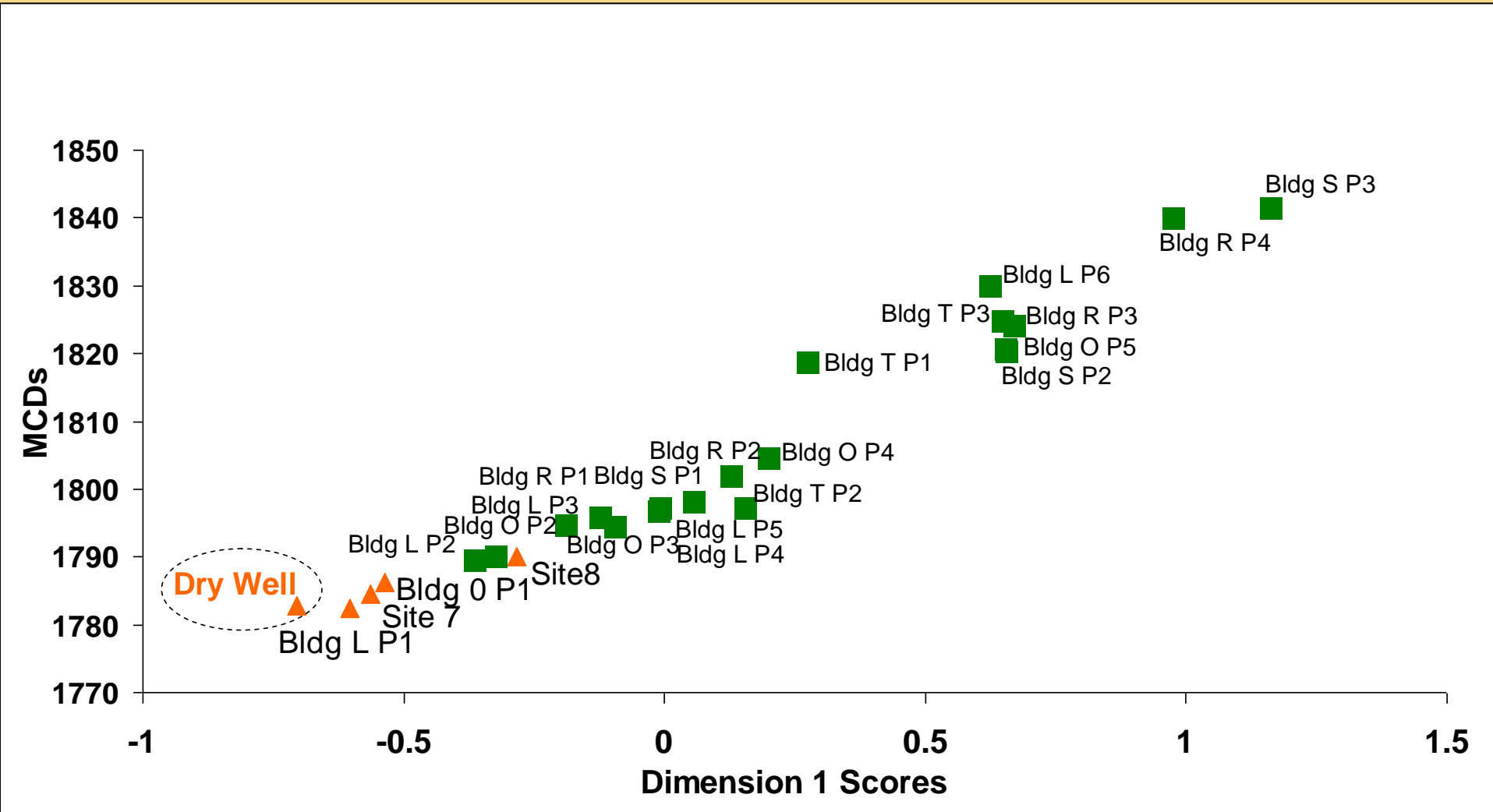
Utility Lines →

Dry Well

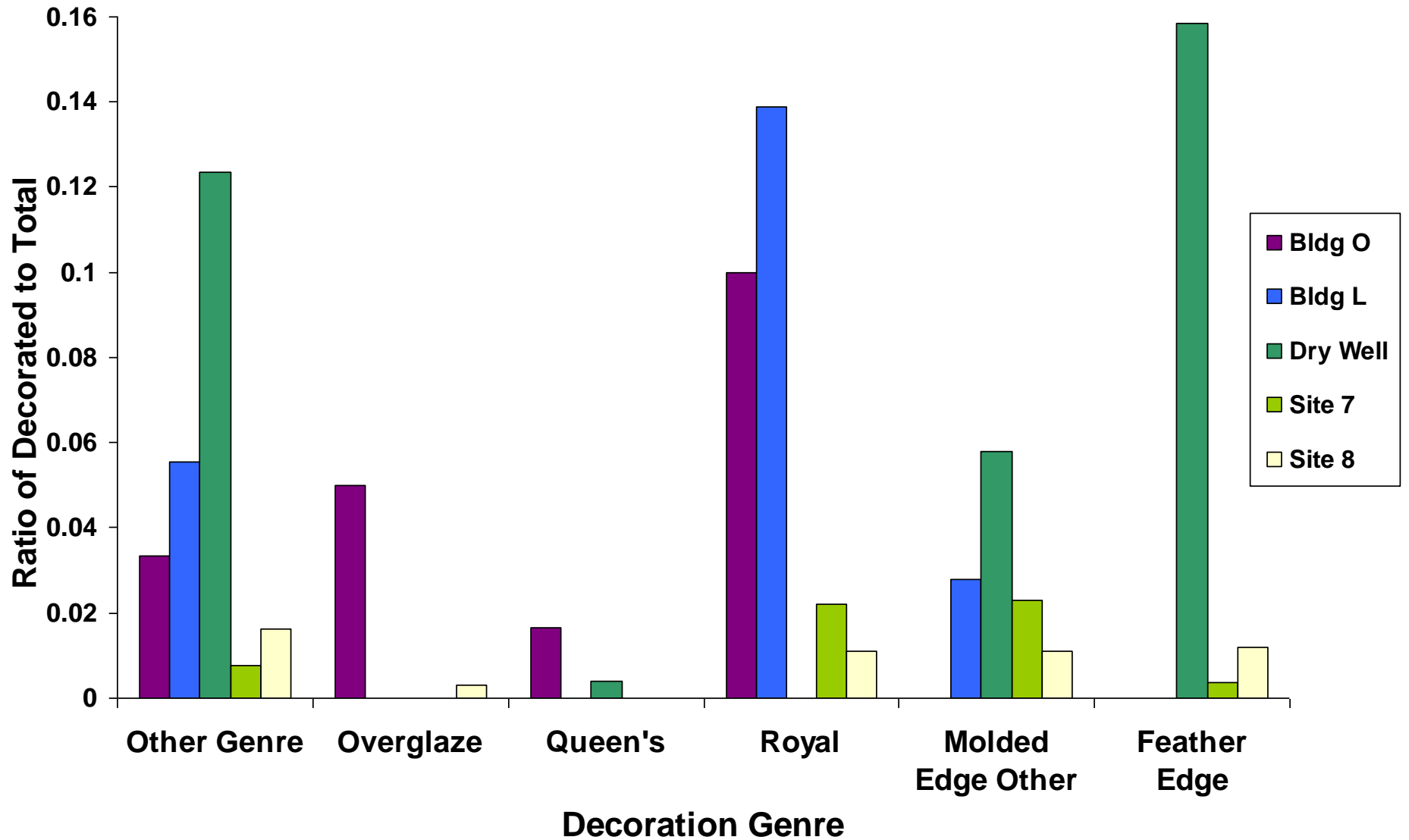


Courtesy of Don Gaylord

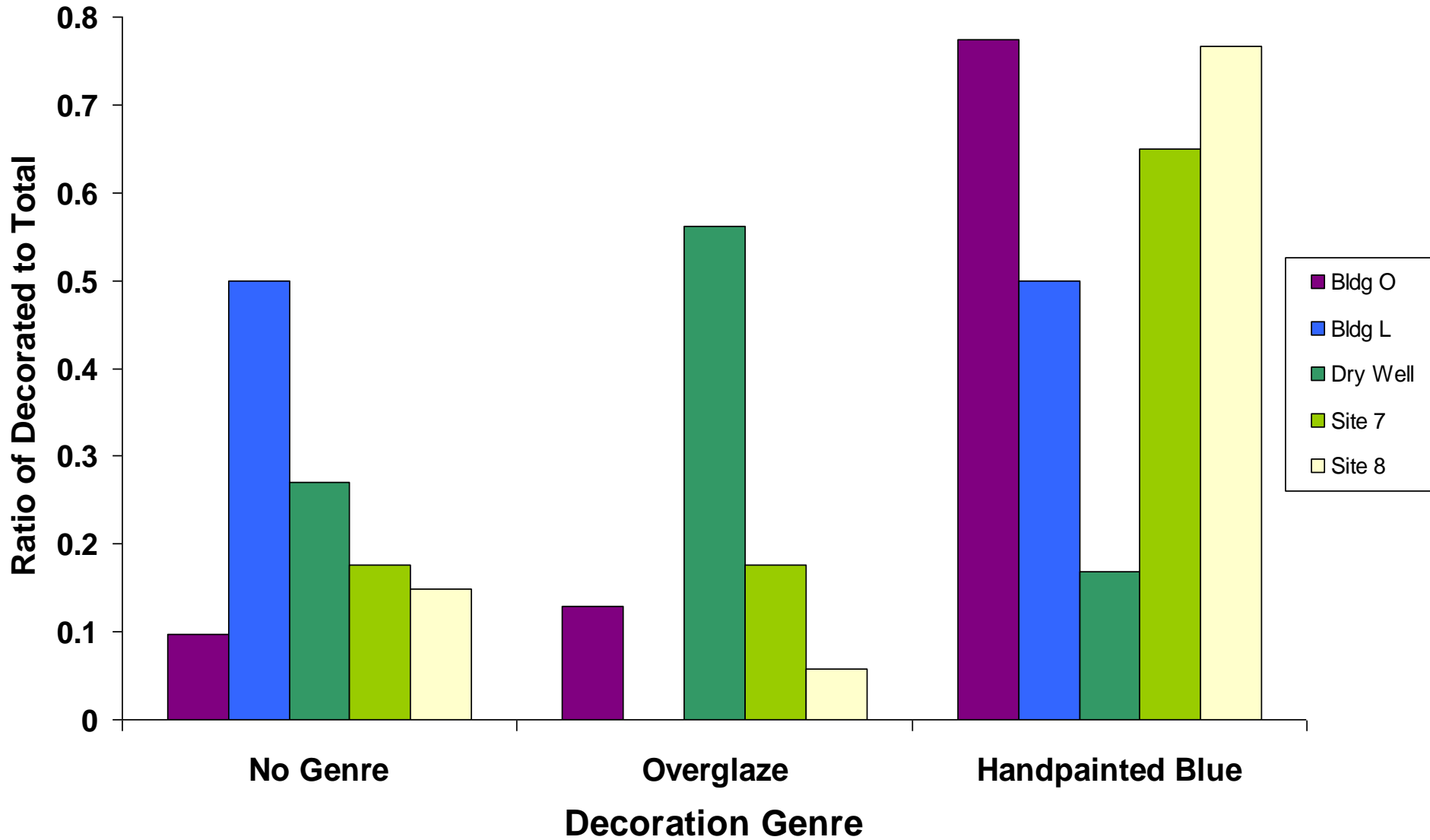
Plot of MCDs and Dim. 1 Scores



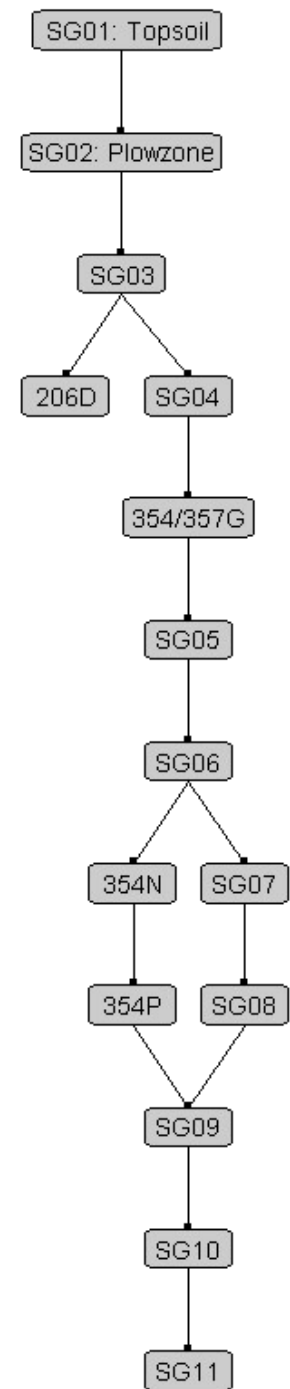
Creamware Decoration by Genre



Porcelain Decoration by Genre



Dry Well Harris Matrix



Total Counts by Artifact Category

CATEGORY	COUNT
General Artifacts	4450
Ceramics	1879
Glass	1854
Tobacco Pipes	94
Buckle	9
Button	7
Utensil	7
TOTAL	8300

Ceramic Counts by Ware Type

WARE TYPE	COUNT
Creamware	850
White Salt Glaze	327
Chinese Porcelain	242
Delftware and Tin Enamel	204
Redware	83
Coarse EW unid.	42
British Stoneware	32
Fulham	27
Buckley	13
Pearlware	12
Whieldon Type	12
Refined EW unid.	9
Non-Chinese Porcelains	7
North Midlands Slip	5
Whiteware	4
Westwerwald	3
American Stoneware	2
Ironstone	2
Stoneware unid.	2
Native American	1
TOTAL	1879

Ceramic Counts by Form

FORM	COUNT
Unid: Tableware	856
Unidentifiable	450
Unid: Teaware	178
Unid: Utilitarian	128
Saucer	89
Bowl	40
Plate	35
Mug/can	25
Flower Pot	22
Teabowl	18
Basket	17
Platter	10
Teacup	3
Storage Vessel	3
Chamberpot	2
Tureen	2
Pitcher/ewer	1
TOTAL	1879



MCDs by Contexts and SGs

Context	MCD
357AD	1768
354M	1770
356F	1771
357H	1771
357AC	1771
352H	1774
352L	1775
357G	1776
352P	1778
352AB	1778
356E	1779
356G	1779
352AC	1780
356AC	1786

SG	MCD	Sample Size
4	1778	307
6	1776	1671
7	1771	329
8	1778	654
9	1775	163
10	1780	484
11	1776	155
Feature MCD	1783	3763
BLUE MCD	1786	3763

SGs Arranged Chronologically

SG	MCD	Sample Size
7	1771	329
9	1775	163
6	1776	1671
11	1776	155
4	1778	307
8	1778	654
10	1780	484
Feature MCD	1783	3763
BLUE MCD	1786	3763

Tobacco Pipe TPQs

Stratigraphic Group	Sum	Quantity x 64 ^{ths}	Average	Mean Date
SG03	15	61	4.07	1776.26
SG04	15	56	3.73	1789.01
SG05	0	N/A	N/A	N/A
SG06	17	74	4.35	1765.31
SG07	4	17	4.25	1769.25
SG08	4	16	4	1778.81
SG09	5	22	4.4	1763.51
SG10	2	8	4	1778.81
SG11	7	28	4	1778.81
Total	69	282	4.09	1775.48



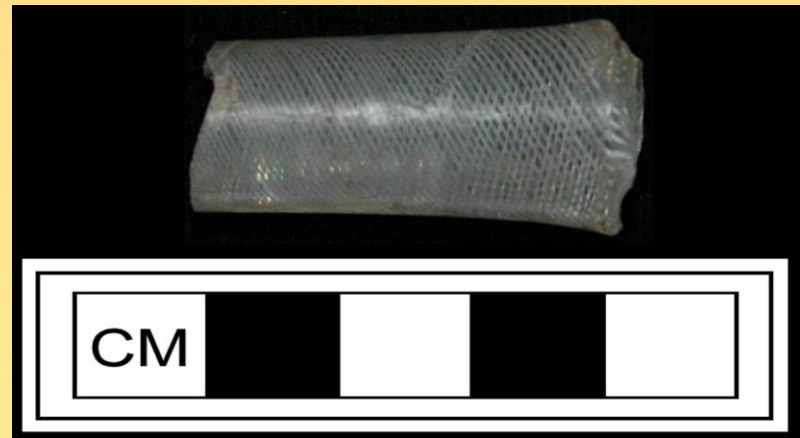
Glass Decoration TPQs

Labeled wine bottle
decanter with copper
wheel engraved
“MADEIRA” label and
botanical elements

1760 – 1775



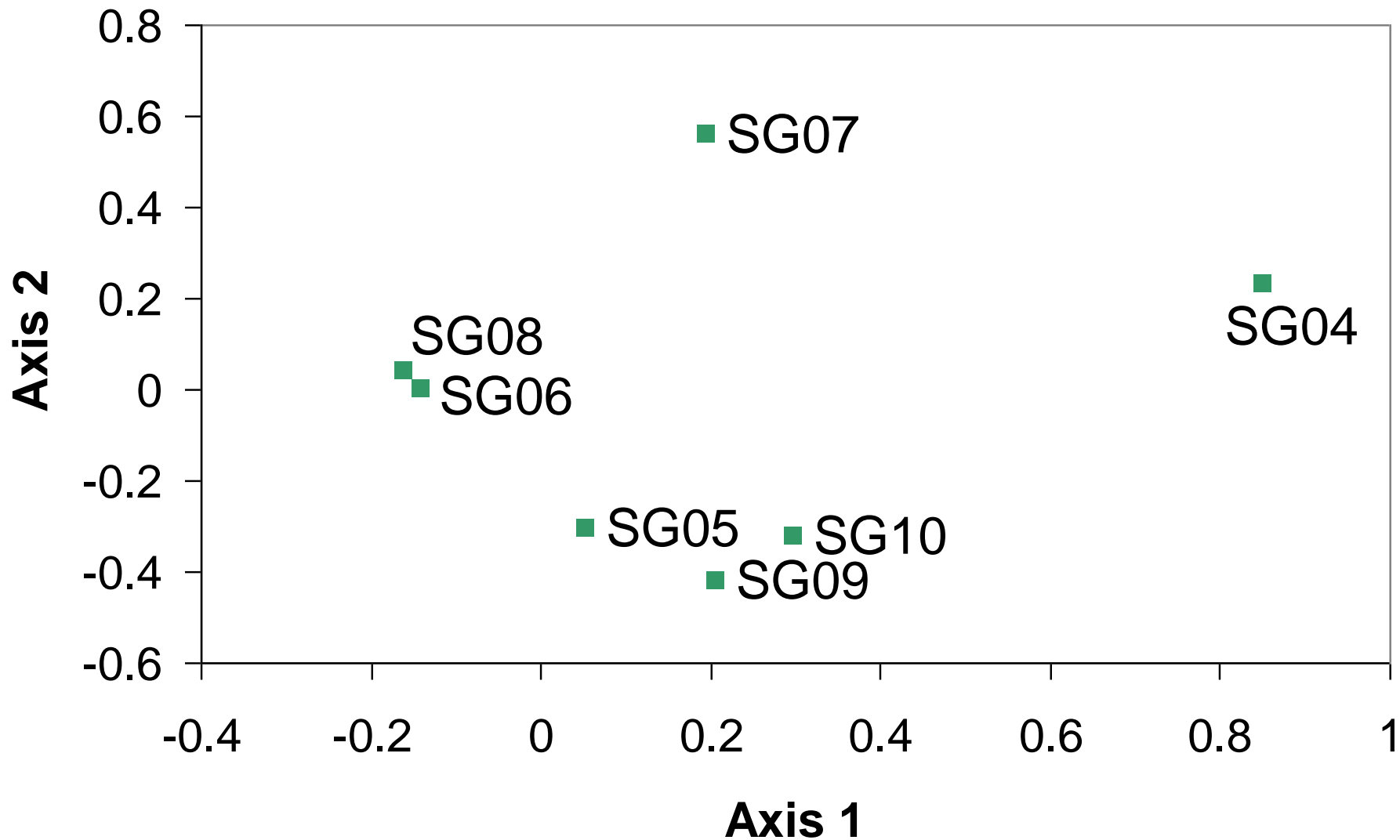
Glass Decoration TPQs



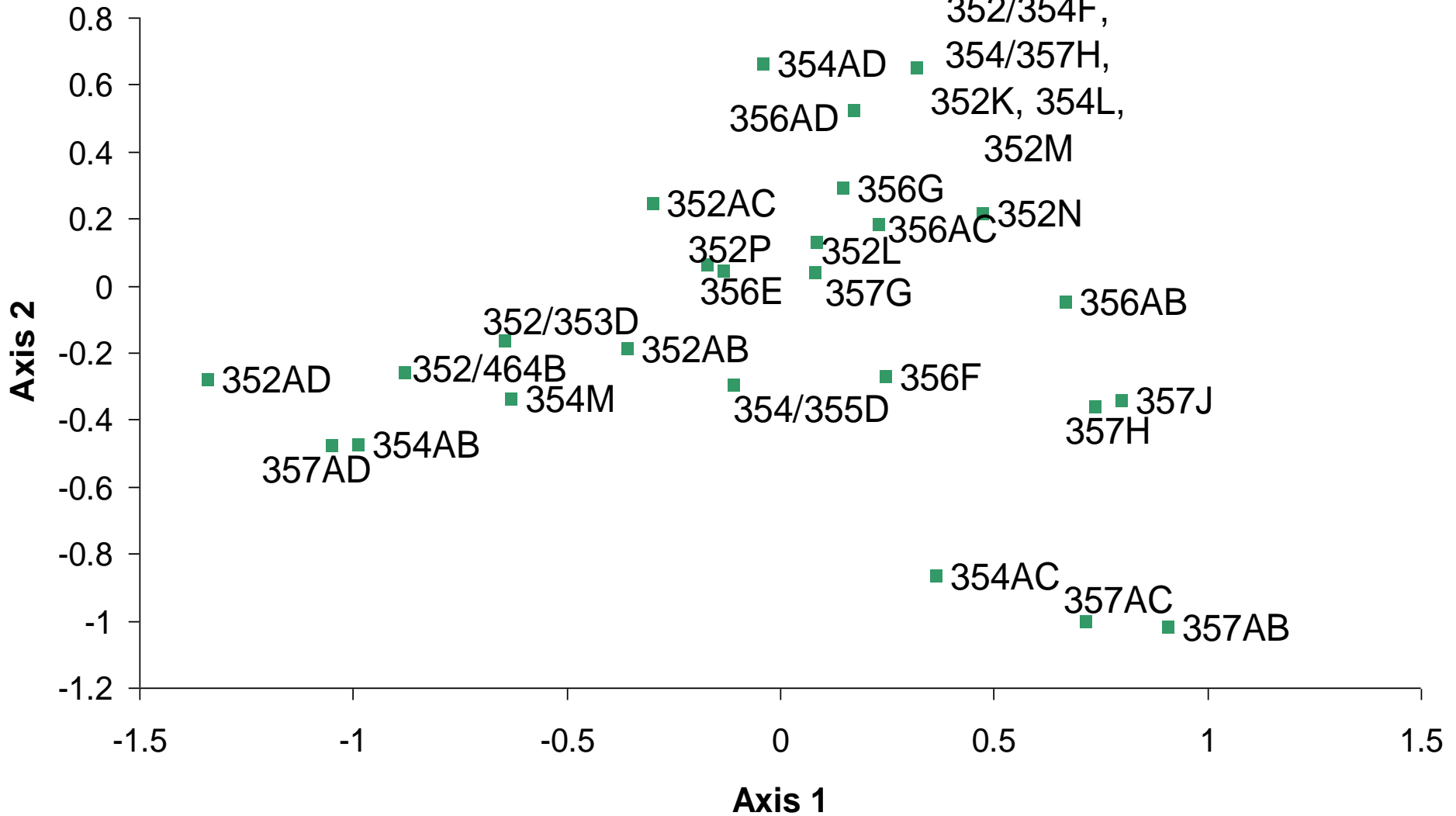
**Air Twist Stemware
1740 - 1770**

**Enamel Twist Stemware
1750 - 1780**

CA of Stratigraphic Groups



CA of Contexts





Evidence from the Kitchen



Carbonized peach pits, corn kernels,
sorghum seeds

Burned fragments of slipware
coarse earthenware



Cast Iron Vessel Lid Fragment



Molded brick fragments from Dry Well

*Water Table
Brick:
SG8*



*Brick Similar to South Pavilion
Chimney Bricks: SG9*



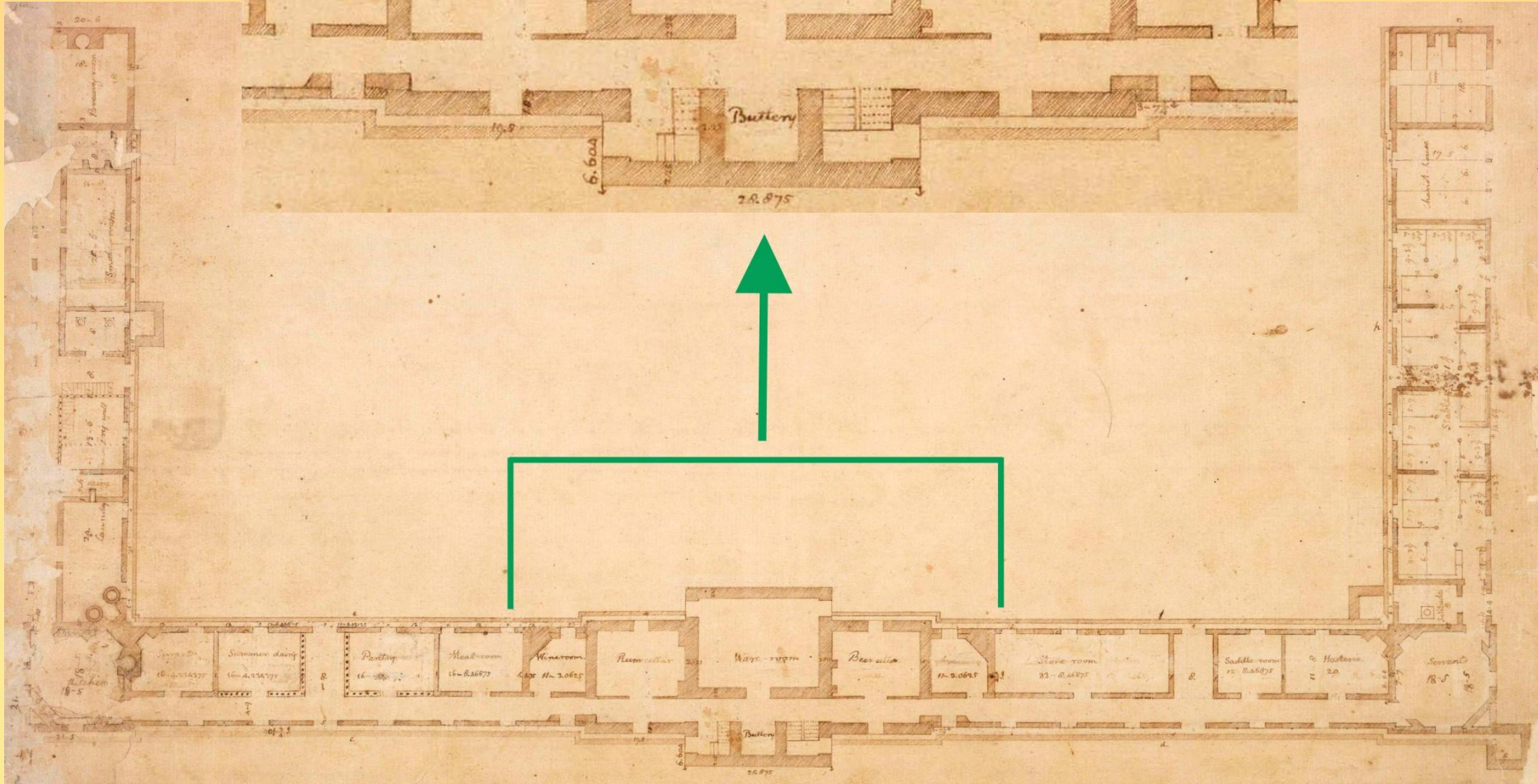
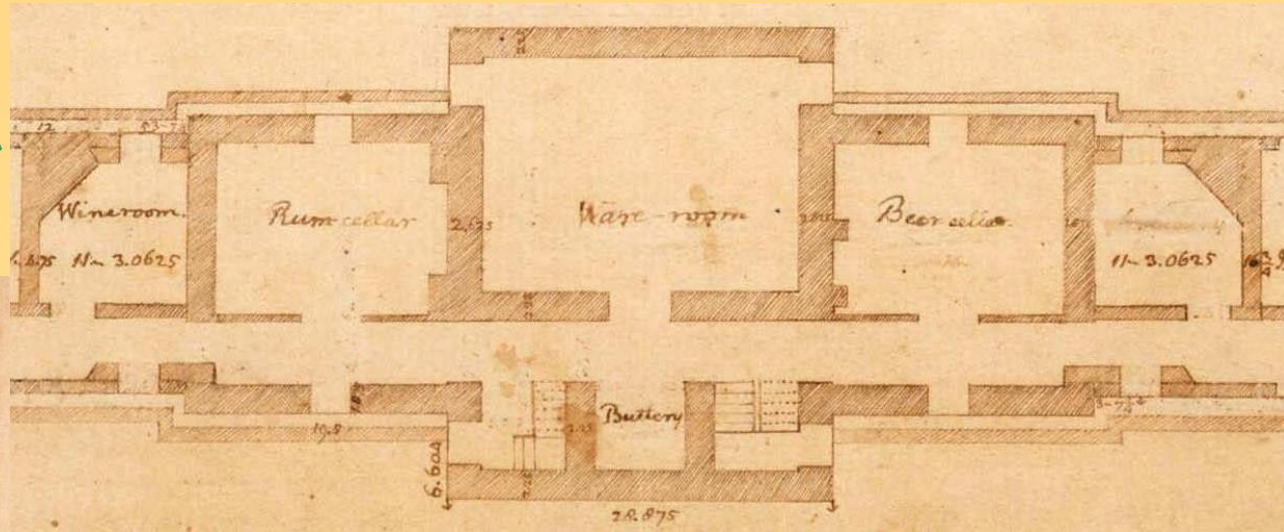
*Cornice
Stretcher
Brick:
SG10*



Plan for Cellars and Bows

South Bow

North Bow



To Recap...

- Construction: Winter of 1771-1772

To Recap...

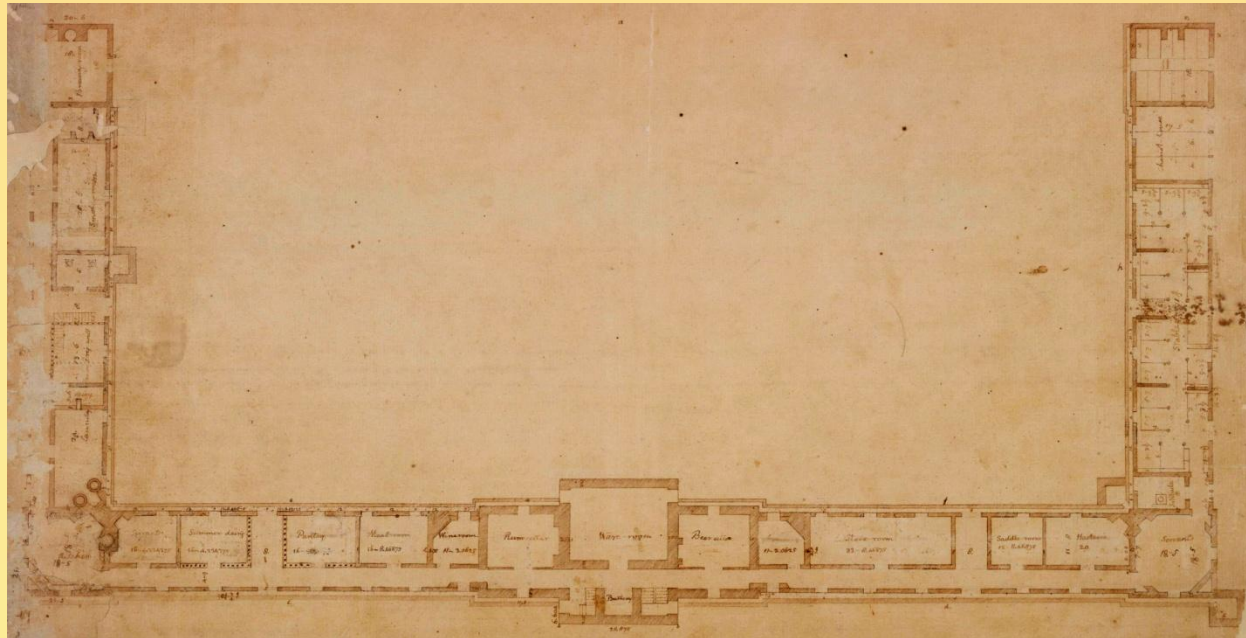
- Construction: Winter of 1771-1772
- Use: Cold Food Storage from approx. 1771-1783

To Recap...

- Construction: Winter of 1771-1772
- Use: Cold Food Storage from approx. 1771-1783
- Abandonment: Final Filling in approx. 1783

To Recap...

- Construction: Winter of 1771-1772
- Use: Cold Food Storage from approx. 1771-1783
- Abandonment: Final Filling in approx. 1783
- Fill: Secondary Deposits from House, Kitchen, and Construction Sources dating from 1768-1783





Special Thanks to:

Karen Smith, Fraser Neiman, Don Gaylord, Chris Mundy,
Derek Wheeler, and Jesse Sawyer

Funding for this Research Provided by
Robert H. Smith