

DAACS Stylistic Element Glossary

D-G

by Beatrix Arendt, Lynsey Bates, Leslie Cooper, Jillian Galle,
Elizabeth Sawyer, Jesse Sawyer, and Karen Smith

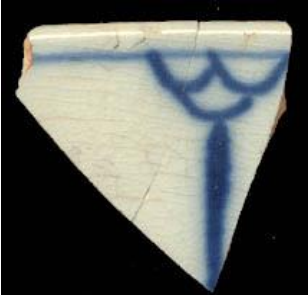

Last Updated June 2014

Dart Band 01	6
Dart Band 02	6
Dash Band 01	7
Dash Band 02	7
Dash Band 06	8
Dash Band 09	8
Dash Band, unid	8
Dendritic	8
Dentil Band 01	10
Dentil Band 02	10
Diamond Band 01	11
Diamond Band 02	11
Diamond Band 03	11
Diamond Band 04	12
Diamond Band 05	12
Diamond Band 07	13
Diamond Band 08	13
Diamond Band 09	13
Diaper/1 Dot	15
Diaper/4 Dot	15
Diaper/5 Dot	16
Diaper/Star	17
Diced Squares	18
Diced Square/Rectangle Band 01	19
Diced Square/Rectangle Band 02	19
Diced Square/Rectangle Band 03	20
Diced Square/Rectangle Band 04	20
Diced Square/Rectangle Band 05	21
Diced Square/Rectangle Band 06	21
Diced Square/Rectangle Band 07	22
Diced Square/Rectangle Band 08	22
Diced Square/Rectangle Band 09	22
Diced Square/Rectangle Band 10	24
Diced Square/Rectangle Band 11	24
Diced Square/Rectangle Band 12	25
Diced Square/Rectangle Band 13	26
Diced Square/Rectangle Band 14	26
Diced Square/Rectangle Band 15	27
Diced Square/Rectangle Band 16	27
Diced Square/Rectangle Band 17	28

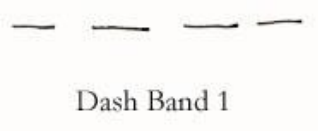
Dogtooth Band 01	28
Dogtooth Band 02	29
Dogtooth Band 03	29
Dogtooth Band 04	29
Dogtooth Band 05	31
Dogtooth Band 05	31
Dogtooth Band 06	31
Dogtooth Band 07	32
Dogtooth Band 08	32
Dogtooth Band 09	32
Dot Band 01	34
Dot Band 02	34
Dot Band 03	34
Dot Band 04	35
Dot Band 05	35
Dot Band 06	37
Dot Band, Unid.....	38
Dot Cluster Band 01.....	38
Dot Cluster Band 02.....	38
Dot Cluster Band 03.....	39
Dot Dash Band 01	39
Dot Cluster	39
Dot Plume Edge	40
Dots	41
Dotted/Terraced Rectangle	41
Facet/Panel.....	42
Fanning.....	43
Feather Edge	43
Fence.....	44
Fish.....	44
Fish Roe 01	45
Fish Roe Band 01.....	45
Fish Roe Band 02.....	46
Fish Roe Band 03.....	46
Fish Roe Band 04.....	46
Fish Roe Band 05.....	47
Fish Roe Band 07.....	47
Fish Roe Band 08.....	47
Fish Roe Band 09.....	49
Fish Roe Band 10.....	49

Fish Roe Band 10.....	49
Fish Roe Band 11.....	49
Fish Roe Band, unid.....	51
Fish Roe, unid.....	51
Flag/Banner.....	51
Floral Medallion.....	53
Floral, radiating bloom 01	53
Floral, radiating bloom 02	54
Fluted.....	54
Folded Rim	55
Fruit	55
Garland 01	56
Garland 03	56
Garland 04.....	57
Garland 05.....	57
Garland 06.....	59
Garland 07.....	59
Garland 08.....	60
Garland 09.....	60
Garland 10.....	61
Garland 11.....	61
Garland 12.....	62
Garland 13.....	62
Garland, unid.....	62
Geometric Band 01	64
Geometric Band 02	64
Geometric Band 12.....	65
Geometric Band 14.....	65
Geometric Band 15.....	66
Geometric Band 19.....	66
Geometric Band 20.....	66
Geometric Band 21.....	67
Geometric Band 22.....	67
Geometric Band 23.....	67
Geometric Band 25.....	68
Geometric Band 26.....	68
Geometric Band 27.....	69
Geometric Band 32.....	69
Geometric Circle.....	70
Geometric Column 01	70

Geometric, unid.	71
Granulated Band.....	71
Grass.....	72
Grasses and Leaves Molded Edge.....	72

Stylistic Element Name and Image	Characteristics	Cataloging Example for the Depicted Sherd								
<p data-bbox="218 131 411 164">Dart Band 01</p> 	<p data-bbox="619 102 1121 272">Two half circles are suspended from a single line with one additional half circle straddling the two, forming a small pyramid. A solid line extends vertically from the top of the pyramid.</p> <p data-bbox="619 350 1157 451">Stylistic Genre: The genre for this stylistic element depends on a combination of decorative technique, color, and element.</p>	<p data-bbox="1402 134 1839 167">Stylistic Genre: Handpainted Blue</p> <p data-bbox="1409 207 1833 240">Related Stylistic Element Data:</p> <table border="1" data-bbox="1182 277 2060 386"> <thead> <tr> <th data-bbox="1182 277 1402 310">DecTech</th> <th data-bbox="1402 277 1623 310">Color</th> <th data-bbox="1623 277 1843 310">Sty. Element</th> <th data-bbox="1843 277 2060 310">Motif</th> </tr> </thead> <tbody> <tr> <td data-bbox="1182 310 1402 386">Painted, under free hand</td> <td data-bbox="1402 310 1623 386">Purple-Blue, Intense Dark</td> <td data-bbox="1623 310 1843 386">Dart Band 01</td> <td data-bbox="1843 310 2060 386">Individual A</td> </tr> </tbody> </table>	DecTech	Color	Sty. Element	Motif	Painted, under free hand	Purple-Blue, Intense Dark	Dart Band 01	Individual A
DecTech	Color	Sty. Element	Motif							
Painted, under free hand	Purple-Blue, Intense Dark	Dart Band 01	Individual A							
<p data-bbox="218 578 411 610">Dart Band 02</p> 	<p data-bbox="619 545 1146 678">This element consists of connected v's of varying lengths suspended from a single line, creating an illusion of triangles. There is a dot centered inside one of the v's.</p> <p data-bbox="619 756 1157 857">Stylistic Genre: The genre for this stylistic element depends on a combination of decorative technique, color, and element.</p>	<p data-bbox="1402 578 1839 610">Stylistic Genre: Handpainted Blue</p> <p data-bbox="1409 651 1833 683">Related Stylistic Element Data:</p> <table border="1" data-bbox="1182 721 2060 829"> <thead> <tr> <th data-bbox="1182 721 1402 753">DecTech</th> <th data-bbox="1402 721 1623 753">Color</th> <th data-bbox="1623 721 1843 753">Sty. Element</th> <th data-bbox="1843 721 2060 753">Motif</th> </tr> </thead> <tbody> <tr> <td data-bbox="1182 753 1402 829">Painted, under free hand</td> <td data-bbox="1402 753 1623 829">Purple-Blue, Intense Dark</td> <td data-bbox="1623 753 1843 829">Dart Band 02</td> <td data-bbox="1843 753 2060 829">Individual A</td> </tr> </tbody> </table>	DecTech	Color	Sty. Element	Motif	Painted, under free hand	Purple-Blue, Intense Dark	Dart Band 02	Individual A
DecTech	Color	Sty. Element	Motif							
Painted, under free hand	Purple-Blue, Intense Dark	Dart Band 02	Individual A							

Dash Band 01



A single line of short, horizontal dash marks characterize this element. As with all bands, it is an element that encircles the entire vessel. This band may or may not be located between two solid bands.

Stylistic Genre: The genre for this stylistic element depends on a combination of decorative technique, color, and element.



Stylistic Genre: Overglaze, handpainted

Related Stylistic Element Data:

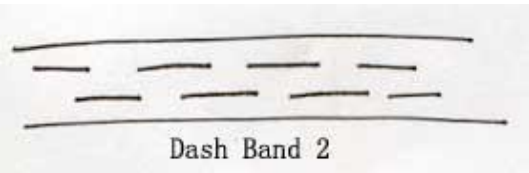
DecTech	Color	Sty. Element	Motif
Painted, over free hand	Unidentifiable	Dash Band 01	Individual A

Stylistic Genre: Handpainted Blue

Related Stylistic Element Data:

DecTech	Color	Sty. Element	Motif
Painted, under free hand	Purple-Blue, Intense Medium	Dash Band 01	Individual A

Dash Band 02



Characterized by two staggered parallel rows of dashed lines that are bound by two solid lines. Like Dash Band 1, this band is primarily seen on Chinese porcelains.

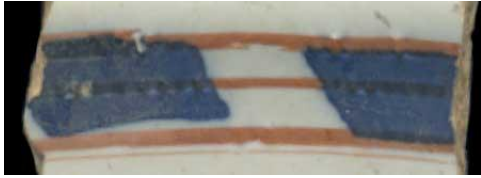
Stylistic Genre: The genre for this stylistic element depends on a combination of decorative technique, color, and element.

Stylistic Genre: Overglaze, handpainted

Related Stylistic Element Data:

DecTech	Color	Sty. Element	Motif
Painted, over free hand	Unidentifiable	Dash Band 02	Individual A

Dash Band 06



Dash Band 6 is characterized by wide, painted rectangles that are bisected by a thin, plain band. This is framed above and below with one or more plain bands.

Stylistic Genre: The genre for this stylistic element depends on a combination of decorative technique, color, and element.

Stylistic Genre: Polychrome, other

Related Stylistic Element Data:

DecTech	Color	Sty. Element	Motif
Painted, under free hand	Purple-Blue, Intense Dark	Dash Band 06	Individual A
Painted, under free hand	Yellow-Red, Intense Medium	Dash Band 06	Individual A

Dash Band 09



Inlaid slip forms rows and columns of zigzag shapes that are composed of three connected rectangles, paired with their mirror images.

Stylistic Genre: Slipware, factory made

Stylistic Genre: Slipware, factory made

Related Stylistic Element Data:

DecTech	Color	Sty. Element	Motif
Slip, inlaid	Yellow-Red, Muted Dark	Dash Band 09	Individual A

Dash Band, unid

Use this when there is a small portion of a dash band present, but the specific band cannot be identified.

Stylistic Genre: The genre for this stylistic element depends on a combination of decorative technique, color, and element.

Dendritic

A dark fern-like element that has the appearance of trees or bushes.

Stylistic Genre: Slipware, factory made

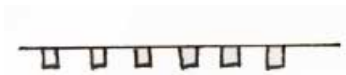
Stylistic Genre: Slipware, factory made

Related Stylistic Element Data:



DecTech	Color	Sty. Element	Motif
Dendritic	Neutrals, Dark	Dendritic	Individual A

Dentil Band 01



Dentil Band 1 consists of a straight line with small rectangular “dentils” that are suspended below the line. This motif is very similar to the architectural dentil motif. This band is not contained within two solid lines. This element is most often executed in overglaze on Chinese porcelains.

Stylistic Genre: The genre for this stylistic element depends on a combination of decorative technique, color, and element.

Stylistic Genre: Overglaze, handpainted

Related Stylistic Element Data:

DecTech	Color	Sty. Element	Motif
Painted, over free hand	Unidentifiable	Dentil Band 01	Individual A

Dentil Band 02



Dentil Band 02, like Dentil Band 01, consists of a straight line with small rectangular dentils that are suspended from the line; however, this band is contained within two solid lines. Small vertical lines or tick marks extend between the dentils from the solid line below.

Stylistic Genre: The genre for this stylistic element depends on a combination of decorative technique, color, and element.

Stylistic Genre: Handpainted Blue

Related Stylistic Element Data:

DecTech	Color	Sty. Element	Motif
Painted, under free hand	Purple-Blue, Intense Dark	Dentil Band 02	Stacked Combination A
Painted, under free hand	Purple-Blue, Intense Dark	Husk Chain Band 08	Stacked Combination A
Painted, under free hand	Purple-Blue, Muted Dark	Spearhead Band 09	Stacked Combination A

Diamond Band 01



This band consists of a single row of repeated, linked molded diamonds. All of the diamonds are hollow. This molded diamond string is bound on either side by raised, molded plain bands.

Stylistic Genre: Molded Edge Decoration, other

Stylistic Genre: Molded Edge Decoration, other

Related Stylistic Element Data:

DecTech	Color	Sty. Element	Motif
Molded	No Applied Color	Diamond Band 01	Individual A

Diamond Band 02



Like Diamond Band 1, this band consists of a single row of repeated, linked molded diamonds. However, the diamonds on this band alternate between solid diamonds and hollow diamonds. This molded diamond string is bound on either side by raised, molded plain bands.

Stylistic Genre: Molded Edge Decoration, other

Stylistic Genre: Molded Edge Decoration, other

Related Stylistic Element Data:

DecTech	Color	Sty. Element	Motif
Molded	No Applied Color	Diamond Band 02	Individual A

Diamond Band 03



The element of this band is a chain of solid diamonds with beads in the space above and between the diamonds. Solid triangles are in the space below the diamonds.

Stylistic Genre: Molded Edge Decoration, other

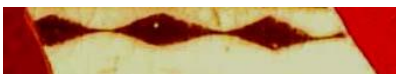
Stylistic Genre: Molded Edge Decoration, other

Related Stylistic Element Data:

DecTech	Color	Sty. Element	Motif
Molded	No Applied Color	Diamond Band 03	Individual A



Diamond Band 04



This band consists of solid diamonds, either painted or slipped, whose right and left ends are joined to other diamonds, creating a band around the vessel. Commonly found on factory-made slipwares.

Stylistic Genre: Slipware, factory made

Stylistic Genre: Slipware, factory made

Related Stylistic Element Data:

DecTech	Color	Sty. Element	Motif
Slip, lathe/engine turned	Neutrals, Dark	Diamond Band 04	Individual A

Diamond Band 05



This band consists of a solid diamond, slipped or painted, outlined by another diamond with a small amount of space in between. The outer outline joins adjacent diamonds to form a band. Most often found on factory-made slipwares.

Stylistic Genre: Slipware, factory made

Stylistic Genre: Slipware, factory made

Related Stylistic Element Data:

DecTech	Color	Sty. Element	Motif
Slip, lathe/engine turned	Neutrals, Dark	Diamond Band 05	Individual A

Diamond Band 07



A single band of unconnected diamonds. The example is executed with inlaid slip on factory made slipware.

Stylistic Genre: Slipware, factory made

Stylistic Genre: Slipware, factory made

Related Stylistic Element Data:

DecTech	Color	Sty. Element	Motif
Slip, inlaid	Yellow-Red, Muted Dark	Diamond Band 07	Individual A
Slip, inlaid	Yellow-Red, Muted Dark	Dash Band, unid	Individual B

Diamond Band 08



A single band of connected, open diamonds. Each diamond is circumscribed by an oval with a vertical line where ovals touch.

Stylistic Genre: Slipware, factory made

Stylistic Genre: Slipware, factory made

Related Stylistic Element Data:

DecTech	Color	Sty. Element	Motif
Rouletted	No Applied Color	Diamond Band 08	Individual A

Diamond Band 09



This band consists of stacked rows of diamond-shaped rouletted elements. The rows are staggered so that the elements line up continuously diagonally. In this example, inlaid slip fills the rouletted elements.

Stylistic Genre: Slipware, factory made

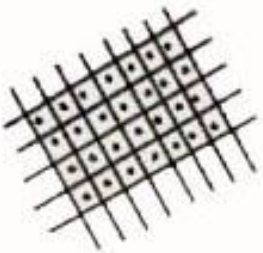
Stylistic Genre: Slipware, factory made

Related Stylistic Element Data:

DecTech	Color	Sty. Element	Motif
Rouletted	Not Applicable	Diamond Band 09	Individual A
Slip, Inlaid	Green-Yellow, Intense Medium	Diamond Band 09	Individual A

--	--	--

Diaper/1 Dot



This is a basic Dot/Diaper pattern with a single dot in the middle of each diaper, or crosshatch. This design can be executed with a range of decorative techniques, from Painted, under and Painted, over, to molding. There may be a lighter color shading behind the diaper/1 dot pattern.

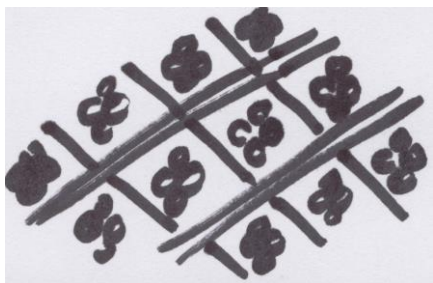
Stylistic Genre: The genre for this stylistic element depends on a combination of decorative technique, color, and element.

Stylistic Genre: Overglaze, handpainted

Related Stylistic Element Data:

DecTech	Color	Sty. Element	Motif
Painted, over free hand	Red, Intense Medium	Diaper/1 Dot	Individual A

Diaper/4 Dot



This decoration is a variation of the classic molded Dot/Diaper pattern. It has four raised dots in the center of a double banded diamond or crosshatch (the diaper).

Stylistic Genre:
Dot/Diaper/Basketweave

Stylistic Genre: Dot/Diaper/Basketweave

Related Stylistic Element Data:

DecTech	Color	Sty. Element	Motif
Molded	No Applied Color	Diaper/4 Dot	Individual A

Diaper/5 Dot



This decoration is the classic molded Dot/Diaper pattern. It has five raised dots in the center of a double banded diamond or crosshatch (the diaper).

Stylistic Genre:
Dot/Diaper/Basketweave

Stylistic Genre: Dot/Diaper/Basketweave

Related Stylistic Element Data:

DecTech	Color	Sty. Element	Motif
Molded	No Applied Color	Diaper/5 Dot	Individual A

Diaper/Star



The star lattice element is a molded element that consists of molded stars inside of the diamonds created by the molded lattice pattern. Seen here on Whieldon ware.

Stylistic Genre:
Dot/Diaper/Basketweave

Stylistic Genre: Dot/Diaper/Basketweave

Related Stylistic Element Data:

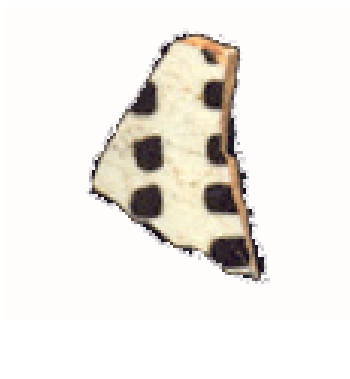
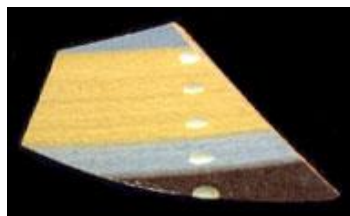
DecTech	Color	Sty. Element	Motif
Molded	No Applied Color	Diaper/Stars	Individual A

Stylistic Genre: Dot/Diaper/Basketweave

Related Stylistic Element Data:

DecTech	Color	Sty. Element	Motif
Molded	Not Applicable	Diaper/Star	Adjacent Combination A
Molded	Not Applicable	Plume, feather	Adjacent Combination A
Molded	Not Applicable	Basket Weave 01	Adjacent Combination A

Diced Squares



Diced squares are short incised lines that are stacked and evenly spaced. They can be executed on factory made slipware or on refined stonewares.

Stylistic Genre: The genre for this stylistic element depends on a combination of decorative technique, color, and element.

Stylistic Genre: Slipware, factory made

Related Stylistic Element Data:

DecTech	Color	Sty. Element	Motif
Incised, lathe/engine turned	No Applied Color	Diced Squares	Individual A
Slip, lathe/engine turned	Blue, Muted Light	Plain Band 12	Individual A
Slip, lathe/engine turned	Yellow, Intense Light	Plain Band 12	Individual A
Slip, lathe/engine turned	Yellow-Red, Muted Dark	Plain Band 12	Individual A

Stylistic Genre: Slipware, factory made

Related Stylistic Element Data:

DecTech	Color	Sty. Element	Motif
Slip, inlaid	Red/Yellow-Red, Muted Dark	Diced Squares	Individual A

Stylistic Genre: None

Related Stylistic Element Data:

DecTech	Color	Sty. Element	Motif
Incised, lathe/engine turned	No Applied Color	Diced Squares	Individual A

Diced Square/Rectangle Band 01



This is an inlaid slip band composed of squares cut into the vessel body and filled with a slip alternating with areas of "blank space", creating the illusion of alternating squares.

Stylistic Genre: Slipware, factory made

Stylistic Genre: Slipware, factory made

Related Stylistic Element Data:

DecTech	Color	Sty. Element	Motif
Slip, inlaid	Yellow-Red, Muted Dark	Diced Square/Rectangle Band 01	Individual A

Diced Square/Rectangle Band 02



A rouletted band consisting of three stacked rows of rectangles/squares. The sizes of squares may vary between rows.

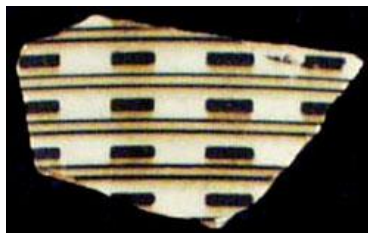
Stylistic Genre: The genre for this stylistic element depends on a combination of decorative technique, color, and element.

Stylistic Genre: Scratch Blue

Related Stylistic Element Data:

DecTech	Color	Sty. Element	Motif
Scratch/Fill	Purple-Blue, Intense Dark	Diced Square/Rectangle Band 02	Individual A

Diced Square/Rectangle Band 03



Inlaid slip forms bands of short, rectangles evenly spaced and separated by thin parallel lines.

Stylistic Genre: Slipware, factory made

Stylistic Genre: Slipware, factory made

Related Stylistic Element Data:

DecTech	Color	Sty. Element	Motif
Slip, inlaid	Yellow-Red, Muted Dark	Diced Square/Rectangle Band 03	Individual A

Diced Square/Rectangle Band 04



A band of evenly spaced “fat” rectangles stacked on a band of evenly spaced “thin” rectangles, separated by a line. Plain bands separate (and are considered part of) the elements of the band.

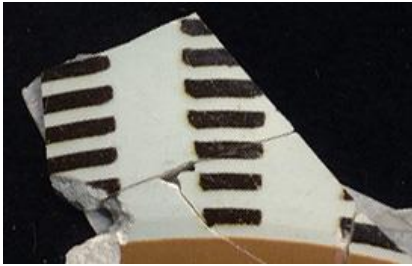
Stylistic Genre: Slipware, factory made

Stylistic Genre: Slipware, factory made

Related Stylistic Element Data:

DecTech	Color	Sty. Element	Motif
Slip, inlaid	Yellow-Red, Muted Dark	Diced Square/Rectangle Band 04	Individual A

Diced Square/Rectangle Band 05



Vertical stacks of dashes of the same size, at regular intervals.

Stylistic Genre: Slipware, factory made

Stylistic Genre: Slipware, factory made

Related Stylistic Element Data:

DecTech	Color	Sty. Element	Motif
Slip, inlaid	Yellow-Red, Muted Dark	Diced Square/Rectangle Band 05	Individual A

Diced Square/Rectangle Band 06



Inlaid slip forms rows composed of alternating long and short rectangles.

Stylistic Genre: Slipware, factory made

Stylistic Genre: Slipware, factory made

Related Stylistic Element Data:

DecTech	Color	Sty. Element	Motif
Slip, inlaid	Yellow-Red, Muted Dark	Diced Square/Rectangle Band 06	Individual A

Diced Square/Rectangle Band 07



Vertical columns of dashes occurring at regular intervals around the vessel. Dashes of the same thickness are broken up by a solid band encircling the vessel.

Stylistic Genre: Slipware, factory made

Stylistic Genre: Slipware, factory made

Related Stylistic Element Data:

DecTech	Color	Sty. Element	Motif
Slip, inlaid	Neutrals, Dark	Diced Square/Rectangle Band 07	Individual A

Diced Square/Rectangle Band 08



Stacks of thinly-incised dashes around the vessel, with one thicker dash occurring at regular intervals.

Stylistic Genre: Slipware, factory made

Stylistic Genre: Slipware, factory made

Related Stylistic Element Data:

DecTech	Color	Sty. Element	Motif
Slip, inlaid	Yellow-Red, Muted Dark	Diced Square/Rectangle Band 08	Individual A

Diced Square/Rectangle Band 09



Stacked rows of long, thin horizontal rectangles with tapered or beveled ends. The incised rectangles alternate, so as one ends, the second one begins, creating a slight overlap.

Stylistic Genre: Slipware, factory made

Stylistic Genre: Slipware, factory made

Related Stylistic Element Data:

DecTech	Color	Sty. Element	Motif
Slip, lathe/engine turned	Yellow-Red, Muted Dark	Diced Square/Rectangle Band 09	Individual A
Incised, lathe/engine turned	No Applied Color	Diced Square/Rectangle Band 09	Individual A

		Rouletted	Green, Muted Medium	Unidentified	Individual B

Diced Square/Rectangle Band 10



This band is composed of adjacent squares and rectangles forming an alternating-color pattern. This example contains both inlaid slip, “white space” on the vessel, as well as slipped squares/rectangles that are not incised.

Stylistic Genre: Slipware, factory made

Stylistic Genre: Slipware, factory made

Related Stylistic Element Data:

DecTech	Color	Sty. Element	Motif
Slip, lathe/engine turned	Neutrals, Dark	Diced Square/Rectangle Band 10	Individual A
Slip, inlaid	Yellow-Red, Intense Medium	Diced Square/Rectangle Band 10	Individual A
Incised, lathe/engine turned	Not Applicable	Diced Square/Rectangle Band 10	Individual A
Slip, lathe/engine turned	Blue, Muted Medium	Diced Square/Rectangle Band 10	Individual A

Diced Square/Rectangle Band 11



An inlaid slip band of alternating colored squares, some of which have a single dot in the middle, seen here alternating with “marbleized” squares.

Stylistic Genre: Slipware, factory made

Stylistic Genre: Slipware, factory made

Related Stylistic Element Data:

DecTech	Color	Sty. Element	Motif
Slip, inlaid	Yellow-Red, Muted Dark	Diced Square/Rectangle Band 11	Individual A
Slip, inlaid	Yellow-Red, Intense Medium	Diced Square/Rectangle Band 11	Individual A

Diced Square/Rectangle Band 12



The band consists of a single row of checkerboards (colored squares alternating with squares composed of "white space" of the vessel) alternating with a plain band.

Stylistic Genre: Slipware, factory made

Stylistic Genre: Slipware, factory made

Related Stylistic Element Data:

DecTech	Color	Sty. Element	Motif
Slip, lathe/engine turned	Purple-Blue, Muted Medium	Diced Square/Rectangle Band 12	Individual A
Incised, lathe/engine turned	No applied color	Diced Square/Rectangle Band 12	Individual A

Diced Square/Rectangle Band 13



This band has a row of squares/rectangles of the same color alternating with a row of squares/rectangles of a different color.

Stylistic Genre: Slipware, factory made

Stylistic Genre: Slipware, factory made

Related Stylistic Element Data:

DecTech	Color	Sty. Element	Motif
Slip, lathe/engine turned	Neutrals, Dark	Diced Square/Rectangle Band 13	Individual A
Slip, lathe/engine turned	Yellow-Red, Muted Medium	Diced Square/Rectangle Band 13	Individual A

Diced Square/Rectangle Band 14



Characterized by evenly spaced and evenly sized incised squares/rectangles.

Stylistic Genre: The genre for this stylistic element depends on a combination of decorative technique, color, and element.

Stylistic Genre: Slipware, factory made

Related Stylistic Element Data:

DecTech	Color	Sty. Element	Motif
Slip, inlaid	Neutrals, light	Diced Square/Rectangle Band 14	Individual A
Slip, lathe/engine-tuned	Yellow, muted light	Diced Square/Rectangle Band 14	Individual A

Diced Square/Rectangle Band 15



Vertical “stripes” of inlaid slip that are connected by upper and lower horizontal inlaid slip bands.

Stylistic Genre: Slipware, factory made

Stylistic Genre: Slipware, factory made

Related Stylistic Element Data:

DecTech	Color	Sty. Element	Motif
Slip, inlaid	Red/Yellow-Red, Muted Dark	Diced Square/Rectangle Band 15	Stacked Combination A
Slip, lathe/engine turned	Yellow-Red Intense Medium	Solid	Stacked Combination B

Diced Square/Rectangle Band 16



This band consists of two plain bands with diced elements connected to each and extending in the opposite direction, creating an alternating pattern of “hanging” diced elements.

Stylistic Genre: Slipware, factory made

Related Stylistic Element Data:

DecTech	Color	Sty. Element	Motif
Slip, lathe/engine turned	Neutrals, Dark	Diced Square/Rectangle Band 16	Individual A

Diced Square/Rectangle Band 17



This band consists of stacked rows of parallelogram shaped rouletted elements. The rows of elements are staggered so they line up roughly diagonally.

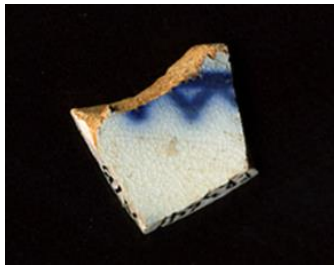
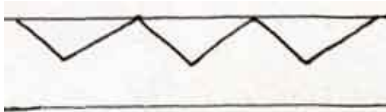
Stylistic Genre: The genre for this stylistic element depends on a combination of decorative technique, color, and element.

Stylistic Genre: Slipware, factory made

Related Stylistic Element Data:

DecTech	Color	Sty. Element	Motif
Rouletted	No Applied Color	Diced Square/Rectangle Band 17	Individual A

Dogtooth Band 01



Dogtooth Band 1 consists of a saw-tooth motif that extends downward from a single solid line. This band can also include a solid band below it.

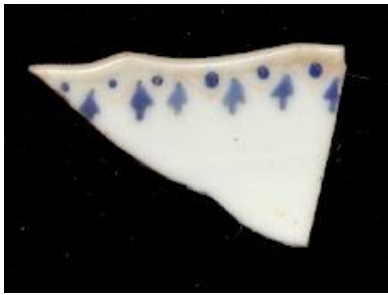
Stylistic Genre: The genre for this stylistic element depends on a combination of decorative technique, color, and element.

Stylistic Genre: Overglaze, handpainted

Related Stylistic Element Data:

DecTech	Color	Sty. Element	Motif
Painted, over free hand	Unidentifiable	Dogtooth Band 01	Individual A

Dogtooth Band 02



This band is similar to Dogtooth Band 1: *a saw-tooth motif that extends downward from a single solid line*. In addition, a dot is placed in the middle of each triangle. On the underside of the saw-tooth extends a small spearhead or arrow. There is NOT a second solid line enclosing the entire pattern. This is primarily seen on overglazed porcelain.

Stylistic Genre: The genre for this stylistic element depends on a combination of decorative technique, color, and element.

Stylistic Genre: Overglaze, handpainted

Related Stylistic Element Data:

DecTech	Color	Sty. Element	Motif
Painted, over free hand	Red, Muted Light	Dogtooth Band 02	Individual A
Painted, under free hand	Purple-Blue, Intense Dark	Dogtooth Band 02	Individual A

Dogtooth Band 03



Dogtooth Band 3 is characterized by a saw-tooth band that has dots in the lower, interior spaces of the triangle. This design may or may not have a lower plain band. It is often painted along a scalloped edge.

Stylistic Genre: The genre for this stylistic element depends on a combination of decorative technique, color, and element.

Stylistic Genre: Overglaze, handpainted

Related Stylistic Element Data:

DecTech	Color	Sty. Element	Motif
Painted, over free hand	Unidentifiable	Dogtooth Band 03	Individual A
Painted, under free hand	Purple-Blue, Intense Dark	Dogtooth Band 03	Individual A

Dogtooth Band 04



Dogtooth Band 04 is characterized by a saw-tooth band that has dots in the lower interior spaces of the triangle and in the upper interior spaces of the triangle. The band is bound by single bands on the top and bottom. The band is similar to Wavy Band 07, except the saw-tooth band forms sharp, nearly 90 degree angles, instead of undulating.

Stylistic Genre: The genre for this stylistic element depends on a combination of decorative technique, color, and element.

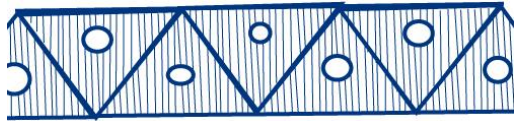
Stylistic Genre: Overglaze, handpainted

Related Stylistic Element Data:

DecTech	Color	Sty. Element	Motif
Painted, over free hand	Red, Muted Medium	Dogtooth Band 04	Individual A

--	--	--

Dogtooth Band 05



A band formed by interlocking triangles alternating in orientation. Each triangle has an open circle in the center of it. Closely spaced vertical diagonal lines form a background for the band.

Stylistic Genre: The genre for this stylistic element depends on a combination of decorative technique, color, and element.

Stylistic Genre: Handpainted Blue

Related Stylistic Element Data:

DecTech	Color	Sty. Element	Motif
Painted, under free hand	Purple-Blue, Muted Dark	Dogtooth Band 05	Individual A

Dogtooth Band 06



Example 1



Example 2

Dogtooth Band 06 consists of the simplest saw-tooth motif : a plain zigzag line with no additional bounding lines. The first example is incised on Colonoware. The second example is on factory-made slipware and is decorated with an inlaid slip.

Stylistic Genre: The genre for this stylistic element depends on a combination of decorative technique, color, and element.

Stylistic Genre: None (leave field blank)

Related Stylistic Element Data:

DecTech	Color	Sty. Element	Motif
Incised, free hand	No Applied Color	Dogtooth Band 06	Individual A

Stylistic Genre: Slipware, factory made

Related Stylistic Element Data:

DecTech	Color	Sty. Element	Motif
Slip, inlaid	Yellow-Red, Intense Medium	Plain Band 02	Stacked Combination A
Slip, inlaid	Yellow-Red, Intense Medium	Dogtooth Band 06	Stacked Combination A

Dogtooth Band 07



Dogtooth Band 07 is a chain of large “teeth” or solid triangles linked at their base. A thin line outlines each triangle. Single or double bands enclose the triangles.

Stylistic Genre: The genre for this stylistic element depends on a combination of decorative technique, color, and element.

Stylistic Genre: None (leave field blank)

Related Stylistic Element Data:

DecTech	Color	Sty. Element	Motif
Painted, under free hand	Yellow-Red, Intense Medium	Dogtooth Band 07	Individual A

Dogtooth Band 08



Two zigzag bands placed over top of each other and offset.

Stylistic Genre: Slipware, factory made.

Stylistic Genre: Slipware, factory made

Related Stylistic Element Data:

DecTech	Color	Sty. Element	Motif
Slip, inlaid	Neutrals, Dark	Dash Band 11	Stacked Combination A
Slip, inlaid	Neutrals, Dark	Dogtooth Band 08	Stacked Combination A

Dogtooth Band 09



This band consists of two dogtooth bands, reflected vertically on top of each other.

Stylistic Genre: Slipware, factory made

Stylistic Genre: Slipware, factory made

Related Stylistic Element Data:

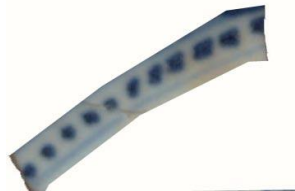
DecTech	Color	Sty. Element	Motif
Slip, inlaid	Yellow-Red/Red, Muted Dark	Dogtooth Band 09	Individual A

Dogtooth Band, unid

Use this when there is a small portion of a dogtooth band present, but the specific band cannot be identified.

Stylistic Genre: *The genre for this stylistic element depends on a combination of decorative technique, color, and element.*

Dot Band 01



Dot Band 1 is characterized by a single band of dots that encircle a vessel. This band may or may not have two thin solid bands on either side.

Stylistic Genre: The genre for this stylistic element depends on a combination of decorative technique, color, and element.

Stylistic Genre: Handpainted Blue

Related Stylistic Element Data:

DecTech	Color	Sty. Element	Motif
Painted, under free hand	Purple-Blue, Intense Dark	Dot Band 01	Individual A

Dot Band 02



Dot Band 2 is a series of connected squares. In the center of each square is a single dot. Think of cells in a plant! Note that each cell is rectangular or square, not round, which is what distinguishes this band from a Fish Roe Band.

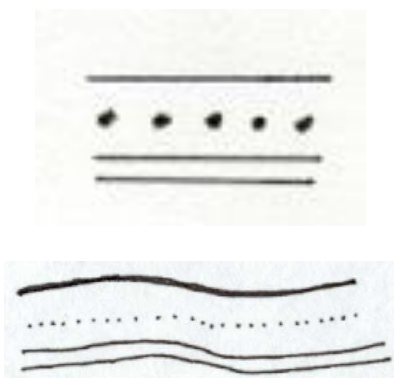
Stylistic Genre: The genre for this stylistic element depends on a combination of decorative technique, color, and element.

Stylistic Genre: Handpainted Blue

Related Stylistic Element Data:

DecTech	Color	Sty. Element	Motif
Painted, under free hand	Purple-Blue, Intense Dark	Dot Band 02	Individual A
Painted, under free hand	Purple-Blue, Muted Medium	Dot Band 02	Individual A

Dot Band 03



Dot Band 3 consists of a single line of dots bordered by a single band on the top and a double band on the bottom. The band can be wavy or straight. Often seen in overglaze Chinese porcelain.

Stylistic Genre: The genre for this stylistic element depends on a combination of decorative technique, color, and element.

Stylistic Genre: Overglaze, handpainted

Related Stylistic Element Data:

DecTech	Color	Sty. Element	Motif
Painted, over free hand	Unidentifiable	Dot Band 03	Individual A

Dot Band 04



This band consists of several small dots and one larger dot that are repeated and compressed between two plain bands.

Stylistic Genre: The genre for this stylistic element depends on a combination of decorative technique, color, and element.

Stylistic Genre: Polychrome, warm

Related Stylistic Element Data:

DecTech	Color	Sty. Element	Motif
Painted, under free hand	Yellow, Muted Dark	Dot Band 04	Individual A

Dot Band 05



This band consists of a single line of impressed dots or finer-shaped depressions. This has been seen just below the rim on Colonoware.

Stylistic Genre: The genre for this stylistic element depends on a combination of decorative technique, color, and element.

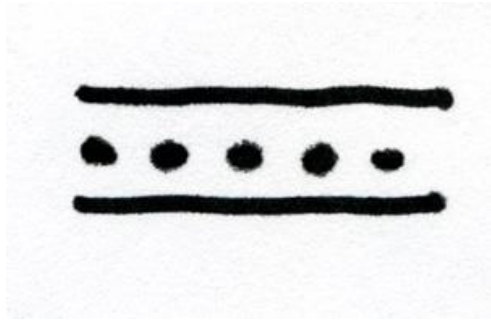
Stylistic Genre: None (leave field blank)

Related Stylistic Element Data:

DecTech	Color	Sty. Element	Motif
Impressed	No Applied Color	Dot Band 05	Individual A

--	--	--

Dot Band 06



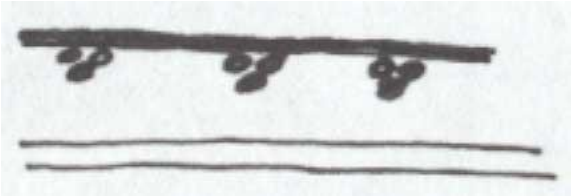
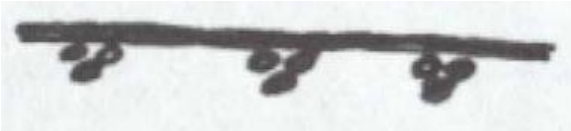
This band consists of a single line of dots bordered by two thick single bands.

Stylistic Genre: The genre for this stylistic element depends on a combination of decorative technique, color, and element.

Stylistic Genre: Overglaze, handpainted

Related Stylistic Element Data:

DecTech	Color	Sty. Element	Motif
Painted, over free hand	Unidentified	Dot Band 06	Individual A

<p>Dot Band, Unid</p>	<p>Use this when there is a small portion of a dot band present, but the specific band cannot be identified.</p> <p>Stylistic Genre: The genre for this stylistic element depends on a combination of decorative technique, color, and element.</p>												
<p>Dot Cluster Band 01</p> 	<p>This band is bound by a single band at the top with repeating three-dot clusters attached to it, and a double band at the bottom.</p> <p>Stylistic Genre: The genre for this stylistic element depends on a combination of decorative technique, color, and element.</p>	<p>Stylistic Genre: Overglaze, handpainted</p> <p>Related Stylistic Element Data:</p> <table border="1" data-bbox="1182 557 2060 667"> <thead> <tr> <th>DecTech</th> <th>Color</th> <th>Sty. Element</th> <th>Motif</th> </tr> </thead> <tbody> <tr> <td>Painted, over free hand</td> <td>Unidentified</td> <td>Dot Cluster Band 01</td> <td>Individual A</td> </tr> </tbody> </table>				DecTech	Color	Sty. Element	Motif	Painted, over free hand	Unidentified	Dot Cluster Band 01	Individual A
DecTech	Color	Sty. Element	Motif										
Painted, over free hand	Unidentified	Dot Cluster Band 01	Individual A										
<p>Dot Cluster Band 02</p> 	<p>This band is similar to Dot Cluster Band 01. It is bound by a single band at the top with repeating three-dot clusters attached to it. Unlike Dot Cluster Band 01, there is no band below.</p> <p>Stylistic Genre: The genre for this stylistic element depends on a combination of decorative technique, color, and element.</p>	<p>Stylistic Genre: Overglaze, handpainted</p> <p>Related Stylistic Element Data:</p> <table border="1" data-bbox="1182 951 2060 1062"> <thead> <tr> <th>DecTech</th> <th>Color</th> <th>Sty. Element</th> <th>Motif</th> </tr> </thead> <tbody> <tr> <td>Painted, over free hand</td> <td>Unidentified</td> <td>Dot Cluster Band 02</td> <td>Individual A</td> </tr> </tbody> </table>				DecTech	Color	Sty. Element	Motif	Painted, over free hand	Unidentified	Dot Cluster Band 02	Individual A
DecTech	Color	Sty. Element	Motif										
Painted, over free hand	Unidentified	Dot Cluster Band 02	Individual A										

Dot Cluster Band 03



This band consists of clusters of dots below a single solid line, enclosed by connected scallops.

Stylistic Genre: The genre for this stylistic element depends on a combination of decorative technique, color, and element.

Stylistic Genre: Overglaze, handpainted

Related Stylistic Element Data:

DecTech	Color	Sty. Element	Motif
Painted, over free hand	Unidentified	Dot Cluster Band 03	Individual A
Painted, over free hand	Neutrals, Dark	Dot Cluster Band 03	Individual A

Dot Dash Band 01



Dot Dash Band 01 is defined by a dot-dash pattern that is bound on either side by thin solid bands. This example also had a large band of background color onto which the dot-dashes and thin solid bands are painted.

Stylistic Genre: The genre for this stylistic element depends on a combination of decorative technique, color, and element

Stylistic Genre: Polychrome, warm

Related Stylistic Element Data:

DecTech	Color	Sty. Element	Motif
Painted, under free hand	Yellow-Red, Muted Medium	Dot Dash Band 01	Individual A
Painted, under free hand	Yellow, Intense Light	Dot Dash Band 01	Individual A

Dot Cluster



Dot clusters are characterized by small dots that are grouped together. They are seen on both porcelains and earthenwares. Any abstract grouping of dots, not related to botanical elements, should be classified as a “Dot Cluster.” When the dot cluster is repeated, make sure the Motif is “Individual A, repeated.”

Stylistic Genre: The genre for this stylistic element depends on a combination of decorative technique, color, and element.

Stylistic Genre: Handpainted Blue

Related Stylistic Element Data:

DecTech	Color	Sty. Element	Motif
Painted, under free hand	Purple-Blue, Intense Dark	Dot Cluster	Individual A

Dot Plume Edge



This element consists of a scalloped rim with a band of raised dots along the rim and a band of plumage directly beneath. All the three portions are painted to varying degrees. *NOTE: like certain shell-edge patterns, the scalloped rim is not recorded but assumed to be inherent in the stylistic element.

Stylistic Genre: Molded Edge Decoration, other

Stylistic Genre: Molded Edge Decoration, other

Related Stylistic Element Data:

DecTech	Color	Sty. Element	Motif
Painted, under free hand	Purple-Blue, Intense Dark	Dot Plume Edge	Individual A
Molded	Not Applicable	Dot Plume Edge	Individual A

Dots



Use Dots to describe any randomly placed dots on a vessel. This may include one or several.

Stylistic Genre: The genre for this stylistic element depends on a combination of decorative technique, color, and element.

Stylistic Genre: None (leave field blank)

Related Stylistic Element Data:

DecTech	Color	Sty. Element	Motif
Slip	Yellow, Intense Light	Solid	Individual A
Slip	Yellow-Red, Muted Dark	Dots	Individual A

Dotted/Terraced Rectangle



A repeated pattern of stepped rectangles with dots in the widest portion of the rectangle characterizes this element. Note: This element can also be seen without dots in the rectangles, as seen in the second image.

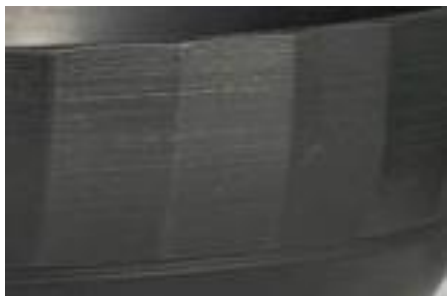
Stylistic Genre: Slipware, factory made

Stylistic Genre: Slipware, factory made

Related Stylistic Element Data:

DecTech	Color	Sty. Element	Motif
Slip, inlaid	Neutrals, Dark	Dotted/Terraced Rectangle	Individual A

Facet/Panel



Composed of many sides. These can be either flat sides or can be slightly rounded.

Stylistic Genre: None. Leave field blank.

Stylistic Genre: None

Related Stylistic Element Data:

DecTech	Color	Sty. Element	Motif
Incised, lathe/engine turned	No Applied Color	Facet/Panel	Individual A

DecTech	Color	Sty. Element	Motif
Molded	No Applied Color	Facet/Panel	Individual A

Fanning



A multi-color circle or oval shape where the colors appear to slide off the side towards the base of the vessel.

Stylistic Genre: Slipware, factory made

Stylistic Genre: Slipware, factory made

Related Stylistic Element Data:

DecTech	Color	Sty. Element	Motif
Slip	Yellow-Red, Muted Dark	Fanning	Individual A
Slip	Neutrals, Dark	Fanning	Individual A

Feather Edge



Molded scalloped rim with multiple raised arcs that hang from the rim and curve onto the marley.

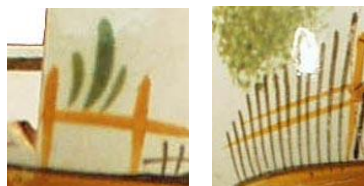
Stylistic Genre: Feather Edge

Stylistic Genre: Feather Edge

Related Stylistic Element Data:

DecTech	Color	Sty. Element	Motif
Molded	No Applied Color	Feather Edge	Individual A

Fence



As the images demonstrate, a fence can take multiple forms. You may see an intricate Trellis fence (top) or a simple H-shaped fence. Repeated vertical lines with a single or double horizontal line crossing through the lines are also considered a fence.

Stylistic Genre: The genre for this stylistic element depends on a combination of decorative technique, color, and element.

Stylistic Genre: Handpainted Blue

Related Stylistic Element Data:

DecTech	Color	Sty. Element	Motif
Painted, under free hand	Purple-Blue, Intense Dark	Fence	Scene Combination A

Stylistic Genre: Polychrome, warm

Related Stylistic Element Data:

DecTech	Color	Sty. Element	Motif
Painted, under free hand	Yellow-Red, Intense Medium	Fence	Scene Combination A
Painted, under free hand	Green-Yellow, Intense Medium	Botanical, unidentified	Scene Combination A

Fish



Any decorative technique made to look like a fish! Can be painted or molded.

Stylistic Genre: The genre for this stylistic element depends on a combination of decorative technique, color, and element.

Stylistic Genre: Handpainted Blue

Related Stylistic Element Data:

DecTech	Color	Sty. Element	Motif
Painted, under free hand	Purple-Blue, Intense Medium	Fish	Individual A
Painted, under free hand	Purple-Blue, Intense Dark	Fish	Individual A

Fish Roe 01



Fish Roe 01 is characterized by overlapping and tiered painted scallops that give the appearance of fish scales. A single dot is painted inside of each scallop. Unlike Fish Roe Band 01, it is not contained by single bands on either side. This element generally covers the entire vessel.

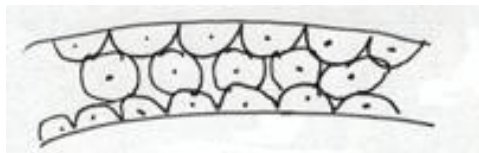
Stylistic Genre: The genre for this stylistic element depends on a combination of decorative technique, color, and element.

Stylistic Genre: Handpainted Blue

Related Stylistic Element Data:

DecTech	Color	Sty. Element	Motif
Painted under, free hand	Purple-Blue-Intense Dark	Fish Roe 01	Individual A

Fish Roe Band 01



Bound by two solid lines, this band has half fish roes extending from the upper and lower solid lines. Painted between these half fish roe is a row of complete, circular fish roe. This is most often seen on overglaze Chinese porcelain.

Stylistic Genre: The genre for this stylistic element depends on a combination of decorative technique, color, and element.

Stylistic Genre: Overglaze, handpainted

Related Stylistic Element Data:

DecTech	Color	Sty. Element	Motif
Painted, over free hand	Gilt	Fish Roe Band 01	Individual A
Painted, over free hand	Red, Intense Dark	Fish Roe Band 01	Individual A

Fish Roe Band 02



A single row of fish roe characterizes this band. It consists of a single row of circles with a single dot in the center.

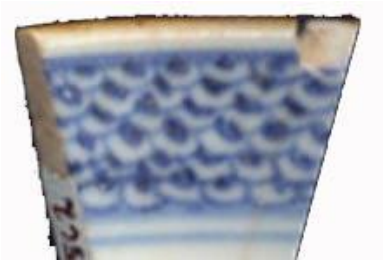
Stylistic Genre: The genre for this stylistic element depends on a combination of decorative technique, color, and element.

Stylistic Genre: Handpainted Blue

Related Stylistic Element Data:

DecTech	Color	Sty. Element	Motif
Painted, under free hand	Purple-Blue, Intense Dark	Fish Roe Band 02	Stacked Combination A

Fish Roe Band 03



Multiple, overlapping fish roe with a solid dot in the center. They have the appearance of fish scales.

Stylistic Genre: The genre for this stylistic element depends on a combination of decorative technique, color, and element.

Stylistic Genre: Handpainted Blue

Related Stylistic Element Data:

DecTech	Color	Sty. Element	Motif
Painted, under free hand	Purple-Blue, Intense Dark	Fish Roe Band 03	Individual A
Painted, under free hand	Purple-Blue, Intense Medium	Fish Roe Band 03	Individual A

Fish Roe Band 04



Fish Roe Band 4 is a single band of half-circular fish roe. Extending perpendicular from the base of each fish roe is a thin, vertical line.

Stylistic Genre: The genre for this stylistic element depends on a combination of decorative technique, color, and element.

Stylistic Genre: Handpainted Blue

Related Stylistic Element Data:

DecTech	Color	Sty. Element	Motif
Painted, under free hand	Purple-Blue, Intense Dark	Fish Roe Band 04	Individual A

Fish Roe Band 05



Fish Roe Band 05 has double rows of circular fish roe oriented upwards. The dot within the fish roe is amorphous, and is not obvious within all the circles (Note: This band is pictured here with Wavy Band 14).

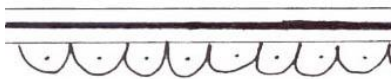
Stylistic Genre: The genre for this stylistic element depends on a combination of decorative technique, color, and element.

Stylistic Genre: Overglaze, handpainted

Related Stylistic Element Data:

DecTech	Color	Sty. Element	Motif
Painted, over free hand	Red, Intense Medium	Fish Roe Band 05	Individual A

Fish Roe Band 07



Connected “fish roe” (with a single dot painted inside each) suspended from a thin-thick-thin painted band.

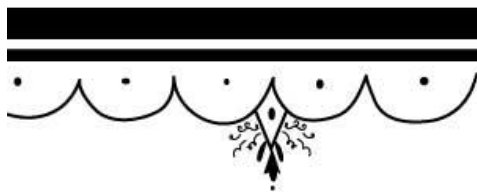
Stylistic Genre: The genre for this stylistic element depends on a combination of decorative technique, color, and element.

Stylistic Genre: Overglaze, handpainted

Related Stylistic Element Data:

DecTech	Color	Sty. Element	Motif
Painted, over free hand	Unidentifiable	Fish Roe Band 07	Individual A

Fish Roe Band 08



Connected “fish roe” (with a single dot painted inside each) suspended from a painted band. A hanging botanical element is attached to a diamond between two of the fish roe (and presumably at intervals along the fish roe band).

Stylistic Genre: The genre for this stylistic element depends on a combination of decorative technique,

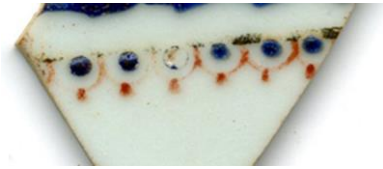
Stylistic Genre: Overglaze, handpainted

Related Stylistic Element Data:

DecTech	Color	Sty. Element	Motif
Painted, under free hand	Unidentifiable	Fish Roe Band 08	Individual A

	color, and element.	
--	---------------------	--

Fish Roe Band 09



Characterized by a continuous band of connected fish roe (half-circles with dots) painted beneath a plain band. A single dot is connected to the middle of each fish roe, and hangs below it.

Stylistic Genre: The genre for this stylistic element depends on a combination of decorative technique, color, and element.

Stylistic Genre: Polychrome, warm

Related Stylistic Element Data:

DecTech	Color	Sty. Element	Motif
Painted, under free hand	Yellow, Muted Dark	Fish Roe Band 09	Individual A
Painted, under free hand	Purple-Blue, Muted Medium	Fish Roe Band 09	Individual A
Painted, over free hand	Red, Intense Medium	Fish Roe Band 09	Individual A

Fish Roe Band 10



Characterized by a continuous band of connected fish roe (half-circles with dots) painted beneath a plain band. A single vertical line is painted between each fish-roe.

Stylistic Genre: The genre for this stylistic element depends on a combination of decorative technique, color, and element.

Stylistic Genre: Handpainted Blue

Related Stylistic Element Data:

DecTech	Color	Sty. Element	Motif
Painted under, free hand	Purple-Blue, Intense Dark	Fish Roe Band 10	Individual A

Fish Roe Band 11



Characterized by a single row of fish roe suspended from a plain band. Extending from the row of fish roe are long and narrow triangles, which reach, but do not necessarily touch, a double band. Finally, overlapping half-circles or arcs suspended from the bottom of the line (Half-Circle Band 3).

Stylistic Genre: The genre for this stylistic element depends on a

Stylistic Genre: Handpainted Blue

Related Stylistic Element Data:

DecTech	Color	Sty. Element	Motif
Painted, under free hand	Purple-Blue, Intense Dark	Fish Roe Band 11	Individual A

	combination of decorative technique, color, and element.	
--	---	--

Fish Roe Band, unid.

Use this term when you have a band of fish roe (circle with a central dot) but cannot identify the exact fish roe band.

Stylistic Genre: The genre for this stylistic element depends on a combination of decorative technique, color, and element.

Fish Roe, unid.



Use this term when you have one or more fish roe but you cannot identify the element they form. They may be in a small group or seen individually.

Stylistic Genre: The genre for this stylistic element depends on a combination of decorative technique, color, and element.

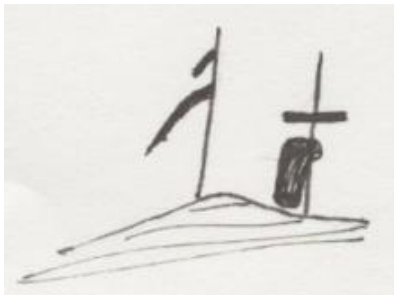


Stylistic Genre: Handpainted Blue

Related Stylistic Element Data:

DecTech	Color	Sty. Element	Motif
Painted, under free hand	Purple-Blue, Intense Dark	Fish Roe, unid.	Individual A

Flag/Banner



This term should be used when you have some sort of pennant, in this case two are found on a landscape feature.

Stylistic Genre: The genre for this stylistic element depends on a combination of decorative technique, color, and element.

Stylistic Genre: Overglaze, handpainted

Related Stylistic Element Data:

DecTech	Color	Sty. Element	Motif
Painted, over free hand	Unidentified	Flag/Banner	Individual A

--	--	--

Floral Medallion



One might think of Floral Medallions as a single flower viewed from above—a plan view of a flower without stems. Floral Medallions are most often painted on the interior bottom of a teabowl, bowl, or saucer.

Stylistic Genre: The genre for this stylistic element depends on a combination of decorative technique, color, and element.

Stylistic Genre: Handpainted Blue

Related Stylistic Element Data:

DecTech	Color	Sty. Element	Motif
Painted, under free hand	Purple-Blue, Intense Dark	Floral Medallion	Individual A

Floral, radiating bloom 01



Half of a flower suspended from a band. A radiating bloom may take many forms. It may be drawn on a plain background (see top) with detailed petals and leaves, or it may be drawn with a shaded fish scale or lotus flower petal background but with simple, unshaded petals.

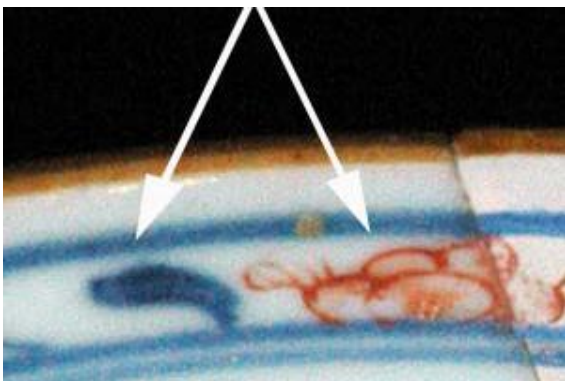
Stylistic Genre: The genre for this stylistic element depends on a combination of decorative technique, color, and element.

Stylistic Genre: Handpainted Blue

Related Stylistic Element Data:

DecTech	Color	Sty. Element	Motif
Painted, under free hand	Purple-Blue, Intense Dark	Floral, radiating bloom 01	Stacked Combination A

Floral, radiating bloom 02



Half of a flower blooming from or growing out of a band. A radiating bloom may take many forms. It may be drawn on a plain background with detailed petals and leaves as shown, or it may be drawn with a flower petal background with simple, unshaded petals.

Stylistic Genre: The genre for this stylistic element depends on a combination of decorative technique, color, and element.

Stylistic Genre: Overglaze, handpainted

Related Stylistic Element Data:

DecTech	Color	Sty. Element	Motif
Painted, under free hand	Purple-Blue, Intense Dark	Floral, radiating bloom 02	Adjacent Combination A
Painted, over free hand	Red, Intense Medium	Floral, radiating bloom 02	Adjacent Combination A

Fluted



A fluted stylistic element is a molded part of the vessel that has channels or depressions. Fluting is best thought of as long channels or depressions as opposed to ribbing, which is defined as long raised ridges or bumps.

Stylistic Genre: None (leave field blank)

Stylistic Genre: None (leave field blank)

Related Stylistic Element Data:

DecTech	Color	Sty. Element	Motif
Molded	No Applied Color	Fluted	Individual A

Folded Rim



Seen primarily on Native American sherds. A thickened rim created by added/applied clay.

Stylistic Genre: None (leave field blank)

Stylistic Genre: None (leave field blank)

Related Stylistic Element Data:

DecTech	Color	Sty. Element	Motif
Applied Clay	No Applied Color	Folded Rim	Individual A

Fruit



Use this term to describe any stylistic element that represents fruit. Some examples of fruit to the left a pineapple and a peach-like fruit.

Stylistic Genre: The genre for this stylistic element depends on a combination of decorative technique, color, and element.

Stylistic Genre: Polychrome, warm

Related Stylistic Element Data:

DecTech	Color	Sty. Element	Motif
Painted, under free hand	Yellow-Red, Muted Dark	Fruit	Individual A
Painted, under free hand	Yellow-Red, Intense Medium	Fruit	Individual A

Garland 01



Garland 1 is a delicate botanical garland that undulates around a thin band, which encircles the vessel. Two thickly painted leaves radiate from the undulating garland and are interspersed with feathery leaves.

Stylistic Genre: The genre for this stylistic element depends on a combination of decorative technique, color, and element.

Stylistic Genre: Polychrome, warm

Related Stylistic Element Data:

DecTech	Color	Sty. Element	Motif
Painted, under free hand	Green-Yellow, Muted Medium	Garland 01	Individual A
Painted, under free hand	Yellow, Intense Light	Garland 01	Individual A
Painted, under free hand	Yellow, Muted Dark	Garland 01	Individual A
Painted, under free hand	Yellow, Muted Medium	Garland 01	Individual A

Garland 03



Multiple thin lines coming off of an undulating botanical garland gives Garland 3 a fern-like quality. Simultaneously, a strand of connected color beads runs through the undulating band.

Stylistic Genre: The genre for this stylistic element depends on a combination of decorative technique, color, and element.

Stylistic Genre: Polychrome, warm

Related Stylistic Element Data:

DecTech	Color	Sty. Element	Motif
Painted, under free hand	Yellow-Red, Intense Medium	Garland 03	Individual A
Painted, under free hand	Yellow, Muted Dark	Garland 03	Individual A
Painted, under free hand	Purple-Blue, Intense Dark	Garland 03	Individual A

Garland 04



Garland 4 is characterized by a blue undulating line that has small mustard colored leaves and large, feathery green foliage emanating from the line.

Stylistic Genre: The genre for this stylistic element depends on a combination of decorative technique, color, and element.

Stylistic Genre: Polychrome, warm

Related Stylistic Element Data:

DecTech	Color	Sty. Element	Motif
Painted, under free hand	Yellow-Red, Intense Medium	Garland 04	Individual A
Painted, under free hand	Yellow, Muted Medium	Garland 04	Individual A
Painted, under free hand	Purple-Blue, Intense Dark	Garland 04	Individual A

Garland 05



Garland 5 is characterized by closely-spaced hatch marks or solid circles attached to a undulating band.

Stylistic Genre: The genre for this stylistic element depends on a combination of decorative technique, color, and element.

Stylistic Genre: Polychrome, warm

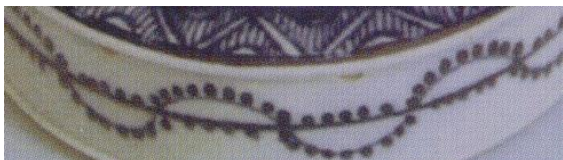
Related Stylistic Element Data:

DecTech	Color	Sty. Element	Motif
Painted, under free hand	Yellow-Red, Muted Medium	Garland 05	Individual A

Stylistic Genre: Handpainted Blue

Related Stylistic Element Data:

DecTech	Color	Sty. Element	Motif
Painted, under free hand	Purple-Blue, Intense Dark	Garland 05	Individual A



--	--	--

Garland 06



Garland 6 is characterized by an undulating line, with an alternating pattern of a feather-like leaf followed by three leaves on each side: two dark colored with one yellow leaf in the middle.

Stylistic Genre: The genre for this stylistic element depends on a combination of decorative technique, color, and element.

Stylistic Genre: Polychrome, warm

Related Stylistic Element Data:

DecTech	Color	Sty. Element	Motif
Painted, under free hand	Yellow, Intense Light	Garland 06	Individual A
Painted, under free hand	Yellow, Muted Dark	Garland 06	Individual A

Garland 07



Garland 7 is characterized by an undulating line that forms a stylized “stem” with alternating flower elements that extend from it. Two green leaves extend from it, alternating with three small blue circular “blooms.” A solid line bisects the garland horizontally. Both this line as well as the garland are regularly interrupted with a blue X. A “starburst” element is also part of the element; its exact placement is not clear.

Stylistic Genre: The genre for this stylistic element depends on a combination of decorative technique, color, and element.

Stylistic Genre: Polychrome, warm

Related Stylistic Element Data:

DecTech	Color	Sty. Element	Motif
Painted, under free hand	Green-yellow, Intense Medium	Garland 07	Individual A
Painted, under free hand	Yellow, Muted Dark	Garland 07	Individual A
Painted, under free hand	Blue, Intense Medium	Garland 07	Individual A

Garland 08



A band of connected trumpet-shaped, three-lobed flowers oriented in one direction, though the direction may change at a central point. In this example, the garland forms a meandering frame around a central text or scene.

Stylistic Genre: The genre for this stylistic element depends on a combination of decorative technique, color, and element.

Stylistic Genre: Handpainted Blue

Related Stylistic Element Data:

DecTech	Color	Sty. Element	Motif
Painted, under free hand	Purple-Blue, Muted Dark	Garland 08	Individual A

Garland 09



Composed of a central band (made up of connected ovals) with a meandering band atop it. Various floral elements extend from the meandering band, punctuated by symmetrical radial flowers at central points. In this example the garland forms a circular frame around central text.

Stylistic Genre: The genre for this stylistic element depends on a combination of decorative technique, color, and element.

Stylistic Genre: Handpainted Blue

Related Stylistic Element Data:

DecTech	Color	Sty. Element	Motif
Painted, under free hand	Purple-Blue, Muted Dark	Garland 09	Individual A

Garland 10



A double plain band with a meandering band atop it. The meandering band is composed of closely-spaced chevron elements oriented in the same direction. A single large dot is alternated with the meandering band, placed in the blank spaces between its peaks and troughs.

Stylistic Genre: The genre for this stylistic element depends on a combination of decorative technique, color, and element.

Stylistic Genre: Handpainted Blue

Related Stylistic Element Data:

DecTech	Color	Sty. Element	Motif
Painted, under free hand	Purple-Blue, Muted Dark	Garland 10	Individual A

Garland 11



A central plain band with a meandering band atop it. Three-part floral elements extend from curved "stems" oriented in one direction off of the meandering band at close intervals.

Stylistic Genre: The genre for this stylistic element depends on a combination of decorative technique, color, and element.

Stylistic Genre: Handpainted Blue

Related Stylistic Element Data:

DecTech	Color	Sty. Element	Motif
Painted, under free hand	Purple-Blue, Muted Dark	Garland 11	Individual A

Garland 12



A single plain band with a meandering band atop it. The meandering band is composed of closely-spaced “leaves” oriented in the same direction. A three-part stacked half-circle element is alternated with the meandering band, placed in the blank spaces between its peaks and troughs

Stylistic Genre: The genre for this stylistic element depends on a combination of decorative technique, color, and element.

Stylistic Genre: Handpainted Blue

Related Stylistic Element Data:

DecTech	Color	Sty. Element	Motif
Painted, under free hand	Blue, Muted Dark	Garland 12	Individual A

Garland 13



Garland 13 is characterized by an undulating solid wavy line with dots on the inside of each curve. The dots appear on both sides of the wavy line. This wavy line is similar to Wavy Band 07. In addition, sprigs comprised of brown lines and green ovals (leaves) are present in the curves created by the undulating line.

Stylistic Genre: The genre for this stylistic element depends on a combination of decorative technique, color, and element.

Stylistic Genre: Polychrome, warm

Related Stylistic Element Data:

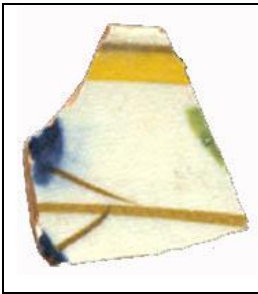
DecTech	Color	Sty. Element	Motif
Painted, under free hand	Green-yellow, Muted Medium	Garland 08	Individual A
Painted, under free hand	Yellow-Red, Intense Medium	Garland 08	Individual A
Painted, under free hand	Purple-Blue, Intense Dark	Garland 08	Individual A
Painted, under free hand	Green-Yellow, Muted Medium	Garland 08	Individual A

Garland, unid.

Garland, unid. should be used when small, unidentifiable portions of a garland are present on a sherd. It is often the case that one can identify the decoration as a garland but cannot specify which exact

Stylistic Genre: Polychrome, warm

Related Stylistic Element Data:



garland is represented. Garland, unid. should be used in these cases.

Stylistic Genre: The genre for this stylistic element depends on a combination of decorative technique, color, and element.

DecTech	Color	Sty. Element	Motif
Painted, under free hand	Purple-Blue, Intense Dark	Garland, unid.	Individual A
Painted, under free hand	Yellow, Intense Medium	Garland, unid.	Individual A

Geometric Band 01



This band is characterized by a central area of connected and overlapping diamond elements. The diamonds are connected above and below by arcs.

Stylistic Genre: The genre for this stylistic element depends on a combination of decorative technique, color, and element.

Stylistic Genre: Slipware, factory made

Related Stylistic Element Data:

DecTech	Color	Sty. Element	Motif
Slip, lathe-engine-turned	Yellow-Red, Muted Medium	Plain Band 01	Stacked Combination A
Slip, inlaid	Red/Yellow-Red, Muted Dark	Geometric Band 01	Stacked Combination A
Slip, inlaid	Red/Yellow-Red, Muted Dark	Plain Band 02	Stacked Combination A

Geometric Band 02



Geometric Band 02 combines garland and trellis motifs to form a neoclassical geometric band. Thin diagonal double lines that form a V pattern with a small dot at the base are bound between two thinly painted bands. A simple leaf garland weaves its way through the double-line V's.

Stylistic Genre: The genre for this stylistic element depends on a combination of decorative technique, color, and element.

Stylistic Genre: Handpainted Blue

Related Stylistic Element Data:

DecTech	Color	Sty. Element	Motif
Painted, under free hand	Purple-Blue, Intense Dark	Geometric Band 02	Individual A

Geometric Band 12



Several different stylistic elements compose this band which can be divided into two major design sections. The bottom design portion is Dot Band 01, and is considered part of Geometric Band 12's design. The upper portion of the band is filled with large ovals that have shaded ovals within them. A diagonal dotted line connects the ovals. There are single dots flanking either side of the dotted line.

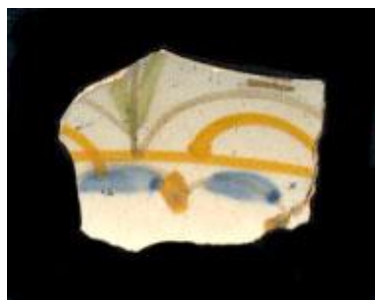
Stylistic Genre: The genre for this stylistic element depends on a combination of decorative technique, color, and element.

Stylistic Genre: Polychrome, warm

Related Stylistic Element Data:

DecTech	Color	Sty. Element	Motif
Painted, under free hand	Yellow-Red, Muted Medium	Geometric Band 12	Individual A
Painted, under free hand	Purple-Blue, Intense Medium	Geometric Band 12	Individual A
Painted, under free hand	Yellow, Muted Medium	Geometric Band 12	Individual A

Geometric Band 14



Our understanding of this band is still incomplete. We do not know what the top portion of the decoration looks like but the base is a series of repeating half-circle arcs with dots and blue lozenges in the half-circles. Above the half-circles are repeating horizontal and vertical lines.

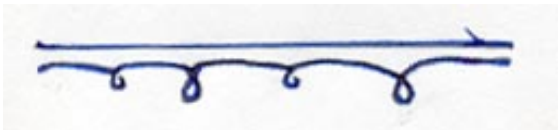
Stylistic Genre: The genre for this stylistic element depends on a combination of decorative technique, color, and element.

Stylistic Genre: Polychrome, warm

Related Stylistic Element Data:

DecTech	Color	Sty. Element	Motif
Painted, under free hand	Yellow-Red, Muted Dark	Geometric Band 14	Individual A
Painted, under free hand	Yellow-Red, Intense Medium	Geometric Band 14	Individual A
Painted, under free hand	Purple-Blue, Intense Medium	Geometric Band 14	Individual A
Painted, under free hand	Green-Yellow, Muted Medium	Geometric Band 14	Individual A

Geometric Band 15



Underneath a single, solid line is an outstretched curlicue. It is similar to a half-circle band with small loops at the point where one half circle meets the next.

Stylistic Genre: The genre for this stylistic element depends on a combination of decorative technique, color, and element.

Stylistic Genre: Overglaze, handpainted

Related Stylistic Element Data:

DecTech	Color	Sty. Element	Motif
Painted, over free hand	Unidentifiable	Geometric Band 15	Individual A

Geometric Band 19



A series of backwards S's bisected with horizontal lines.

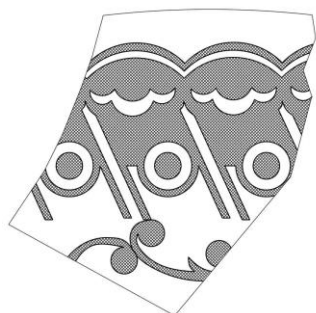
Stylistic Genre: Slipware, factory made

Stylistic Genre: Slipware, factory made

Related Stylistic Element Data:

DecTech	Color	Sty. Element	Motif
Slip, inlaid	Yellow-red, muted dark	Geometric Band 19	Individual A

Geometric Band 20



This band consists of arches on top of a series of swags, which are on top of diagonal lines and circles. Commonly found on overglazed porcellaneous porcelains.

Stylistic Genre: Overglaze, handpainted

Stylistic Genre: Overglaze, handpainted

Related Stylistic Element Data:

DecTech	Color	Sty. Element	Motif
Painted, over free hand	Unidentified	Geometric Band 20	Individual A

Geometric Band 21



A series of opposite triangles separated by diagonal spaces. Inside the triangles are half circle shapes with radiating lines running out to the enclosing edges of the triangle. Commonly found on handpainted pearlware.

Stylistic Genre: The genre for this stylistic element depends on a combination of decorative technique, color, and element.

Stylistic Genre: Handpainted Blue

Related Stylistic Element Data:

DecTech	Color	Sty. Element	Motif
Painted, under free hand	Purple-Blue, Intense Dark	Geometric Band 21	Individual A

Geometric Band 22



This band consists of thick, rectangular lines aligned perpendicular to the rim of the sherd. The space in between lines is shaded. It is between two bands of small, bead-like dots of paint.

Stylistic Genre: The genre for this stylistic element depends on a combination of decorative technique, color, and element.

Stylistic Genre: Overglaze, handpainted

Related Stylistic Element Data:

DecTech	Color	Sty. Element	Motif
Painted, over free hand	Yellow, Muted Light	Geometric Band 22	Individual A

Geometric Band 23



This band consists of a series of repeated lines of a group of vertical lines arrayed in a fan shape.

Stylistic Genre: This element is executed using engine turning and is therefore considered a Factory-made Slipware.

Stylistic Genre: Slipware, factory made

Related Stylistic Element Data:

DecTech	Color	Sty. Element	Motif
Incised, lathe/engine turned	No applied color	Geometric Band 23	Individual A

Geometric Band 25



Geometric shapes arrayed in rectangular groups with the voids in-between forming an 'X' and four-lobe element.

Stylistic Genre: Slipware, factory made

Stylistic Genre: Slipware, factory made

Related Stylistic Element Data:

DecTech	Color	Sty. Element	Motif
Slip, inlaid	Yellow-Red, Muted Dark	Geometric Band 25	Individual A

Geometric Band 26



Example A

Band consisting of a simple angular zigzag. Seen here flanked by half circle and scalloped bands.

Example A Stylistic Genre: Slipware, factory made

Example A Stylistic Genre: Slipware, factory made

Related Stylistic Element Data:

DecTech	Color	Sty. Element	Motif
Slip, inlaid	Yellow-Red, Intense Dark	Geometric Band 26	Stacked Combination A
Slip, inlaid	Yellow-Red, Intense Dark	Scallop Band 06	Stacked Combination A
Slip, inlaid	Yellow-Red, Intense Dark	Half-circle Band 01	Stacked Combination A



Example B

Example B Stylistic Genre: None (leave field blank)

Example B Stylistic Genre: None (leave field blank)

Related Stylistic Element Data:

DecTech	Color	Sty. Element	Motif
Incised, lathe/engine turned	No applied color	Geometric Band 26	Individual A

Geometric Band 27



Series of closely-spaced bands of primarily straight lines periodically interpreted by upward arcs.

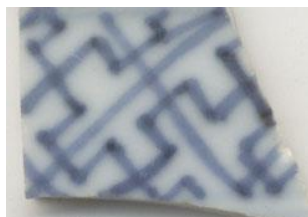
Stylistic Genre: Slipware, factory made

Stylistic Genre: Slipware, factory made

Related Stylistic Element Data:

DecTech	Color	Sty. Element	Motif
Slip, inlaid	Neutrals, Dark	Geometric Band 27	Individual A

Geometric Band 32



A band formed by a series of connected geometric “puzzle piece” shapes, oriented diagonally. A large “X” (presumably appearing at regular intervals) extends the entire thickness of the band.

Stylistic Genre: The genre for this stylistic element depends on a combination of decorative technique, color, and element.

Stylistic Genre: Handpainted Blue

Related Stylistic Element Data:

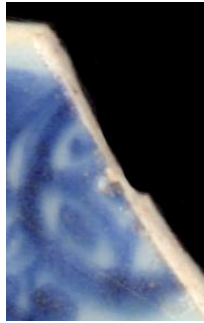
DecTech	Color	Sty. Element	Motif
Painted, under free hand	Purple-Blue, Muted Dark	Geometric Band 32	Individual A

Geometric Band, unid.

This classification should be used when small, unidentifiable portions of a geometric band are present on a sherd. It is often the case that one can identify the decoration as a geometric band but cannot specify which exact geometric band is represented. Geometric Band, unid. should be used in these cases.

Stylistic Genre: The genre for this stylistic element depends on a combination of decorative technique, color, and element.

Geometric Circle



This is an open circle with a diamond in the center, forming 5 compartments (including the center of the diamond). Each compartment has a dot in the middle.

Stylistic Genre: The genre for this stylistic element depends on a combination of decorative technique, color, and element.

Stylistic Genre: Handpainted Blue

Related Stylistic Element Data:

DecTech	Color	Sty. Element	Motif
Painted, under free hand	Purple-Blue, Intense Dark	Geometric Circle	Individual A

Geometric Column 01




Geometric Column 1 is characterized by a vertical band, or column, of solid diamonds that have a small open circle of white (the color of the body) in their centers. Thinly painted crossed lines separate each diamond.

Stylistic Genre: The genre for this stylistic element depends on a combination of decorative technique, color, and element.

Stylistic Genre: Handpainted Blue

Related Stylistic Element Data:

DecTech	Color	Sty. Element	Motif
Painted, under free hand	Purple-Blue, Intense Dark	Geometric Column 1	Stacked Combination 1

<p>Geometric, unid.</p>	<p>Use this term when you have an unidentifiable geometric element. If you can tell that it is a band, use Geometric Band, unid. instead.</p> <p>Stylistic Genre: The genre for this stylistic element depends on a combination of decorative technique, color, and element.</p>									
<p>Granulated Band</p> 	<p>Seen most often on dry-bodied stonewares such as Black Basalt and Rosso Antico, Granulated Band 1 is an engine-turned band of repeating small, slightly square impressions.</p> <p>Stylistic Genre: None (leave field blank)</p>	<p>Stylistic Genre: None (leave field blank)</p> <p>Related Stylistic Element Data:</p> <table border="1" data-bbox="1182 789 2060 935"> <thead> <tr> <th>DecTech</th> <th>Color</th> <th>Sty. Element</th> <th>Motif</th> </tr> </thead> <tbody> <tr> <td>Incised, lathe/engine turned</td> <td>No Applied Color</td> <td>Granulated Band</td> <td>Individual A</td> </tr> </tbody> </table>	DecTech	Color	Sty. Element	Motif	Incised, lathe/engine turned	No Applied Color	Granulated Band	Individual A
DecTech	Color	Sty. Element	Motif							
Incised, lathe/engine turned	No Applied Color	Granulated Band	Individual A							

Grass



Grass elements can range from short grass tufts (top picture) to long, curved grass with tufts at the end (bottom picture). Seen on both painted porcelains and earthenwares, grass is usually a grouping of thin lines that can be short and straight or long and curved and anywhere in-between.

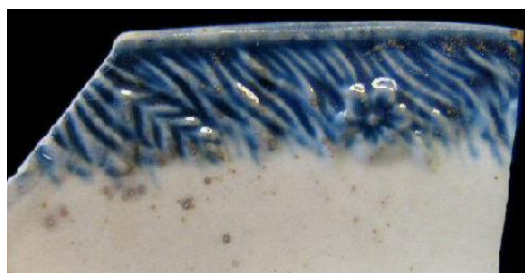
Stylistic Genre: The genre for this stylistic element depends on a combination of decorative technique, color, and element.

Stylistic Genre: Handpainted Blue

Related Stylistic Element Data:

DecTech	Color	Sty. Element	Motif
Painted, under free hand	Purple-Blue, Intense Dark	Grass	Individual A

Grasses and Leaves Molded Edge



A molded band named “Grass & Daisies” by the staff at the Maryland Archaeological Conservation Laboratory (see <http://www.jcfpat.org/diagnostic/Post-Colonial%20Ceramics/Shell%20Edged%20Wares/Embossed%20thumbnails.htm>).

Stylistic Genre: Molded Edge Decoration, other

Stylistic Genre: Molded Edge Decoration, other

Related Stylistic Element Data:

DecTech	Color	Sty. Element	Motif
Molded	Not Applicable	Grasses and Leaves Molded Edge	Individual A
Painted, under free hand	Purple-Blue, Intense Dark	Grasses and Leaves Molded Edge	Individual A

