

DAACS Stylistic Element Glossary

A-C

by Beatrix Arendt, Lynsey Bates, Leslie Cooper, Jillian Galle,
Elizabeth Sawyer, Jesse Sawyer, and Karen Smith


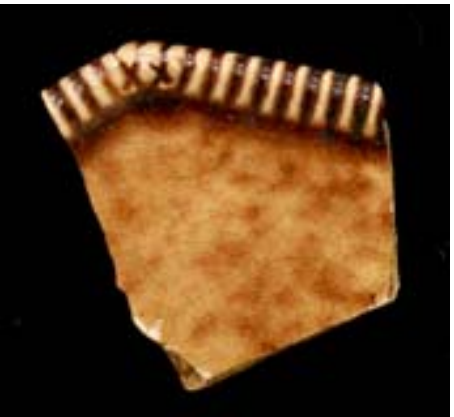
Last Updated October 2018

Acanthus Leaves	6
Angular Edge.....	6
Animal, unidentifiable	7
Bamboo 01.....	7
Bamboo 02.....	8
Band, unidentified.....	8
Barley	9
Basket Weave 01	9
Basket Weave 02.....	10
Basket Weave 03.....	10
Basket Weave 04.....	11
Basketwork	11
Bead and Reel 01	13
Bead and Reel 02	13
Beaded Band 01	14
Beaded Band 02	14
Beaded Band 03	15
Beaded Band 04.....	15
Beaded Band 05	16
Bird, crane.....	16
Bird, peacock.....	17
Bird, stylized	17
Bird, unidentifiable species.....	18
Boat.....	18
Book	19
Botanical Band 01.....	19
Botanical Band 02.....	20
Botanical Band 03.....	20
Botanical Band 04.....	20
Botanical Band 05.....	21
Botanical Band 06.....	21
Botanical Band 07.....	22
Botanical Band 08.....	22
Botanical Band 10.....	23
Botanical Band 11.....	23
Botanical Band 13.....	24
Botanical Band 14.....	24
Botanical Band 15.....	24

Botanical Band 16.....	25
Botanical Band 17.....	25
Botanical Band 18.....	26
Botanical Band 19.....	26
Botanical Band 20.....	26
Botanical Band 22.....	27
Botanical Band 24.....	27
Botanical Band 25.....	27
Botanical Band 26.....	29
Botanical Band 27.....	29
Botanical Band 28.....	30
Botanical Band 29.....	30
Botanical Band 31.....	31
Botanical Band 32.....	31
Botanical Band 33.....	32
Botanical Band 34.....	32
Botanical Band 35.....	32
Botanical Band 36.....	33
Botanical Band 38.....	33
Botanical Band 39.....	33
Botanical Band 41.....	34
Botanical Band 42.....	34
Botanical Band 43.....	34
Botanical Band 45.....	35
Botanical Band 46.....	35
Botanical Band 47.....	35
Botanical Band 48.....	36
Botanical Band 51.....	36
Botanical Band 52.....	36
Botanical Band 55.....	37
Botanical Band 56.....	37
Botanical Band 57.....	37
Botanical Band 58.....	38
Botanical Band 59.....	38
Botanical Band 60.....	39
Botanical Band 61.....	39
Botanical Band, unid.....	39
Botanical, composite.....	40
Botanical, sprig.....	41
Botanical, unidentified.....	41

Bridge	42
Buddhist Symbol.....	42
Bull's Eye.....	43
Butterfly.....	43
Cable Band 02	44
Cable Band 03	44
Cable Band 04	44
Cable Band 05	45
Cartouche 01	45
Cartouche 02	46
Cat's Eye, single	46
Cat's Eye, combed	47
Chain Band 01.....	47
Chain Band 02.....	48
Chain Band 03.....	48
Chain Band 03.....	48
Chain Band 04.....	49
Chain Band 05.....	49
Chain Band 06.....	50
Chain Band 07.....	50
Chain Band 08.....	50
Chain Band 09.....	51
Chain Band 10.....	51
Chain Band 11.....	52
Chain Band 12.....	52
Chain Band 13.....	53
Chain Band 14.....	53
Checkerboard Band, unid.....	53
Checkerboard Dot.....	54
Checkerboard/Diamonds	54
Child	55
Chinese Characters	55
Church, Christian.....	56
Circle 01	56
Circle Band 01	57
Circle Band 02.....	57
Circle Band 03.....	58
Circle Band 04.....	58
Circle Band 06.....	58
Circle Band 07.....	59

Circle Band 09..... 59
Circle Band 10..... 60
Circle Band 11..... 60
Circle Band 13..... 60
Circle Band 15..... 61
Circle Band 16..... 61
Circle Band 17..... 61
Circle Band 18..... 62
Circle, open..... 62
Cloud Band 01..... 62
Clouded 64
Coin 64
Columns 64
Combed..... 65
Common Cable..... 65
Cordoned 66
Crab 68
Crab Stock 68
Crenelated Edge..... 68

Stylistic Element Name and Image	Characteristics	Cataloging Example for the Depicted Sherd																
<p data-bbox="210 97 441 138">Acanthus Leaves</p> 	<p data-bbox="640 73 1165 211">Acanthus leaves are most often molded decorative elements on refined stonewares, such as Black Basalt or Rosso Antico.</p> <p data-bbox="640 243 1155 284">Stylistic Genre: None (leave field blank)</p>	<p data-bbox="1365 105 1879 138">Stylistic Genre: None (leave field blank)</p> <p data-bbox="1407 170 1837 211">Related Stylistic Element Data:</p> <table border="1" data-bbox="1186 243 2047 316"> <thead> <tr> <th data-bbox="1186 243 1375 284">DecTech</th> <th data-bbox="1375 243 1627 284">Color</th> <th data-bbox="1627 243 1858 284">Sty. Element</th> <th data-bbox="1858 243 2047 284">Motif</th> </tr> </thead> <tbody> <tr> <td data-bbox="1186 284 1375 316">Sprig Molded</td> <td data-bbox="1375 284 1627 316">No Applied Color</td> <td data-bbox="1627 284 1858 316">Acanthus Leaves</td> <td data-bbox="1858 284 2047 316">Individual A</td> </tr> </tbody> </table>	DecTech	Color	Sty. Element	Motif	Sprig Molded	No Applied Color	Acanthus Leaves	Individual A								
DecTech	Color	Sty. Element	Motif															
Sprig Molded	No Applied Color	Acanthus Leaves	Individual A															
<p data-bbox="210 649 420 690">Angular Edge</p> 	<p data-bbox="640 625 1165 730">This edge differs from a scalloped edge in that it has a straight edge that is angled, rather than a curved edge.</p> <p data-bbox="640 868 1155 909">Stylistic Genre: None (leave field blank)</p>	<p data-bbox="1365 657 1879 690">Stylistic Genre: None (leave field blank)</p> <p data-bbox="1407 722 1837 763">Related Stylistic Element Data:</p> <table border="1" data-bbox="1186 795 2047 1144"> <thead> <tr> <th data-bbox="1186 795 1417 836">DecTech</th> <th data-bbox="1417 795 1648 836">Color</th> <th data-bbox="1648 795 1879 836">Sty. Element</th> <th data-bbox="1879 795 2047 836">Motif</th> </tr> </thead> <tbody> <tr> <td data-bbox="1186 836 1417 933">Molded</td> <td data-bbox="1417 836 1648 933">No Applied Color</td> <td data-bbox="1648 836 1879 933">Angular Edge</td> <td data-bbox="1879 836 2047 933">Individual A</td> </tr> <tr> <td data-bbox="1186 933 1417 1039">Molded</td> <td data-bbox="1417 933 1648 1039">No Applied Color</td> <td data-bbox="1648 933 1879 1039">Molded Band 01</td> <td data-bbox="1879 933 2047 1039">Individual B</td> </tr> <tr> <td data-bbox="1186 1039 1417 1144">Applied Powder/Crystals</td> <td data-bbox="1417 1039 1648 1144">Yellow-Red, Muted Dark</td> <td data-bbox="1648 1039 1879 1144">Tortoiseshell</td> <td data-bbox="1879 1039 2047 1144">Individual C</td> </tr> </tbody> </table>	DecTech	Color	Sty. Element	Motif	Molded	No Applied Color	Angular Edge	Individual A	Molded	No Applied Color	Molded Band 01	Individual B	Applied Powder/Crystals	Yellow-Red, Muted Dark	Tortoiseshell	Individual C
DecTech	Color	Sty. Element	Motif															
Molded	No Applied Color	Angular Edge	Individual A															
Molded	No Applied Color	Molded Band 01	Individual B															
Applied Powder/Crystals	Yellow-Red, Muted Dark	Tortoiseshell	Individual C															

Animal, unidentifiable



Use this stylistic element when there is a decorative element that represents part of an animal, for instance a head, but when there is not enough of the body to determine the specific type of animal. This designation can also be used for stylized animals, when the type of animal cannot be determined.

Stylistic Genre: The genre for this stylistic element depends on a combination of decorative technique, color, and element. In the case of the example to the left, the stylistic genre is “Blue, molded/stamped/incised”. If the animal were painted using a polychrome, warm palette, then the genre would be “Polychrome, warm”.

Stylistic Genre: Blue, molded/stamped/incised

Related Stylistic Element Data:

DecTech	Color	Sty. Element	Motif
Incised, free hand	Not Applicable	Animal, unid.	Individual A
Painted, under free hand	Purple-Blue, Intense Dark	Animal, unid.	Individual A

Bamboo 01



The Bamboo stylistic element is characterized by thinly spaced vertical parallel lines with short horizontal lines that represent joints in the plant. There will occasionally be thin, dark, feathery leaves associated with the plant.

Stylistic Genre: The genre for this stylistic element depends on a combination of decorative technique, color, and element. In the case of the example to the left, the stylistic genre is “Hand painted Blue”. If the bamboo were painted using a polychrome, warm palette, then the genre would be “Polychrome, warm”.

Stylistic Genre: Handpainted Blue

Related Stylistic Element Data:

DecTech	Color	Sty. Element	Motif
Painted, under free hand	Purple-Blue, Intense Dark	Bamboo 01	Individual A

Bamboo 02



Seen on handles. Characterized by regularly spaced molded and painted “ribs” meant to mimic cane joints.

Stylistic Genre: The genre for this stylistic element depends on a combination of decorative technique, color, and element. In the case of the example to the left, the stylistic genre is “Polychrome, Warm”.

Stylistic Genre: Polychrome, warm

Related Stylistic Element Data:

DecTech	Color	Sty. Element	Motif
Painted, under free hand	Yellow, Muted Dark	Bamboo 02	Individual A
Molded	Not Applicable	Bamboo 02	Individual A

Band, unidentified

Use this term when it is impossible to identify the type of band present on the sherd. Often there will be a sherd that has a portion of a band but it is impossible to determine even the general category of band. In such cases “Band, unid.” is used to describe the element.

Stylistic Genre: The genre for this stylistic element depends on a combination of decorative technique, color, and element.

Barley



Molded decoration usually seen on White Salt-glazed stoneware, Creamware, and Whieldon wares. Barley decoration is characterized by raised beads (or barleys) that have a wavy, molded pattern surrounding the beads, as if imitating barley husks. Do not record the type of edge (rim) unless it is “spiked” (see “Scalloped edge, spiked”).

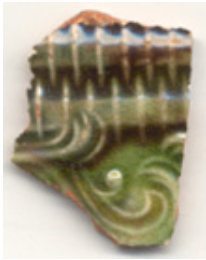
Stylistic Genre: Barley

Stylistic Genre: Barley

Related Stylistic Element Data:

DecTech	Color	Sty. Element	Motif
Molded	No Applied Color	Barley	Individual A

Basket Weave 01



Molded design found most often on Creamware, Whieldon, and White Salt-glazed stoneware. Characterized by multiple thin molded lines that cross over and under wider, molded bands giving the appearance of a woven surface. Do not record the type of edge (rim) unless it is “spiked,” like the second example (see “Scalloped edge, spiked”).

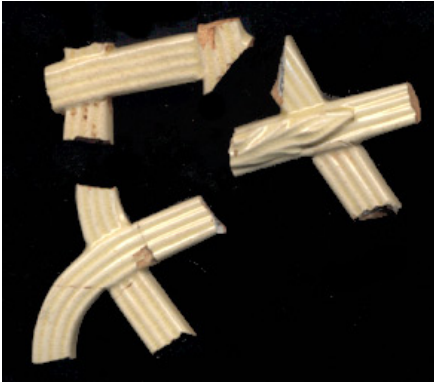
Stylistic Genre:
Dot/Diaper/Basketweave

Stylistic Genre: Dot/Diaper/Basketweave

Related Stylistic Element Data:

DecTech	Color	Sty. Element	Motif
Applied Powder/Crystals	Green, Muted Dark	Solid	Individual A
Molded	Not Applicable	Basket Weave 01	Individual A

Basket Weave 02



Thin, molded ribbed strips of ceramic, most often Creamware, which are woven together to form a basket-like vessel. The thin ribbed segments are called Basket Weave 2. Please note that this stylistic element does not necessarily reflect the form of the vessel. Often seen on White Salt-glazed stoneware.

Any sprigged elements should be recorded separately.

Stylistic Genre: None (leave field blank)

Stylistic Genre: None (leave field blank)

Related Stylistic Element Data:

DecTech	Color	Sty. Element	Motif
Molded	No Applied Color	Basket Weave 02	Individual A
Sprig Molded	No Applied Color	Botanical, unid	Individual A

Basket Weave 03



This stylistic element is characterized by a pierced lattice-like design, often part of a dot/diaper type combination band.

Stylistic Genre: Dot/Diaper/Basket

Stylistic Genre: Dot/Diaper/Basketweave

Related Stylistic Element Data:

DecTech	Color	Sty. Element	Motif
Molded	No Applied Color	Basket Weave 03	Individual A

Basket Weave 04



This stylistic element resembles interwoven “chevrons” that form a type of basket pattern. Often seen on White Salt-glazed stoneware.

Stylistic Genre: Dot/Diaper/Basket

Stylistic Genre: Dot/Diaper/Basketweave

Related Stylistic Element Data:

DecTech	Color	Sty. Element	Motif
Molded	No Applied Color	Basket Weave 04	Individual A

Basketwork



Molded or engine-turned lines that are on a vessel body. Basketwork is a general term used to capture all variation in this element type. For example, these finely turned lines might be executed in different widths, directions and over a molded or fluted body. Any combination of these lines should be cataloged as Basketwork. Seen most often on Black Basalt and Rosso Antico. Molded versions on later wares.

Stylistic Genre: None (leave field blank)

Stylistic Genre: None (leave field blank)

Related Stylistic Element Data:

DecTech	Color	Sty. Element	Motif
Incised, Lathe/Engine Turned	No Applied Color	Basketwork	Individual A



Bead and Reel 01



Bead and Reel is characterized by a single row of molded, alternating beads and thin, vertical double lines. It may be difficult to distinguish this element from Bead and Reel 02, which consists of alternating oval lozenges with two thin lines oriented on a diagonal. The key differences between these two bands are the size of the beads and lozenges and the fact that Bead and Reel 02 is meant to look like a twisted cable or rope. The beads on Bead and Reel 01 are more circular and pronounced.

Stylistic Genre: Bead and Reel

Stylistic Genre: Bead and Reel

Related Stylistic Element Data:

DecTech	Color	Sty. Element	Motif
Molded	No Applied Color	Bead and Reel 01	Individual A

Bead and Reel 02



This molded band is seen most often on early molded refined wares like Creamware. A chain of solid raised ovals oriented on a diagonal that are separated by two thin diagonal lines characterizes Bead and Reel 02. Similar to Bead and Reel 01. The key differences between these two bands are the size of the beads and lozenges and the fact that Bead and Reel 02 is meant to look like a twisted cable or rope. The beads on Bead and Reel 01 are more circular and pronounced.

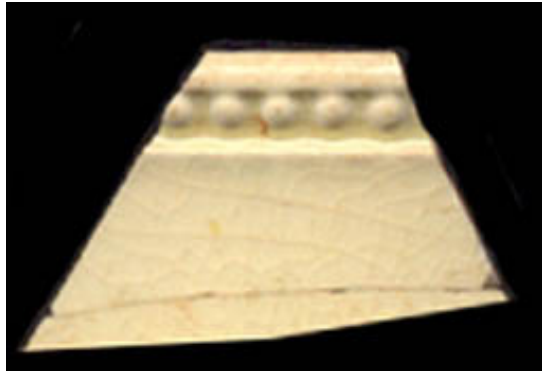
Stylistic Genre: Bead and Reel

Stylistic Genre: Bead and Reel

Related Stylistic Element Data:

DecTech	Color	Sty. Element	Motif
Molded	No Applied Color	Bead and Reel 02	Individual A

Beaded Band 01



A single band of beads in a recessed panel.

Stylistic Genre: The genre for this stylistic element depends on a combination of decorative technique, color, and element.

Stylistic Genre: Molded Edge Decoration, other

Related Stylistic Element Data:

DecTech	Color	Sty. Element	Motif
Rouletted	No Applied Color	Beaded Band 01	Individual A

Beaded Band 02



A single band of molded beads; unlike Beaded Band 01, there is no recessed panel.

Stylistic Genre: Molded Edge Decoration, other

Stylistic Genre: Molded Edge Decoration, other

Related Stylistic Element Data:

DecTech	Color	Sty. Element	Motif
Molded	No Applied Color	Beaded Band 02	Individual A

Beaded Band 03



A band of rouletted beads with a vertical line between.

Stylistic Genre: Slipware, factory made

Stylistic Genre: Slipware, factory made

Related Stylistic Element Data:

DecTech	Color	Sty. Element	Motif
Rouletted	Not Applicable	Beaded Band 03	Individual A
Painted, under lathe/engine turned	Green, Intense Medium	Beaded Band 03	Individual A

Beaded Band 04



A single band of molded beads directly on the rim of the vessel.

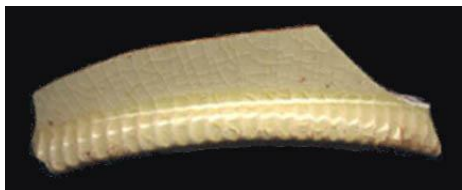
Stylistic Genre: Molded Edge Decoration, other

Stylistic Genre: Molded Edge Decoration, other

Related Stylistic Element Data:

DecTech	Color	Sty. Element	Motif
Molded	No Applied Color	Beaded Band 04	Individual A

Beaded Band 05



Repeated short vertical lines that create small channels characterize this beaded band – also called rilling. The example to the left shows this band at the foot ring/base of a vessel. These types of bands are sometimes referred to via classical architectural terms, such as beading, bead and reel.

Stylistic Genre: Molded Edge Decoration, other

Stylistic Genre: Molded Edge Decoration, other

Related Stylistic Element Data:

DecTech	Color	Sty. Element	Motif
Molded	No Applied Color	Beaded Band 05	Individual A

Bird, crane



Any depiction of a crane, which is a large, long-legged, long-necked bird that inhabits large wetlands usually.

Stylistic Genre: The genre for this stylistic element depends on a combination of decorative technique, color, and element

Stylistic Genre: Famille Verte

Related Stylistic Element Data:

DecTech	Color	Sty. Element	Motif
Painted, over free hand	Neutrals, Dark	Bird, crane	Scene Combination A
Painted, over free hand	Yellow-Red Intense Medium	Bird, crane	Scene Combination A

Bird, peacock



Peacocks are often seen on Delftware. Use this element when you can identify the entire bird or parts of a peacock such as the distinct tail, often stylized.

Stylistic Genre: The genre for this stylistic element depends on a combination of decorative technique, color, and element.

Stylistic Genre: Polychrome, other

Related Stylistic Element Data:

DecTech	Color	Sty. Element	Motif
Painted, under free hand	Purple-Blue, Intense Dark	Bird, peacock	Scene Combination A
Painted, under free hand	Purple, Muted Medium	Bird, peacock	Scene Combination A

Bird, stylized



Abstract representations of birds are seen most often on painted porcelain and Pearlwares. Stylized birds tend to be represented by short curved line in a V-formation (top left) or as V-shaped or M-shaped creatures themselves, painted much like the way we associate with children's drawings of birds (bottom left).

Stylistic Genre: The genre for this stylistic element depends on a combination of decorative technique, color, and element.

Stylistic Genre: Handpainted Blue

Related Stylistic Element Data:

DecTech	Color	Sty. Element	Motif
Painted, under free hand	Purple-Blue, Intense Dark	Bird, stylized	Individual A

Bird, unidentifiable species



Unlike “Bird, stylized,” “Bird, unidentifiable species” is easily recognizable as a bird. There will be feet, wings, a beak, etc. However, the bird depicted cannot be identified as a specific species (unlike Bird, Peacock).

Stylistic Genre: The genre for this stylistic element depends on a combination of decorative technique, color, and element.

Stylistic Genre: Handpainted Blue

Related Stylistic Element Data:

DecTech	Color	Sty. Element	Motif
Painted, under free hand	Purple-Blue, Intense Dark	Bird, unidentifiable species	Individual A

Boat



“Boat” is used for any type of vessel on water: large or small, Chinese or European, sailing ship or rowboat.

Stylistic Genre: The genre for this stylistic element depends on a combination of decorative technique, color, and element.

Stylistic Genre: Handpainted Blue

Related Stylistic Element Data:

DecTech	Color	Sty. Element	Motif
Painted, under free hand	Purple-Blue, Intense Dark	Boat	Individual A

Book



Any depiction of a book. Example image is one of the auspicious symbols found in “Hundred Antiquities” pattern.

Stylistic Genre: The genre for this stylistic element depends on a combination of decorative technique, color, and element.

Stylistic Genre: Imari
Pattern Name: Hundred Antiquities

Related Stylistic Element Data:

DecTech	Color	Sty. Element	Motif
Painted, under free hand	Purple-Blue, Intense Dark	Book	Individual A
Painted, over free hand	Red, Intense Medium	Ribbon	Individual A

Botanical Band 01



This band consists of alternating diagonal unattached lines or “branches” with small leaves forming a zigzag pattern. There is a cluster of four dots or “berries” at the end of each line or “branch.” This band is most often seen on overglaze Chinese porcelains.

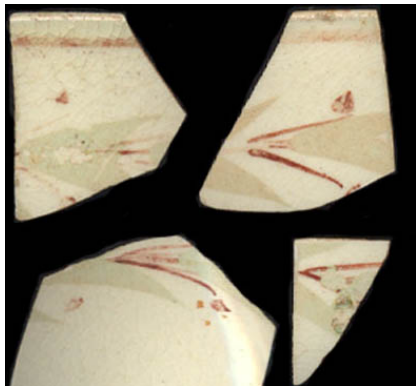
Stylistic Genre: The genre for this stylistic element depends on a combination of decorative technique, color, and element.

Stylistic Genre: Overglaze, handpainted

Related Stylistic Element Data:

DecTech	Color	Sty. Element	Motif
Painted, over free hand	Unidentifiable	Botanical Band 01	Individual A

Botanical Band 02



A line or chain of botanical elements as depicted, painted horizontally around a vessel.

Stylistic Genre: The genre for this stylistic element depends on a combination of decorative technique, color, and element.

Stylistic Genre: Overglaze, handpainted

Related Stylistic Element Data:

DecTech	Color	Sty. Element	Motif
Painted, over free hand	Red, Muted Dark	Botanical Band 02	Individual A
Painted, over free hand	Yellow, Muted Light	Botanical Band 02	Individual A

Botanical Band 03



Molded band of leaf medallions composed of four leaves surrounding a central "berry" or molded bead.

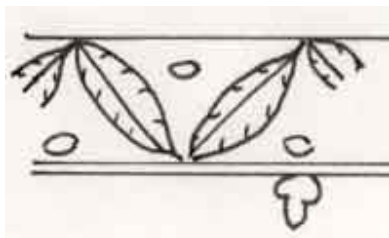
Stylistic Genre: Molded Edge Decorated, other

Stylistic Genre: Molded Edge Decoration, other

Related Stylistic Element Data:

DecTech	Color	Sty. Element	Motif
Molded	No Applied Color	Botanical Band 03	Individual A

Botanical Band 04



Botanical Band 4 consists of diagonal pairs of leaves that form a zigzag pattern. Open circles are painted in the triangular spaces formed by the leaves. Two to four thin lines bracket the leaves. Extend downward from the underside of the lowest band are small, three lobed leaves or perhaps "spearheads".

Stylistic Genre: The genre for this stylistic element depends on a combination of decorative technique, color, and element.

Stylistic Genre: Overglaze, handpainted

Related Stylistic Element Data:

DecTech	Color	Sty. Element	Motif
Painted, over free hand	Unidentifiable	Botanical Band 04	Individual A

Botanical Band 05



Botanical Band 5 is characterized by a zigzag pattern of ovals or leaf-like objects. Half-circles connect the diagonal leaves. This band also looks like an alternating pattern of upside-down and right side up lotus flowers. Botanical Band 52 is very similar, but without the connecting half-circles.

Stylistic Genre: The genre for this stylistic element depends on a combination of decorative technique, color, and element.

Stylistic Genre: Overglaze, handpainted

Related Stylistic Element Data:

DecTech	Color	Sty. Element	Motif
Painted, over free hand	Unidentifiable	Botanical Band 05	Individual A

Botanical Band 06



A linear pattern of flowers, leaves, and dots characterizes this band. Two horizontal bands bound the main pattern, which consists of a central band. Short diagonal lines come off the band and each diagonal line has a jagged flower at its end. Leaves are painted directly off of the central band and are flanked by two dots on either side.

Stylistic Genre: The genre for this stylistic element depends on a combination of decorative technique, color, and element.

Stylistic Genre: Polychrome, warm

Related Stylistic Element Data:

DecTech	Color	Sty. Element	Motif
Painted, under free hand	Red/Yellow-Red, Muted Dark	Botanical Band 06	Individual A
Painted, under free hand	Purple-Blue, Intense Dark	Botanical Band 06	Individual A
Painted, under free hand	Green-Yellow, Muted Medium	Botanical Band 06	Individual A
Painted, under free hand	Yellow-Red, Intense Medium	Botanical Band 06	Individual A

Botanical Band 07



One to two horizontal bands bound the main pattern, which consists of double diagonal lines that are crossed by a thin, undulating line (these diagonal lines can be filled with color). Small leaves are painted along the undulating line. There are also leaves or some other type of foliage at the point where the double lines intersect with the top and bottom horizontal bands. One variant of this band also has thin leaves painted between the two diagonal lines (bottom left). With its undulating line, Botanical Band 7 is similar to a garland. Since horizontal bands bound it, it's considered a band.

Stylistic Genre: The genre for this stylistic element depends on a combination of decorative technique, color, and element.

Stylistic Genre: Polychrome, warm

Related Stylistic Element Data:

DecTech	Color	Sty. Element	Motif
Painted, under free hand	Yellow-Red, Intense Medium	Botanical Band 07	Individual A
Painted, under free hand	Red/Yellow-Red, Muted Dark	Botanical Band 07	Individual A
Painted, under free hand	Green-Yellow, Muted Light	Botanical Band 07	Individual A

Botanical Band 08



It might be helpful to imagine this band as consisting of repeating halves of a butterfly. The band is characterized by a single element that repeats itself. The element consists of two “wings” or “petals” with a single, curved “antennae” or “stamen.”

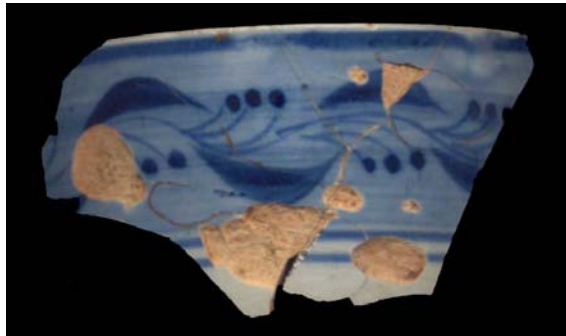
Stylistic Genre: The genre for this stylistic element depends on a combination of decorative technique, color, and element.

Stylistic Genre: Overglaze, handpainted

Related Stylistic Element Data:

DecTech	Color	Sty. Element	Motif
Painted, over free hand	Unidentifiable	Botanical Band 08	Individual A

Botanical Band 10



A linear pattern of leaves and berries characterizes this band. One to two horizontal bands bound the main pattern. There may or may not be a solid colored background between these bands. This pattern consists of undulating leaves (alternating curving upward and downward) with three solid dots, or berries. Again, the berries alternate in curving upward and downward).

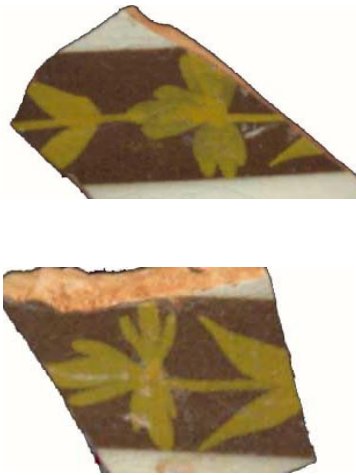
Stylistic Genre: The genre for this stylistic element depends on a combination of decorative technique, color, and element.

Stylistic Genre: Handpainted Blue

Related Stylistic Element Data:

DecTech	Color	Sty. Element	Motif
Painted, under free hand	Purple-Blue, Intense Dark	Botanical Band 10	Individual A
Painted, under free hand	Purple-Blue, Muted Medium	Botanical Band 10	Individual A

Botanical Band 11



A linear pattern of leaves and flowers characterize this band. A wide, solid colored band provides the background for a linear arrangement of alternating flowers with leaves. (Imagine flowers turned on their sides all connected by a thin central line.)

Stylistic Genre: The genre for this stylistic element depends on a combination of decorative technique, color, and element.

Stylistic Genre: Polychrome, warm

Related Stylistic Element Data:

DecTech	Color	Sty. Element	Motif
Painted, over free hand	Yellow, Intense Light	Botanical Band 11	Individual A
Painted, under free hand	Red/Yellow-Red, Muted Dark	Botanical Band 11	Individual A

Botanical Band 13



This band is characterized by a series of round, daisy-like flowers that repeat in a solid band. The band depicted shows the flowers as being unpainted, with a solid painted outline that forms the flowers. Only one layer of flowers makes up the band.

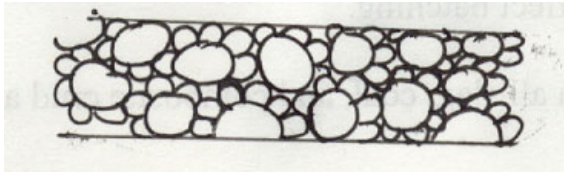
Stylistic Genre: The genre for this stylistic element depends on a combination of decorative technique, color, and element.

Stylistic Genre: Overglaze, handpainted

Related Stylistic Element Data:

DecTech	Color	Sty. Element	Motif
Painted, over free hand	Yellow-Red, Muted Medium	Botanical Band 13	Individual A
Painted, over free hand	Red, Intense Medium	Botanical Band 13	Individual A

Botanical Band 14



This band is most often seen on overglaze Chinese porcelain. It consists of many overlapping “daisy”-like flowers that are compressed between two thin lines. We have primarily seen this band in red and gold overglaze.

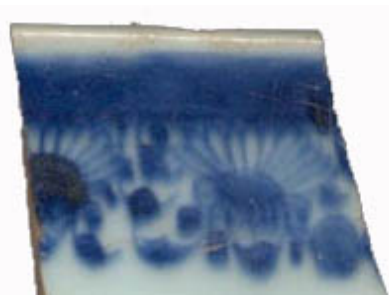
Stylistic Genre: The genre for this stylistic element depends on a combination of decorative technique, color, and element.

Stylistic Genre: Overglaze, handpainted

Related Stylistic Element Data:

DecTech	Color	Sty. Element	Motif
Painted, over free hand	Unidentifiable	Botanical Band 14	Individual A

Botanical Band 15



A thick solid band with large daisy-like flowers and other botanical elements such as leaves and buds suspended from the solid band characterize Botanical Band 15.

Stylistic Genre: The genre for this stylistic element depends on a combination of decorative technique, color, and element.

Stylistic Genre: Handpainted Blue

Related Stylistic Element Data:

DecTech	Color	Sty. Element	Motif
Painted, under free hand	Purple-Blue, Intense Dark	Botanical Band 15	Individual A

Botanical Band 16



This wide botanical band is characterized by a band of large, connected ovals from which tulip-like flowers extend upward and downward. In this example, the upper tulips are painted in blue and the lower tulips are painted in yellow.

Stylistic Genre: The genre for this stylistic element depends on a combination of decorative technique, color, and element.

Stylistic Genre: Polychrome, warm

Related Stylistic Element Data:

DecTech	Color	Sty. Element	Motif
Painted, under free hand	Purple-Blue, Intense Dark	Botanical Band 16	Individual A
Painted, under free hand	Yellow, Muted Dark	Botanical Band 16	Individual A
Painted, under free hand	Green-Yellow, Muted Medium	Botanical Band 16	Individual A
Painted, under free hand	Yellow-Red, Intense Medium	Botanical Band 16	Individual A
Painted, under free hand	Yellow, Intense Light	Botanical Band 16	Individual A

Botanical Band 17



Bound by one to two solid bands are Chrysanthemum-like flowers—flowers with multiple layers of petals. Unlike Botanical Band 14, these flowers do not overlap. The example depicted was seen on overglaze Chinese porcelain.

Stylistic Genre: The genre for this stylistic element depends on a combination of decorative technique, color, and element.

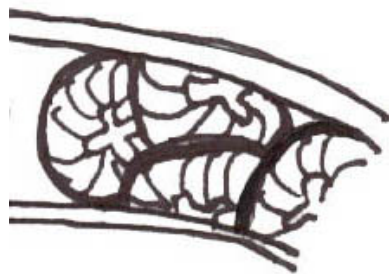
Stylistic Genre: Overglaze, handpainted

Related Stylistic Element Data:

DecTech	Color	Sty. Element	Motif
Painted, over free hand	Unidentifiable	Botanical Band 17	Individual A

1002-831E3-NOS--00241

Botanical Band 18



This Botanical Band consists of “wheels” of flowers that overlap. Each “flower wheel” has a four-“leaved” center from which radiates many thin, curved lines. May be seen with a large, distinct chrysanthemum bloom, similar to Botanical Band 17, overlapping the “wheels.” The example was seen on overglaze Chinese porcelain.

Stylistic Genre: The genre for this stylistic element depends on a combination of decorative technique, color, and element.

Stylistic Genre: Overglaze, handpainted

Related Stylistic Element Data:

DecTech	Color	Sty. Element	Motif
Painted, over free hand	Unidentifiable	Botanical Band 18	Individual A

Botanical Band 19



This band consists of connected “V-shaped leaves.” The central “leaves” are lancelet shaped and are connected to one another, outlined by larger rounded lines that are connected to the band outlines.

Stylistic Genre: The genre for this stylistic element depends on a combination of decorative technique, color, and element.

Stylistic Genre: Overglaze, handpainted

Related Stylistic Element Data:

DecTech	Color	Sty. Element	Motif
Painted, under free hand	Purple-Blue Intense Dark	Botanical Band 19	Individual A

Botanical Band 20



This band consists of connected V-shaped “leaves.” The central “leaves” are lancelet shaped and are connected to one another and to the band outline. There is a half circle with a dot in the middle within each space between the “leaves.” The band can either be bounded by one or two solid lines.

Stylistic Genre: The genre for this stylistic element depends on a combination of decorative technique, color, and element.

Stylistic Genre: Handpainted Blue

Related Stylistic Element Data:

DecTech	Color	Sty. Element	Motif
Painted, under free hand	Purple-Blue, Muted Medium	Botanical Band 20	Individual A

Botanical Band 22



This band is bound by two solid lines, one at the top and bottom. Though this is not a complete example of the band, it consists of a stylized “radiating bloom” connected to a horizontally extended botanical element with stylized “leaves” oriented in one direction.

Stylistic Genre: The genre for this stylistic element depends on a combination of decorative technique, color, and element.

Stylistic Genre: Handpainted Blue

Related Stylistic Element Data:

DecTech	Color	Sty. Element	Motif
Painted, under free hand	Purple-Blue, Muted Medium	Botanical Band 22	Stacked Combination A
Painted, under free hand	Purple-Blue, Muted Medium	Botanical, composite	Stacked Combination B
Painted, under free hand	Purple-Blue, Muted Medium	Band, unidentified	Stacked Combination C

Botanical Band 24



This band is characterized by an undulating stem with alternating botanical extensions. Extending from it is an orange leaf with two green “leaf-like” projections followed by three stacked linear projections of the stem, in a repeating pattern.

Stylistic Genre: The genre for this stylistic element depends on a combination of decorative technique, color, and element.

Stylistic Genre: Polychrome, warm

Related Stylistic Element Data:

DecTech	Color	Sty. Element	Motif
Painted, under free hand	Yellow-Red, Intense Medium	Botanical Band 24	Individual A
Painted, under free hand	Green, Muted Dark	Botanical Band 24	Individual A
Painted, under free hand	Green-Yellow, Intense Medium	Botanical Band 24	Individual A

Botanical Band 25



This band is characterized by a solid band from which extends alternating “grass” clumps and a vertical line with circular “blooms” and an unattached, associated dot cluster. The example appears around the well of the vessel.

Stylistic Genre: The genre for this stylistic element depends on a combination of decorative technique, color, and element.

Stylistic Genre: Handpainted Blue

Related Stylistic Element Data:

DecTech	Color	Sty. Element	Motif
Painted, under free hand	Purple-Blue, Intense Dark	Botanical Band 25	Individual A
Painted, under free hand	Purple-Blue, Muted Medium	Botanical Band 25	Individual A



Botanical Band 26



A linear pattern of alternating botanical elements characterizes this band. Two blue “flowers” are followed by an orange “leaf,” in a repeating pattern. The top and bottom of the follow the same pattern, but alternate with each other. The blue “flowers” on top are opposite orange “leaves” on bottom. In these examples the elements are framed by two bands.

Stylistic Genre: The genre for this stylistic element depends on a combination of decorative technique, color, and element.

Stylistic Genre: Polychrome, warm

Related Stylistic Element Data:

DecTech	Color	Sty. Element	Motif
Painted, under free hand	Yellow, Muted Medium	Botanical Band 26	Individual A
Painted, under free hand	Purple-Blue, Intense Medium	Botanical Band 26	Individual A
Painted, under free hand	Green-Yellow, Muted Medium	Botanical Band 26	Individual A
Painted, under free hand	Yellow-Red, Intense Medium	Botanical Band 26	Individual A

Botanical Band 27



The band is comprised of repeating three lobed botanicals connected by an undulating line. The undulating line has two botanical elements sprouting from the point where the line meets the large botanical element. These “sprouts” appear to alternate in their color and specific elements.

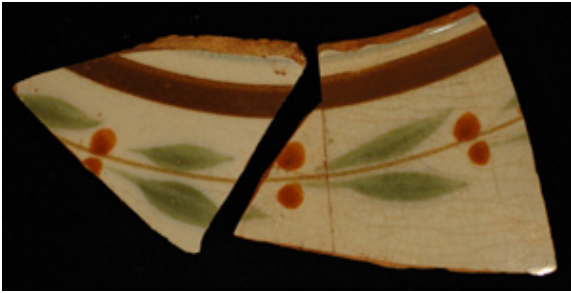
Stylistic Genre: The genre for this stylistic element depends on a combination of decorative technique, color, and element.

Stylistic Genre: Polychrome, warm

Related Stylistic Element Data:

DecTech	Color	Sty. Element	Motif
Painted, under free hand	Yellow, Muted Medium	Botanical Band 27	Individual A
Painted, under free hand	Purple-Blue, Intense Medium	Botanical Band 27	Individual A
Painted, under free hand	Green-Yellow, Muted Medium	Botanical Band 27	Individual A
Painted, under free hand	Yellow-Red, Intense Medium	Botanical Band 27	Individual A

Botanical Band 28



This band is comprised of a narrow band that has two leaves and two circles on either side of it that repeat around the band in an alternating fashion.

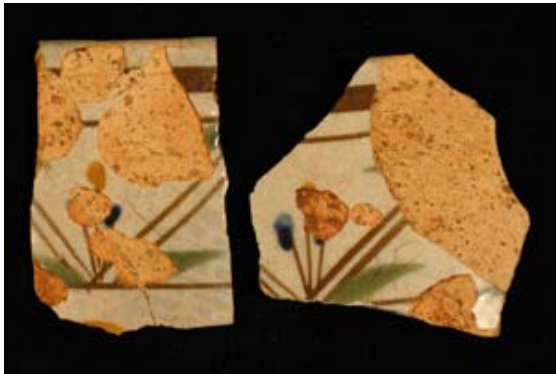
Stylistic Genre: The genre for this stylistic element depends on a combination of decorative technique, color, and element.

Stylistic Genre: Polychrome, warm

Related Stylistic Element Data:

DecTech	Color	Sty. Element	Motif
Painted, under free hand	Yellow-Red, Intense Medium	Botanical Band 28	Individual A
Painted, under free hand	Green, Muted Medium	Botanical Band 28	Individual A
Painted, under free hand	Yellow, Muted Medium	Botanical Band 28	Individual A

Botanical Band 29



One horizontal band bounds the main pattern, which consists of double diagonal lines. There are leaves or some other type of foliage at the point where the double lines intersect with the top and bottom horizontal bands. And a botanical element emerging from the center of where the horizontal lines meet the bottom horizontal band.

Stylistic Genre: The genre for this stylistic element depends on a combination of decorative technique, color, and element.

Stylistic Genre: Polychrome, warm

Related Stylistic Element Data:

DecTech	Color	Sty. Element	Motif
Painted, under free hand	Yellow, Muted Medium	Botanical Band 29	Individual A
Painted, under free hand	Purple-Blue, Intense Medium	Botanical Band 29	Individual A
Painted, under free hand	Green-Yellow, Muted Medium	Botanical Band 29	Individual A
Painted, under free hand	Yellow-Red, Intense Medium	Botanical Band 29	Individual A

Botanical Band 31



This large, florid botanical band is characterized by an undulating stem that encircles the vessel from which large “peasant-style” flowers and leaves extend. This example encircles a mug.

Stylistic Genre: The genre for this stylistic element depends on a combination of decorative technique, color, and element.

Stylistic Genre: Polychrome, warm

Related Stylistic Element Data:

DecTech	Color	Sty. Element	Motif
Painted, under free hand	Yellow, Intense Light	Botanical Band 31	Individual A
Painted, under free hand	Red/Yellow-Red, Muted Dark	Botanical Band 31	Individual A
Painted, under free hand	Green, Muted Medium	Botanical Band 31	Individual A
Painted, under free hand	Purple-Blue, Intense Dark	Botanical Band 31	Individual A

Botanical Band 32



This band consists of a serpentine band punctuated by an alternating pattern of large yellow dots and a chain of husk-like elements forming a vertical stack. Smaller orange dots appear outside the central pattern.

Stylistic Genre: The genre for this stylistic element depends on a combination of decorative technique, color, and element.

Stylistic Genre: Polychrome, warm

Related Stylistic Element Data:

DecTech	Color	Sty. Element	Motif
Painted, under free hand	Yellow-Red, Intense Medium	Botanical Band 32	Individual A
Painted, under free hand	Yellow, Intense Light	Botanical Band 32	Individual A
Painted, under free hand	Yellow, Muted Medium	Botanical Band 32	Individual A

Botanical Band 33



This band consists of a repeating pattern of fern-like leaves overlapping other triangular-shaped leaves. Also slightly similar in appearance to some spearhead bands. Commonly found on black basalt.

Stylistic Genre: The genre for this stylistic element depends on a combination of decorative technique, color, and element. For the imaged example, no genre is recorded.

Stylistic Genre: None (Leave Field Blank)

Related Stylistic Element Data:

DecTech	Color	Sty. Element	Motif
Molded	No Applied Color	Botanical Band 33	Individual A

Botanical Band 34



This botanical band consists of 3 horizontal “petal” like stacked elements with a husk or “arrow” element adjacent to the left, followed by a stack of three dots (or two dots) forming a vertical column. A variation may have part of the “arrow” almost linking to the adjacent “petal”, and the dots may also appear as a trailing line, expanding the space between each “arrow” and “petal.”

Stylistic Genre: The genre for this stylistic element depends on a combination of decorative technique, color, and element.

Stylistic Genre: Overglaze, handpainted

Related Stylistic Element Data:

DecTech	Color	Sty. Element	Motif
Painted, over free hand	Purple-Blue, Intense Dark	Botanical Band 34	Individual A

Botanical Band 35



The botanical element of this band is similar to the script letter “f” and is repeated, creating the illusion of a vine “twined” around the bands.

This band consists of two “background bands”: the top one is thinner and darker than the bottom one. There is a small space between the two bands.

Stylistic Genre: The genre for this stylistic element depends on a combination of decorative technique, color, and element.

Stylistic Genre: Overglaze, handpainted

Related Stylistic Element Data:

DecTech	Color	Sty. Element	Motif
Painted, over free hand	Unidentified	Botanical Band 35	Individual A

Botanical Band 36



This band consists of repeated elements that resemble cursive “T”s with blank space in between them. In this example, there is a thin dark band at the top and a lighter background band adjacent to it.

Stylistic Genre: The genre for this stylistic element depends on a combination of decorative technique, color, and element.

Stylistic Genre: Overglaze, handpainted

Related Stylistic Element Data:

DecTech	Color	Sty. Element	Motif
Painted, under free hand	Unidentified	Botanical Band 36	Individual A

Botanical Band 38



This band consists of repeated pieces of bamboo stalks encircling the inside of a vessel. The “joints” on the pieces of bamboo are represented with either a small space or two small leaves. Typically found on overglazed porcelains.

Stylistic Genre: The genre for this stylistic element depends on a combination of decorative technique, color, and element.

Stylistic Genre: Overglaze, handpainted

Related Stylistic Element Data:

DecTech	Color	Sty. Element	Motif
Painted, over free hand	Unidentified	Botanical Band 38	Individual A

Botanical Band 39



This band consists of single band, below which are repeating botanical elements. These include a radiating bloom with stemmed flowers on either side. This combination is repeated, with a single flower between the repeated sections. Typically found on overglazed porcelain.

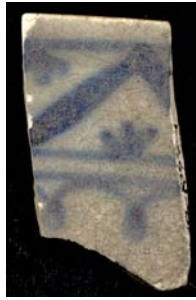
Stylistic Genre: The genre for this stylistic element depends on a combination of decorative technique, color, and element.

Stylistic Genre: Overglaze, handpainted

Related Stylistic Element Data:

DecTech	Color	Sty. Element	Motif
Painted, over free hand	Gilt	Botanical Band 39	Individual A
Painted, over free hand	Red, Intense Medium	Botanical Band 39	Individual A

Botanical Band 41



This band consists of diagonal pairs of “leaves” that form a zigzag pattern. Tufts of grass are painted in the triangular spaces formed by the leaves.

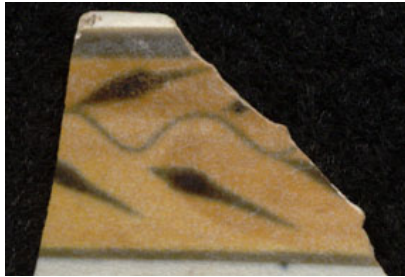
Stylistic Genre: The genre for this stylistic element depends on a combination of decorative technique, color, and element.

Stylistic Genre: Handpainted Blue

Related Stylistic Element Data:

DecTech	Color	Sty. Element	Motif
Painted, under free hand	Purple-Blue, Intense Dark	Botanical Band 41	Stacked Combination A
Painted, under free hand	Purple-Blue, Intense Dark	Half-circle Band 07	Stacked Combination B

Botanical Band 42



This band consists of a central wavy band with pointed “leaf-like” elements extending above the band at each peak, and below the band at each trough. The background of the band is solid.

Stylistic Genre: Polychrome, warm

Stylistic Genre: Polychrome, warm

Related Stylistic Element Data:

DecTech	Color	Sty. Element	Motif
Painted, under free hand	Yellow-Red, Intense Light	Botanical Band 42	Individual A
Painted, under free hand	Yellow-Red, Muted Dark	Botanical Band 42	Individual A

Botanical Band 43



A molded band named “Stylized Foliage” by the staff at the Maryland Archaeological Conservation Laboratory (see <http://www.jefpat.org/diagnostic/Post-Colonial%20Ceramics/Shell%20Edged%20Wares/Embossed%20thumbnails.htm>).

Stylistic Genre: Molded Edge Decoration, other

Stylistic Genre: Molded Edge Decoration, other

Related Stylistic Element Data:

DecTech	Color	Sty. Element	Motif
Molded	Not Applicable	Botanical Band 43	Individual A
Painted, under free hand	Purple-Blue, Intense Dark	Botanical Band 43	Individual A

Botanical Band 45



This molded band consists of a row of trees touching one another.

Stylistic Genre: Molded Edge Decoration, other

Stylistic Genre: Molded Edge Decoration, other

Related Stylistic Element Data:

DecTech	Color	Sty. Element	Motif
Molded	No Applied Color	Botanical Band 45	Individual A

Botanical Band 46



This band consists of a central wavy band with stem- and leaf-like elements extending out from the side of the band and alternating above or below the band. In this example a thin band frames the top but not the bottom.

Stylistic Genre: The genre for this stylistic element depends on a combination of decorative technique, color, and element.

Stylistic Genre: Overglaze, handpainted

Related Stylistic Element Data:

DecTech	Color	Sty. Element	Motif
Painted, over free hand	Unidentified	Botanical Band 46	Individual A

Botanical Band 47



One to two horizontal bands bound the main pattern, which consists of alternating triple and single vertical oblique lines. Small leaves are painted along the single lines. Since horizontal bands bound it, it's considered a band.

Stylistic Genre: The genre for this stylistic element depends on a combination of decorative technique, color, and element.

Stylistic Genre: Polychrome, warm

Related Stylistic Element Data:

DecTech	Color	Sty. Element	Motif
Painted, under free hand	Yellow-Red, Intense Medium	Botanical Band 47	Individual A
Painted, under free hand	Yellow-Red, Muted Dark	Botanical Band 47	Individual A
Painted, under free hand	Purple-Blue, Intense Dark	Botanical Band 47	Individual A

Botanical Band 48



Stylized meandering wheat pattern encircling proximal rim. Seen here on ironstone.

Stylistic Genre: Molded Edge Decoration, other

Stylistic Genre: Molded Edge Decoration, other

Related Stylistic Element Data:

DecTech	Color	Sty. Element	Motif
Molded	No Applied Color	Botanical Band 48	Individual A

Botanical Band 51



Similar to Botanical Band 33 but lacks the triangular peaks between the repeating pattern of fern-like leaves. Also slightly similar in appearance to some spearhead bands. Commonly found on black basalt.

Stylistic Genre: The genre for this stylistic element depends on a combination of decorative technique, color, and element.

Stylistic Genre: Not Applicable

Related Stylistic Element Data:

DecTech	Color	Sty. Element	Motif
Sprig Molded	No Applied Color	Botanical Band 51	Individual A

Botanical Band 52



Botanical Band 52 is characterized by connected ovals or leaf-like objects, creating a continuous pattern of "V's." Similar to Botanical Band 05, but without the half-circles connecting the diagonal leaves.

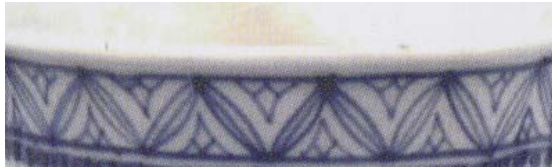
Stylistic Genre: The genre for this stylistic element depends on a combination of decorative technique, color, and element.

Stylistic Genre: Handpainted Blue

Related Stylistic Element Data:

DecTech	Color	Sty. Element	Motif
Painted, under free hand	Purple-Blue, Muted Dark	Botanical Band 52	Individual A

Botanical Band 55



This band is characterized by is characterized by connected ovals or leaf-like objects, creating a continuous pattern of "V's" with “triangles” composed of three shapes between them. Similar to Botanical Band 19 but the “triangles” in that band are a single shape.

Stylistic Genre: The genre for this stylistic element depends on a combination of decorative technique, color, and element.

Stylistic Genre: Handpainted Blue

Related Stylistic Element Data:

DecTech	Color	Sty. Element	Motif
Painted, under free hand	Purple-Blue, Muted Dark	Botanical Band 55	Individual A

Botanical Band 56



Composed of a central four-petal flower with a single stem that has multiple buds off it, extending in both directions.

Stylistic Genre: The genre for this stylistic element depends on a combination of decorative technique, color, and element.

Stylistic Genre: Handpainted Blue

Related Stylistic Element Data:

DecTech	Color	Sty. Element	Motif
Painted, under free hand	Purple-Blue, Muted Dark	Botanical Band 56	Individual A

Botanical Band 57



Repeating half-circle “waves” composed of floral and botanical elements extend from a regularly placed vertical flower that sits on a double band.

Stylistic Genre: The genre for this stylistic element depends on a combination of decorative technique, color, and element.

Stylistic Genre: Handpainted Blue

Related Stylistic Element Data:

DecTech	Color	Sty. Element	Motif
Painted, under free hand	Purple-Blue, Muted Dark	Botanical Band 57	Individual A

Botanical Band 58



Similar to Botanical Band 55: Zigzag pattern of ovals or leaf-like objects with “triangles” composed of three shapes between them. Similar to Botanical Band 19 but the “triangles” in that band are a single shape. This band has the addition of a background of closely-spaced, parallel vertical lines.

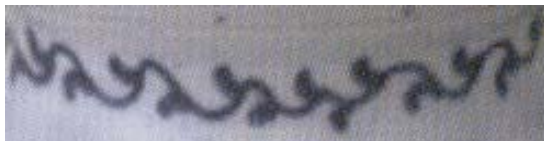
Stylistic Genre: The genre for this stylistic element depends on a combination of decorative technique, color, and element.

Stylistic Genre: Handpainted Blue

Related Stylistic Element Data:

DecTech	Color	Sty. Element	Motif
Painted, under free hand	Purple-Blue, Muted Dark	Botanical Band 58	Individual A

Botanical Band 59



A continuous wavy band of connected leaf elements.

Stylistic Genre: The genre for this stylistic element depends on a combination of decorative technique, color, and element.

Stylistic Genre: Handpainted Blue

Related Stylistic Element Data:

DecTech	Color	Sty. Element	Motif
Painted, under free hand	Purple-Blue, Muted Dark	Botanical Band 59	Individual A

Botanical Band 60



Botanical Band 60 is characterized by a central line, with pairs of heart-shaped/ivy leaves and short diagonal lines with small berry-like dots emanating from it. Note that the plain band in the image is not part of this stylistic element.

Stylistic Genre: The genre for this stylistic element depends on a combination of decorative technique, color, and element.

Stylistic Genre: Polychrome, warm

Related Stylistic Element Data:

DecTech	Color	Sty. Element	Motif
Painted, under free hand	Yellow, Muted Dark	Botanical Band 60	Individual A
Painted, under free hand	Yellow, Muted Dark	Plain Band 01	Individual B

Botanical Band 61



A chevron-like band with leaves and berries impressed into the clay characterizes Botanical Band 61. The leaves radiate from a center dot, or “berry,” which are all connected via a centerline that encircles the entire vessel.

Stylistic Genre: The genre for this stylistic element depends on a combination of decorative technique, color, and element.

Stylistic Genre: Not Applicable

Related Stylistic Element Data:

DecTech	Color	Sty. Element	Motif
Rouletted	No Applied Color	Botanical Band 61	Individual A

Botanical Band, unid

Use this when you have a small portion of a botanical band, but cannot identify the specific band.

Stylistic Genre: The genre for this stylistic element depends on a combination of decorative technique, color, and element.

Botanical, composite



Botanical, composite is used to describe any element that consists of flowers, leaves, stems, and buds, which can be a part of a single, connected element. This may be a large central floral scene or it may simply be a large fragment of a botanical element that includes many different botanical images.

Stylistic Genre: The genre for this stylistic element depends on a combination of decorative technique, color, and element.

Stylistic Genre: Polychrome, warm

Related Stylistic Element Data:

DecTech	Color	Sty. Element	Motif
Painted, under free hand	Yellow, Intense Medium	Botanical, composite	Individual A

Botanical, sprig



Use Botanical, sprig to capture any botanical or floral sprigs seen on a sherd. A sprig is defined as a small spray, twig, or shoot of a plant. It can consist of flowers and leaves or an abstract version. This example consists of buds, leaves, and a twig-like extension.

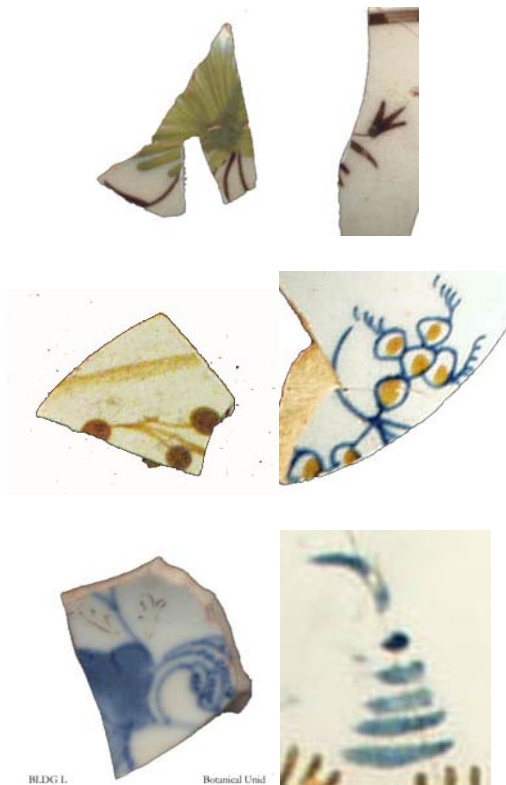
Stylistic Genre: The genre for this stylistic element depends on a combination of decorative technique, color, and element.

Stylistic Genre: Handpainted Blue

Related Stylistic Element Data:

DecTech	Color	Sty. Element	Motif
Painted, under free hand	Purple-Blue, Intense Dark	Botanical, sprig	Individual A

Botanical, unidentified



This classification should be used when small, unidentifiable portions of a botanical element are present on a sherd. It is often the case that one can identify the decoration as having botanical elements but cannot specify what types of botanical elements are there (could be anything from a large composite arrangement to a band or garland). Use this as a very general category.

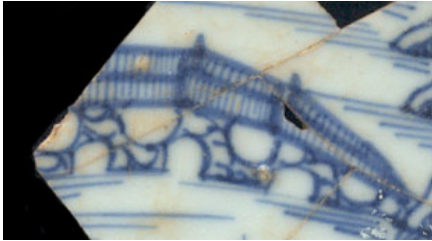
Stylistic Genre: The genre for this stylistic element depends on a combination of decorative technique, color, and element.

Stylistic Genre: Polychrome, warm

Related Stylistic Element Data:

DecTech	Color	Sty. Element	Motif
Painted, under free hand	Purple-Blue, Intense Dark	Botanical, unidentified	Individual A
Painted, under free hand	Yellow, Intense Light	Botanical, unidentified	Individual A

Bridge



A bridge is any element that spans a body of water.

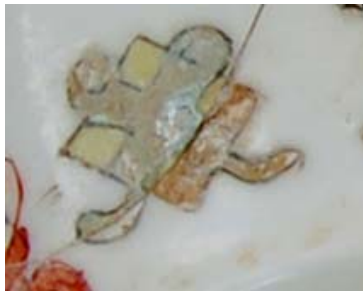
Stylistic Genre: The genre for this stylistic element depends on a combination of decorative technique, color, and element.

Stylistic Genre: Handpainted Blue

Related Stylistic Element Data:

DecTech	Color	Sty. Element	Motif
Painted, under free hand	Purple-Blue, Intense Dark	Bridge	Individual A

Buddhist Symbol



Inclusive term for abstract symbols represented in Buddhist traditions. These symbols are often accented by a ribbon. In this case, the ribbon is considered an essential part of the element and is not recorded separately. Example on these sherds are part of the “Eight Precious Objects” or *babao*, within Hundred Antiquities pattern.

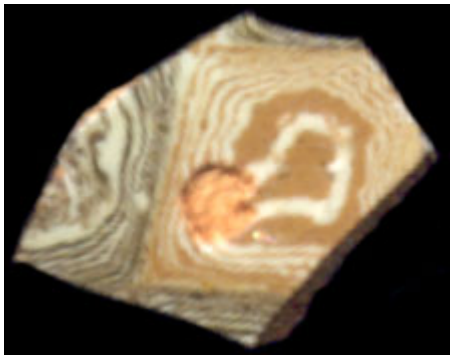
Stylistic Genre: The genre for this stylistic element depends on a combination of decorative technique, color, and element.

Stylistic Genre: Overglaze, handpainted

Related Stylistic Element Data:

DecTech	Color	Sty. Element	Motif
Painted, over free hand	Yellow, Muted Light	Buddhist Symbol	Individual A
Painted, over free hand	Neutrals Dark	Buddhist Symbol	Individual A
Painted, over free hand	Gilt	Buddhist Symbol	Individual A

Bull's Eye



Decoration consisting of concentric circles of alternating colored clay.

Stylistic Genre: Slipware, factory made

Stylistic Genre: Slipware, factory made

Related Stylistic Element Data:

DecTech	Color	Sty. Element	Motif
Bull's Eye Inlay	Yellow, Muted Dark	Bull's Eye	Individual A
Bull's Eye Inlay	Yellow-Red, Muted Medium	Bull's Eye	Individual A

Butterfly



A butterfly element can be a realistic representation of a butterfly (bottom left) or more abstract (top left). The defining characteristics include antennae and multi-lobed wings that can alternate between being filled with color and highlighted with dashes or stripes.

Stylistic Genre: The genre for this stylistic element depends on a combination of decorative technique, color, and element.

Stylistic Genre: Handpainted Blue

Related Stylistic Element Data:

DecTech	Color	Sty. Element	Motif
Painted, under free hand	Purple-Blue, Intense Dark	Butterfly	Adjacent/ Stacked Combo A

Cable Band 02



Cable Band 2 is painted to look like a rope or cable. The central horizontal section is a solid color with unpainted sections that create the illusion of another fiber or rope wrapping around the solid band. Inside the solid band, between the lozenge shaped unpainted portions, are small vertical “dumbbells” and leaves.

Stylistic Genre: The genre for this stylistic element depends on a combination of decorative technique, color, and element.

Stylistic Genre: Overglaze, hand painted

Related Stylistic Element Data:

DecTech	Color	Sty. Element	Motif
Painted, over free hand	Neutrals, Dark	Cable Band 02	Individual A
Painted, over free hand	Gilt	Cable Band 02	Individual A

Cable Band 03



This molded band is often seen on refined wares like Creamware. It is characterized by repeated, thin molded diagonal lines.

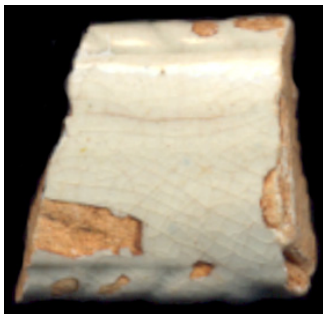
Stylistic Genre: Molded Edge Decoration, other

Stylistic Genre: Molded Edge Decoration, other

Related Stylistic Element Data:

DecTech	Color	Sty. Element	Motif
Molded	No Applied Color	Cable Band 03	Individual A

Cable Band 04



A decoration consisting of molded, inset lines that resemble a twisted rope running along the sides of the handle.

Stylistic Genre: Molded Edge Decoration, other

Stylistic Genre: Molded Edge Decoration, other

Related Stylistic Element Data:

DecTech	Color	Sty. Element	Motif
Molded	No Applied Color	Cable Band 04	Individual A

Cable Band 05



Multiple molded beads that lie at an angle adjacent to one another, resembling a cable or rope.

Stylistic Genre: None (leave field blank)

Stylistic Genre: None (leave field blank)

Related Stylistic Element Data:

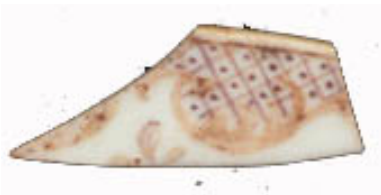
DecTech	Color	Sty. Element	Motif
Molded	No Applied Color	Cable Band 05	Individual A

Cartouche 01



Cartouche 01 is a scroll or curled circle that contains further decoration and often serves as a “separating” element between bands—it may be solid with a flower or it could contain an intricate painted scene or crest. Two examples of Cartouche 01 and how they should be cataloged are presented here.

Stylistic Genre: The genre for this stylistic element depends on a combination of decorative technique, color, and element.



Stylistic Genre: Hand painted Blue

Related Stylistic Element Data:

DecTech	Color	Sty. Element	Motif
Painted, under free hand	Purple-Blue, Intense Dark	Cartouche 01	Adjacent Combination A
Painted, under free hand	Purple-Blue, Intense Dark	Floral, radiating bloom 01	Adjacent Combination A

Stylistic Genre: Overglaze, hand painted

Related Stylistic Element Data:

DecTech	Color	Sty. Element	Motif
Painted, over free hand	Red, Muted Medium	Cartouche 01	Adjacent Combination A
Painted, over free hand	Red, Muted Dark	Diaper/1 Dot	Adjacent Combination A

Cartouche 02



Cartouche 02 is a set of curved vertical lines similar to parentheses that may or may not contain another element such as a flower or fish roe.

Stylistic Genre: The genre for this stylistic element depends on a combination of decorative technique, color, and element.

Stylistic Genre: Overglaze, hand painted

Related Stylistic Element Data:

DecTech	Color	Sty. Element	Motif
Painted, under free hand	Purple-Blue, Intense Dark	Cartouche 02	Adjacent Combination A
Painted, over free hand	Red, Intense Medium	Floral, radiating bloom 02	Adjacent Combination A

Cat's Eye, single



A slipped element that consists of a multi-colored dot formed with two or more different slips dropped by a slip cup.

Stylistic Genre: Slipware, factory made

Stylistic Genre: Slipware, factory made

Related Stylistic Element Data:

DecTech	Color	Sty. Element	Motif
Slip	Purple-Blue, Muted Medium	Cat's Eye, single	Individual A, repeated
Slip	Neutrals, Light	Cat's Eye, single	Individual A, repeated
Slip	Yellow-Red, Muted Dark	Cat's Eye, single	Individual A, repeated

Cat's Eye, combed



A modified version of Cat's Eye whereby the slipped, multicolored dot (Cat's Eye) is also combed, altering its appearance.

Stylistic Genre: Slipware, factory made

Stylistic Genre: Slipware, factory made

Related Stylistic Element Data:

DecTech	Color	Sty. Element	Motif
Slip	Blue, Muted Medium	Cat's Eye, combed	Individual A, repeated
Slip	Neutrals, Light	Cat's Eye, combed	Individual A, repeated
Slip	Yellow-Red, Muted Dark	Cat's Eye, combed	Individual A, repeated

Chain Band 01



A chain of connected ovals with a dot inside each one.

Stylistic Genre: The genre for this stylistic element depends on a combination of decorative technique, color, and element.

Stylistic Genre: Handpainted Blue

Related Stylistic Element Data:

DecTech	Color	Sty. Element	Motif
Painted, under free hand	Purple-Blue, Intense Dark	Chain Band 01	Individual A

Chain Band 02



A band of connected circles/ovals, floating freely interrupted by a radial bloom intermittently. In this example, the circles are irregular in shape.

Stylistic Genre: Handpainted Blue

Stylistic Genre: Handpainted Blue

Related Stylistic Element Data:

DecTech	Color	Sty. Element	Motif
Painted, under free hand	Blue, Muted Dark	Chain Band 02	Individual A

Chain Band 03



A band of connected circles or ovals that overlap, resembling chain link.

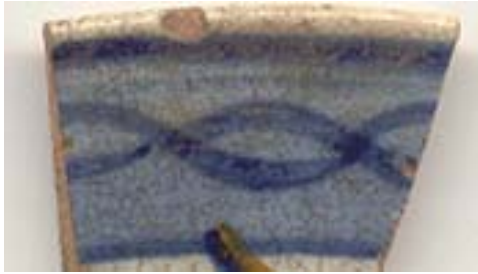
Stylistic Genre: Handpainted Blue

Stylistic Genre: Handpainted Blue

Related Stylistic Element Data:

DecTech	Color	Sty. Element	Motif
Painted, under free hand	Blue, Muted Dark	Chain Band 03	Individual A

Chain Band 04



A simple band composed of interlocking ovals between two simple bands. It can either have a painted background as seen in this example, or it can have no background. Similar to Chain Band 06, except the links of Chain Band 06 are not completely closed.

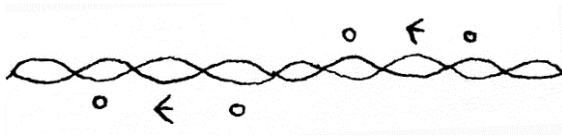
Stylistic Genre: The genre for this stylistic element depends on a combination of decorative technique, color, and element.

Stylistic Genre: Handpainted Blue

Related Stylistic Element Data:

DecTech	Color	Sty. Element	Motif
Painted, under free hand	Purple-Blue, Intense Dark	Chain Band 04	Individual A

Chain Band 05



A band of connected ovals or circles. Intermittent clusters comprised of a three-prong “flower” flanked by small open circles are placed at either side of the chain at regular intervals.

Stylistic Genre: The genre for this stylistic element depends on a combination of decorative technique, color, and element.

Stylistic Genre: Overglaze, hand painted

Related Stylistic Element Data:

DecTech	Color	Sty. Element	Motif
Painted, over free hand	Unidentifiable	Chain Band 05	Individual A

Chain Band 06



A chain of connected oblong open circles (unlike Chain Band 04, where the circles are closed). This band can either be flanked by plain bands or not.

Stylistic Genre: The genre for this stylistic element depends on a combination of decorative technique, color, and element.

Stylistic Genre: Overglaze, hand painted

Related Stylistic Element Data:

DecTech	Color	Sty. Element	Motif
Painted, over free hand	Yellow-Red, Muted Medium	Chain Band 06	Individual A

Chain Band 07



Chain Band 07 is the same as Chain Band 08 except that it is not bound between two lines. Two intertwined lines that form a fluid diamond and oval pattern characterize this band.

Stylistic Genre: The genre for this stylistic element depends on a combination of decorative technique, color, and element.

Stylistic Genre: Handpainted Blue

Related Stylistic Element Data:

DecTech	Color	Sty. Element	Motif
Painted, under free hand	Purple-Blue, Intense Dark	Chain Band 07	Individual A

Chain Band 08



This band is characterized by two intertwined lines that form a fluid diamond and oval pattern. Chain Band 08 is the same as Chain Band 07 except that painted two solid lines bound it.

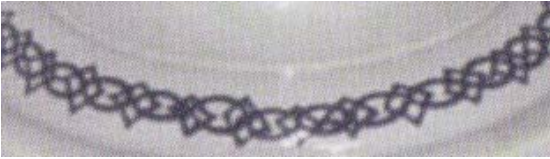
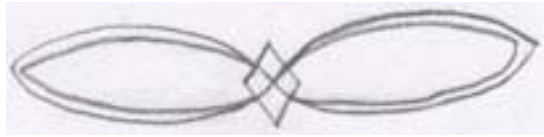
Stylistic Genre: The genre for this stylistic element depends on a combination of decorative technique, color, and element.

Stylistic Genre: Handpainted Blue

Related Stylistic Element Data:

DecTech	Color	Sty. Element	Motif
Painted, under free hand	Purple-Blue, Intense Dark	Chain Band 08	Individual A

Chain Band 09



This band is comprised of a series of horizontally oriented ovals, with a diamond at each oval intersection.

Stylistic Genre: The genre for this stylistic element depends on a combination of decorative technique, color, and element.

Stylistic Genre: Overglaze, handpainted

Related Stylistic Element Data:

DecTech	Color	Sty. Element	Motif
Painted, over free hand	Unidentified	Chain Band 09	Individual A

Stylistic Genre: Handpainted Blue

Related Stylistic Element Data:

DecTech	Color	Sty. Element	Motif
Painted, under free hand	Purple-Blue, Intense Dark	Chain Band 09	Individual A

Chain Band 10



A band consisting of connected open circles. An outlined “X” (no fill) appears in the center of each circle.

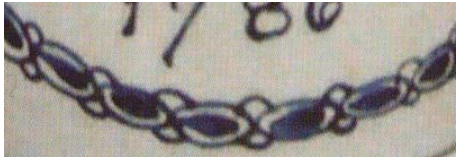
Stylistic Genre: The genre for this stylistic element depends on a combination of decorative technique, color, and element.

Stylistic Genre: Handpainted Blue

Related Stylistic Element Data:

DecTech	Color	Sty. Element	Motif
Painted, under free hand	Purple-Blue, Muted Dark	Chain Band 10	Individual A

Chain Band 11



A single row of connected ovals composed of filled ovals within them. Two small ovals or circles are placed at the junction of each oval.

Stylistic Genre: The genre for this stylistic element depends on a combination of decorative technique, color, and element.

Stylistic Genre: Handpainted Blue

Related Stylistic Element Data:

DecTech	Color	Sty. Element	Motif
Painted, under free hand	Purple-Blue, Intense Dark	Chain Band 11	Individual A
Painted, under free hand	Purple-Blue, Intense Dark	Lettering	Individual B

Chain Band 12



Like Chain Band 03, this is a band of overlapping/connected circles; however, in this band, portions of the circles are painted, as in example shown.

Stylistic Genre: The genre for this stylistic element depends on a combination of decorative technique, color, and element.

Stylistic Genre: blue, molded/stamped/incised

Related Stylistic Element Data:

DecTech	Color	Sty. Element	Motif
Painted, under free hand	Purple-Blue, Intense Dark	Chain Band 12	Individual A
Incised, free hand	Not Applicable	Chain Band 12	Individual A

Chain Band 13



Band consists of larger oval links attached with smaller oval links in between. The names of each of the fifteen states are painted inside the larger links.

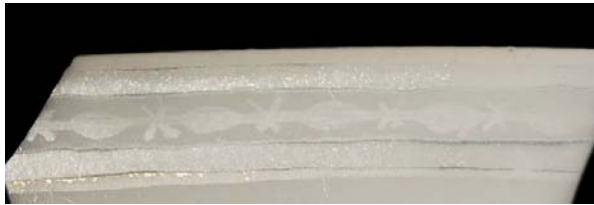
Stylistic Genre: The genre for this stylistic element depends on a combination of decorative technique, color, and element.

Stylistic Genre: Overglaze, handpainted

Related Stylistic Element Data:

DecTech	Color	Sty. Element	Motif
Painted, over free hand	Neutrals, Dark	Chain Band 13	Individual A
Painted, over free hand	Green, Intense Dark	Chain Band 13	Individual A
Painted, over free hand	Gilt	Chain Band 13	Individual A

Chain Band 14



Band is defined by alternating ovals and X's with horizontal lines through the middle so that the X's and ovals appear to be attached. May or may not be bound by plain bands.

Stylistic Genre: The genre for this stylistic element depends on a combination of decorative technique, color, and element.

Stylistic Genre: Overglaze, handpainted

Related Stylistic Element Data:

DecTech	Color	Sty. Element	Motif
Painted, over free hand	Unidentified	Chain Band 14	Individual A

Checkerboard Band, unid

Use this when you have a small portion of a checkerboard band, but cannot identify the specific band.

Stylistic Genre: The genre for this stylistic element depends on a combination of decorative technique, color, and element.

Checkerboard Dot



This element is characterized by a checkerboard pattern that has a dot in the center of each square. This example of Checkerboard Dot is sponged.

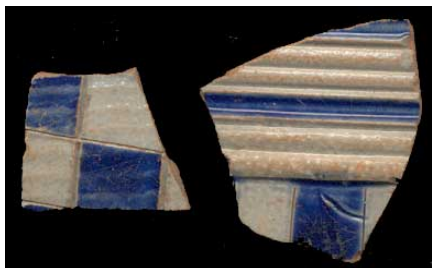
Stylistic Genre: The genre for this stylistic element depends on a combination of decorative technique, color, and element

Stylistic Genre: Sponge/Spatter

Related Stylistic Element Data:

DecTech	Color	Sty. Element	Motif
Sponge	Purple-Blue, Intense Dark	Checkerboard Dot	Individual A

Checkerboard/Diamonds



Decoration most often seen on Westerwald vessels. This element covers both the standard square checkerboard as well as squares oriented on their corners, i.e. diamonds.

Stylistic Genre: The genre for this stylistic element depends on a combination of decorative technique, color, and element.

Stylistic Genre: Blue, molded/stamped/incised

Related Stylistic Element Data:

DecTech	Color	Sty. Element	Motif
Incised, free hand	No Applied Color	Checkerboard /Diamonds	Individual A
Painted, under free hand	Purple-Blue, Intense Dark	Checkerboard /Diamonds	Individual A

Child



Any element showing a human child.

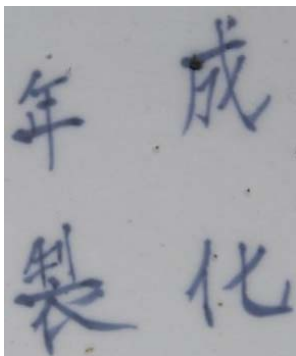
Stylistic Genre: The genre for this stylistic element depends on a combination of decorative technique, color, and element.

Stylistic Genre: None (leave field blank)

Related Stylistic Element Data:

DecTech	Color	Sty. Element	Motif
Sprig Molded	No Applied Color	Child	Individual A

Chinese Characters



Any depiction of Chinese lettering that is not a maker's mark.

Stylistic Genre: The genre for this stylistic element depends on a combination of decorative technique, color, and element.

Stylistic Genre: Handpainted Blue

Related Stylistic Element Data:

DecTech	Color	Sty. Element	Motif
Painted, under free hand	Purple-Blue, Intense Dark	Chinese Characters	Individual A

Church, Christian



Any element depicting a Christian church.

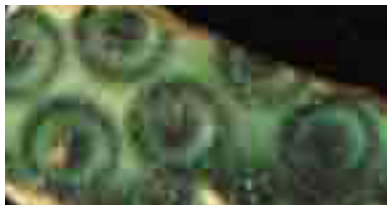
Stylistic Genre: The genre for this stylistic element depends on a combination of decorative technique, color, and element.

Stylistic Genre: Overglaze, hand painted

Related Stylistic Element Data:

DecTech	Color	Sty. Element	Motif
Painted, over free hand	Unidentifiable	Church, Christian	Scene Combination A
Painted, over free hand	Unidentifiable	Structure, unid.	Scene Combination A
Painted, over free hand	Unidentifiable	Boat	Scene Combination A
Painted, over free hand	Unidentifiable	Man	Scene Combination A
Painted, over free hand	Unidentifiable	Landscape/Hills	Scene Combination A
Painted, over free hand	Unidentifiable	Botanical, unidentified	Scene Combination A
Painted, over free hand	Unidentifiable	Water, body of	Scene Combination A

Circle 01



Molded “bull’s eye” circles. Seen here on Wedgwood green.

Stylistic Genre: None (leave field blank)

Stylistic Genre: None (leave field blank)

Related Stylistic Element Data:

DecTech	Color	Sty. Element	Motif
Molded	No Applied Color	Circle 01	Individual A

Circle Band 01



Circle Band 1 is an inlaid slip band that consists of large connected circles that have a smaller, dark central circle. This band initially cuts into the slipped vessel with a roulette tool. It is then slipped again with a different color and that slip is cut away. We record the final decorative treatment, which results in inlaid slip.

Stylistic Genre: Slipware, factory made

Stylistic Genre: Slipware, factory made

Related Stylistic Element Data:

DecTech	Color	Sty. Element	Motif
Slip, inlaid	Yellow-Red, Muted Medium	Circle Band 01	Individual A
Slip, inlaid	Neutrals, Dark	Circle Band 01	Individual A

Circle Band 02



Circle Band 2 is an inlaid slip band or bands of small, uniform circles or ovals. Though these are closely spaced, they are not connected.

Stylistic Genre: Slipware, factory made

Stylistic Genre: Slipware, factory made

Related Stylistic Element Data:

DecTech	Color	Sty. Element	Motif
Slip, inlaid	Yellow-Red, Muted Dark	Circle Band 02	Stacked Combination A
Slip, lathe/engine turned	Yellow-Red, Intense Medium	Plain Band 01	Stacked Combination A

Circle Band 03



Circle Band 3 consists of a band of connected open circles bound by a plain band above and below it. A horizontal dash band runs along the circle centers and two vertical “ticks” are placed at the center of each circle creating a dashed cross appearance inside each circle.

Stylistic Genre: The genre for this stylistic element depends on a combination of decorative technique, color, and element.

Stylistic Genre: Handpainted Blue

Related Stylistic Element Data:

DecTech	Color	Sty. Element	Motif
Painted, under free hand	Blue, Muted Medium	Circle Band 03	Individual A

Circle Band 04



A band of open circles alternating with dots.

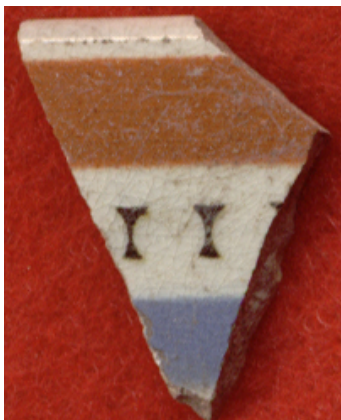
Stylistic Genre: The genre for this stylistic element depends on a combination of decorative technique, color, and element.

Stylistic Genre: Overglaze, hand painted

Related Stylistic Element Data:

DecTech	Color	Sty. Element	Motif
Painted, over free hand	Unidentifiable	Circle Band 04	Individual A

Circle Band 06



A band of hourglass-shaped “dividers” creating a negative effect of circles in the white space between them.

Stylistic Genre: Slipware, factory made

Stylistic Genre: Slipware, factory made

Related Stylistic Element Data:

DecTech	Color	Sty. Element	Motif
Slip, lathe/engine turned	Yellow-Red, Intense Medium	Plain Band 02	Stacked Combination A
Slip, lathe/engine turned	Blue, Muted Medium	Plain Band 02	Stacked Combination A
Slip, lathe/engine turned	Yellow-Red/Red, Muted Dark	Circle Band 06	Stacked Combination A

Circle Band 07



Series of flower-like circles with two elements (examples of elements include half-circles or pointed elements) on the top and bottom of each circle. The area surrounding the circles may or may not be filled in with color. Shown here as a rouletted, painted band.

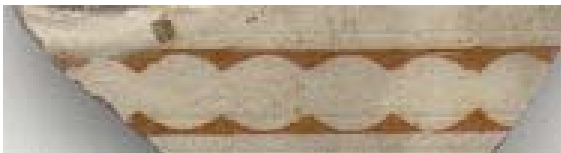
Stylistic Genre: The genre for this stylistic element depends on a combination of decorative technique, color, and element.

Stylistic Genre: Slipware, factory made

Related Stylistic Element Data:

DecTech	Color	Sty. Element	Motif
Rouletted	Not Applicable	Circle Band 07	Individual A
Painted, under, lathe/engine turned	Green, Intense Medium	Circle Band 07	Individual A

Circle Band 09



An inlaid slip band that consists of large connected circles. This band initially cuts into the slipped vessel with a roulette tool. It is then slipped again with a different color and that slip is cut away. We record the final decorative treatment, which results in inlaid slip. Note: Different from Circle Band 01 only in that Circle Band 09 lacks the complete inner circles.

Stylistic Genre: Slipware, factory made

Stylistic Genre: Slipware, factory made

Related Stylistic Element Data:

DecTech	Color	Sty. Element	Motif
Slip, inlaid	Yellow-Red, Intense Medium	Circle Band 09	Individual A

Circle Band 10



This band is similar to Circle Band 07. The central element is a band of connected circles with smaller circles inside them. A band of offset half-circles is attached to the top and bottom of the central band, forming the illusion of a scallop band above and below it. The example is rouletted.

Stylistic Genre: Slipware, factory made

Stylistic Genre: Slipware, factory made

Related Stylistic Element Data:

DecTech	Color	Sty. Element	Motif
Rouletted	Not Applicable	Circle Band 10	Stacked combination A
Painted, under engine-turned	Green, Intense Medium	Circle Band 10	Stacked combination A
Slip, lathe/engine turned	Yellow-Red, Muted Dark	Plain Band 01	Stacked combination A

Circle Band 11



A band of connected circles that are open at the bottom. A single “V” is painted in the center of each circle, with the exception of a blank circle at a regular interval.

Stylistic Genre: Handpainted Blue

Stylistic Genre: Handpainted Blue

Related Stylistic Element Data:

DecTech	Color	Sty. Element	Motif
Painted, under free hand	Blue, Muted Dark	Circle Band 11	Individual A

Circle Band 13



A single band of circles, unconnected, suspended from a band above.

Stylistic Genre: Handpainted Blue

Stylistic Genre: Handpainted Blue

Related Stylistic Element Data:

DecTech	Color	Sty. Element	Motif
Painted, under free hand	Blue, Muted Dark	Circle Band 13	Individual A

Circle Band 15



A band of parallel arcs with a pair of interior square dots and single exterior vertical ticks where the arcs come closest to touching.

Stylistic Genre: Slipware, factory made

Stylistic Genre: Slipware, factory made

Related Stylistic Element Data:

DecTech	Color	Sty. Element	Motif
Slip, inlaid	Neutrals, Dark	Circle Band 15	Individual A

Circle Band 16



This band is a chain of large ovals. Each oval has a small cluster of four dots in the center. Three thin lines are also painted between each oval.

Stylistic Genre: The genre for this stylistic element depends on a combination of decorative technique, color, and element.

Stylistic Genre: Handpainted Blue

Related Stylistic Element Data:

DecTech	Color	Sty. Element	Motif
Painted, under free hand	Purple-Blue, Intense Dark	Circle Band 16	Individual A

Circle Band 17



The decorative arts term for this element is a guilloche (shown here on Black Basalt). A band composed of two or more elements twisted/wound together horizontally, resulting in circular openings that are often filled with “ornaments,” in this case botanical elements.

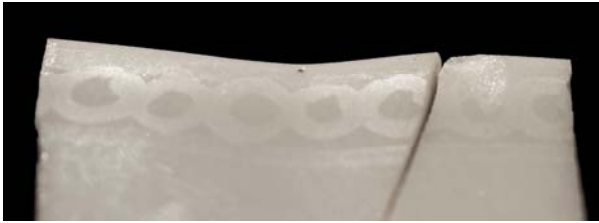
Stylistic Genre: The genre for this stylistic element depends on a combination of decorative technique, color, and element.

Stylistic Genre: None (leave field blank)

Related Stylistic Element Data:

DecTech	Color	Sty. Element	Motif
Sprig Molded	No Applied Color	Circle Band 17	Individual A

Circle Band 18



A single band of connected, closed circles. It can be bound by a plain band either above or below it.

Stylistic Genre: The genre for this stylistic element depends on a combination of decorative technique, color, and element.

Stylistic Genre: Overglaze, handpainted

Related Stylistic Element Data:

DecTech	Color	Sty. Element	Motif
Painted, over free hand	Unidentifiable	Circle Band 18	Individual A

Circle, open



This is a painted circle with no fill.

Stylistic Genre: The genre for this stylistic element depends on a combination of decorative technique, color, and element.

Stylistic Genre: Handpainted Blue

Related Stylistic Element Data:

DecTech	Color	Sty. Element	Motif
Painted, under free hand	Purple-Blue, Intense Dark	Circle, open	Individual, A

Cloud Band 01



Cloud Band 1 is characterized by a scalloped band extending from another band. This scalloped area also contains diagonal hatching. This band is not identified as a scallop band because in the literature of Canton decorated Chinese porcelain, this band element is always known as a cloud element.

Stylistic Genre: Canton

Stylistic Genre: Handpainted Blue
Pattern Name: Canton

Related Stylistic Element Data:

DecTech	Color	Sty. Element	Motif
Painted, under free hand	Purple-Blue, Intense Dark	Trellis Band 02	Stacked Combination A
Painted, under free hand	Purple-Blue, Intense Dark	Cloud Band 01	Stacked Combination A

Cloud Band 02



Cloud Band 02 is a rather irregular solid band of color that undulates and resembles a cloud. This band is always one color.

Stylistic Genre: The genre for this stylistic element depends on a combination of decorative technique, color, and element.

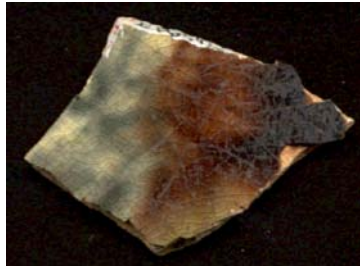
Stylistic Genre: Handpainted Blue

Pattern Name: Canton

Related Stylistic Element Data:

DecTech	Color	Sty. Element	Motif
Painted, under free hand	Purple-Blue, Intense Dark	Cloud Band 02	Individual A

Clouded



“Clouded” decoration consists of a clear lead-fluxed glaze with spots of transparent color added, such as green, yellow, blue, gray, or brown. This is similar to “Tortoiseshell” decoration, which consists of a brown speckling under a clear lead-fluxed glaze.

Stylistic Genre: None (leave field blank)

Stylistic Genre: None (leave field blank)

Related Stylistic Element Data:

DecTech	Color	Sty. Element	Motif
Applied Powder/ Crystals	Yellow-Red, Muted Dark	Clouded	Individual A
Applied Powder/ Crystals	Green, Muted Medium	Clouded	Individual A

Coin



This element is any representation of a coin, often seen on Chinese Porcelain. Do not use for unidentified circular symbols. See also “Medallion, unid.” or “Floral medallion.”

Stylistic Genre: The genre for this stylistic element depends on a combination of decorative technique, color, and element.

Stylistic Genre: Imari
Pattern Name: Crab and Coin

Related Stylistic Element Data:

DecTech	Color	Sty. Element	Motif
Painted, over free hand	Gilt	Coin	Individual A
Painted, over free hand	Red, Intense Medium	Coin	Individual A
Painted, under free hand	Purple-Blue, Muted Dark	Coin	Individual A

Columns



This element is any representation of architectural columns. The example on Black Basalt has the columns alternating with acanthus leaves. This element is often seen on other refined stonewares as well.

Stylistic Genre: The genre for this stylistic element depends on a combination of decorative technique, color, and element.

Stylistic Genre: None (leave field blank)

Related Stylistic Element Data:

DecTech	Color	Sty. Element	Motif
Sprig molded	No Applied Color	Columns	Individual A
Sprig molded	No Applied Color	Acanthus Leaves	Individual A



Combed



Slip-based decoration in which “two or more colored slips are laid down” on a vessel. Then “a tool is used to move the slips through one another physically in order to create patterns after they are initially laid down” (Erickson and Hunter. “Dots, Dashes, and Squiggles: Early English Slipware Technology.” Ceramics in America 2001, ed. Robert Hunter, p. 107).

Note that only the color that is trailed onto the vessel is recorded in the Decorative Technique table. The white/yellow slip would be recorded in the Ceramic Interior Color field and the brown combed slip is recorded in the decorative technique table as shown on the right.

Stylistic Genre: None (leave field blank)

Stylistic Genre: Combed/Dot/Marbleized/Trailed

Related Stylistic Element Data:

DecTech	Color	Sty. Element	Motif
Slip	Yellow-Red, Muted Dark	Combed	Individual A

Common Cable



A slipped element that consists of a connected “chain” of dots, each formed with two or more different slips dropped by a slip cup.

Stylistic Genre: Slipware, factory made

Stylistic Genre: Slipware, factory made

Related Stylistic Element Data:

DecTech	Color	Sty. Element	Motif
Slip	Purple-Blue, Muted Medium	Common Cable	Individual A
Slip	Neutrals, Light	Common Cable	Individual A
Slip	Red/Yellow-Red, Muted Dark	Common Cable	Individual A

Cordoned



One or more incised or molded straight bands encircling a vessel.

Stylistic Genre: The genre for this stylistic element depends on a combination of decorative technique, color, and element.

Stylistic Genre: None (leave field blank)

Related Stylistic Element Data:

DecTech	Color	Sty. Element	Motif
Incised, lathe/engine turned	No Applied Color	Cordoned	Individual A, Repeated

Stylistic Genre: None (leave field blank)

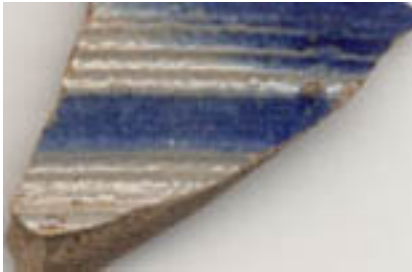
Related Stylistic Element Data:

DecTech	Color	Sty. Element	Motif
Molded	No Applied Color	Cordoned	Individual A

Stylistic Genre: None (leave field blank)

Related Stylistic Element Data:

DecTech	Color	Sty. Element	Motif
Incised, lathe/engine turned	No Applied Color	Cordoned	Individual A, Repeated



Stylistic Genre: Blue, molded/stamped/incised

Related Stylistic Element Data:

DecTech	Color	Sty. Element	Motif
Incised, lathe/engine turned	Not Applicable	Cordoned	Individual A, Repeated
Painted, under lathe/engine turned	Purple-Blue, Intense Dark	Cordoned	Individual A, Repeated

Stylistic Genre: Blue, molded/stamped/incised

Related Stylistic Element Data:

DecTech	Color	Sty. Element	Motif
Incised, lathe/engine turned	Not Applicable	Cordoned	Individual A, Repeated
Painted, under lathe/engine turned	Purple-Blue, Intense Dark	Cordoned	Individual A, Repeated
Incised, lathe/engine turned	No Applied Color	Cordoned	Individual A, Repeated

Crab



This element is any representation of a terrestrial or marine crab.

Stylistic Genre: The genre for this stylistic element depends on a combination of decorative technique, color, and element.

Stylistic Genre: Imari
Pattern Name: Crab and Coin

Related Stylistic Element Data:

DecTech	Color	Sty. Element	Motif
Painted, over free hand	Gilt	Crab	Individual A
Painted, over free hand	Red, Intense Medium	Crab	Individual A

Crab Stock



Handles molded to look like crab legs.

Stylistic Genre: None (leave field blank)

Stylistic Genre: None (leave field blank)

Related Stylistic Element Data:

DecTech	Color	Sty. Element	Motif
Molded	No Applied Color	Crab Stock	Individual A

Crenelated Edge



Notches or indentations along the rim of a vessel. It looks like someone took a small, round stick (pencil-like tool) and repeatedly impressed the edge of the vessel.

Stylistic Genre: None (leave field blank)

Stylistic Genre: None (leave field blank)

Related Stylistic Element Data:

DecTech	Color	Sty. Element	Motif
Impressed	No Applied Color	Crenelated Edge	Individual A