

DAACS Stylistic Element Glossary

R-S

by Beatrix Arendt, Lynsey Bates, Leslie Cooper, Jillian Galle,
Elizabeth Sawyer, Jesse Sawyer, and Karen Smith





Last Updated October 2018

Radiating Lines.....	6
Ribbed	6
Ribbed, three lines.....	7
Ribbon.....	7
Roulette Band 03.....	8
Roulette Band 06.....	8
Roulette Band 07.....	9
Roulette Band 08.....	9
Roulette Band 10.....	10
Roulette Band 11.....	10
Roulette Band 12.....	10
Roulette Band 15.....	11
Roulette Band, unid.....	11
Royal Pattern 01.....	12
Sanskrit	12
Scales 01.....	13
Scales 02.....	13
Scallop Band 01.....	14
Scallop Band 02.....	14
Scallop Band 03.....	15
Scallop Band 04.....	15
Scallop Band 05.....	16
Scallop Band 06.....	16
Scallop Band 09.....	17
Scallop Band 12.....	17
Scallop Band 13.....	18
Scallop Band 14.....	18
Scallop Band 16.....	19
Scallop Band 17.....	19
Scallop Band 19.....	20
Scalloped Edge.....	21
Scalloped Edge 01, slanted	21
Scalloped Edge 01, straight.....	22
Scalloped Edge 02, straight.....	22
Scalloped Edge 03, straight.....	22
Scalloped Edge, spiked.....	23

Scalloped Edge, unid.....	23
Scribble Pattern.....	24
Scroll 01.....	24
Scroll Band 01.....	26
Scroll Band 02.....	26
Scroll Band 03.....	27
Scroll Band 04.....	27
Scroll Band 05.....	28
Scroll Band 06.....	28
Scroll Band 07.....	29
Scroll Band 08.....	29
Scroll Band, unid.....	29
Scroll, trellis.....	30
Setting Sun.....	30
Shading.....	30
Shell Edge 01.....	31
Shell Edge 02.....	31
Shell Edge 03.....	33
Shell Edge 04.....	33
Shell Edge 05.....	33
Shell Edge 06.....	34
Shell Edge 07.....	34
Shell Edge 08.....	35
Shell Edge 09.....	35
Shell Edge 10.....	36
Shell Edge 11.....	36
Shell Edge 12.....	38
Shell Edge 13.....	38
Shell Edge 14.....	38
Shell Edge 15.....	39
Shell Edge 16.....	39
Shell Edge 17.....	39
Shell Edge 18.....	41
Shell Edge 19.....	41
Shell Edge 20.....	42
Shell Edge 21.....	42
Shell Edge 22.....	43

Shell Edge 23	43
Shell Edge 24	43
Shell Edge 25	44
Shell Edge 26	44
Solid.....	44
Spearhead Band 01.....	45
Spearhead Band 02.....	45
Spearhead Band 03.....	46
Spearhead Band 04.....	46
Spearhead Band 05.....	46
Spearhead Band 06.....	47
Spearhead Band 07.....	47
Spearhead Band 08.....	48
Spearhead Band 09.....	48
Spearhead Band 10.....	49
Spearhead Band 11.....	49
Spearhead Band 12.....	50
Spearhead Band 13.....	50
Spearhead Band 14.....	50
Spearhead Band 15.....	51
Spearhead Band, unid.....	51
Squares.....	51
Squirrel.....	52
Star	52
Star Band 01.....	53
Star Band 02.....	53
Star Band 03.....	53
Stippled.....	54
Structure, unid.....	54
Swag Band 01.....	55
Swag Band 02.....	55
Swag Band 03.....	55
Swag Band 05.....	56
Swag Band 06.....	56
Swag Band 07.....	56
Swag Band 09.....	57
Swag Band 10.....	57

Swag Band 11.....	58
Swag Band 12.....	58
Swag Band 13.....	58
Swag Band 14.....	59
Swag Band 15.....	59
Swag Band 16.....	59
Swag Band 17.....	60
Swastika	60

Stylistic Element Name and Image	Characteristics	Cataloging Example for the Depicted Sherd								
<p data-bbox="191 126 428 164">Radiating Lines</p> 	<p data-bbox="606 99 1068 310">Radiating Lines is characterized by painted lines that radiate from a central point. In this example, Radiating Lines are painted on a lid finial, with the center point being the pointed top of the finial.</p> <p data-bbox="606 347 1073 488">Stylistic Genre: The genre for this stylistic element depends on a combination of decorative technique, color, and element.</p>	<p data-bbox="1331 131 1780 164">Stylistic Genre: Polychrome, warm</p> <p data-bbox="1341 204 1770 237">Related Stylistic Element Data:</p> <table border="1" data-bbox="1098 272 1919 383"> <thead> <tr> <th data-bbox="1098 272 1323 310">DecTech</th> <th data-bbox="1323 272 1514 310">Color</th> <th data-bbox="1514 272 1753 310">Sty. Element</th> <th data-bbox="1753 272 1919 310">Motif</th> </tr> </thead> <tbody> <tr> <td data-bbox="1098 310 1323 383">Painted, under free hand</td> <td data-bbox="1323 310 1514 383">Red, Muted Dark</td> <td data-bbox="1514 310 1753 383">Radiating Lines</td> <td data-bbox="1753 310 1919 383">Individual A</td> </tr> </tbody> </table>	DecTech	Color	Sty. Element	Motif	Painted, under free hand	Red, Muted Dark	Radiating Lines	Individual A
DecTech	Color	Sty. Element	Motif							
Painted, under free hand	Red, Muted Dark	Radiating Lines	Individual A							
<p data-bbox="264 558 369 591">Ribbed</p>    <p data-bbox="121 1333 302 1377">Molded groove on both sides of handle</p>	<p data-bbox="606 529 1031 699">A molded portion of a vessel that has long convex ridges. Note the difference between “flutes” and “ribs”: flutes are concave and ribs are convex.</p> <p data-bbox="606 740 1045 813">Stylistic Genre: None (leave field blank)</p>	<p data-bbox="1293 566 1818 599">Stylistic Genre: None (leave field blank)</p> <p data-bbox="1341 639 1770 672">Related Stylistic Element Data:</p> <table border="1" data-bbox="1098 708 1976 818"> <thead> <tr> <th data-bbox="1098 708 1318 745">DecTech</th> <th data-bbox="1318 708 1539 745">Color</th> <th data-bbox="1539 708 1759 745">Sty. Element</th> <th data-bbox="1759 708 1976 745">Motif</th> </tr> </thead> <tbody> <tr> <td data-bbox="1098 745 1318 818">Molded</td> <td data-bbox="1318 745 1539 818">No Applied Color</td> <td data-bbox="1539 745 1759 818">Ribbed</td> <td data-bbox="1759 745 1976 818">Individual A</td> </tr> </tbody> </table>	DecTech	Color	Sty. Element	Motif	Molded	No Applied Color	Ribbed	Individual A
DecTech	Color	Sty. Element	Motif							
Molded	No Applied Color	Ribbed	Individual A							

Ribbed, three lines



Ribbed, three lines are most often seen on the handle of Chinese porcelain teawares. Three molded ribs on the exterior of a handle lie adjacent to one another. The three ribs can look at bit like a cockscomb.

Stylistic Genre: None (leave field blank)

Stylistic Genre: None (leave field blank)

Related Stylistic Element Data:

DecTech	Color	Sty. Element	Motif
Molded	No Applied Color	Ribbed, three lines	Individual A

Ribbon



Sinuuous abstract lines that have knots or bows characterize a ribbon element. This is not to be confused with Swag 2, a swag that incorporates a more structured ribbon motif along the rim of a vessel.

Stylistic Genre: The genre for this stylistic element depends on a combination of decorative technique, color, and element.

Stylistic Genre: Handpainted Blue

Related Stylistic Element Data:

DecTech	Color	Sty. Element	Motif
Painted, under free hand	Purple-Blue, Intense Medium	Ribbon	Individual A

Roulette Band 03



Repeated arcs separated by a pair of dots or dashes, and a pair of diagonal lines. The pattern follows arc - dots - arc - diagonal lines.

Stylistic Genre: None (leave field blank)

Stylistic Genre: None (leave field blank)

Related Stylistic Element Data:

DecTech	Color	Sty. Element	Motif
Rouletted	No Applied Color	Roulette Band 03	Individual A

Roulette Band 06



This band consists of repeated impressed “staple”-like shapes. The impressed shapes have three sides and all sides form right angles with each other.

Stylistic Genre: None (leave field blank)

Stylistic Genre: None (leave field blank)

Related Stylistic Element Data:

DecTech	Color	Sty. Element	Motif
Rouletted	No Applied Color	Roulette Band 06	Individual A

Roulette Band 07



This band consists of stacked rows of circular elements. The rows are staggered so that the elements line up continuously diagonally. The elements can be either depressed or raised.

Stylistic Genre: None (leave field blank)

Stylistic Genre: None (leave field blank)

Related Stylistic Element Data:

DecTech	Color	Sty. Element	Motif
Rouletted	No Applied Color	Roulette Band 07	Individual A

Roulette Band 08



This band consists of a single incised/rouletted band with diced square bands above and below the incised plain band.

Stylistic Genre: None (leave field blank)

Stylistic Genre: None (leave field blank)

Related Stylistic Element Data:

DecTech	Color	Sty. Element	Motif
Rouletted	No Applied Color	Roulette Band 08	Individual A

Roulette Band 10



A series of connected circles with vertical lines at circle junctions. A dashed line runs horizontally through circles.

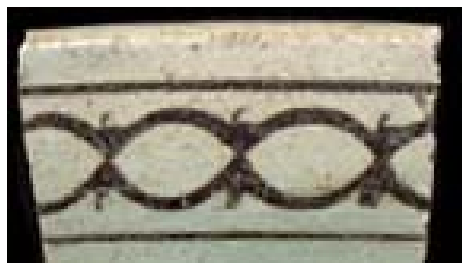
Stylistic Genre: Slipware, factory made

Stylistic Genre: Slipware, factory made

Related Stylistic Element Data:

DecTech	Color	Sty. Element	Motif
Rouletted	Not Applicable	Roulette Band 10	Individual A
Painted under, engine turned	Green-Yellow, Intense Medium	Roulette Band 10	Individual A

Roulette Band 11



This band is similar to Roulette Band 10: A series of connected circles (ovals, in this case) with vertical lines at oval junctions. Unlike Roulette Band 10, no horizontal line runs through the middle of this band. This example is flanked by a plain band above and below.

Stylistic Genre: Slipware, factory made

Stylistic Genre: Slipware, factory made

Related Stylistic Element Data:

DecTech	Color	Sty. Element	Motif
Slip, inlaid	Yellow-Red, Muted Dark	Roulette Band 11	Individual A

Roulette Band 12



Roulette Band 12 consists of impressed or raised lines forming linked chevrons oriented in opposite directions. Each chevron pair is separated by another raised line in the center of the band.

Stylistic Genre: Slipware, factory made

Stylistic Genre: Slipware, factory made

Related Stylistic Element Data:

DecTech	Color	Sty. Element	Motif
Rouletted	Not Applicable	Roulette Band 12	Individual A
Painted, under lathe/engine turned	Green, Intense Medium	Roulette Band 12	Individual A

Roulette Band 15



Composed of a row of impressed leaf-shaped pieces, each with impressed, vertical connected chevrons like “veins” of a leaf.

Stylistic Genre: The genre for this stylistic element depends on a combination of decorative technique, color, and element.



Stylistic Genre: Not Applicable

Related Stylistic Element Data:

DecTech	Color	Sty. Element	Motif
Rouletted	No Applied Color	Roulette Band 15	Individual A

Stylistic Genre: Slipware, factory made

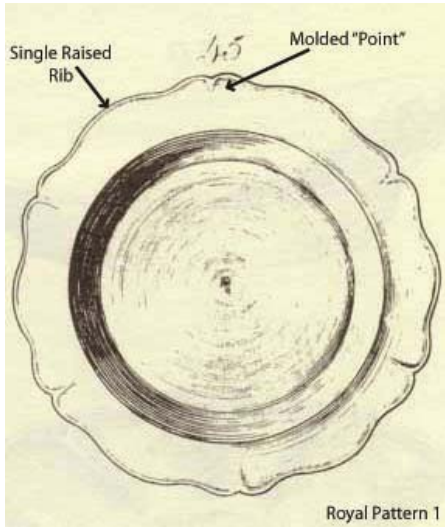
Related Stylistic Element Data:

DecTech	Color	Sty. Element	Motif
Slip, lathe/engine-turned	Yellow-Red, Muted Medium	Plain Band 01	Stacked Combination A
Rouletted	Not applicable	Roulette Band 15	Stacked Combination A
Slip, lathe/engine-turned	Blue, Muted Medium	Roulette Band 15	Stacked Combination A
Slip, lathe/engine-turned	Yellow-Red, Muted Medium	Plain Band 01	Individual A
Slip, lathe/engine-turned	Red/Yellow-Red, Muted Dark	Unidentified	Individual B

Roulette Band, unid.

Use this term when you have a rouletted band, but cannot identify the exact one.
Stylistic Genre: None (leave field blank)

Royal Pattern 01



A molded scalloped rim with single raised rib (sometimes as subtle as a slight rounded bump) where the rim meets the lip. At intervals, a molded line extends down from the scalloped rim onto the marley, creating small points. This differs from Queen's Shape patterns, where the molded line extends from the rim all the way down to the well of the vessel.

Stylistic Genre: Royal Pattern

Stylistic Genre: Royal Pattern

Related Stylistic Element Data:

Location	DecTech	Color	Sty. Element
Interior, Proximal Rim	Molded	No Applied Color	Royal Pattern 01

Sanskrit



Characters, often stylized, depicting the Sanskrit language.

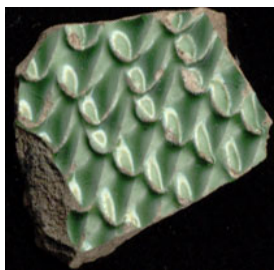
Stylistic Genre: The genre for this stylistic element depends on a combination of decorative technique, color, and element.

Stylistic Genre: Handpainted Blue

Related Stylistic Element Data:

DecTech	Color	Sty. Element	Motif
Painted, under free hand	Purple-Blue, Muted Dark	Sanskrit	Individual A, Repeated

Scales 01



Molded element resembling layers of fish scales.

Stylistic Genre: The genre for this stylistic element depends on a combination of decorative technique, color, and element.

Stylistic Genre: None (leave field blank)

Related Stylistic Element Data:

DecTech	Color	Sty. Element	Motif
Molded	No Applied Color	Scales 01	Individual A

Stylistic Genre: Molded Edge Decoration, other

Related Stylistic Element Data:

DecTech	Color	Sty. Element	Motif
Molded	No Applied Color	Scales 01	Individual A

Scales 02



Painted element resembling layers of fish scales (Unlike fish roe, the scales appear to be oriented in an upwards direction. Extending from the bottom point of each scale are thin fingers, somewhat botanical in appearance)

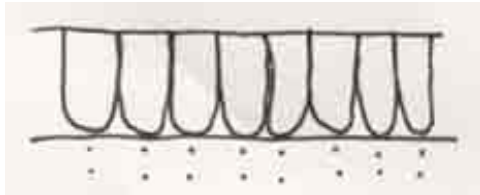
Stylistic Genre: The genre for this stylistic element depends on a combination of decorative technique, color, and element.

Stylistic Genre: Overglaze, handpainted

Related Stylistic Element Data:

DecTech	Color	Sty. Element	Motif
Painted, over free hand	Red, Intense Medium	Scales 02	Individual A

Scallop Band 01



Scallop Band 1 is characterized by a continuous band of elongated half-circles enclosed between two plain bands. Directly outside the enclosed band and underneath each rounded portion of the half-circle, sit two separate dots painted one on top of the other (*in a vertical formation*). This band is most often seen on overglazed Chinese porcelain.

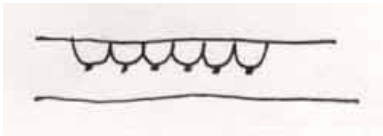
Stylistic Genre: The genre for this stylistic element depends on a combination of decorative technique, color, and element.

Stylistic Genre: Overglaze, handpainted

Related Stylistic Element Data:

DecTech	Color	Sty. Element	Motif
Painted, over free hand	Unidentifiable	Scallop Band 01	Individual A

Scallop Band 02



Scallop Band 2 is characterized by a continuous band of small half-circles painted between two, thin plain bands. Unlike Scallop Band 1, the half-circles in Scallop Band 2 do not touch the bottom plain band. Attached to the base of each half-circle is a single dot or short line. The half-circles may be empty or they may be painted solid, as the two examples demonstrate.

Note: Very similar to Scallop Band 13

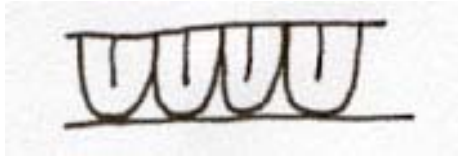
Stylistic Genre: The genre for this stylistic element depends on a combination of decorative technique, color, and element.

Stylistic Genre: Overglaze, handpainted

Related Stylistic Element Data:

DecTech	Color	Sty. Element	Motif
Painted, over free hand	Red, Intense Medium	Scallop Band 02	Individual A

Scallop Band 03



Scallop Band 3 is characterized by a continuous band of elongated half-circles painted between two plain bands. Inside each half-circle is a straight line extending from the plain band but not the full length of the half-circle.

Stylistic Genre: The genre for this stylistic element depends on a combination of decorative technique, color, and element.

Stylistic Genre: Overglaze, handpainted

Related Stylistic Element Data:

DecTech	Color	Sty. Element	Motif
Painted, over free hand	Unidentifiable	Scallop Band 03	Individual A

Scallop Band 04



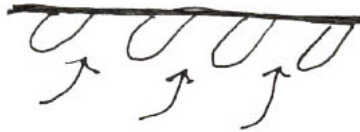
Multiple half-circles extend from a plain band. Each half-circle is separate. An arrow with a curved tail extends upward into the space separating each half-circle. The arrows do not touch the half-circles or the band. This is seen primarily on overglaze porcelain.

Stylistic Genre: The genre for this stylistic element depends on a combination of decorative technique, color, and element.

Stylistic Genre: Overglaze, handpainted

Related Stylistic Element Data:

DecTech	Color	Sty. Element	Motif
Painted, over free hand	Yellow-Red, Muted Medium	Scallop Band 04	Individual A



Scallop Band 05



Scallop Band 5 is a simple band of continuous scallops, or upside down half-circles encircling the vessel and extending from a band above. The half-circles may be solid, outlined in a separate color, or have no fill.

Stylistic Genre: The genre for this stylistic element depends on a combination of decorative technique, color, and element.

Stylistic Genre: Overglaze, handpainted

Related Stylistic Element Data:

DecTech	Color	Sty. Element	Motif
Painted, over free hand	Gilt	Scallop Band 05	Individual A

Scallop Band 06



Scallop Band 06 is a simple band composed of connected half circles that are pointed upward.

Stylistic Genre: The genre for this stylistic element depends on a combination of decorative technique, color, and element.

Stylistic Genre: Handpainted Blue

Related Stylistic Element Data:

DecTech	Color	Sty. Element	Motif
Painted, under free hand	Purple-Blue, Muted Dark	Scallop Band 06	Individual A

Scallop Band 09



This consists of repeated rows of thin molded scalloped bands. Seen on factory made slipwares.

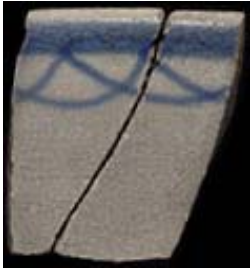
Stylistic Genre: Slipware, factory made

Stylistic Genre: Slipware, factory made

Related Stylistic Element Data:

DecTech	Color	Sty. Element	Motif
Incised, lathe/engine turned	No Applied Color	Scallop Band 09	Individual A, Repeated
Slip, lathe/engine turned	Neutrals, Dark	Plain Band 01	Individual A
Incised, lathe/engine turned	Not Applicable	Scallop Band 09	Individual A

Scallop Band 12



Scallop Band 12 consists of overlapping arcs hanging from a plain band.

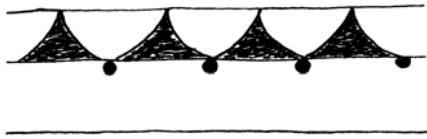
Stylistic Genre: The genre for this stylistic element depends on a combination of decorative technique, color, and element.

Stylistic Genre: Handpainted Blue

Related Stylistic Element Data:

DecTech	Color	Sty. Element	Motif
Painted, under free hand	Purple-Blue, Intense Dark	Scallop Band 12	Individual A

Scallop Band 13



This band is characterized by continuous band of half-circles with small circles at the bottom. A thin line runs along the bottom of the circles, and the spaces between the edge of circles and the line are filled in. The half circles are bound by two plain bands.

Note: Very similar to Scallop Band 02

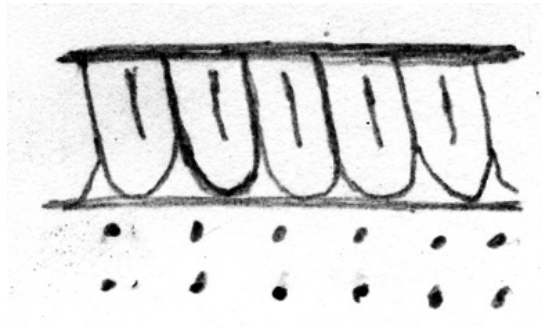
Stylistic Genre: The genre for this stylistic element depends on a combination of decorative technique, color, and element.

Stylistic Genre: Overglaze, handpainted

Related Stylistic Element Data:

DecTech	Color	Sty. Element	Motif
Painted, over free hand	Red, Muted Medium	Scallop Band 13	Individual A

Scallop Band 14



Scallop Band 14 is a combination of Scallop Band 01 and Scallop Band 03: it is characterized by a continuous band of elongated half-circles with straight lines extending in the middle of them, enclosed between two plain bands. Directly outside the enclosed band and underneath each rounded portion of the half-circle, sit two separate dots painted one on top of the other (*in a vertical formation*). This band is most often seen on overglazed Chinese porcelain.

Stylistic Genre: The genre for this stylistic element depends on a combination of decorative technique, color, and element.

Stylistic Genre: Overglaze, handpainted

Related Stylistic Element Data:

DecTech	Color	Sty. Element	Motif
Painted, over free hand	Unidentifiable	Scallop Band 14	Individual A

Scallop Band 16



A band formed by alternating scallops and teardrops: scallops have the top half filled/bottom half outlined, teardrops have the bottom half filled/top half outlined only.

Stylistic Genre: The genre for this stylistic element depends on a combination of decorative technique, color, and element.

Stylistic Genre: Handpainted Blue

Related Stylistic Element Data:

DecTech	Color	Sty. Element	Motif
Painted, under free hand	Purple-Blue, Intense Dark	Scallop Band 16	Individual A

Scallop Band 17



This element, seen here on Scratch Blue, consists of multiple stacked line components that form a gently sweeping upside down broad “v-shape.”

Stylistic Genre: The genre for this stylistic element depends on a combination of decorative technique, color, and element.

Stylistic Genre: Scratch Blue

Related Stylistic Element Data:

DecTech	Color	Sty. Element	Motif
Scratch/Fill	Purple-Blue, Intense Medium	Scallop Band 17	Individual A

Scallop Band 19



Similar to Scallop Band 05. This element consists of a band of scallops with dots or smaller scallops within the larger scallop. The band in this example is stacked with a plain band, but the plain band is a separate element.

Stylistic Genre: The genre for this stylistic element depends on a combination of decorative technique, color, and element.

Stylistic Genre: Polychrome, other

Related Stylistic Element Data:

DecTech	Color	Sty. Element	Motif
Painted, under free hand	Purple, Muted Dark	Scallop Band 19	Stacked Combination A
Painted, under free hand	Green-Yellow, Muted Light	Scallop Band 19	Stacked Combination A

Scallop Band, unid.

This classification should be used when small, unidentifiable portions of a scallop band are present on a sherd. It is often the case that the decoration can be identified as a scallop band but not enough is present to name the exact scallop band. Scallop Band, unid. should be used in these cases.

Stylistic Genre: The genre for this stylistic element depends on a combination of decorative technique, color, and element.

Scalloped Edge



Use this element to describe edges on refined earthenwares, stonewares and porcelain (**Not** Colonoware or Coarse Earthenware, unid.). Scalloped Edge describes any molded rim or vessel edge that is scalloped. The edge may be heavily scalloped or simply indented at a few points along the rim. **DO NOT** use Scalloped Edge to describe Royal Pattern, Feather Edge, Queens Pattern, or Shell Edge decoration.

Stylistic Genre: Molded Edge Decoration, other

Stylistic Genre: Molded Edge Decoration, other

Related Stylistic Element Data:

DecTech	Color	Sty. Element	Motif
Molded	No Applied Color	Scalloped Edge	Individual A

Scalloped Edge 01, slanted



Use this element to describe edges **only** on Colonoware or Coarse Earthenware, unid. 0-10 millimeters between peaks of scallops. Scallops are oriented slightly diagonally.

Stylistic Genre: None (leave field blank)

Stylistic Genre: None (leave field blank)

Related Stylistic Element Data:

DecTech	Color	Sty. Element	Motif
Cut	No Applied Color	Scalloped Edge 01, slanted	Individual A

Scalloped Edge 01, straight



Use this element to describe edges **only** on Colonoware or Coarse Earthenware, unid.
0-10 millimeters between peaks of scallops.

Stylistic Genre: None (leave field blank)

Stylistic Genre: None (leave field blank)

Related Stylistic Element Data:

DecTech	Color	Sty. Element	Motif
Cut	No Applied Color	Scalloped Edge 01, straight	Individual A

Scalloped Edge 02, straight



Use this element to describe edges **only** on Colonoware or Coarse Earthenware, unid.
10.1-25 millimeter between peaks

Stylistic Genre: None (leave field blank)

Stylistic Genre: None (leave field blank)

Related Stylistic Element Data:

DecTech	Color	Sty. Element	Motif
Cut	No Applied Color	Scalloped Edge 02, straight	Individual A

Scalloped Edge 03, straight



Use this element to describe edges **only** on Colonoware or Coarse Earthenware, unid.
Greater than 25.1 millimeters between peaks

Stylistic Genre: None (leave field blank)

Stylistic Genre: None (leave field blank)

Related Stylistic Element Data:

DecTech	Color	Sty. Element	Motif
Cut	No Applied Color	Scalloped Edge 03, straight	Individual A

Scalloped Edge, spiked



Use this element only for stonewares and refined earthenwares. This scalloped edge is characterized by accentuated points at the peaks of scalloped rims. It often appears on White Salt Glazed Stoneware rims with molded marley patterns.

Stylistic Genre:
Dot/Diaper/Basketweave

Stylistic Genre: Dot/Diaper/Basketweave

Related Stylistic Element Data:

DecTech	Color	Sty. Element	Motif
Molded	No Applied Color	Scalloped Edge, spiked	Individual A
Molded	No Applied Color	Basket Weave 01	Adjacent Combination A
Molded	No Applied Color	Diaper/ 5 Dot	Adjacent Combination A
Molded	No Applied Color	Plume, Botanical	Adjacent Combination A

Scalloped Edge, unid

Use this element to describe edges **only** on Colonoware or Coarse Earthenware, unid. when small, unidentifiable portions of a scalloped edge are present on a sherd but not enough to measure the distance between scallops.

Stylistic Genre: None (leave field blank)

Scribble Pattern



A band of squiggly, alternating colors.

Stylistic Genre: Polychrome, warm

Stylistic Genre: Polychrome, warm

Related Stylistic Element Data:

DecTech	Color	Sty. Element	Motif
Painted, under free hand	Purple-Blue, Intense Dark	Scribble Pattern	Individual A
Painted, under free hand	Yellow-Red, Intense Medium	Scribble Pattern	Individual A

Scroll 01



A single thin line painted in a diamond or circle-shaped scroll. This element is most often seen as a segment of a painted band located in the well of flat Chinese porcelain vessels, such as plates and platters.

Stylistic Genre: The genre for this stylistic element depends on a combination of decorative technique, color, and element.

Stylistic Genre: Handpainted Blue

Related Stylistic Element Data:

DecTech	Color	Sty. Element	Motif
Painted, under free hand	Purple-Blue, Muted Medium	Scroll 01	Individual A

Scroll 02



A Scroll 2 element can be composed of one or multiple swirled circles or round scrolls. If you cannot identify the circles as forming a band, then give them the general classification of Circle 1. If there is more than one swirled circle, make sure that the motif indicates that it is a repeated element.

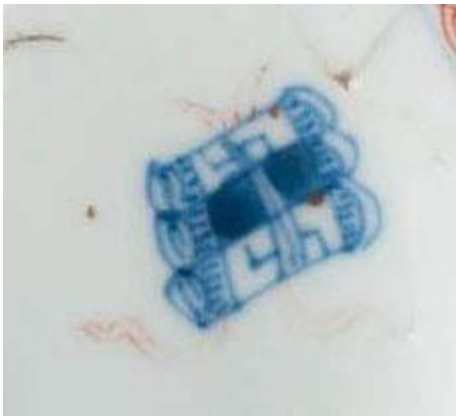
Stylistic Genre: The genre for this stylistic element depends on a combination of decorative technique, color, and element.

Stylistic Genre: Handpainted Blue

Related Stylistic Element Data:

DecTech	Color	Sty. Element	Motif
Painted, under free hand	Purple-Blue, Muted Medium	Scroll 02	Individual A

Scroll 03



Any literal depiction of rolled up paper. This example is one of many auspicious symbols within the “Hundred Antiquities” pattern.

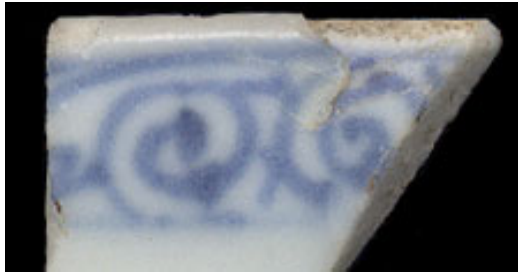
Stylistic Genre: The genre for this stylistic element depends on a combination of decorative technique, color, and element.

Stylistic Genre: Imari
Pattern Name: Hundred Antiquities

Related Stylistic Element Data:

DecTech	Color	Sty. Element	Motif
Painted, under free hand	Purple-Blue, Muted Medium	Scroll 03	Individual A
Painted, over free hand	Red, Intense Medium	Ribbon	Individual A

Scroll Band 01



This band consists of mirror-image scrolls, facing each other. The one example of this sherd has an ambiguous area between the scrolls that appears to connect them. The band is bounded by a single line on the top and bottom.

Stylistic Genre: The genre for this stylistic element depends on a combination of decorative technique, color, and element.

Stylistic Genre: Handpainted Blue

Related Stylistic Element Data:

DecTech	Color	Sty. Element	Motif
Painted, under free hand	Purple-Blue, Muted Medium	Scroll Band 01	Individual A

Scroll Band 02



Single band of adjoining swirled circles.

Stylistic Genre: The genre for this stylistic element depends on a combination of decorative technique, color, and element.

Stylistic Genre: Handpainted Blue

Related Stylistic Element Data:

DecTech	Color	Sty. Element	Motif
Painted, under free hand	Purple-Blue, Intense Dark	Scroll Band 02	Individual A

Scroll Band 03



This band is characterized by large, swirls/curls of an incomplete scroll. Some are upside-down and others are right side up. These swirls lie between two thin solid lines. There may or may not be a solid colored background.

Stylistic Genre: *The genre for this stylistic element depends on a combination of decorative technique, color, and element.*

Stylistic Genre: Handpainted Blue

Related Stylistic Element Data:

DecTech	Color	Sty. Element	Motif
Painted, under free hand	Purple-Blue, Intense Dark	Scroll Band 03	Individual A
Painted, under free hand	Purple-Blue, Muted Medium	Scroll Band 03	Individual A

Scroll Band 04



This band is characterized by small, finely painted swirls of an incomplete scroll. They alternated direction and have small lines, or “tick” marks extending from sections of the scroll. These swirls lie between two thin solid lines. There may or may not be a solid colored background.

Stylistic Genre: The genre for this stylistic element depends on a combination of decorative technique, color, and element.

Stylistic Genre: Handpainted Blue

Related Stylistic Element Data:

DecTech	Color	Sty. Element	Motif
Painted, under free hand	Purple-Blue, Intense Dark	Scroll Band 04	Individual A

Scroll Band 05



This band is characterized by a continuous scroll situated between stylized shell elements. The shell elements may face up or down. The scroll and shells form a single band, Scroll Band 05.

Stylistic Genre: The genre for this stylistic element depends on a combination of decorative technique, color, and element.

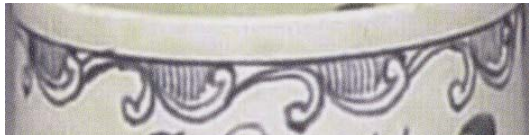


Stylistic Genre: Overglaze, handpainted

Related Stylistic Element Data:

DecTech	Color	Sty. Element	Motif
Painted, over free hand	Red, Muted Medium	Scroll Band, 05	Individual A
Painted, over free hand	Gilt	Scroll Band, 05	Individual A

Scroll Band 06



A single plain band with alternating outlined scrolls (with no fill) oriented in opposite directions extending below it. A series of closely-spaced vertical lines fill the space above the swirls that are oriented upward.

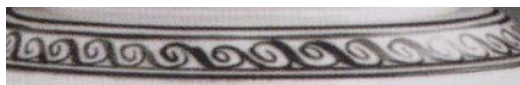
Stylistic Genre: The genre for this stylistic element depends on a combination of decorative technique, color, and element.

Stylistic Genre: Handpainted Blue

Related Stylistic Element Data:

DecTech	Color	Sty. Element	Motif
Painted, under free hand	Purple-Blue, Intense Dark	Scroll Band 06	Individual A

Scroll Band 07



A series of connected swirls facing one direction and bound by a band above and below.

Stylistic Genre: The genre for this stylistic element depends on a combination of decorative technique, color, and element.

Stylistic Genre: Handpainted Blue

Related Stylistic Element Data:

DecTech	Color	Sty. Element	Motif
Painted, under free hand	Blue, Muted Dark	Scroll Band 07	Individual A

Scroll Band 08



A band of alternating outlined scrolls (with no fill) oriented in opposite directions, bordered by a single plain band above and a double band below.

Stylistic Genre: The genre for this stylistic element depends on a combination of decorative technique, color, and element.

Stylistic Genre: Overglaze, Handpainted

Related Stylistic Element Data:

DecTech	Color	Sty. Element	Motif
Painted, over free hand	Yellow-red Intense Medium	Scroll Band 08	Individual A

Scroll Band, unid.



Use this term when you have a ceramic fragment with part of a scroll on it cannot identify the exact type.

Stylistic Genre: The genre for this stylistic element depends on a combination of decorative technique, color, and element.

Stylistic Genre: Overglaze, handpainted

Related Stylistic Element Data:

DecTech	Color	Sty. Element	Motif
Painted, over free hand	Red, Muted Medium	Scroll Band, unid.	Individual A
Painted, over free hand	Unidentifiable	Scroll Band, unid.	Individual A

Scroll, trellis



The Scroll, trellis element resembles a cannon and is most often seen on Chinese porcelains. It is a cylindrical scroll with trellis decoration painted on it.

Stylistic Genre: The genre for this stylistic element depends on a combination of decorative technique, color, and element.

Stylistic Genre: Handpainted Blue

Related Stylistic Element Data:

DecTech	Color	Sty. Element	Motif
Painted, under free hand	Purple-Blue, Intense Medium	Scroll, trellis	Individual A

Setting Sun



This is usually represented by a shaded half-circle above some depiction of a horizon, such as hills or water.

Stylistic Genre: The genre for this stylistic element depends on a combination of decorative technique, color, and element.

Stylistic Genre: Handpainted Blue

Related Stylistic Element Data:

DecTech	Color	Sty. Element	Motif
Painted, under free hand	Purple-Blue, Intense Dark	Setting Sun	Scene A

Shading



This is any representation of shading; often it appears as an area of graduated parallel lines in Chinoiserie scenes.

Stylistic Genre: The genre for this stylistic element depends on a combination of decorative technique, color, and element.

Stylistic Genre: Handpainted Blue

Related Stylistic Element Data:

DecTech	Color	Sty. Element	Motif
Painted, under free hand	Purple-Blue, Muted Dark	Shading	Individual A

Shell Edge 01



Rococo shell edge. The rococo style is the earliest of the shell edge designs. It includes an undulating rim and incised, wavy lines around the edge. The molded design is carefully painted blue or green, following the edge of the vessel. The shell design may incorporate a molded ‘bud’ at intervals among the wavy lines. Almost exclusively found on pearlware.

Stylistic Genre: Shell Edge. Select Shell Edge plus the appropriate color (i.e. Shell Edge Blue, Shell Edge, Green, etc.)

Stylistic Genre: Shell Edge, blue

Related Stylistic Element Data:

DecTech	Color	Sty. Element	Motif
Painted, under free hand	Purple-Blue, Intense Dark	Shell Edge 01	Individual A
Molded	Not Applicable	Shell Edge 01	Individual A

Shell Edge 02



Even scallop with wavy lines. The rim is regularly scalloped rather than undulating (think repeating arcs) and sometimes has intermittent molded “buds” as seen in these examples. The wavy, engraved lines descending down from the edge complete the shell motif. Found primarily on pearlware, sometimes on early whiteware. Note that sometimes this shell edge has intermittent “buds,” as seen in the second and third examples.

Stylistic Genre: Shell Edge. Select Shell Edge plus the appropriate color (i.e. Shell Edge Blue, Shell Edge, Green, etc.)

Stylistic Genre: Shell Edge, blue

Related Stylistic Element Data:

DecTech	Color	Sty. Element	Motif
Painted, under free hand	Purple-Blue, Intense Medium	Shell Edge 02	Individual A
Molded	Not Applicable	Shell Edge 02	Individual A



Shell Edge 03



The rim of the vessel is regularly scalloped (a series of repeating arcs), and the lines of the shell motif are straight (at right angles to the rim) rather than wavy. The painting around the edge is sometimes only a simple band of color, with no attempt to following the impressed lines of the motif.

Stylistic Genre: *Shell Edge. Select Shell Edge plus the appropriate color (i.e. Shell Edge Blue, Shell Edge, Green, etc.)*

Stylistic Genre: Shell Edge, green

Related Stylistic Element Data:

DecTech	Color	Sty. Element	Motif
Painted, under free hand	Green, Intense Medium	Shell Edge 03	Individual A
Molded	Not Applicable	Shell Edge 03	Individual A

Shell Edge 04



Unscalped edge with simple, lightly impressed lines perpendicular to the edge. The rim can be either straight or angular. The painting around the edge can be simply a band of color, not following the impressed lines of the motif.

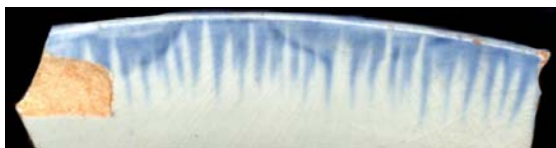
Stylistic Genre: Shell Edge. Select Shell Edge plus the appropriate color (i.e. Shell Edge Blue, Shell Edge, Green, etc.)

Stylistic Genre: Shell Edge, green

Related Stylistic Element Data:

DecTech	Color	Sty. Element	Motif
Painted, under free hand	Blue-Green, Intense Medium	Shell Edge 04	Individual A
Molded	Not Applicable	Shell Edge 04	Individual A

Shell Edge 05



Unscalped and unmolded. The rim edge is not scalloped, and the shell motif is simply painted on.

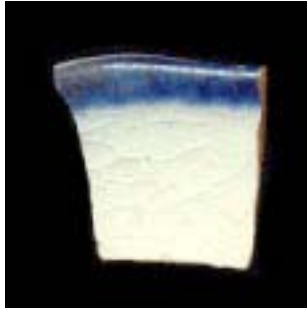
Stylistic Genre: Shell Edge. Select Shell Edge plus the appropriate color (i.e. Shell Edge Blue, Shell Edge, Green, etc.)

Stylistic Genre: Shell Edge, blue

Related Stylistic Element Data:

DecTech	Color	Sty. Element	Motif
Painted, under free hand	Blue, Intense Light	Shell Edge 05	Individual A

Shell Edge 06



Scalloped edge with no molding. Painted band following the edge, but no impressed or painted shell motif.

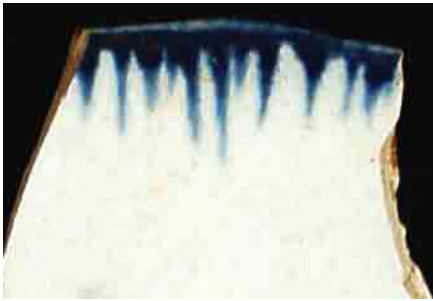
Stylistic Genre: Shell Edge. Select Shell Edge plus the appropriate color (i.e. Shell Edge Blue, Shell Edge, Green, etc.)

Stylistic Genre: Shell Edge, blue

Related Stylistic Element Data:

DecTech	Color	Sty. Element	Motif
Painted, under free hand	Purple-Blue, Intense Dark	Shell Edge 06	Individual A

Shell Edge 07



Scalloped edge with no molding. Painted line along edge feathers downward in imitation of more detailed molded and painted shell edge.

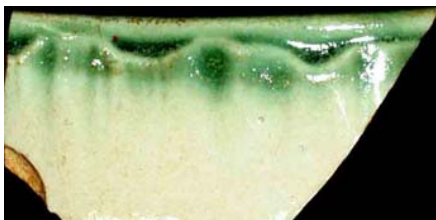
Stylistic Genre: Shell Edge. Select Shell Edge plus the appropriate color (i.e. Shell Edge Blue, Shell Edge, Green, etc.)

Stylistic Genre: Shell Edge, blue

Related Stylistic Element Data:

DecTech	Color	Sty. Element	Motif
Painted, under free hand	Purple-Blue, Intense Dark	Shell Edge 07	Individual A

Shell Edge 08



This shell edge is a combination of a single, impressed, scalloped line directly below the rim. Vertical molded lines run from the scalloped line and down the vessel. A band of color runs around the proximal rim.

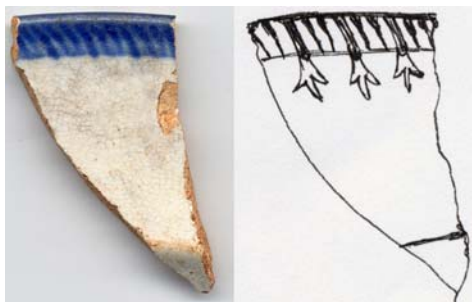
Stylistic Genre: Shell Edge. Select Shell Edge plus the appropriate color (i.e. Shell Edge Blue, Shell Edge, Green, etc.)

Stylistic Genre: Shell Edge, green

Related Stylistic Element Data:

DecTech	Color	Sty. Element	Motif
Painted, under free hand	Green, Intense Medium	Shell Edge 08	Individual A
Molded	Not Applicable	Shell Edge 08	Individual A

Shell Edge 09



Unscalloped edge with faint impressed lines that extend from the lip and branch to form “chicken feet”. The shell motif is painted over a simple band-like backdrop of color.

Stylistic Genre: Shell Edge. Select Shell Edge plus the appropriate color (i.e. Shell Edge Blue, Shell Edge, Green, etc.)

Stylistic Genre: Shell Edge, blue

Related Stylistic Element Data:

DecTech	Color	Sty. Element	Motif
Painted, under free hand	Purple-Blue, Intense Dark	Shell Edge 09	Individual A
Molded	Not Applicable	Shell Edge 09	Individual A

Shell Edge 10



Unscalped edge with impressed wavy lines. The molded lines descending down from the edge are wavy and the painted band frequently follows the molded lines. Note that Shell Edge 10 is very similar to Shell Edge 02. The distinguishing characteristic is that Shell Edge 02 has a molded scalped edge while Shell Edge 10 is executed on a vessel without a scalped rim. Found primarily on pearlware, sometimes on early whiteware.

Stylistic Genre: Shell Edge. Select Shell Edge plus the appropriate color (i.e. Shell Edge Blue, Shell Edge, Green, etc.)

Stylistic Genre: Shell Edge, blue

Related Stylistic Element Data:

DecTech	Color	Sty. Element	Motif
Painted, under free hand	Purple-Blue, Intense Dark	Shell Edge 10	Individual A
Molded	Not Applicable	Shell Edge 10	Individual A

Shell Edge 11



Unscalped edge with molded wavy lines. The large molded lines descending down from the edge are wavy, with smaller, thinner wavy lines also extending down. Note that Shell Edge 11 can also have applied color. Found primarily on pearlware, sometimes on early whiteware.

Stylistic Genre: Molded Edge Decoration, other

Stylistic Genre: Molded Edge Decoration, other

Related Stylistic Element Data:

DecTech	Color	Sty. Element	Motif
Molded	No Applied Color	Shell Edge 11	Individual A

		
--	--	--

Shell Edge 12



Undulating scalloped edge with impressed wavy lines. Very similar to Shell Edge 01, except that the shell edge does not descend directly from the scalloped edge. A white, unpainted space lies between the scalloped edge and the painted, molded lines. The molded wavy lines are only partially painted.

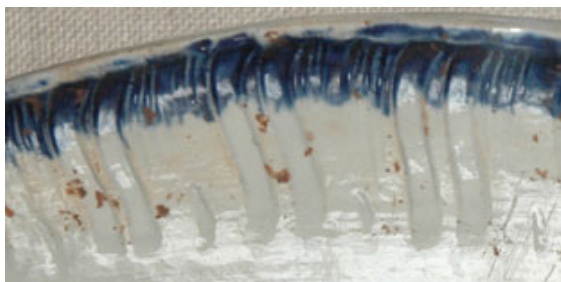
Stylistic Genre: Shell Edge. Select Shell Edge plus the appropriate color (i.e. Shell Edge Blue, Shell Edge, Green, etc.)

Stylistic Genre: Shell Edge, blue

Related Stylistic Element Data:

DecTech	Color	Sty. Element	Motif
Painted, under free hand	Purple-Blue, Intense Dark	Shell Edge 12	Individual A
Molded	Not Applicable	Shell Edge 12	Individual A

Shell Edge 13



Undulating, elongated scalloped edge with impressed wavy lines. Most of the small wavy lines are fully painted. Includes two parallel, deep, partially painted channels between the usual wavy lines. Also includes a tick mark between the sets of channels farther down the body.

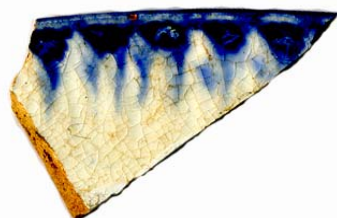
Stylistic Genre: Shell Edge. Select Shell Edge plus the appropriate color (i.e. Shell Edge Blue, Shell Edge, Green, etc.)

Stylistic Genre: Shell Edge, blue

Related Stylistic Element Data:

DecTech	Color	Sty. Element	Motif
Painted, under free hand	Purple-Blue, Intense Dark	Shell Edge 13	Individual A
Molded	Not Applicable	Shell Edge 13	Individual A

Shell Edge 14



Unscalloped edge with lightly impressed wavy lines. Similar to shell edge 10 except that the painted decoration pools in small circles towards the rim of the vessel and the molded, wavy lines are farther apart.

Stylistic Genre: Shell Edge. Select Shell Edge plus the appropriate color (i.e. Shell Edge Blue, Shell Edge, Green, etc.)

Stylistic Genre: Shell Edge, blue

Related Stylistic Element Data:

DecTech	Color	Sty. Element	Motif
Painted, under free hand	Purple-Blue, Intense Dark	Shell Edge 14	Individual A
Molded	Not Applicable	Shell Edge 14	Individual A

Shell Edge 15



Unscalped edge with impressed wavy lines. A recessed band lies between the rim and molding. Shell Edge 15 can occur without paint.

Stylistic Genre: Shell Edge. Select Shell Edge plus the appropriate color (i.e. Shell Edge Blue, Shell Edge, Green, etc.)

Stylistic Genre: Shell Edge, blue

Related Stylistic Element Data:

DecTech	Color	Sty. Element	Motif
Painted, under free hand	Purple-Blue, Intense Dark	Shell Edge 15	Individual A
Molded	Not Applicable	Shell Edge 15	Individual A

Shell Edge 16



Unscalped edge with molded teardrops interrupted by a longer, trilobed element.

Stylistic Genre: Shell Edge. Select Shell Edge plus the appropriate color (i.e. Shell Edge Blue, Shell Edge, Green, etc.)

Stylistic Genre: Shell Edge, blue

Related Stylistic Element Data:

DecTech	Color	Sty. Element	Motif
Painted, under free hand	Purple-Blue, Intense Dark	Shell Edge 16	Individual A
Molded	Not Applicable	Shell Edge 16	Individual A

Shell Edge 17



A row of repeated molded or rouletted closely spaced thin lines that run vertically to the vessel's body.

Stylistic Genre: Shell Edge. Select Shell Edge plus the appropriate color (i.e. Shell Edge Blue, Shell Edge, Green, etc.)

Stylistic Genre: Shell Edge, blue

Related Stylistic Element Data:

DecTech	Color	Sty. Element	Motif
Painted, under free hand	Purple-Blue, Intense Dark	Shell Edge 17	Individual A
Molded	Not Applicable	Shell Edge 17	Individual A



Shell Edge 18



Unscalped edge with molded impressed wavy lines. The wavy lines follow a pattern of one short line followed by two long lines extending from the rim.

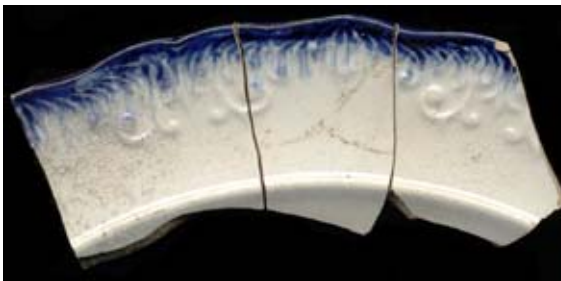
Stylistic Genre: Shell Edge. Select Shell Edge plus the appropriate color (i.e. Shell Edge Blue, Shell Edge, Green, etc.)

Stylistic Genre: Shell Edge, blue

Related Stylistic Element Data:

DecTech	Color	Sty. Element	Motif
Painted, under free hand	Purple-Blue, Intense Dark	Shell Edge 18	Individual A
Molded	Not Applicable	Shell Edge 18	Individual A

Shell Edge 19



Undulating, elongated scallop with typical shell edge molded decoration. This decoration also includes molded forms similar to feather edge, with scroll-like elements extending into the body. Paired, mirror-image scrolls are separated by a spearhead or chicken-foot design. Sets of paired scrolls are separated by medallion-like elements above a diamond shape. The medallion occurs at the rise in the scalloped edge, while the spearhead occurs at the dip in the scalloped edge. Blue painted edge occurs only to the end of the traditional shell edge wavy lines.

Stylistic Genre: Shell Edge. Select Shell Edge plus the appropriate color (i.e. Shell Edge Blue, Shell Edge, Green, etc.)

Stylistic Genre: Shell Edge, blue

Related Stylistic Element Data:

DecTech	Color	Sty. Element	Motif
Painted, under free hand	Purple-Blue, Intense Dark	Shell Edge 19	Individual A
Molded	Not Applicable	Shell Edge 19	Individual A

Shell Edge 20



The rim of the vessel is regularly scalloped (a series of repeating arcs), and the molded shell pattern features evenly spaced wavy impressions. The wavy lines follow a pattern of one long line followed by several short lines extending from the rim.

Stylistic Genre: Shell Edge. Select Shell Edge plus the appropriate color (i.e. Shell Edge Blue, Shell Edge, Green, etc.)

Stylistic Genre: Shell Edge, blue

Related Stylistic Element Data:

DecTech	Color	Sty. Element	Motif
Painted, under free hand	Purple-Blue, Intense Dark	Shell Edge 20	Individual A
Molded	Not Applicable	Shell Edge 20	Individual A

Shell Edge 21



The rim of the vessel is regularly scalloped (a series of repeating arcs), and the molded shell pattern features widely and evenly spaced wavy impressions. The molded decoration also features medallion-like elements descending from the molded rim.

(see “Raised Ovals”
<http://www.jefpat.org/diagnostic/P-ost-Colonial%20Ceramics/Shell%20Edged%20Wares/Embossed%20thumbnails.htm>)

Stylistic Genre: Shell Edge. Select Shell Edge plus the appropriate color (i.e. Shell Edge Blue, Shell Edge, Green, etc.)

Stylistic Genre: Shell Edge, green

Related Stylistic Element Data:

DecTech	Color	Sty. Element	Motif
Painted, under free hand	Green, Muted Medium	Shell Edge 21	Individual A
Molded	Not Applicable	Shell Edge 21	Individual A

Shell Edge 22



This element consists of a raised band of elongated S's with the paint filling in the low area in the upper portion of the band.

Stylistic Genre: Shell Edge. Select Shell Edge plus the appropriate color (i.e. Shell Edge Blue, Shell Edge, Green, etc.)

Stylistic Genre: Shell Edge, green

Related Stylistic Element Data:

DecTech	Color	Sty. Element	Motif
Painted, under free hand	Green, Muted Dark	Shell Edge 22	Individual A
Molded	Not Applicable	Shell Edge 22	Individual A

Shell Edge 23



Unscalped, molded edge with handpainted and molded lines oriented in different directions, creating a criss-cross effect.

Stylistic Genre: Shell Edge. Select Shell Edge plus the appropriate color (i.e. Shell Edge Blue, Shell Edge, Green, etc.)

Stylistic Genre: Shell Edge, blue

Related Stylistic Element Data:

DecTech	Color	Sty. Element	Motif
Painted, under free hand	Green, Muted Dark	Shell Edge 23	Individual A
Molded	Not Applicable	Shell Edge 23	Individual A

Shell Edge 24



A regularly-scalloped painted and molded scallop band with feathery elements extending downward from it.

Stylistic Genre: Shell Edge. Select Shell Edge plus the appropriate color (i.e. Shell Edge Blue, Shell Edge, Green, etc.)

Stylistic Genre: Shell Edge, blue

Related Stylistic Element Data:

DecTech	Color	Sty. Element	Motif
Painted, under free hand	Blue, Muted Dark	Shell Edge 24	Individual A
Molded	Not Applicable	Shell Edge 24	Individual A

Shell Edge 25



A repeating motif that mimics a fern. A vertical line or stylized “stem” appears at regular intervals with “leaves” extending diagonally and downward in opposite directions from the stem element.

Stylistic Genre: Shell Edge, green

Related Stylistic Element Data:

DecTech	Color	Sty. Element	Motif
Painted, under free hand	Green, Intense Medium	Shell Edge 25	Individual A
Molded	Not Applicable	Shell Edge 25	Individual A

Shell Edge 26



Slight diagonal molded lines extend straight down from an unscaloped edge. A thin line of paint follows the edge.

Stylistic Genre: Shell Edge, green

Related Stylistic Element Data:

DecTech	Color	Sty. Element	Motif
Painted, under free hand	Purple-Blue, Intense Medium	Shell Edge 26	Individual A
Molded	Not Applicable	Shell Edge 26	Individual A

Solid



Use this term when the decoration/applied color covers the entire sherd being cataloged or when referring to the “background color” e.g. with many factory made slipware designs.

Stylistic Genre: None (leave field blank)

Stylistic Genre: Slipware, factory made

Related Stylistic Element Data:

DecTech	Color	Sty. Element	Motif
Slip, lathe/engine turned	Blue, Muted Medium	Solid	Individual A

Spearhead Band 01



Spearhead Band 1 is an intricate spearhead band that is most often seen on overglazed Chinese porcelain. It is defined by two thin, painted bands upon which a repeated spearhead is drawn. The spearhead is a geometric shape that is attached to a single, wavy band. Consisting of three “petals,” the spearhead can appear botanical with two flaring petals and one center bud. The spearheads to the left appear rounded, but the spearheads can also be pointed. Although difficult to see, there is often gilding between each thin band.

Stylistic Genre: The genre for this stylistic element depends on a combination of decorative technique, color, and element.

Stylistic Genre: Overglaze, handpainted

Related Stylistic Element Data:

DecTech	Color	Sty. Element	Motif
Painted, over free hand	Red, Intense Medium	Spearhead Band 01	Individual A

Spearhead Band 02



This band consists of a repeating image. Two scrolls suspended below a line are connected by an arc, or half-circle, with a vertical line extending from the center. Directly underneath the half circle, there appears to be a single scallop connecting the image together.

Stylistic Genre: The genre for this stylistic element depends on a combination of decorative technique, color, and element.

Stylistic Genre: Handpainted Blue

Related Stylistic Element Data:

DecTech	Color	Sty. Element	Motif
Painted, under free hand	Blue, Muted Medium	Spearhead Band 02	Individual A

Spearhead Band 03



This band is a repeated pattern suspended from a single line. A three pointed spearhead (two adjacent dots with a single dot above both) flanked on either side by two dots aligned vertically.

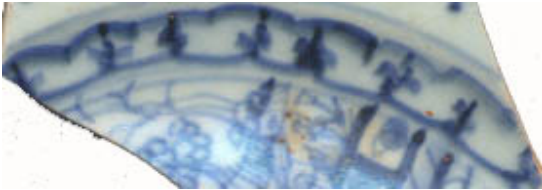
Stylistic Genre: The genre for this stylistic element depends on a combination of decorative technique, color, and element.

Stylistic Genre: Handpainted Blue

Related Stylistic Element Data:

DecTech	Color	Sty. Element	Motif
Painted, under free hand	Purple-Blue, Muted Dark	Spearhead Band 03	Individual A

Spearhead Band 04



Spearhead Band 4 has two scallop bands facing one another. In the space between, spearheads extending from the troughs of the top scallop band touch the peaks of the bottom scallop band.

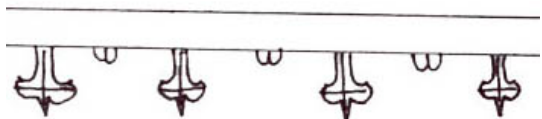
Stylistic Genre: The genre for this stylistic element depends on a combination of decorative technique, color, and element.

Stylistic Genre: Handpainted Blue

Related Stylistic Element Data:

DecTech	Color	Sty. Element	Motif
Painted, under free hand	Purple-Blue, Intense Medium	Spearhead Band 04	Individual A

Spearhead Band 05



This band is characterized by a loosely outlined cross (a three-pointed spearhead) flanked by a double looped scallop. Both images are suspended below a line.

Stylistic Genre: The genre for this stylistic element depends on a combination of decorative technique, color, and element.

Stylistic Genre: Overglaze, handpainted

Related Stylistic Element Data:

DecTech	Color	Sty. Element	Motif
Painted, over free hand	Unidentifiable	Spearhead Band 05	Individual A

Spearhead Band 06



This is a repeating image of two scrolls, rolling in reverse directions, sitting on a scallop band. Directly above the two scrolls sits a three pointed spearhead.

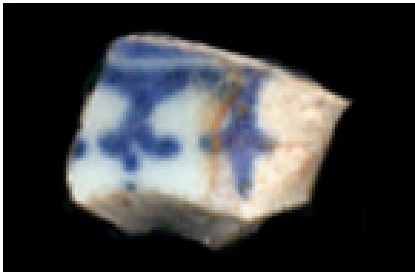
Stylistic Genre: The genre for this stylistic element depends on a combination of decorative technique, color, and element.

Stylistic Genre: Handpainted Blue

Related Stylistic Element Data:

DecTech	Color	Sty. Element	Motif
Painted, under free hand	Purple-Blue, Intense Dark	Spearhead Band 06	Individual A

Spearhead Band 07



This band is composed of a scalloped band with a solid triangular cross (a three point spearhead) extending from the peak of each scallop.

Stylistic Genre: The genre for this stylistic element depends on a combination of decorative technique, color, and element.

Stylistic Genre: Handpainted Blue

Related Stylistic Element Data:

DecTech	Color	Sty. Element	Motif
Painted, under free hand	Purple-Blue, Intense Dark	Spearhead Band 07	Individual A

Spearhead Band 08



This band has alternating scalloped peaks with curled ends (they look similar to the number “3” lying on its back) A half-circle sits atop the middle section of the scrolls, connecting the curled ends.

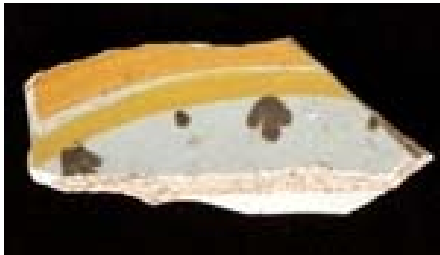
Stylistic Genre: The genre for this stylistic element depends on a combination of decorative technique, color, and element.

Stylistic Genre: Overglaze, handpainted

Related Stylistic Element Data:

DecTech	Color	Sty. Element	Motif
Painted, over free hand	Red, Intense Medium	Spearhead Band 08	Individual A

Spearhead Band 09



This band is similar to Spearhead Band 03. It is a repeated pattern suspended from a plain band. A three pointed spearhead is flanked on either side by a single dot (two dots flank Spearhead Band 03).

Stylistic Genre: Polychrome, Warm

Related Stylistic Element Data:

DecTech	Color	Sty. Element	Motif
Painted, under free hand	Green, Muted Medium	Spearhead Band 09	Individual A

Spearhead Band 10



This spearhead band has scalloped peaks alternating with a spearhead composed of three petals. It is similar to Spearhead Band 01 except this band has an additional plain band touching the spearhead band. The plain band near the rim is gilt in this example making it difficult to discern in the image.

Stylistic Genre: The genre for this stylistic element depends on a combination of decorative technique, color, and element.

Stylistic Genre: Overglaze, handpainted

Related Stylistic Element Data:

DecTech	Color	Sty. Element	Motif
Painted, over free hand	Gilt	Spearhead Band 10	Individual A
Painted, over free hand	Red, Intense Medium	Spearhead Band 10	Individual A

Spearhead Band 11



This band is a repeated pattern suspended from a single line. A three pointed spearhead descends from a dot and is flanked on either side by two dots aligned vertically and connected by a single vertical line.

Stylistic Genre: The genre for this stylistic element depends on a combination of decorative technique, color, and element.

Stylistic Genre: Handpainted Blue

Related Stylistic Element Data:

DecTech	Color	Sty. Element	Motif
Painted, under free hand	Purple-Blue, Muted Dark	Spearhead Band 11	Individual A

Spearhead Band 12



This band is suspended from a single line. Connected open circles (with smaller filled circles inside them) form a band. A spearhead is placed at each junction of circles. The spearhead is composed of dots aligned vertically.

Stylistic Genre: The genre for this stylistic element depends on a combination of decorative technique, color, and element.

Stylistic Genre: Handpainted Blue

Related Stylistic Element Data:

DecTech	Color	Sty. Element	Motif
Painted, under free hand	Purple-Blue, Muted Dark	Spearhead Band 12	Individual A

Spearhead Band 13



This band differs from other spearhead bands in that it is composed of a two-lobed spearhead instead of three lobes. It is very similar to Spearhead Band 10 except the spearheads here are oriented toward the rim.

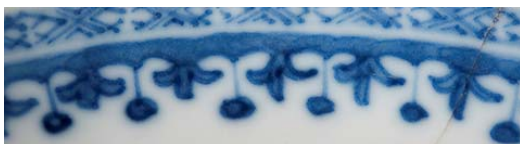
Stylistic Genre: The genre for this stylistic element depends on a combination of decorative technique, color, and element.

Stylistic Genre: Overglaze, handpainted

Related Stylistic Element Data:

DecTech	Color	Sty. Element	Motif
Painted, over free hand	Gilt	Spearhead Band 13	Individual A
Painted, over free hand	Red, Intense Dark	Spearhead Band 13	Individual A

Spearhead Band 14



A band comprised of a three-lobed spearhead alternating with a vertical line that has a ball at the end. Similar to Spearhead Band 10 with the addition of the line/ball element.

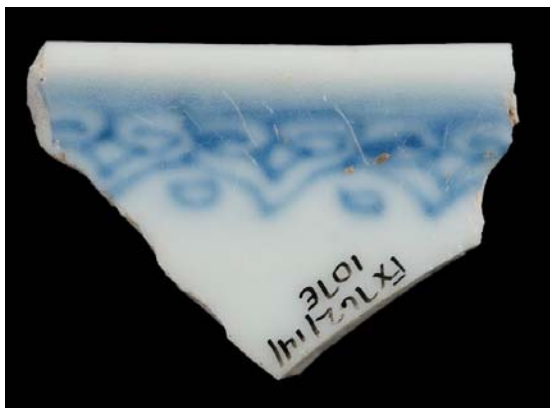
Stylistic Genre: The genre for this stylistic element depends on a combination of decorative technique, color, and element.

Stylistic Genre: Handpainted Blue

Related Stylistic Element Data:

DecTech	Color	Sty. Element	Motif
Painted, under free hand	Purple-Blue, Intense Dark	Spearhead Band 14	Individual A

Spearhead Band 15



A band of spearheads comprised of “triangle” elements suspended from a single line, each comprised of mirrored scrolls forming the base of the triangle. The spearheads or points alternate with open circles in the “white space” between them.

Stylistic Genre: The genre for this stylistic element depends on a combination of decorative technique, color, and element.

Stylistic Genre: Handpainted Blue

Related Stylistic Element Data:

DecTech	Color	Sty. Element	Motif
Painted, under free hand	Purple-Blue, Intense Medium	Spearhead Band 15	Individual A

Spearhead Band, unid.

This designation is used when only a small portion of a spearhead band is present, rendering the specific spearhead band impossible to identify.

Stylistic Genre: The genre for this stylistic element depends on a combination of decorative technique, color, and element.

Squares



This element is a repeating pattern of molded squares.

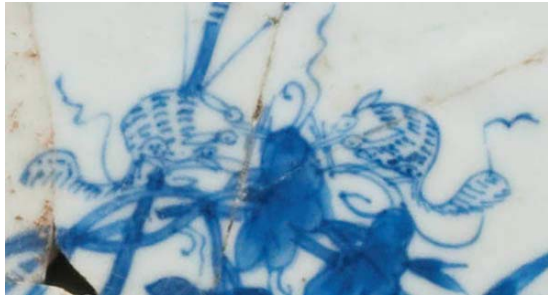
Stylistic Genre: None (leave field blank)

Stylistic Genre: None (leave field blank)

Related Stylistic Element Data:

DecTech	Color	Sty. Element	Motif
Molded	No Applied Color	Squares	Individual A

Squirrel



A depiction of a squirrel.

Stylistic Genre: The genre for this stylistic element depends on a combination of decorative technique, color, and element.

Stylistic Genre: Handpainted blue

Related Stylistic Element Data:

DecTech	Color	Sty. Element	Motif
Painted, under free hand	Purple-Blue, Intense Dark	Squirrel	Scene Combination A
Painted, under free hand	Purple-Blue, Intense Dark	Bamboo 01	Scene Combination A
Painted, under free hand	Purple-Blue, Intense Dark	Botanical, composite	Scene Combination A

Star



Any element that has multiple lines intersecting at all angles that form a star or an asterisk and is not associated with a band or other larger stylistic element.

Stylistic Genre: The genre for this stylistic element depends on a combination of decorative technique, color, and element.

Stylistic Genre: Polychrome, warm

Related Stylistic Element Data:

DecTech	Color	Sty. Element	Motif
Painted under, free hand	Yellow, Muted Dark	Star	Individual A, repeated
Painted under, free hand	Yellow, Muted Dark	Plain Band 01	Individual B

Star Band 01



Star Band 01 is defined as a thick solid band of color with stars or asterisks scattered across the band.

Stylistic Genre: The genre for this stylistic element depends on a combination of decorative technique, color, and element.

Stylistic Genre: Polychrome, warm

Related Stylistic Element Data:

DecTech	Color	Sty. Element	Motif
Painted under, free hand	Yellow, Muted Dark	Star Band 01	Individual A
Painted under, free hand	Yellow, Intense Medium	Star Band 01	Individual A

Star Band 02



Star Band 02 is composed of a single row of stars or asterisks that encircle a vessel, bracketed by two single bands.

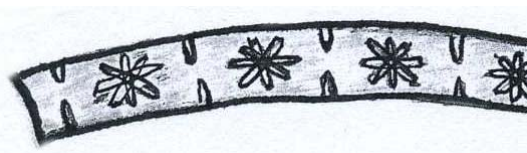
Stylistic Genre: The genre for this stylistic element depends on a combination of decorative technique, color, and element.

Stylistic Genre: Handpainted Blue

Related Stylistic Element Data:

DecTech	Color	Sty. Element	Motif
Painted under, free hand	Purple-Blue, Intense Medium	Star Band 02	Individual A

Star Band 03



Star Band 03 is composed of a single row of stars or asterisks alternating with “tick marks” in the spaces between.

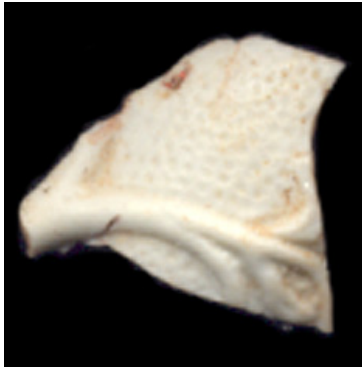
Stylistic Genre: The genre for this stylistic element depends on a combination of decorative technique, color, and element.

Stylistic Genre: Overglaze, handpainted

Related Stylistic Element Data:

DecTech	Color	Sty. Element	Motif
Painted over, free hand	Gilt	Star Band 03	Individual A

Stippled



Stippled can be used to describe both molded and painted surfaces. Stippling is characterized by small, densely repeated dots that are either molded or painted.

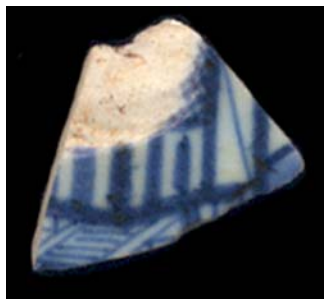
Stylistic Genre: None (leave field blank)

Stylistic Genre: None (leave field blank)

Related Stylistic Element Data:

DecTech	Color	Sty. Element	Motif
Molded	No Applied Color	Stippled	Individual A

Structure, unid.



Structure, unid. should be used when a portion of a structure is present on the sherd, but the type of structure (such as house, church, pagoda) cannot be identified.

Stylistic Genre: The genre for this stylistic element depends on a combination of decorative technique, color, and element.

Stylistic Genre: Handpainted Blue

Related Stylistic Element Data:

DecTech	Color	Sty. Element	Motif
Painted, under free hand	Blue, Muted Medium	Structure, unid	Individual A

Swag Band 01



Solid half-circles outlined by a thin line, or scallop band. A three-line tassel hangs from the corners of the half-circles, where the thin line meets.

Stylistic Genre: The genre for this stylistic element depends on a combination of decorative technique, color, and element.

Stylistic Genre: Handpainted Blue

Related Stylistic Element Data:

DecTech	Color	Sty. Element	Motif
Painted, under free hand	Purple-Blue, Intense Dark	Swag Band 01	Individual A

Swag Band 02



Wavy line is suspended from a single plain band encircling the vessel rim. A ribbon-like bow hangs from the meeting point of the wavy band and straight band. Most often seen on overglazed Chinese porcelain.

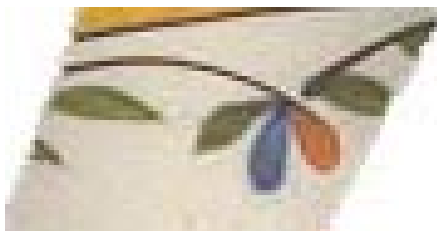
Stylistic Genre: The genre for this stylistic element depends on a combination of decorative technique, color, and element.

Stylistic Genre: Overglaze, handpainted

Related Stylistic Element Data:

DecTech	Color	Sty. Element	Motif
Painted over, free hand	Gilt	Swag Band 02	Individual A

Swag Band 03



This swag is defined by flowers and leaves hanging from a curved line (stem) with petals and leaves. Most often seen in combination with Plain Band 4.

Stylistic Genre: The genre for this stylistic element depends on a combination of decorative technique, color, and element.

Stylistic Genre: Polychrome, warm

Related Stylistic Element Data:

DecTech	Color	Sty. Element	Motif
Painted under, free hand	Green, Muted Medium	Swag Band 03	Individual A
Painted, under free hand	Yellow-Brown, Muted Dark	Swag Band 03	Individual A
Painted, under free hand	Red, Intense Medium	Swag Band 03	Individual A

Swag Band 05



This swag is characterized by interlaced, arching half-circles that have flowers suspended from the point where the half-circles meet. A single painted dot is placed between each suspended flower.

Stylistic Genre: The genre for this stylistic element depends on a combination of decorative technique, color, and element.

Stylistic Genre: Handpainted Blue

Related Stylistic Element Data:

DecTech	Color	Sty. Element	Motif
Painted under, free hand	Purple-Blue, Intense Dark	Swag Band 05	Individual A

Swag Band 06



Repeated half-circles with smaller "teardrops" drawn between each half-circle characterizes this Swag 6. These circles are suspended from a single line.

Stylistic Genre: The genre for this stylistic element depends on a combination of decorative technique, color, and element.

Stylistic Genre: Handpainted Blue

Related Stylistic Element Data:

DecTech	Color	Sty. Element	Motif
Painted under, free hand	Purple-Blue, Intense Medium	Swag Band 06	Individual A

Swag Band 07



Solid triangles hanging down from a single band, outlined by a zigzag. Three-lined tassels radiating downward between the triangles.

Stylistic Genre: The genre for this stylistic element depends on a combination of decorative technique, color, and element.

Stylistic Genre: Polychrome, warm

Related Stylistic Element Data:

DecTech	Color	Sty. Element	Motif
Painted under, free hand	Yellow-Brown, Intense Light	Swag Band 07	Individual A
Painted, under free hand	Green, Intense Light	Swag Band 07	Individual A
Painted, under free hand	Purple-Blue, Intense Medium	Swag Band 07	Individual A

Swag Band 09



A single row of half circles extending from a single line above.

Stylistic Genre: The genre for this stylistic element depends on a combination of decorative technique, color, and element.

Stylistic Genre: None, leave field blank

Related Stylistic Element Data:

DecTech	Color	Sty. Element	Motif
Molded	No applied color	Swag Band 09	Individual A

Swag Band 10



Connected half-circles separated by a single vertical line at each junction.

Stylistic Genre: The genre for this stylistic element depends on a combination of decorative technique, color, and element.

Stylistic Genre: Handpainted Blue

Related Stylistic Element Data:

DecTech	Color	Sty. Element	Motif
Painted, under free hand	Purple-Blue, Intense Dark	Swag Band 10	Stacked Combination A
Painted, under free hand	Purple-Blue, Intense Dark	Trellis Band 23	Stacked Combination A

Swag Band 11



Connected half-circles with solid half circles within them form a band. Four ovals form a diamond shape at the junction between half circles.

Stylistic Genre: The genre for this stylistic element depends on a combination of decorative technique, color, and element.

Stylistic Genre: Handpainted Blue

Related Stylistic Element Data:

DecTech	Color	Sty. Element	Motif
Painted, under free hand	Purple-Blue, Intense Dark	Swag Band 11	Individual A

Swag Band 12



A simple scallop band with a three-prong tassel at the junction between scallops. A single dot floats below the band at the midpoint of each scallop, alternating with the tassels.

Stylistic Genre: The genre for this stylistic element depends on a combination of decorative technique, color, and element.

Stylistic Genre: Polychrome, Warm

Related Stylistic Element Data:

DecTech	Color	Sty. Element	Motif
Painted, under free hand	Green, Muted Medium	Swag Band 12	Individual A
Painted, under free hand	Yellow-Red, Muted Dark	Swag Band 12	Individual A

Swag Band 13



An oversized, elongated scallop band composed of various botanical elements. An open circle is located at the peak of each swag and a large radial bloom is located at the trough of each swag. Smaller radial botanical clusters are located at regular intervals along the scalloped band.

Stylistic Genre: The genre for this stylistic element depends on a combination of decorative technique, color, and element.

Stylistic Genre: Handpainted Blue

Related Stylistic Element Data:

DecTech	Color	Sty. Element	Motif
Painted, under free hand	Purple-Blue, Muted Dark	Swag Band 13	Individual A

Swag Band 14



A solid scallop band outlined with open scallops. A three-prong spearhead is placed at each scallop junction with a single dot beneath each spearhead point.

Stylistic Genre: The genre for this stylistic element depends on a combination of decorative technique, color, and element.

Stylistic Genre: Handpainted Blue

Related Stylistic Element Data:

DecTech	Color	Sty. Element	Motif
Painted under, free hand	Purple-Blue, Intense Dark	Swag Band 14	Individual A

Swag Band 15



Connected half-circles with a single vertical line at each junction and a cross within each trough.

Stylistic Genre: Slipware, factory made

Stylistic Genre: Slipware, factory made

Related Stylistic Element Data:

DecTech	Color	Sty. Element	Motif
Slip, inlaid	Neutrals, Dark	Swag Band 15	Individual A

Swag Band 16



Two solid bands, one thick one thin, from which the swag descends. The swag itself consists of hanging scallops with brown and green leaves, and a tassel with green and brown leaves hangs from the corners of the half-circles.

Stylistic Genre: The genre for this stylistic element depends on a combination of decorative technique, color, and element.

Stylistic Genre: Polychrome Warm

Related Stylistic Element Data:

DecTech	Color	Sty. Element	Motif
Painted, under free hand	Yellow, Muted Dark	Swag Band 16	Individual A
Painted, under free hand	Green, Muted Medium	Swag Band 16	Individual A
Painted, under free hand	Yellow, Muted Medium	Swag Band 16	Individual A

Swag Band 17



A single lozenge-shaped vertical element or swag hangs from the troughs of a dogtooth band.

Stylistic Genre: The genre for this stylistic element depends on a combination of decorative technique, color, and element.

Stylistic Genre: Polychrome, warm

Related Stylistic Element Data:

DecTech	Color	Sty. Element	Motif
Painted, under free hand	Purple-Blue, intense dark	Swag Band 17	Individual A
Painted, under free hand	Purple-Blue, intense medium	Swag Band 17	Individual A
Painted, under free hand	Yellow, intense light	Swag Band 17	Individual A

Swastika



A cross with its arms bent at right angles, facing either right or left; a common Buddhist element.

Stylistic Genre: The genre for this stylistic element depends on a combination of decorative technique, color, and element.

Stylistic Genre: Handpainted Blue

Related Stylistic Element Data:

DecTech	Color	Sty. Element	Motif
Painted under, free hand	Purple-Blue, Intense Dark	Swastika	Individual A