

# DAACS Stylistic Element Glossary

## T-Z

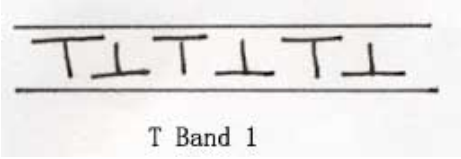


*by* Beatrix Arendt, Lynsey Bates, Leslie Cooper, Jillian Galle,  
Elizabeth Sawyer, Jesse Sawyer, and Karen Smith

Last Updated October 2018

T Band 01.....	5
Textured .....	5
Tick Mark.....	5
Tile Corner: Fleur-de-lis 01 .....	6
Tile Corner: Flower 01.....	6
Tile Corner: Ox-head 01 .....	7
Tortoiseshell.....	7
Trailed.....	8
Tree .....	9
Trellis 01 .....	10
Trellis 02 .....	10
Trellis 03 .....	11
Trellis, unid.....	12
Trellis Band 01.....	12
Trellis Band 02.....	13
Trellis Band 03.....	13
Trellis Band 04.....	14
Trellis Band 05.....	14
Trellis Band 06.....	14
Trellis Band 07.....	15
Trellis Band 08.....	15
Trellis Band 09.....	16
Trellis Band 10.....	16
Trellis Band 11.....	17
Trellis Band 12.....	18
Trellis Band 13.....	18
Trellis Band 14.....	19
Trellis Band 15.....	20
Trellis Band 16.....	20
Trellis Band 17.....	21
Trellis Band 18.....	21
Trellis Band 19.....	22
Trellis Band 20.....	22
Trellis Band 21.....	23
Trellis Band 23.....	23
Trellis Band 24.....	23

Trellis Band 25.....	24
Trellis Band 26.....	25
Trellis Band 27.....	25
Trellis Band 29.....	26
Trellis Band 30.....	26
Trellis Band 31.....	27
Trellis Band 32.....	27
Trellis Band 33.....	28
Trellis Band 34.....	28
Trellis Band 35.....	28
Trellis Band 36.....	29
Trellis Band 37.....	29
Trellis Band 38.....	29
Trellis Band 39.....	30
Trellis Band 40.....	30
Trellis Band 41.....	31
Trellis Band 42.....	31
Trellis Band 43.....	32
Trellis Band 45.....	32
Trellis Band 46.....	33
Trellis Band 47.....	33
Trellis Band 48.....	34
Trellis Band 49.....	34
Trellis Band, unid.....	35
Twig.....	35
Umbrella.....	36
Unidentified.....	37
Vase.....	38
Vertical Lines.....	38
Vessel, ceramic.....	39
Wall.....	40
Water, body of.....	40
Water Buffalo.....	41
Wavy Band 01 is not an identified band.....	41
Wavy Band 02.....	41
Wavy Band 03.....	42
Wavy Band 04.....	42

Wavy Band 06.....	43
Wavy Band 07.....	43
Wavy Band 08.....	44
Wavy Band 09.....	44
Wavy Band 10.....	44
Wavy Band 11.....	45
Wavy Band 13.....	45
Wavy Band 14.....	45
Wavy Band 16.....	46
Wings .....	47
Woman.....	47

Stylistic Element Name and Image	Characteristics	Cataloging Example for the Depicted Sherd											
<p data-bbox="247 151 392 180"><b>T Band 01</b></p>  <p data-bbox="233 386 348 415">T Band 1</p>	<p data-bbox="632 120 1192 261">Alternating right side up and upside down T's characterize this band. The T's are bound by two to four plain bands. Seen most often on overglaze porcelain.</p> <p data-bbox="632 298 1167 402"><b>Stylistic Genre:</b> The genre for this stylistic element depends on a combination of decorative technique, color, and element.</p>	<p data-bbox="1383 155 1894 188"><b>Stylistic Genre:</b> Overglaze, handpainted</p> <p data-bbox="1425 228 1852 261"><b>Related Stylistic Element Data:</b></p> <table border="1" data-bbox="1243 297 2039 443"> <thead> <tr> <th data-bbox="1243 297 1444 370">DecTech</th> <th data-bbox="1444 297 1661 370">Color</th> <th data-bbox="1661 297 1850 370">Sty. Element</th> <th data-bbox="1850 297 2039 370">Motif</th> </tr> </thead> <tbody> <tr> <td data-bbox="1243 370 1444 443">Painted, over free hand</td> <td data-bbox="1444 370 1661 443">Unidentifiable</td> <td data-bbox="1661 370 1850 443">T Band 01</td> <td data-bbox="1850 370 2039 443">Individual A</td> </tr> </tbody> </table>				DecTech	Color	Sty. Element	Motif	Painted, over free hand	Unidentifiable	T Band 01	Individual A
DecTech	Color	Sty. Element	Motif										
Painted, over free hand	Unidentifiable	T Band 01	Individual A										
<p data-bbox="256 524 386 553"><b>Textured</b></p> 	<p data-bbox="632 493 1209 634">A textured element is when the body of the vessel has been left rough and unfinished. The effect is less regular than spalling. It has a texture similar to a stuccoed house or ceiling.</p> <p data-bbox="632 672 1142 704"><b>Stylistic Genre:</b> None (leave field blank)</p>	<p data-bbox="1383 529 1894 561"><b>Stylistic Genre:</b> None (leave field blank)</p> <p data-bbox="1425 602 1852 634"><b>Related Stylistic Element Data:</b></p> <table border="1" data-bbox="1243 704 2028 850"> <thead> <tr> <th data-bbox="1243 704 1444 777">DecTech</th> <th data-bbox="1444 704 1640 777">Color</th> <th data-bbox="1640 704 1829 777">Sty. Element</th> <th data-bbox="1829 704 2028 777">Motif</th> </tr> </thead> <tbody> <tr> <td data-bbox="1243 777 1444 850">Textured</td> <td data-bbox="1444 777 1640 850">No Applied Color</td> <td data-bbox="1640 777 1829 850">Textured</td> <td data-bbox="1829 777 2028 850">Individual A</td> </tr> </tbody> </table>				DecTech	Color	Sty. Element	Motif	Textured	No Applied Color	Textured	Individual A
DecTech	Color	Sty. Element	Motif										
Textured	No Applied Color	Textured	Individual A										
<p data-bbox="247 959 396 989"><b>Tick Mark</b></p> 	<p data-bbox="632 928 1199 1102">A series of parallel lines incised on the lip of a vessel that is oriented more or less perpendicular to the rim itself. Seen primarily on coarsewares like Colonoware and Native American coarseware.</p> <p data-bbox="632 1175 1142 1208"><b>Stylistic Genre:</b> None (leave field blank)</p>	<p data-bbox="1383 964 1894 997"><b>Stylistic Genre:</b> None (leave field blank)</p> <p data-bbox="1425 1037 1852 1070"><b>Related Stylistic Element Data:</b></p> <table border="1" data-bbox="1243 1141 2028 1287"> <thead> <tr> <th data-bbox="1243 1141 1444 1214">DecTech</th> <th data-bbox="1444 1141 1640 1214">Color</th> <th data-bbox="1640 1141 1829 1214">Sty. Element</th> <th data-bbox="1829 1141 2028 1214">Motif</th> </tr> </thead> <tbody> <tr> <td data-bbox="1243 1214 1444 1287">Incised, free hand</td> <td data-bbox="1444 1214 1640 1287">No Applied Color</td> <td data-bbox="1640 1214 1829 1287">Tick Mark</td> <td data-bbox="1829 1214 2028 1287">Individual, Repeated A</td> </tr> </tbody> </table>				DecTech	Color	Sty. Element	Motif	Incised, free hand	No Applied Color	Tick Mark	Individual, Repeated A
DecTech	Color	Sty. Element	Motif										
Incised, free hand	No Applied Color	Tick Mark	Individual, Repeated A										

**Tile Corner: Fleur-de-lis 01**



A stylized lily composed of three petals bound together near their bases. This element should be specifically used for fleur-de-lis in the corner of Delft tiles. This example is not illustrated in Van Dam and Tichelaar 1984.

**Stylistic Genre:** The genre for this stylistic element depends on a combination of decorative technique, color, and element.

**Stylistic Genre:** Applied Powder Crystals, purple

**Related Stylistic Element Data:**

DecTech	Color	Sty. Element	Motif
Painted, under free hand	Blue, Intense Dark	Tile Corner: Fleur-de-lis 01	Individual A
Painted, under free hand	Purple, Intense Dark	Tile Corner: Fleur-de-lis 01	Individual A
Applied Powder/Crystals	Purple, Intense Dark	Solid	Individual B

**Tile Corner: Flower 01**



This corner element on Delft tiles is characterized by the flower head (center of a flower) with multiple petals radiating from the center. This element is similar to DAACS stylistic element, "Floral, radiating bloom 01".

Flower 01 is similar to Flower style #68 in Van Dam and Tichelaar 1984.

**Stylistic Genre:** The genre for this stylistic element depends on a combination of decorative technique, color, and element.

**Stylistic Genre:** Handpainted Blue

**Related Stylistic Element Data:**

DecTech	Color	Sty. Element	Motif
Painted, under free hand	Blue, Intense Dark	Tile Corner: Flower 01	Individual A

**Tile Corner: Ox-head 01**



A handpainted element exclusively used at the corners of fireplace tiles. It comes in several variations, but this element always consists of three basic features: two mirroring scrolls, a pair of protruding horns on either side of the scrolls, and a spearhead element at the center. This motif usually repeats on each of the tile's four corners.

Ox-head 01 is similar to Ox-head style #57 in Van Dam and Tichelaar 1984.

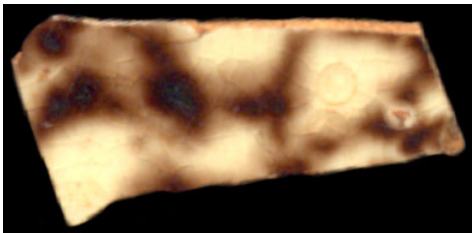
**Stylistic Genre:** The genre for this stylistic element depends on a combination of decorative technique, color, and element.

**Stylistic Genre:** Handpainted Blue

**Related Stylistic Element Data:**

DecTech	Color	Sty. Element	Motif
Painted, under free hand	Purple-Blue, Intense Medium	Tile Corner: Ox-head 01	Individual A, repeated

**Tortoiseshell**



Tortoiseshell decoration consists of a brown speckling under a clear lead-fluxed glaze.

**Stylistic Genre:** None (leave field blank)

**Stylistic Genre:** None (leave field blank)

**Related Stylistic Element Data:**

DecTech	Color	Sty. Element	Motif
Applied Powder/Crystals	Yellow-Red, Muted Dark	Tortoiseshell	Individual A

### Trailed



The simplest of slip decoration, Trailed is used to describe freehand slip decoration where the slip is applied to a vessel in straight and/or curved lines; nothing is done to the slip after it is laid down.

Note that only the color that is trailed onto the vessel is recorded in the Decorative Technique table. The white/yellow slip would be recorded in the Ceramic Interior Surface field and the brown trailed slip is recorded in the decorative technique table as shown on the right.

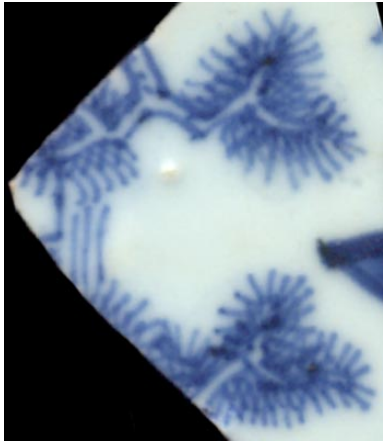
**Stylistic Genre:** Combed/Dotted/Marbleized/Trailed

**Related Stylistic Element Data:**

DecTech	Color	Sty. Element	Motif
Slip	Yellow-Red, Muted Dark	Trailed	Individual A



## Tree



Any element that resembles a tree. The type of tree is unimportant; a palm tree, an evergreen tree, and a deciduous tree would all be a “Tree” stylistic element.

**Stylistic Genre:** The genre for this stylistic element depends on a combination of decorative technique, color, and element.

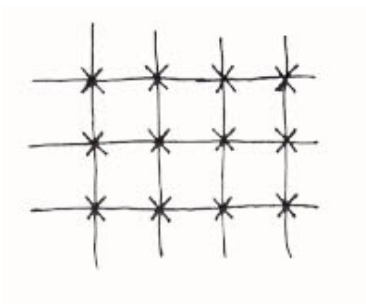


**Stylistic Genre:** Handpainted Blue

**Related Stylistic Element Data:**

DecTech	Color	Sty. Element	Motif
Painted, under free hand	Purple-Blue, Intense Dark	Tree	Individual A

**Trellis 01**



Trellis 1 occurs most often in patches on the vessel, rather than in a band format. It is characterized by the crossed lines that form one or more levels of diamond- or square-shaped lattice. A small X is painted at the intersection of each line. Most often seen on overglaze Chinese porcelain.

**Stylistic Genre:** The genre for this stylistic element depends on a combination of decorative technique, color, and element.

**Stylistic Genre:** Overglaze, handpainted

**Related Stylistic Element Data:**

DecTech	Color	Sty. Element	Motif
Painted, over free hand	Red, Intense Medium	Trellis 01	Individual A

**Trellis 02**



Trellis 2 is characterized by double-lined Xs that have a cross at the intersection of each X. Half-circles connect each triangular segment created by the double-lined Xs.

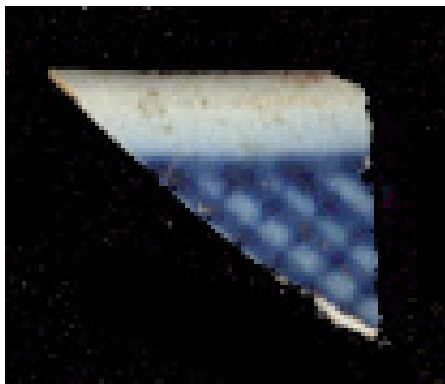
**Stylistic Genre:** The genre for this stylistic element depends on a combination of decorative technique, color, and element.

**Stylistic Genre:** Handpainted Blue

**Related Stylistic Element Data:**

DecTech	Color	Sty. Element	Motif
Painted, under free hand	Purple-Blue, Intense Dark	Trellis 02	Individual A

**Trellis 03**



Series of alternating lines that cross each other at an angle. The decorative technique for this stylistic element can be either molded (as seen in the first example) or hand painted (seen below).

**Stylistic Genre:** The genre for this stylistic element depends on a combination of decorative technique, color, and element

**Stylistic Genre:** Dot/Diaper/Basketweave

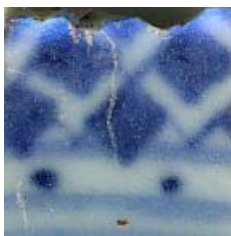
**Related Stylistic Element Data:**

DecTech	Color	Sty. Element	Motif
Molded	No Applied Color	Trellis 03	Individual A

**Stylistic Genre:** Handpainted Blue

DecTech	Color	Sty. Element	Motif
Painted, under free hand	Purple-Blue, Intense Dark	Trellis 03	Individual A

**Trellis, unid.**



This classification should be used when small, unidentifiable portions of a Trellis are present on a sherd. It is often the case that the decoration can be identified as a Trellis but there is not enough present to name the exact Trellis. "Trellis, unid." should be used in these cases.

**Stylistic Genre:** The genre for this stylistic element depends on a combination of decorative technique, color, and element.

**Trellis Band 01**



A combination of alternating lines and dots define Trellis Band 01. Three vertical, parallel lines bound both sides of seven dots or ticks. Six of the dots/ticks form a circle with the seventh in the center of that circle. This pattern of lines and dot circles continues in a band around the vessel.

**Stylistic Genre:** The genre for this stylistic element depends on a combination of decorative technique, color, and element.

**Stylistic Genre:** Handpainted Blue

**Related Stylistic Element Data:**

DecTech	Color	Sty. Element	Motif
Painted, under free hand	Purple-Blue, Intense Dark	Trellis Band 01	Individual A

**Trellis Band 02**



This Trellis Band is characterized by intersecting parallel lines that are most often arranged on a diagonal to form a diamond pattern. A small X or cross is painted at the intersection of each line. The background of the band can be shaded with a darker blue or it can be left blank.

**Stylistic Genre:** The genre for this stylistic element depends on a combination of decorative technique, color, and element.

**Stylistic Genre:** Handpainted Blue

**Related Stylistic Element Data:**

DecTech	Color	Sty. Element	Motif
Painted, under free hand	Purple-Blue, Intense Dark	Trellis Band 02	Individual A

**Trellis Band 03**



Alternating single and double-lined Xs bounded by two to four horizontal bands. This band can have a solid, colored background. If the band has a colored background, record the color of the background; otherwise, simply record the color of the Xs.

**Stylistic Genre:** The genre for this stylistic element depends on a combination of decorative technique, color, and element.

**Stylistic Genre:** Handpainted Blue

**Related Stylistic Element Data:**

DecTech	Color	Sty. Element	Motif
Painted, under free hand	Purple-Blue, Intense Dark	Trellis Band 03	Individual A

**Trellis Band 04**



This detailed trellis band is characterized by repeating double-lined Xs that have a cross where the double-lined Xs meet. There are two short ticks at the upper and lower junctions of the double-crossed Xs. This band is also seen with triple-lined Xs.

**Stylistic Genre:** The genre for this stylistic element depends on a combination of decorative technique, color, and element.

**Stylistic Genre:** Handpainted Blue

**Related Stylistic Element Data:**

DecTech	Color	Sty. Element	Motif
Painted, under free hand	Purple-Blue, Intense Dark	Trellis Band 04	Individual A

**Trellis Band 05**



Repeating double-lined Xs with dot decoration in the interstices characterize this band. A single dot is painted in the upper and lower open triangular spaces made by the Xs. Groups of four dots fill the open diamond-shaped space. This band is identical to Trellis Band 08 except that it has dashes instead of dots.

**Stylistic Genre:** The genre for this stylistic element depends on a combination of decorative technique, color, and element.

**Stylistic Genre:** Handpainted Blue

**Related Stylistic Element Data:**

DecTech	Color	Sty. Element	Motif
Painted, under free hand	Purple-Blue, Intense Dark	Trellis Band 05	Individual A

**Trellis Band 06**



Intersecting parallel lines arranged on a diagonal to form a crosshatching pattern. Small ticks project downward into each diamond-shaped cell.

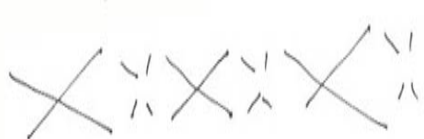
**Stylistic Genre:** The genre for this stylistic element depends on a combination of decorative technique, color, and element.

**Stylistic Genre:** Handpainted Blue

**Related Stylistic Element Data:**

DecTech	Color	Sty. Element	Motif
Painted, under free hand	Purple-Blue, Intense Dark	Trellis Band 06	Individual A

**Trellis Band 07**



Solid-lined Xs that alternate with smaller, nonintersecting dashed Xs define Trellis Band 07. This band is identical to Trellis Band 12 except that it has double-lined Xs.

**Stylistic Genre:** The genre for this stylistic element depends on a combination of decorative technique, color, and element.

**Stylistic Genre:** Handpainted Blue

**Related Stylistic Element Data:**

DecTech	Color	Sty. Element	Motif
Painted, under free hand	Purple-Blue, Intense Medium	Trellis Band 07	Individual A

**Trellis Band 08**



Repeating double-lined Xs with dash decoration in the interstices characterize this band. A single dash is painted in the upper and lower open triangular spaces made by the Xs while groups of four dashes (forming either an "X" or a cross) fill the open diamond-shaped spaces. This band is identical to Trellis Band 05 except that it has dots instead of dashes.

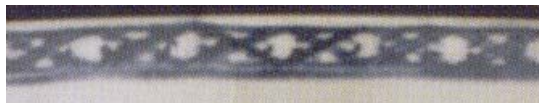
**Stylistic Genre:** The genre for this stylistic element depends on a combination of decorative technique, color, and element.

**Stylistic Genre:** Handpainted, blue

**Related Stylistic Element Data:**

DecTech	Color	Sty. Element	Motif
Painted, under free hand	Purple-Blue, Intense Medium	Trellis Band 08	Individual A

**Trellis Band 09**



The basis of this band is the classic crossed lines that form one or more levels of diamond-shaped lattice. The defining characteristic of this band is the small circle or square painted around each intersection of crossed lines.

**Stylistic Genre:** The genre for this stylistic element depends on a combination of decorative technique, color, and element.

**Stylistic Genre:** Handpainted Blue

**Related Stylistic Element Data:**

DecTech	Color	Sty. Element	Motif
Painted, under free hand	Purple-Blue, Intense Dark	Trellis Band 09	Individual A
Painted, under free hand	Purple-Blue, Muted Medium	Trellis Band 09	Individual A

**Trellis Band 10**



Four oblong lobes forming an X, with half-circles in the triangular spaces at the top and bottom of the X. In the diamond-shaped cell between the oblong, lobed Xs is a normal, single-lined X. A variant of this band has half-circles on either side of the X in addition to the top and bottom (see bottom image).

**Stylistic Genre:** The genre for this stylistic element depends on a combination of decorative technique, color, and element.

**Stylistic Genre:** Handpainted Blue

**Related Stylistic Element Data:**

DecTech	Color	Sty. Element	Motif
Painted, under free hand	Purple-Blue, Muted Medium	Trellis Band 10	Individual A



### Trellis Band 11



Trellis Band 11 is characterized by flowers with four petals that are oriented in such a way that the petals create a diamond pattern. This band is seen both with and without dots and with and without a solid background. A taller version of this band can be seen, with the top half of the band repeated under the main band, i.e., a one and a half sized tall trellis.

**Stylistic Genre:** The genre for this stylistic element depends on a combination of decorative technique, color, and element.

**Stylistic Genre:** Handpainted Blue

**Related Stylistic Element Data:**

DecTech	Color	Sty. Element	Motif
Painted, under free hand	Purple-Blue, Muted Dark	Trellis Band 11	Individual A

**Trellis Band 12**



Double-line solid Xs that alternate with smaller dashed Xs define Trellis Band 12. This band is very similar to Trellis Band 07 except that this band has double-lined solid Xs instead of single-lined Xs.

**Stylistic Genre:** The genre for this stylistic element depends on a combination of decorative technique, color, and element.

**Stylistic Genre:** Handpainted Blue

**Related Stylistic Element Data:**

DecTech	Color	Sty. Element	Motif
Painted, under free hand	Purple-Blue, Intense Dark	Trellis Band 12	Individual A

**Trellis Band 13**



Single Xs with crosshatching in between.

**Stylistic Genre:** The genre for this stylistic element depends on a combination of decorative technique, color, and element.

**Stylistic Genre:** Handpainted Blue

**Related Stylistic Element Data:**

DecTech	Color	Sty. Element	Motif
Painted, under free hand	Purple-Blue, Muted Dark	Trellis Band 13	Individual A
Painted, under free hand	Purple-Blue, Intense Dark	Trellis Band 13	Individual A

**Trellis Band 14**



Repeating double- or triple-lined Xs with dash decoration in the interstices between, above, and below the Xs.

**Stylistic Genre:** The genre for this stylistic element depends on a combination of decorative technique, color, and element.

**Stylistic Genre:** Handpainted Blue

**Related Stylistic Element Data:**

DecTech	Color	Sty. Element	Motif
Painted, under free hand	Purple-Blue, Intense Dark	Trellis Band 14	Adjacent Combination A

**Trellis Band 15**



A band of squares broken into quadrants. Double-lined Xs are circumscribed by these quartered squares.

**Stylistic Genre:** The genre for this stylistic element depends on a combination of decorative technique, color, and element.

**Stylistic Genre:** Handpainted Blue

**Related Stylistic Element Data:**

DecTech	Color	Sty. Element	Motif
Painted, under free hand	Purple-Blue, Intense Dark	Trellis Band 15	Individual A

**Trellis Band 16**



Trellis Band 16 is characterized by crossed double lines that form a repeating diamond pattern. Inside of each diamond “cell” is a single lined X. Another single lined X is inside the top triangle formed by the diamonds.

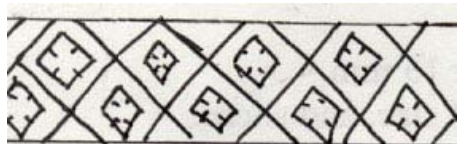
**Stylistic Genre:** The genre for this stylistic element depends on a combination of decorative technique, color, and element.

**Stylistic Genre:** Handpainted Blue

**Related Stylistic Element Data:**

DecTech	Color	Sty. Element	Motif
Painted, under free hand	Purple-Blue, Intense Dark	Trellis Band 16	Individual A

**Trellis Band 17**



This trellis band is characterized by the classic trellis: single crossed lines that form a diamond shaped pattern. Inside the larger diamonds sits small diamonds that contain four short diagonal lines.

**Stylistic Genre:** The genre for this stylistic element depends on a combination of decorative technique, color, and element.

**Stylistic Genre:** Handpainted Blue

**Related Stylistic Element Data:**

DecTech	Color	Sty. Element	Motif
Painted, under free hand	Purple-Blue, Intense Dark	Trellis Band 17	Individual A

**Trellis Band 18**



Composed of concentric Xs or crosshatching with a disconnected X inside the diamond-shaped cells between the Xs.

**Stylistic Genre:** The genre for this stylistic element depends on a combination of decorative technique, color, and element.

**Stylistic Genre:** Handpainted Blue

**Related Stylistic Element Data:**

DecTech	Color	Sty. Element	Motif
Painted, under free hand	Purple-Blue, Intense Dark	Trellis Band 18	Individual A



**Trellis Band 19**



Two connected rows of a lobed X's with a cluster of four hatch marks in the open spaces.

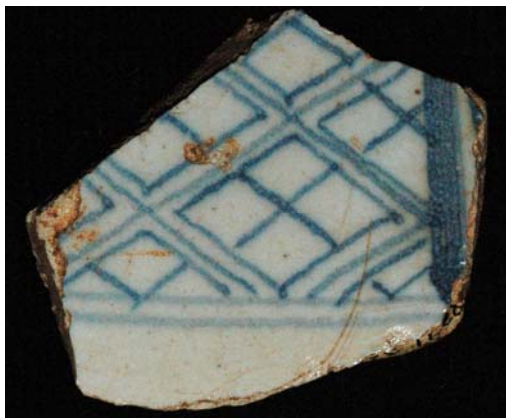
**Stylistic Genre:** The genre for this stylistic element depends on a combination of decorative technique, color, and element.

**Stylistic Genre:** Handpainted Blue

**Related Stylistic Element Data:**

DecTech	Color	Sty. Element	Motif
Painted, under free hand	Purple-Blue, Intense Dark	Trellis Band 19	Individual A

**Trellis Band 20**



This band is similar to Trellis Band 18. It consists of concentric Xs or crosshatching with a connected X (Trellis Band 18 has a disconnected X) inside the diamond-shaped cells between the Xs.

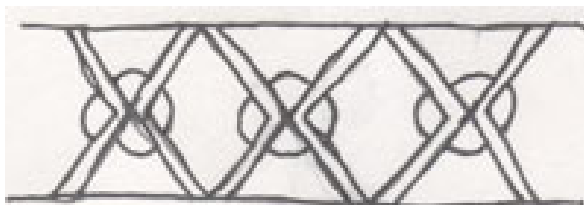
**Stylistic Genre:** The genre for this stylistic element depends on a combination of decorative technique, color, and element.

**Stylistic Genre:** Handpainted Blue

**Related Stylistic Element Data:**

DecTech	Color	Sty. Element	Motif
Painted, under free hand	Purple-Blue, Intense Dark	Trellis Band 20	Individual A

**Trellis Band 21**



This band consists of a series of concentric Xs or crosshatching with an interrupted circle behind each X (so that it is divided into quarters by the X).

**Stylistic Genre:** The genre for this stylistic element depends on a combination of decorative technique, color, and element.

**Stylistic Genre:** Handpainted Blue

**Related Stylistic Element Data:**

DecTech	Color	Sty. Element	Motif
Painted, under free hand	Purple-Blue, Intense Dark	Trellis Band 21	Individual A

**Trellis Band 23**



A series of crossed double lines forming a lattice pattern.

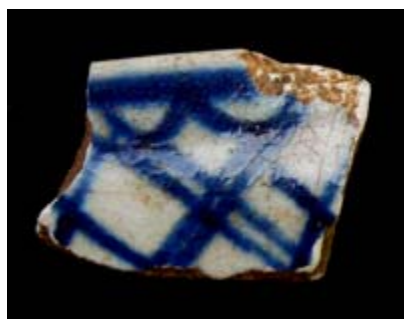
**Stylistic Genre:** The genre for this stylistic element depends on a combination of decorative technique, color, and element.

**Stylistic Genre:** Handpainted Blue

**Related Stylistic Element Data:**

DecTech	Color	Sty. Element	Motif
Painted, under free hand	Purple-Blue, Intense Dark	Trellis Band 23	Individual A

**Trellis Band 24**



This band consists of a series of connected alternating single-line Xs and double line Xs. The Xs are attached to a single band, above, with open half-circles.

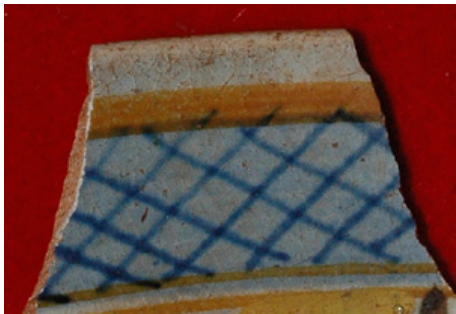
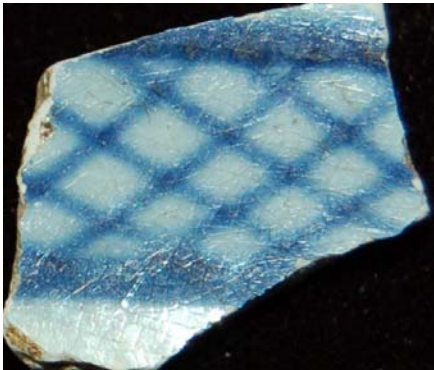
**Stylistic Genre:** The genre for this stylistic element depends on a combination of decorative technique, color, and element.

**Stylistic Genre:** Handpainted Blue

**Related Stylistic Element Data:**

DecTech	Color	Sty. Element	Motif
Painted, under free hand	Purple-Blue, Intense Dark	Trellis Band 24	Individual A

**Trellis Band 25**



A series of single lines, forming a lattice pattern. Lines than bound this band may vary in color.

**Stylistic Genre:** The genre for this stylistic element depends on a combination of decorative technique, color, and element.

**Stylistic Genre:** Handpainted Blue

**Related Stylistic Element Data:**


DecTech	Color	Sty. Element	Motif
Painted, under free hand	Purple-Blue, Intense Dark	Trellis Band 25	Individual A

DecTech	Color	Sty. Element	Motif
Painted, under free hand	Purple-Blue, Intense Dark	Trellis Band 25	Individual A
Painted, under free hand	Yellow, Intense Medium	Trellis Band 25	Individual A



**Trellis Band 26**



This band is similar to Trellis Band 2  except it is only half of the band. Trellis Band 26 appears as a zigzag line with half crosses at the vertices of the zigzags. It can either have a painted background as seen in this example, or it can have no background.

**Stylistic Genre:** The genre for this stylistic element depends on a combination of decorative technique, color, and element.

**Stylistic Genre:** Handpainted Blue

**Related Stylistic Element Data:**

DecTech	Color	Sty. Element	Motif
Painted, under free hand	Purple-Blue, Intense Dark	Trellis Band 26	Stacked Combination A
Painted, under free hand	Purple-Blue, Muted Medium	Trellis Band 26	Stacked Combination A
Painted, under free hand	Purple-Blue, Intense Dark	Geometric Band 11	Stacked Combination A
Painted, under free hand	Purple-blue, Muted Medium	Geometric Band 11	Stacked Combination A

**Trellis Band 27**



This band is similar to Trellis Band 14&15. Repeating double-Xs with single Xs in the interstices between double-Xs.

**Stylistic Genre:** Handpainted Blue

**Stylistic Genre:** Handpainted Blue

**Related Stylistic Element Data:**

DecTech	Color	Sty. Element	Motif
Painted, under free hand	Purple-Blue, Intense Dark	Trellis Band 27	Individual A

**Trellis Band 29**



Repeating double-lined Xs with dot decoration in the interstices characterize this band. Groups of four dots in a diamond pattern fill the open diamond-shaped space. It is banded by a single line at the top and a double line at the bottom.

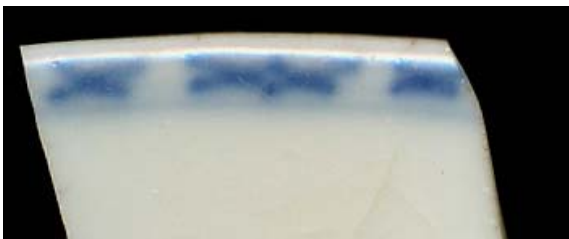
**Stylistic Genre:** The genre for this stylistic element depends on a combination of decorative technique, color, and element

**Stylistic Genre:** Overglaze, handpainted

**Related Stylistic Element Data:**

DecTech	Color	Sty. Element	Motif
Painted, over free hand	Red, Muted Dark	Trellis Band 29	Individual A

**Trellis Band 30**



This band consists of evenly spaced single Xs. A variant of this band consists of an additional X overlapping one of the alternating Xs.

**Stylistic Genre:** The genre for this stylistic element depends on a combination of decorative technique, color, and element

**Stylistic Genre:** Handpainted Blue

**Related Stylistic Element Data:**

DecTech	Color	Sty. Element	Motif
Painted, under free hand	Purple-Blue, Muted Dark	Trellis Band 30	Individual A

**Trellis Band 31**



This band consists of two different elements combined to create a trellis. Oblong lobes form a zigzag pattern. Within each triangle formed by the lobes are two short ticks oriented perpendicular to the lobes. These ticks may not meet to form a point. The trellis may or may not be bounded by solid lines

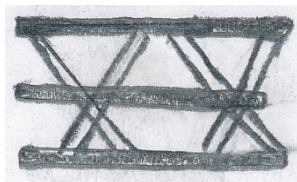
**Stylistic Genre:** The genre for this stylistic element depends on a combination of decorative technique, color, and element.

**Stylistic Genre:** Overglaze, handpainted

**Related Stylistic Element Data:**

DecTech	Color	Sty. Element	Motif
Painted, over free hand	Red, Intense Medium	Trellis Band 31	Individual A
Painted, under free hand	Purple-Blue, Intense Dark	Trellis Band 31	Individual A

**Trellis Band 32**



A band of double-X's bisected by a center horizontal line.

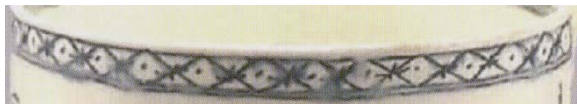
**Stylistic Genre:** Handpainted, Blue

**Stylistic Genre:** Handpainted Blue

**Related Stylistic Element Data:**

DecTech	Color	Sty. Element	Motif
Painted under, free hand	Purple-Blue, Intense Dark	Trellis Band 32	Individual A

**Trellis Band 33**



A band composed of a single row of X's with a cross in each X, creating an asterisk. A single dot is located in the middle of the diamond negative space between the X's.

**Stylistic Genre:** Handpainted, Blue

**Stylistic Genre:** Handpainted Blue

**Related Stylistic Element Data:**

DecTech	Color	Sty. Element	Motif
Painted under, free hand	Purple-Blue, Intense Dark	Trellis Band 33	Individual A

**Trellis Band 34**



Very similar to Trellis Band 14: Repeating double- or triple-lined Xs with dash decoration in the interstices between, above, and below the Xs. The difference with this band is the addition of a single line cross on each double X.

**Stylistic Genre:** Handpainted, Blue

**Stylistic Genre:** Handpainted Blue

**Related Stylistic Element Data:**

DecTech	Color	Sty. Element	Motif
Painted under, free hand	Purple-Blue, Intense Dark	Trellis Band 34	Individual A

**Trellis Band 35**



Similar to Trellis Band 18: Double lined X's form a single row. A disconnected X is inside the diamond-shaped cells between the Xs. This band has the addition of a vertical line at the junction of each X.

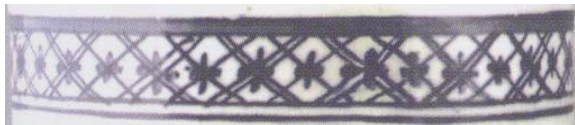
**Stylistic Genre:** Handpainted, Blue

**Stylistic Genre:** Handpainted Blue

**Related Stylistic Element Data:**

DecTech	Color	Sty. Element	Motif
Painted under, free hand	Purple-Blue, Intense Dark	Trellis Band 35	Individual A

**Trellis Band 36**



Double lined X's alternate with single lined X's. A thick, single lined cross is painted on all X junctions.

**Stylistic Genre:** Handpainted, Blue

**Stylistic Genre:** Handpainted Blue

**Related Stylistic Element Data:**

DecTech	Color	Sty. Element	Motif
Painted under, free hand	Purple-Blue, Intense Dark	Trellis Band 36	Individual A

**Trellis Band 37**



Double lined X's create a single-row band. A single lined cross is painted at the junction of each cross.

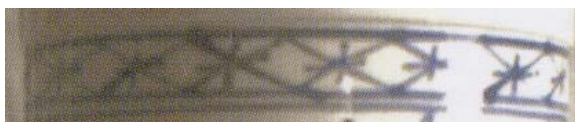
**Stylistic Genre:** Handpainted, Blue

**Stylistic Genre:** Handpainted Blue

**Related Stylistic Element Data:**

DecTech	Color	Sty. Element	Motif
Painted under, free hand	Purple-Blue, Intense Dark	Trellis Band 37	Individual A

**Trellis Band 38**



Similar to Trellis Band 37, but with single lined X's instead of double: Single lined X's create a single-row band. A single lined cross is painted at the junction of each cross, creating an asterisk.

**Stylistic Genre:** Handpainted, Blue

**Stylistic Genre:** Handpainted Blue

**Related Stylistic Element Data:**

DecTech	Color	Sty. Element	Motif
Painted under, free hand	Purple-Blue, Intense Dark	Trellis Band 38	Individual A

**Trellis Band 39**



A single row of double lined X's with open circles in the diamond shaped spaces between X's.

**Stylistic Genre:** Handpainted, Blue

**Stylistic Genre:** Handpainted Blue

**Related Stylistic Element Data:**

DecTech	Color	Sty. Element	Motif
Painted under, free hand	Purple-Blue, Intense Dark	Trellis Band 39	Individual A

**Trellis Band 40**



The blurry effect in this example is the result of the paint running. Triple lined X's create a single trellis row. Curved four-sided shapes are painted in the center of each X and half circles are painted at the top and bottom of the band, in between the X's.

**Stylistic Genre:** Handpainted, Blue

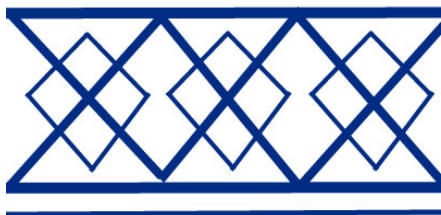
**Stylistic Genre:** Handpainted Blue

**Related Stylistic Element Data:**

DecTech	Color	Sty. Element	Motif
Painted under, free hand	Purple-Blue, Intense Dark	Trellis Band 40	Individual A



**Trellis Band 41**



A single row of X's with slightly smaller diamonds transposed over each X junction.

**Stylistic Genre:** Handpainted, Blue

**Stylistic Genre:** Handpainted Blue

**Related Stylistic Element Data:**

DecTech	Color	Sty. Element	Motif
Painted under, free hand	Purple-Blue, Muted Dark	Trellis Band 41	Individual A

**Trellis Band 42**



Very similar to Trellis Band 33: A band composed of a single row of X's with a cross in each X, creating an asterisk. A single dot is located in the middle of the diamond negative space between the X's. This band the addition of three vertical dots down the midline of each diamond: one at the top vertex, one in the center and one at the bottom vertex.

**Stylistic Genre:** Handpainted, Blue

**Stylistic Genre:** Handpainted Blue

**Related Stylistic Element Data:**

DecTech	Color	Sty. Element	Motif
Painted under, free hand	Purple-Blue, Muted Dark	Trellis Band 42	Individual A

**Trellis Band 43**



Very similar to Trellis Band 18: Composed of concentric Xs or crosshatching with a disconnected X inside the diamond-shaped cells between the Xs. The difference between the two is that the X's on this band are composed of double lines that overlap one another, as opposed to the X's that are not overlapping in Trellis Band 18, thus creating a small diamond in the center of each of those.

**Stylistic Genre:** Handpainted, Blue

**Stylistic Genre:** Handpainted Blue

**Related Stylistic Element Data:**

DecTech	Color	Sty. Element	Motif
Painted under, free hand	Purple-Blue, Muted Dark	Trellis Band 43	Individual A

**Trellis Band 45**



Double lined X's form the central part of the central element of the band. Smaller single lined diamonds are located in the spaces between X's. Each diamond has a dot in the center. Half-circles are painted above and below the cross bars of the X's.

**Stylistic Genre:** Handpainted, Blue

**Stylistic Genre:** Handpainted Blue

**Related Stylistic Element Data:**

DecTech	Color	Sty. Element	Motif
Painted under, free hand	Purple-Blue, Muted Dark	Trellis Band 45	Individual A





**Trellis Band 46**



This could be thought of as “half of a trellis band”. Triple lined V’s instead of X’s form the central element of the band. Single lined hatch marks form V’s in the negative spaces between.

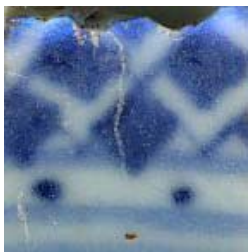
**Stylistic Genre:** Handpainted, Blue

**Stylistic Genre:** Handpainted Blue

**Related Stylistic Element Data:**

DecTech	Color	Sty. Element	Motif
Painted under, free hand	Purple-Blue, Intense Dark	Trellis Band 46	Individual A

**Trellis Band 47**



This element has Trellis Band 25 as the base, with a single dot at the point where each crossed line meets. Note that in the example, the dot appears to be at the intersection of the crosshatching. A variation shows a diamond rather than a dot at the points of intersection. A second variation shows a polychrome handpainted version of this element with the dot located in middle of the negative space between lines. Here the band is painted adjacent to other elements.

**Stylistic Genre:** The genre and motif for this stylistic element depends on a combination of decorative technique, color, and element.

**Stylistic Genre:** Handpainted Blue

**Related Stylistic Element Data:**

DecTech	Color	Sty. Element	Motif
Painted, under free hand	Purple-Blue, Muted Dark	Trellis Band 47	Individual A
Painted, under free hand	Purple-Blue, Intense Dark	Trellis Band 47	Individual A

**Stylistic Genre:** Polychrome, other

**Related Stylistic Element Data:**

DecTech	Color	Sty. Element	Motif
Painted, under free hand	Purple-Blue, Muted Dark	Trellis Band 47	Adjacent Combination A
Painted, under free hand	Purple-Blue, Muted Light	Trellis Band 47	Adjacent Combination A

**Trellis Band 48**



This band is similar to Trellis Band 27. Except this band is composed of a single X alternating with double Xs and triple Xs.

**Stylistic Genre:** The genre for this stylistic element depends on a combination of decorative technique, color, and element.

**Stylistic Genre:** Handpainted Blue

**Related Stylistic Element Data:**

DecTech	Color	Sty. Element	Motif
Painted under, free hand	Purple-Blue, Intense Dark	Trellis Band 48	Individual A

**Trellis Band 49**



This band has elements from both Trellis Bands 46 and 47. The central element of the band consists of alternating Vs. Dots float in the negative spaces above and below the Vs.

**Stylistic Genre:** The genre for this stylistic element depends on a combination of decorative technique, color, and element.

**Stylistic Genre:** Handpainted Blue

**Related Stylistic Element Data:**

DecTech	Color	Sty. Element	Motif
Painted under, free hand	Purple-Blue, Intense Dark	Trellis Band 49	Individual A

**Trellis Band, unid.**

This classification should be used when small, unidentifiable portions of a Trellis band are present on a sherd. It is often the case that the decoration can be identified as a Trellis band but there is not enough present to name the exact Trellis band. Trellis Band, unid. should be used in these cases.

**Stylistic Genre:** The genre for this stylistic element depends on a combination of decorative technique, color, and element.

**Twig**



This is an element seen on factory made slipware, created with a multi-chambered slip cup. The “twigs” are made by dragging the quills in a series of connected opposing motions. Seen oriented both horizontally and vertically.

**Stylistic Genre:** Slipware, factory made

**Related Stylistic Element Data:**

DecTech	Color	Sty. Element	Motif
Slip	Yellow-Red, Muted Dark	Twig	Individual A
Slip	Blue, Muted Light	Twig	Individual A
Slip	N9/	Twig	Individual A

**Umbrella**



The umbrella stylistic element is used to describe any painted or molded element that resembles an umbrella. Seen most often on Chinoiserie style painted pearlwares.

**Stylistic Genre:** The genre for this stylistic element depends on a combination of decorative technique, color, and element.

**Stylistic Genre:** Polychrome, warm

**Related Stylistic Element Data:**

<b>DecTech</b>	<b>Color</b>	<b>Sty. Element</b>	<b>Motif</b>
Painted, under free hand	Yellow-Red, Intense Medium	Umbrella	Ver A
Painted, under free hand	Yellow, Muted Medium	Umbrella	Individual A
Painted, under free hand	Purple-Blue, Muted Medium	Umbrella	Individual A

**Unidentified**

Use the term “Unidentified” when the portion of the stylistic element is completely unidentifiable. This means that you may have a sherd with decoration but the decoration is so small or obscure that you are unable to classify it with any certainty. For example, if you know that the element you have is a Trellis Band but you don’t know which Trellis Band it is, use Trellis Band, unid; do not use “Unidentified.”

If you use “Unidentified,” and you think the decoration might be identifiable in the long-run, i.e. we might see a sherd with more of the decoration at a later date, then image the sherd and link it to the artifact record.

**Stylistic Genre:** The genre for this stylistic element depends on a combination of decorative technique, color, and element.

**Vase**



Any depiction of a vase. Vase does not need to appear to be ceramic. It must be oblong in shape and holding flowers or other objects. Vase may or may not include a stand, as shown here.

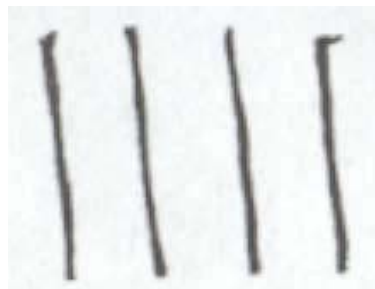
**Stylistic Genre:** The genre for this stylistic element depends on a combination of decorative technique, color, and element.

**Stylistic Genre:** Overglaze, handpainted  
**Pattern Name:** Hundred Antiquities

**Related Stylistic Element Data:**

DecTech	Color	Sty. Element	Motif
Painted, over free hand	Gilt	Vases	Individual A
Painted, over free hand	Red, Intense Medium	Vase	Individual A
Painted, over free hand	Neutrals Dark	Vase	Individual A

**Vertical Lines**



Any series of vertical lines or bands. Vertical lines may be used in combination with other elements such as being painted on the inside of molded flutes.

**Stylistic Genre:** The genre for this stylistic element depends on a combination of decorative technique, color, and element.

**Stylistic Genre:** Overglaze, handpainted

**Related Stylistic Element Data:**

DecTech	Color	Sty. Element	Motif
Painted, over free hand	Gilt	Vertical Lines	Individual A

**Stylistic Genre:** None (leave field blank)

**Related Stylistic Element Data:**

DecTech	Color	Sty. Element	Motif
Molded	No Applied Color	Vertical Lines	Individual A

**Vessel, ceramic**



This stylistic element should be used for describing images of ceramic vessels on ceramics, which should be identified by vessel style and decoration. As this example shows, this is a ceramic vessel holding a pineapple. This stylistic element is not only seen on polychrome painted pearlwares but also on wares such as Black Basalt.

**Stylistic Genre:** The genre for this stylistic element depends on a combination of decorative technique, color, and element.

**Stylistic Genre:** Polychrome, warm

**Related Stylistic Element Data:**

<b>DecTech</b>	<b>Color</b>	<b>Sty. Element</b>	<b>Motif</b>
Painted, under free hand	Yellow-Red, Muted Dark	Vessel, ceramic	Individual A
Painted, under free hand	Yellow-Red, Intense Medium	Vessel, ceramic	Individual A
Painted, under free hand	Red/Yellow-Red, Muted Dark	Fruit	Individual A
Painted, under free hand	Yellow-Red, Intense Medium	Fruit	Individual A
Painted, under free hand	Green-Yellow, Muted Medium	Botanical, unidentified	Individual A
Painted, under free hand	Red/Yellow-Red, Muted Dark	Botanical, unidentified	Individual A

**Wall**



Wall elements are most often seen on Chinoiserie style Chinese porcelains. They were often painted around houses. This example depicts a masonry wall with either larger masonry pieces or windows along the top of the wall.

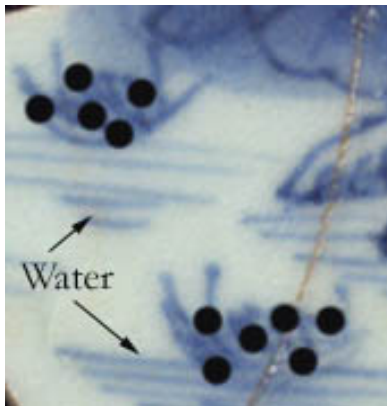
**Stylistic Genre:** The genre for this stylistic element depends on a combination of decorative technique, color, and element.

**Stylistic Genre:** Handpainted Blue

**Related Stylistic Element Data:**

DecTech	Color	Sty. Element	Motif
Painted, under free hand	Purple-Blue, Intense Dark	Wall	Individual A

**Water, body of**



A range of shading techniques characterizes bodies of water. Identifying water usually includes other images within the scene. Water is usually represented by lines of varying thicknesses that give emphasis to objects on the water or land protruding into the water.

**Stylistic Genre:** The genre for this stylistic element depends on a combination of decorative technique, color, and element.

**Stylistic Genre:** Handpainted Blue

**Related Stylistic Element Data:**

DecTech	Color	Sty. Element	Motif
Painted, under free hand	Purple-Blue, Intense Dark	Water, body of	Scene Combination A
Painted, under free hand	Purple-Blue, Intense Dark	Boat	Scene Combination A
Painted, under free hand	Purple-Blue, Intense Dark	Landscape/Hills	Scene Combination A



**Water Buffalo**



Depiction of a water buffalo, often found on Chinese porcelain. Often have large curved horns. Associated with “Boy on Buffalo” pattern.

Note: If unable to determine whether animal is a water buffalo, use “Animal, unid.”

**Stylistic Genre:** The genre for this stylistic element depends on a combination of decorative technique, color, and element.

**Stylistic Genre:** Overglaze, handpainted  
**Pattern Name:** Boy on Buffalo

**Related Stylistic Element Data:**

DecTech	Color	Sty. Element	Motif
Painted, over free hand	Red, Intense Medium	Water Buffalo	Individual A
Painted, over free hand	Neutrals, Dark	Water Buffalo	Individual A

**Wavy Band 01 is not an identified band**

**Wavy Band 02**



A single wavy band of dots. The dot size can vary. Seen most often on overglaze porcelain.

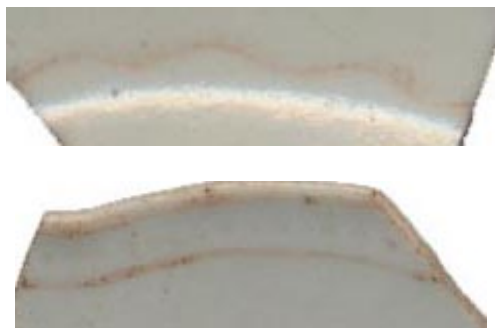
**Stylistic Genre:** The genre for this stylistic element depends on a combination of decorative technique, color, and element.

**Stylistic Genre:** Overglaze, handpainted

**Related Stylistic Element Data:**

DecTech	Color	Sty. Element	Motif
Painted, over free hand	Yellow, Muted Medium	Wavy Band 02	Individual A

**Wavy Band 03**



A single, solid wavy band. This band can have both large and small undulating curves. Seen most often on overglaze porcelain.

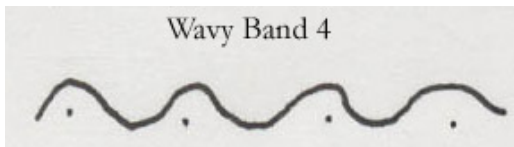
**Stylistic Genre:** The genre for this stylistic element depends on a combination of decorative technique, color, and element.

**Stylistic Genre:** Overglaze, handpainted

**Related Stylistic Element Data:**

DecTech	Color	Sty. Element	Motif
Painted, over free hand	Red, Intense Medium	Wavy Band 03	Individual A

**Wavy Band 04**



A solid wavy line that has dots on one side of the line characterizes Wavy Band 04.

**Stylistic Genre:** The genre for this stylistic element depends on a combination of decorative technique, color, and element.

**Stylistic Genre:** Overglaze, handpainted

**Related Stylistic Element Data:**

DecTech	Color	Sty. Element	Motif
Painted, over free hand	Unidentifiable	Wavy Band 04	Individual A

**Wavy Band 06**



This band is characterized by small, repeated waves or small scallops. Seen primarily on stonewares.

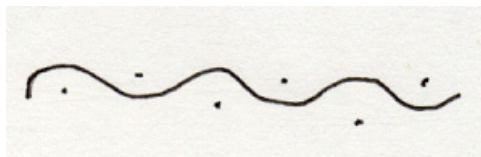
**Stylistic Genre:** None (leave field blank)

**Stylistic Genre:** None (leave field blank)

**Related Stylistic Element Data:**

DecTech	Color	Sty. Element	Motif
Rouletted	No Applied Color	Wavy Band 06	Individual A

**Wavy Band 07**



A solid wavy line with dots on the inside of each curve characterizes Wavy Band 07. These dots are found on both sides of the wavy line.

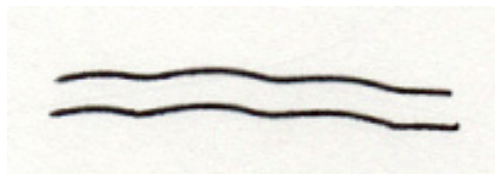
**Stylistic Genre:** The genre for this stylistic element depends on a combination of decorative technique, color, and element.

**Stylistic Genre:** Polychrome, warm

**Related Stylistic Element Data:**

DecTech	Color	Sty. Element	Motif
Painted, under free hand	Yellow-Red, Muted Medium	Wavy Band 07	Individual A
Painted, under free hand	Purple-Blue, Intense Dark	Wavy Band 07	Individual A

**Wavy Band 08**



Wavy Band 08 is characterized by two, solid, wavy lines that run parallel. Seen most often on over-glaze porcelain.

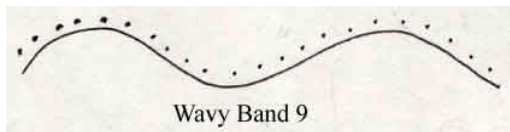
**Stylistic Genre:** The genre for this stylistic element depends on a combination of decorative technique, color, and element.

**Stylistic Genre:** Overglaze, handpainted

**Related Stylistic Element Data:**

DecTech	Color	Sty. Element	Motif
Painted, over free hand	Unidentifiable	Wavy Band 08	Individual A

**Wavy Band 09**



Two parallel wavy lines running around the vessel. One is solid; the other is made up of dots. A solid wavy line with dots on one-side of the line. Seen most often on overglaze porcelain.

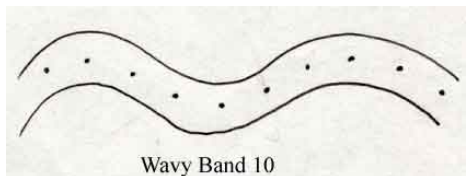
**Stylistic Genre:** The genre for this stylistic element depends on a combination of decorative technique, color, and element.

**Stylistic Genre:** Overglaze, handpainted

**Related Stylistic Element Data:**

DecTech	Color	Sty. Element	Motif
Painted, over free hand	Unidentifiable	Wavy Band 09	Individual A

**Wavy Band 10**



A single band of wavy dots enclosed by two, parallel wavy lines. Seen most often on overglaze Chinese porcelain.

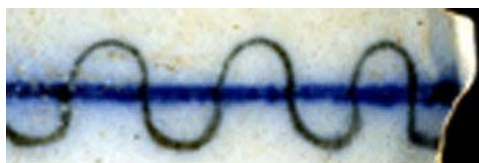
**Stylistic Genre:** The genre for this stylistic element depends on a combination of decorative technique, color, and element.

**Stylistic Genre:** Overglaze, handpainted

**Related Stylistic Element Data:**

DecTech	Color	Sty. Element	Motif
Painted, over free hand	Unidentifiable	Wavy Band 10	Individual A

**Wavy Band 11**



This element consists of a single straight line with a wavy line overlapping it.

**Stylistic Genre:** The genre for this stylistic element depends on a combination of decorative technique, color, and element.

**Stylistic Genre:** Handpainted Blue

**Related Stylistic Element Data:**

DecTech	Color	Sty. Element	Motif
Painted, under free hand	Purple-Blue, Intense Dark	Wavy Band 11	Individual A
Painted, under free hand	Neutrals, Dark	Wavy Band 11	Individual A

**Wavy Band 13**



Two wavy bands that are offset and stacked on top of each other.

**Stylistic Genre:** Slipware, factory made.

**Stylistic Genre:** Slipware, factory made

**Related Stylistic Element Data:**

DecTech	Color	Sty. Element	Motif
Slip, inlaid	Neutrals, Dark	Wavy Band 13	Stacked Combination A

**Wavy Band 14**



A single, solid wavy band similar to Wavy Band 03, but with feathery wisps extending from the underside of the band (Note: This band is pictured here with Fish Roe Band 05).

**Stylistic Genre:** The genre for this stylistic element depends on a combination of decorative technique, color, and element.

**Stylistic Genre:** Overglaze, handpainted

**Related Stylistic Element Data:**

DecTech	Color	Sty. Element	Motif
Painted, over free hand	Red, Intense Medium	Wavy Band 14	Individual A

**Wavy Band 16**



One or more incised or molded bands encircling a vessel in a zigzag pattern.

**Stylistic Genre:** None (leave field blank)

**Stylistic Genre:** None (leave field blank)

**Related Stylistic Element Data:**

<b>DecTech</b>	<b>Color</b>	<b>Sty. Element</b>	<b>Motif</b>
Incised, lathe/engine-Turned	No Applied Color	Wavy Band 16	Individual A

**Wavy Band, unid**

Use this when you have a small portion of a wavy band, but cannot identify the specific band.

**Stylistic Genre:** The genre for this stylistic element depends on a combination of decorative technique, color, and element.

**Wings**



Any element showing wings, stylized or not.

**Stylistic Genre:** The genre for this stylistic element depends on a combination of decorative technique, color, and element.

**Stylistic Genre:** Handpainted Blue

**Related Stylistic Element Data:**

DecTech	Color	Sty. Element	Motif
Painted, under free hand	Purple-Blue, Intense Medium	Wings	Individual A

**Woman**



Any element showing a female human.

**Stylistic Genre:** The genre for this stylistic element depends on a combination of decorative technique, color, and element.

**Stylistic Genre:** None (leave field blank)

**Related Stylistic Element Data:**

DecTech	Color	Sty. Element	Motif
Sprig Molded	No Applied Color	Woman	Individual A
Sprig Molded	No Applied Color	Child	Individual A