

# DAACS Stylistic Element Glossary

## D-G

*by* Beatrix Arendt, Lynsey Bates, Leslie Cooper, Jillian Galle,  
Elizabeth Sawyer, Jesse Sawyer, and Karen Smith

Last Updated April 2013

|                          |    |
|--------------------------|----|
| Dart Band 01 .....       | 6  |
| Dart Band 02 .....       | 6  |
| Dash Band 01 .....       | 7  |
| Dash Band 02 .....       | 7  |
| Dash Band 03 .....       | 8  |
| Dash Band 04 .....       | 8  |
| Dash Band 05 .....       | 8  |
| Dash Band 06 .....       | 9  |
| Dash Band 07 .....       | 9  |
| Dash Band 08 .....       | 9  |
| Dash Band 09 .....       | 10 |
| Dash Band 10 .....       | 10 |
| Dash Band 11 .....       | 10 |
| Dash Band 12 .....       | 11 |
| Dash Band, unid .....    | 11 |
| Dendritic .....          | 11 |
| Dentil Band 01 .....     | 12 |
| Dentil Band 02 .....     | 12 |
| Diamond Band 01 .....    | 13 |
| Diamond Band 02 .....    | 13 |
| Diamond Band 03 .....    | 13 |
| Diamond Band 04 .....    | 14 |
| Diamond Band 05 .....    | 14 |
| Diamond Band 06 .....    | 15 |
| Diamond Band 07 .....    | 15 |
| Diamond Band 08 .....    | 15 |
| Diamond Band 09 .....    | 16 |
| Diaper/1 Dot .....       | 16 |
| Diaper/4 Dot .....       | 17 |
| Diaper/5 Dot .....       | 17 |
| Diaper/Dot Band 01 ..... | 18 |
| Diaper/Star .....        | 19 |
| Diced Squares .....      | 20 |
| Diced Squares 01 .....   | 21 |
| Dogtooth Band 01 .....   | 21 |
| Dogtooth Band 02 .....   | 21 |
| Dogtooth Band 03 .....   | 22 |
| Dogtooth Band 04 .....   | 22 |
| Dogtooth Band 05 .....   | 23 |
| Dogtooth Band 06 .....   | 23 |

|                                  |    |
|----------------------------------|----|
| Dogtooth Band, unid .....        | 23 |
| Dot Band 01 .....                | 24 |
| Dot Band 02 .....                | 24 |
| Dot Band 03 .....                | 24 |
| Dot Band 04 .....                | 25 |
| Dot Band 05 .....                | 25 |
| Dot Band 06 .....                | 26 |
| Dot Band 07 .....                | 27 |
| Dot Band 08 .....                | 27 |
| Dot Band 09 .....                | 27 |
| Dot Band 10 .....                | 28 |
| Dot Band, Unid.....              | 28 |
| Dot Dash Band 01 .....           | 28 |
| Dot Cluster .....                | 29 |
| Dot Plume Edge .....             | 29 |
| Dots .....                       | 30 |
| Dotted/Terraced Rectangle .....  | 30 |
| Facet/Panel.....                 | 31 |
| Fanning.....                     | 32 |
| Feather Edge .....               | 32 |
| Fence.....                       | 33 |
| Fish.....                        | 33 |
| Fish Roe Band 01.....            | 34 |
| Fish Roe Band 02.....            | 34 |
| Fish Roe Band 03.....            | 34 |
| Fish Roe Band 04.....            | 35 |
| Fish Roe Band 05.....            | 35 |
| Fish Roe Band 06.....            | 35 |
| Fish Roe Band, unid. ....        | 36 |
| Fish Roe, unid. ....             | 36 |
| Flag/Banner.....                 | 36 |
| Floral Medallion .....           | 37 |
| Floral, radiating bloom 01 ..... | 37 |
| Floral, radiating bloom 02 ..... | 38 |
| Fluted.....                      | 38 |
| Folded Rim .....                 | 39 |
| Fruit .....                      | 39 |
| Garland 01 .....                 | 40 |
| Garland 02 .....                 | 40 |
| Garland 03 .....                 | 41 |

|                         |    |
|-------------------------|----|
| Garland 04 .....        | 41 |
| Garland 05 .....        | 42 |
| Garland 06 .....        | 42 |
| Garland 07 .....        | 43 |
| Garland 08 .....        | 43 |
| Garland 09 .....        | 44 |
| Garland 10 .....        | 44 |
| Garland 11 .....        | 45 |
| Garland 12 .....        | 45 |
| Garland 13 .....        | 46 |
| Garland, unid.....      | 46 |
| Geometric Band 01 ..... | 47 |
| Geometric Band 02 ..... | 47 |
| Geometric Band 03 ..... | 47 |
| Geometric Band 04 ..... | 48 |
| Geometric Band 05 ..... | 48 |
| Geometric Band 06 ..... | 48 |
| Geometric Band 07 ..... | 49 |
| Geometric Band 08 ..... | 49 |
| Geometric Band 09 ..... | 49 |
| Geometric Band 10 ..... | 50 |
| Geometric Band 11 ..... | 50 |
| Geometric Band 12 ..... | 51 |
| Geometric Band 13 ..... | 51 |
| Geometric Band 14 ..... | 52 |
| Geometric Band 15 ..... | 52 |
| Geometric Band 16 ..... | 53 |
| Geometric Band 17 ..... | 53 |
| Geometric Band 18 ..... | 53 |
| Geometric Band 19 ..... | 54 |
| Geometric Band 20 ..... | 54 |
| Geometric Band 21 ..... | 54 |
| Geometric Band 22 ..... | 55 |
| Geometric Band 23 ..... | 55 |
| Geometric Band 24 ..... | 55 |
| Geometric Band 25 ..... | 56 |
| Geometric Band 26 ..... | 56 |
| Geometric Band 27 ..... | 56 |
| Geometric Band 28 ..... | 57 |
| Geometric Band 29 ..... | 57 |

|                                     |    |
|-------------------------------------|----|
| Geometric Band 30 .....             | 57 |
| Geometric Band 31 .....             | 58 |
| Geometric Band 33 .....             | 58 |
| Geometric Band, unid. ....          | 58 |
| Geometric Circle.....               | 59 |
| Geometric Column 01 .....           | 59 |
| Geometric, unid. ....               | 60 |
| Granulated Band.....                | 60 |
| Grass.....                          | 61 |
| Grasses and Leaves Molded Edge..... | 62 |

**Stylistic Element Name and Image**

**Characteristics**

**Cataloging Example for the Depicted Sherd**

**Dart Band 01**



A single line encircling the entire vessel near the rim. Two half circles are suspended from the line with one additional half circle connecting the two, forming a small pyramid. A solid line extends perpendicularly from the top of the pyramid.

**Stylistic Genre:** The genre for this stylistic element depends on a combination of decorative technique, color, and element.

**Stylistic Genre:** Handpainted Blue

**Related Stylistic Element Data:**

| DecTech                  | Color                     | Sty. Element | Motif        |
|--------------------------|---------------------------|--------------|--------------|
| Painted, under free hand | Purple-Blue, Intense Dark | Dart Band 01 | Individual A |

**Dart Band 02**



This element consists of a line running around the vessel. Suspended downward from the line are v's of varying lengths. There is a dot centered inside one of the v's.

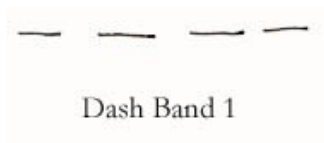
**Stylistic Genre:** The genre for this stylistic element depends on a combination of decorative technique, color, and element.

**Stylistic Genre:** Handpainted Blue

**Related Stylistic Element Data:**

| DecTech                  | Color                     | Sty. Element | Motif        |
|--------------------------|---------------------------|--------------|--------------|
| Painted, under free hand | Purple-Blue, Intense Dark | Dart Band 01 | Individual A |

**Dash Band 01**



A single line of short, straight dash marks characterize this element. As with all bands, it is an element that encircles the entire vessel. This band may or may not be located between two solid bands. It is seen on overglaze and underglazed porcelain.

**Stylistic Genre:** The genre for this stylistic element depends on a combination of decorative technique, color, and element.

**Stylistic Genre:** Overglaze, handpainted

**Related Stylistic Element Data:**

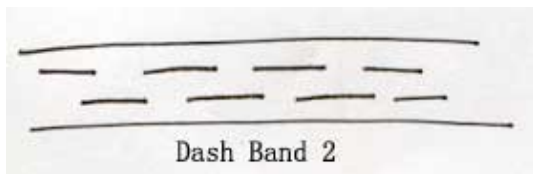
| DecTech                 | Color          | Sty. Element | Motif        |
|-------------------------|----------------|--------------|--------------|
| Painted, over free hand | Unidentifiable | Dash Band 01 | Individual A |

**Stylistic Genre:** Handpainted Blue

**Related Stylistic Element Data:**

| DecTech                  | Color                       | Sty. Element | Motif        |
|--------------------------|-----------------------------|--------------|--------------|
| Painted, under free hand | Purple-Blue, Intense Medium | Dash Band 01 | Individual A |

**Dash Band 02**



This band is characterized by two parallel rows of dashed lines that are located between two straight solid bands. The dashes alternate so that they are not in sync with each other. This means that there is open space above and below the majority of each dash. Like Dash Band 1, this band is primarily seen on Chinese porcelains.

**Stylistic Genre:** The genre for this stylistic element depends on a combination of decorative technique, color, and element.

**Stylistic Genre:** Overglaze, handpainted

**Related Stylistic Element Data:**

| DecTech                 | Color          | Sty. Element | Motif        |
|-------------------------|----------------|--------------|--------------|
| Painted, over free hand | Unidentifiable | Dash Band 02 | Individual A |

### Dash Band 03



Long, thin dashes incised into the body on parallel planes. The incised dashes alternate, so as one dash ends, the second dash begins. There is a slight overlap.

**Stylistic Genre:** Slipware, factory made

**Stylistic Genre:** Slipware, factory made

**Related Stylistic Element Data:**

| DecTech                      | Color                  | Sty. Element | Motif        |
|------------------------------|------------------------|--------------|--------------|
| Slip, lathe/engine turned    | Yellow-Red, Muted Dark | Dash Band 03 | Individual A |
| Incised, lathe/engine turned | No Applied Color       | Dash Band 03 | Individual A |
| Rouletted                    | Green, Muted Medium    | Unidentified | Individual B |

### Dash Band 04



Inlaid slip forms bands of short, rectangles evenly spaced and separated by thin parallel lines.

**Stylistic Genre:** Slipware, factory made

**Stylistic Genre:** Slipware, factory made

**Related Stylistic Element Data:**

| DecTech      | Color                  | Sty. Element | Motif        |
|--------------|------------------------|--------------|--------------|
| Slip, inlaid | Yellow-Red, Muted Dark | Dash Band 04 | Individual A |

### Dash Band 05



Vertical columns of dashes occurring at regular intervals around the vessel. Dashes of the same thickness are broken up by a solid band encircling the vessel.

**Stylistic Genre:** Slipware, factory made

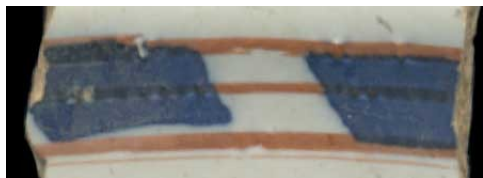
**Stylistic Genre:** Slipware, factory made

**Related Stylistic Element Data:**

| DecTech      | Color          | Sty. Element | Motif        |
|--------------|----------------|--------------|--------------|
| Slip, inlaid | Neutrals, Dark | Dash Band 05 | Individual A |



**Dash Band 06**



Dash Band 6 is characterized by wide, painted rectangles that are bisected by a thin, plain band. This is framed above and below with one or more plain bands.

**Stylistic Genre:** The genre for this stylistic element depends on a combination of decorative technique, color, and element.

**Stylistic Genre:** Polychrome, other

**Related Stylistic Element Data:**

| DecTech                  | Color                      | Sty. Element | Motif        |
|--------------------------|----------------------------|--------------|--------------|
| Painted, under free hand | Purple-Blue, Intense Dark  | Dash Band 06 | Individual A |
| Painted, under free hand | Yellow-Red, Intense Medium | Dash Band 06 | Individual A |

**Dash Band 07**



Picture here on Scratch Blue Salt Glazed Stoneware, this band is a rouletted band consisting of three rows of rectangles/squares.

**Stylistic Genre:** The genre for this stylistic element depends on a combination of decorative technique, color, and element.

**Stylistic Genre:** Scratch Blue

**Related Stylistic Element Data:**

| DecTech   | Color                   | Sty. Element | Motif        |
|-----------|-------------------------|--------------|--------------|
| Rouletted | Purple-Blue, Muted Dark | Dash Band 07 | Individual A |

**Dash Band 08**



Inlaid slip forms bands of tall rectangles evenly spaced. May be separated with short rectangles or a thin, plain line.

**Stylistic Genre:** Slipware, factory made

**Stylistic Genre:** Slipware, factory made

**Related Stylistic Element Data:**

| DecTech      | Color                  | Sty. Element | Motif        |
|--------------|------------------------|--------------|--------------|
| Slip, inlaid | Yellow-Red, Muted Dark | Dash Band 08 | Individual A |

**Dash Band 09**



This design consists of the geometric shape pictured, paired with its mirror image in a repeated band.

**Stylistic Genre:** Slipware, factory made

**Stylistic Genre:** Slipware, factory made

**Related Stylistic Element Data:**

| DecTech      | Color                  | Sty. Element | Motif        |
|--------------|------------------------|--------------|--------------|
| Slip, inlaid | Yellow-Red, Muted Dark | Dash Band 09 | Individual A |

**Dash Band 10**



A stack of thinly incised dashes with one thicker dash occurring at regular intervals around the vessel.

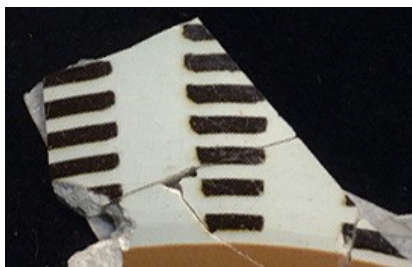
**Stylistic Genre:** Slipware, factory made

**Stylistic Genre:** Slipware, factory made

**Related Stylistic Element Data:**

| DecTech      | Color                  | Sty. Element | Motif        |
|--------------|------------------------|--------------|--------------|
| Slip, inlaid | Yellow-Red, Muted Dark | Dash Band 10 | Individual A |

**Dash Band 11**



Vertical stacks of dashes at regular intervals.

**Stylistic Genre:** Slipware, factory made

**Stylistic Genre:** Slipware, factory made

**Related Stylistic Element Data:**

| DecTech      | Color                  | Sty. Element | Motif        |
|--------------|------------------------|--------------|--------------|
| Slip, inlaid | Yellow-Red, Muted Dark | Dash Band 11 | Individual A |

**Dash Band 12**



A band of evenly spaced “fat” rectangles stacked on a band of evenly spaced “thin” rectangles, separated by a line.

**Stylistic Genre:** Slipware, factory made

**Stylistic Genre:** Slipware, factory made

**Related Stylistic Element Data:**

| DecTech      | Color                  | Sty. Element | Motif        |
|--------------|------------------------|--------------|--------------|
| Slip, inlaid | Yellow-Red, Muted Dark | Dash Band 12 | Individual A |

**Dash Band, unid**

Use this when there is a small portion of a dash band present, but the specific band cannot be identified.

**Stylistic Genre:** The genre for this stylistic element depends on a combination of decorative technique, color, and element.

**Dendritic**



The band consists of multiple, wide horizontal bands of color. A dark fern-like pattern occurs at regular intervals near the base and expands towards the top of the vessel. The way the glaze spreads, it has the appearance of trees or bushes.

**Stylistic Genre:** Slipware, factory made

**Stylistic Genre:** Slipware, factory made

**Related Stylistic Element Data:**

| DecTech   | Color          | Sty. Element | Motif        |
|-----------|----------------|--------------|--------------|
| Dendritic | Neutrals, Dark | Dendritic    | Individual A |

**Dentil Band 01**



Dentil Band 1 consists of a straight line with small rectangular “dentils” that are suspended below the line. This motif is very similar to the architectural dentil motif. This band is not contained within two solid lines. This element is most often executed in overglaze on Chinese porcelains.

**Stylistic Genre:** The genre for this stylistic element depends on a combination of decorative technique, color, and element.

**Stylistic Genre:** Overglaze, handpainted

**Related Stylistic Element Data:**

| DecTech                 | Color          | Sty. Element   | Motif        |
|-------------------------|----------------|----------------|--------------|
| Painted, over free hand | Unidentifiable | Dentil Band 01 | Individual A |

**Dentil Band 02**



Dentil Band 2 also consists of a straight line with small rectangular dentils that are suspended from the line. This band is contained within two solid lines. In the open areas next to the “teeth” of the dentil are small vertical lines that intersect with a second solid line running underneath the dentils.

**Stylistic Genre:** The genre for this stylistic element depends on a combination of decorative technique, color, and element.

**Stylistic Genre:** Handpainted Blue

**Related Stylistic Element Data:**

| DecTech                  | Color                     | Sty. Element   | Motif        |
|--------------------------|---------------------------|----------------|--------------|
| Painted, under free hand | Purple-Blue, Intense Dark | Dentil Band 02 | Individual A |

### Diamond Band 01



This band consists of a single row of repeated, linked molded diamonds. All of the diamonds are hollow. This molded diamond string is bound on either side by raised, molded plain bands.

**Stylistic Genre:** Molded Edge Decoration, other

**Stylistic Genre:** Molded Edge Decoration, other

#### Related Stylistic Element Data:

| DecTech | Color            | Sty. Element    | Motif        |
|---------|------------------|-----------------|--------------|
| Molded  | No Applied Color | Diamond Band 01 | Individual A |

### Diamond Band 02



Like Diamond Band 1, this band consists of a single row of repeated, linked molded diamonds. However, the diamonds on this band alternate between solid diamonds and hollow diamonds. This molded diamond string is bound on either side by raised, molded plain bands.

**Stylistic Genre:** Molded Edge Decoration, other

**Stylistic Genre:** Molded Edge Decoration, other

#### Related Stylistic Element Data:

| DecTech | Color            | Sty. Element    | Motif        |
|---------|------------------|-----------------|--------------|
| Molded  | No Applied Color | Diamond Band 02 | Individual A |

### Diamond Band 03



The element of this band is a chain of solid diamonds with beads in the space above and between the diamonds. Solid triangles are in the space below the diamonds.

**Stylistic Genre:** Molded Edge Decoration, other

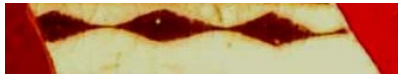
**Stylistic Genre:** Molded Edge Decoration, other

#### Related Stylistic Element Data:

| DecTech | Color            | Sty. Element    | Motif        |
|---------|------------------|-----------------|--------------|
| Molded  | No Applied Color | Diamond Band 03 | Individual A |



**Diamond Band 04**



This band consists of solid diamonds, either painted or slipped, whose right and left ends are joined to other diamonds, creating a band around the vessel. Commonly found on factory-made slipwares.

**Stylistic Genre:** Slipware, factory made

**Stylistic Genre:** Slipware, factory made

**Related Stylistic Element Data:**

| DecTech                   | Color          | Sty. Element    | Motif        |
|---------------------------|----------------|-----------------|--------------|
| Slip, lathe/engine turned | Neutrals, Dark | Diamond Band 04 | Individual A |

**Diamond Band 05**



This band consists of a solid diamond, slipped or painted, outlined by another diamond with a small amount of space in between. The outer outline joins adjacent diamonds to form a band. Most off found on factory-made slipwares.

**Stylistic Genre:** Slipware, factory made

**Stylistic Genre:** Slipware, factory made

**Related Stylistic Element Data:**

| DecTech                   | Color          | Sty. Element    | Motif        |
|---------------------------|----------------|-----------------|--------------|
| Slip, lathe/engine turned | Neutrals, Dark | Diamond Band 05 | Individual A |

**Diamond Band 06**



This band consists of mirrored zigzag lines that cross to form diamonds with their ends joined together.

**Stylistic Genre:** Slipware, factory made

**Stylistic Genre:** Slipware, factory made

**Related Stylistic Element Data:**

| DecTech      | Color                  | Sty. Element    | Motif        |
|--------------|------------------------|-----------------|--------------|
| Slip, inlaid | Yellow-Red, Muted Dark | Diamond Band 06 | Individual A |

**Diamond Band 07**



A single band of unconnected diamonds. The example is executed with inlaid slip on factory made slipware.

**Stylistic Genre:** Slipware, factory made

**Stylistic Genre:** Slipware, factory made

**Related Stylistic Element Data:**

| DecTech      | Color                  | Sty. Element    | Motif        |
|--------------|------------------------|-----------------|--------------|
| Slip, inlaid | Yellow-Red, Muted Dark | Diamond Band 07 | Individual A |
| Slip, inlaid | Yellow-Red, Muted Dark | Dash Band, unid | Individual B |

**Diamond Band 08**



A single band of connected, open diamonds. Each diamond is circumscribed by an oval with a vertical line where ovals touch.

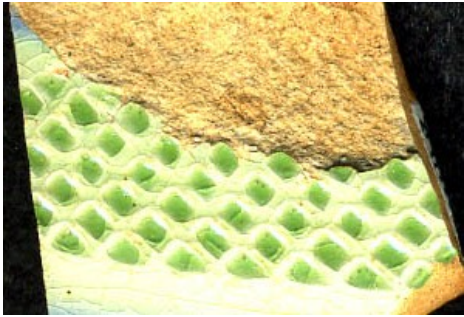
**Stylistic Genre:** Slipware, factory made

**Stylistic Genre:** Slipware, factory made

**Related Stylistic Element Data:**

| DecTech   | Color            | Sty. Element    | Motif        |
|-----------|------------------|-----------------|--------------|
| Rouletted | No Applied Color | Diamond Band 08 | Individual A |

**Diamond Band 09**



This band consists of stacked rows of diamond-shaped rouletted elements. The rows are staggered so that the elements line up continuously diagonally. In this example, inlaid slip fills the rouletted elements.

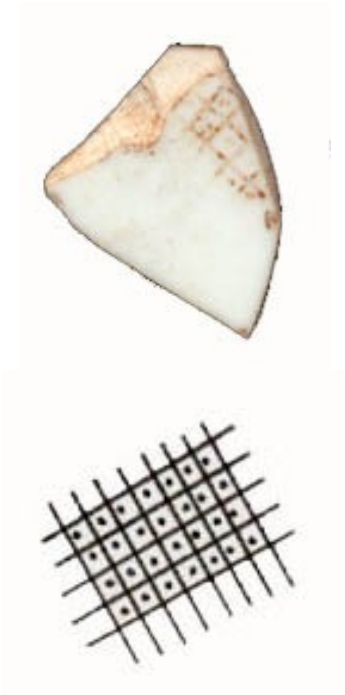
**Stylistic Genre:** Slipware, factory made

**Stylistic Genre:** Slipware, factory made

**Related Stylistic Element Data:**

| DecTech      | Color                        | Sty. Element    | Motif        |
|--------------|------------------------------|-----------------|--------------|
| Rouletted    | Not Applicable               | Diamond Band 09 | Individual A |
| Slip, Inlaid | Green-Yellow, Intense Medium | Diamond Band 09 | Individual A |

**Diaper/1 Dot**



This is a basic Dot/Diaper pattern with a single dot in the middle of each diaper, or crosshatch. This design can be executed with a range of decorative techniques, from Painted, under and Painted, over, to molding. There may be a lighter color shading behind the diaper/1 dot pattern.

**Stylistic Genre:** The genre for this stylistic element depends on a combination of decorative technique, color, and element.

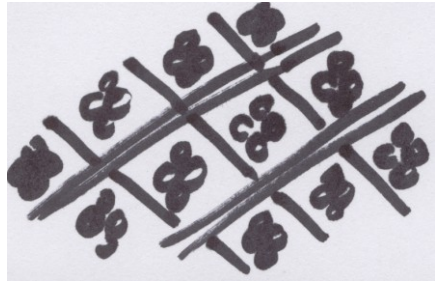
**Stylistic Genre:** Overglaze, handpainted

**Related Stylistic Element Data:**

| DecTech                 | Color               | Sty. Element | Motif        |
|-------------------------|---------------------|--------------|--------------|
| Painted, over free hand | Red, Intense Medium | Diaper/1 Dot | Individual A |



### Diaper/4 Dot



This decoration is a variation of the classic molded Dot/Diaper pattern. It has four raised dots in the center of a double banded diamond or crosshatch (the diaper).

**Stylistic Genre:**  
Dot/Diaper/Basketweave

**Stylistic Genre:** Dot/Diaper/Basketweave

**Related Stylistic Element Data:**

| DecTech | Color            | Sty. Element | Motif                 |
|---------|------------------|--------------|-----------------------|
| Molded  | No Applied Color | Diaper/4 Dot | Stacked Combination A |

### Diaper/5 Dot



This decoration is the classic molded Dot/Diaper pattern. It has five raised dots in the center of a double banded diamond or crosshatch (the diaper).

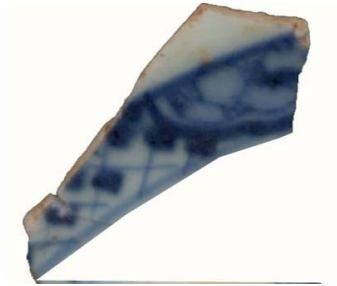
**Stylistic Genre:**  
Dot/Diaper/Basketweave

**Stylistic Genre:** Dot/Diaper/Basketweave

**Related Stylistic Element Data:**

| DecTech | Color            | Sty. Element | Motif                 |
|---------|------------------|--------------|-----------------------|
| Molded  | No Applied Color | Diaper/5 Dot | Stacked Combination A |

### Diaper/Dot Band 01



This element is the same as Diaper/1 Dot except it exists in band form and is bound on both sides by solid lines.

**Stylistic Genre:** The genre for this stylistic element depends on a combination of decorative technique, color, and element.

**Stylistic Genre:** Handpainted Blue

**Related Stylistic Element Data:**

| DecTech                  | Color                     | Sty. Element       | Motif        |
|--------------------------|---------------------------|--------------------|--------------|
| Painted, under free hand | Purple-Blue, Muted Dark   | Diaper/Dot Band 01 | Individual A |
| Painted, under free hand | Purple-Blue, Intense Dark | Diaper/Dot Band 01 | Individual A |

**Diaper/Star**



The star lattice element is a molded element that consists of molded stars inside of the diamonds created by the molded lattice pattern. Seen here on Whieldon ware.

**Stylistic Genre:**  
Dot/Diaper/Basketweave



**Stylistic Genre:** Dot/Diaper/Basketweave

**Related Stylistic Element Data:**

| DecTech | Color            | Sty. Element | Motif        |
|---------|------------------|--------------|--------------|
| Molded  | No Applied Color | Diaper/Stars | Individual A |

**Stylistic Genre:** Dot/Diaper/Basketweave

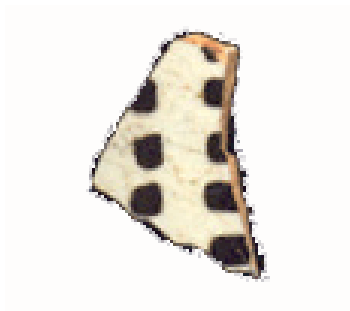
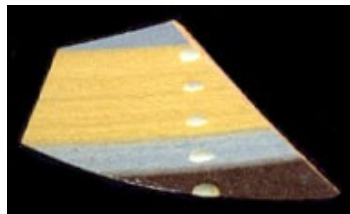
**Related Stylistic Element Data:**

| DecTech | Color          | Sty. Element   | Motif                  |
|---------|----------------|----------------|------------------------|
| Molded  | Not Applicable | Diaper/Star    | Adjacent Combination A |
| Molded  | Not Applicable | Plume, feather | Adjacent Combination A |
| Molded  | Not Applicable | Lattice Weave  | Adjacent Combination A |

**Diced Squares**

Diced squares are short incised lines that are stacked and evenly spaced. They can be executed on factory made slipware or on refined stonewares.

**Stylistic Genre:** The genre for this stylistic element depends on a combination of decorative technique, color, and element.



**Stylistic Genre:** Slipware, factory made

**Related Stylistic Element Data:**

| DecTech                      | Color                  | Sty. Element  | Motif        |
|------------------------------|------------------------|---------------|--------------|
| Incised, lathe/engine turned | No Applied Color       | Diced Squares | Individual A |
| Slip, lathe/engine turned    | Blue, Muted Light      | Plain Band 12 | Individual A |
| Slip, lathe/engine turned    | Yellow, Intense Light  | Plain Band 12 | Individual A |
| Slip, lathe/engine turned    | Yellow-Red, Muted Dark | Plain Band 12 | Individual A |

**Stylistic Genre:** Slipware, factory made

**Related Stylistic Element Data:**

| DecTech      | Color                  | Sty. Element  | Motif        |
|--------------|------------------------|---------------|--------------|
| Slip, inlaid | Yellow-Red, Muted Dark | Diced Squares | Individual A |

**Stylistic Genre:** None

**Related Stylistic Element Data:**

| DecTech                      | Color            | Sty. Element  | Motif        |
|------------------------------|------------------|---------------|--------------|
| Incised, lathe/engine turned | No Applied Color | Diced Squares | Individual A |

**Diced Squares 01**



Diced squares 01 is characterized by evenly spaced and evenly sized incised squares.

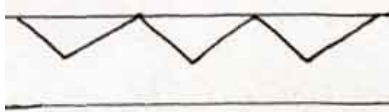
**Stylistic Genre:** The genre for this stylistic element depends on a combination of decorative technique, color, and element.

**Stylistic Genre:** Slipware, factory made

**Related Stylistic Element Data:**

| DecTech                      | Color            | Sty. Element     | Motif        |
|------------------------------|------------------|------------------|--------------|
| Incised, lathe/engine turned | Neutrals, light  | Diced Squares 01 | Individual A |
| Painted, under glaze         | Neutrals, medium | Diced Squares 01 | Individual A |

**Dogtooth Band 01**



Dogtooth Band 1 consists of a saw-tooth motif that extends downward from a single solid line. A second solid line is painted below, but not touching, the saw-tooth motif.

**Stylistic Genre:** The genre for this stylistic element depends on a combination of decorative technique, color, and element.

**Stylistic Genre:** Overglaze, handpainted

**Related Stylistic Element Data:**

| DecTech                 | Color          | Sty. Element     | Motif        |
|-------------------------|----------------|------------------|--------------|
| Painted, over free hand | Unidentifiable | Dogtooth Band 01 | Individual A |

**Dogtooth Band 02**



This band is similar to Dogtooth Band 1. In addition to the upper band and saw-tooth motif, a dot is placed between the closed area of the triangle and the upper solid line. On the underside of the saw-tooth extends a small spearhead or arrow. There is NOT a second solid line enclosing the entire pattern. This is primarily seen on overglazed porcelain.

**Stylistic Genre:** The genre for this stylistic element depends on a combination of decorative technique, color, and element.

**Stylistic Genre:** Overglaze, handpainted

**Related Stylistic Element Data:**

| DecTech                  | Color                     | Sty. Element     | Motif        |
|--------------------------|---------------------------|------------------|--------------|
| Painted, over free hand  | Red, Muted Light          | Dogtooth Band 02 | Individual A |
| Painted, under free hand | Purple-Blue, Intense Dark | Dogtooth Band 02 | Individual A |

### Dogtooth Band 03



Dogtooth Band 3 is characterized by a saw-tooth band that has dots in the lower, interior spaces of the triangle. This design may or may not have a lower plain band. It is often painted along a scalloped edge

**Stylistic Genre:** The genre for this stylistic element depends on a combination of decorative technique, color, and element.

**Stylistic Genre:** Overglaze, handpainted

#### Related Stylistic Element Data:

| DecTech                  | Color                     | Sty. Element     | Motif        |
|--------------------------|---------------------------|------------------|--------------|
| Painted, over free hand  | Unidentifiable            | Dogtooth Band 03 | Individual A |
| Painted, under free hand | Purple-Blue, Intense Dark | Dogtooth Band 03 | Individual A |

### Dogtooth Band 04



Dogtooth Band 04 is characterized by a saw-tooth band that has dots in the lower interior spaces of the triangle and in the upper interior spaces of the triangle. The band is bound by single bands on the top and bottom. The band is similar to Wavy Band 07, except the saw-tooth band forms sharp, nearly 90 degree angles, instead of undulating.

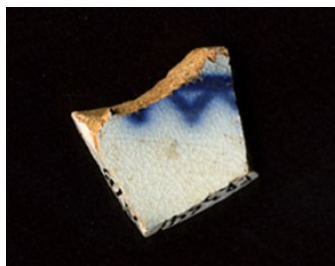
**Stylistic Genre:** The genre for this stylistic element depends on a combination of decorative technique, color, and element.

**Stylistic Genre:** Overglaze, handpainted

#### Related Stylistic Element Data:

| DecTech                 | Color             | Sty. Element     | Motif        |
|-------------------------|-------------------|------------------|--------------|
| Painted, over free hand | Red, Muted Medium | Dogtooth Band 04 | Individual A |

### Dogtooth Band 05



Dogtooth Band 05 consists of a saw-tooth motif that extends downward from a single solid line. It is the same as Dogtooth Band 01 except there is no line below the saw-tooth motif.

**Stylistic Genre:** The genre for this stylistic element depends on a combination of decorative technique, color, and element.

**Stylistic Genre:** Underglaze, hand painted

#### Related Stylistic Element Data:

| DecTech                  | Color                     | Sty. Element     | Motif        |
|--------------------------|---------------------------|------------------|--------------|
| Painted, under free hand | Purple-blue, Intense Dark | Dogtooth Band 05 | Individual A |

### Dogtooth Band 06



Dogtooth Band 06 consists of the simplest saw-tooth motif : a plain jig-jaw line with no additional adornments.

**Stylistic Genre:** The genre for this stylistic element depends on a combination of decorative technique, color, and element.

**Stylistic Genre:** None (leave field blank)

#### Related Stylistic Element Data:

| DecTech            | Color            | Sty. Element     | Motif        |
|--------------------|------------------|------------------|--------------|
| Incised, free hand | No Applied Color | Dogtooth Band 06 | Individual A |

### Dogtooth Band, unid

Use this when there is a small portion of a dogtooth band present, but the specific band cannot be identified.

**Stylistic Genre:** The genre for this stylistic element depends on a combination of decorative technique, color, and element.

**Dot Band 01**



Dot Band 1 is characterized by a single band of dots that encircle a vessel. This band may or may not have two thin solid bands on either side.

**Stylistic Genre:** The genre for this stylistic element depends on a combination of decorative technique, color, and element.

**Stylistic Genre:** Handpainted Blue

**Related Stylistic Element Data:**

| DecTech                  | Color                     | Sty. Element | Motif        |
|--------------------------|---------------------------|--------------|--------------|
| Painted, under free hand | Purple-Blue, Intense Dark | Dot Band 01  | Individual A |

**Dot Band 02**



Dot Band 2 is a series of connected squares. In the center of each square is a single dot. Think of cells in a plant! Note that each cell is rectangular or square, not round, which is what distinguishes this band from a Fish Roe Band.

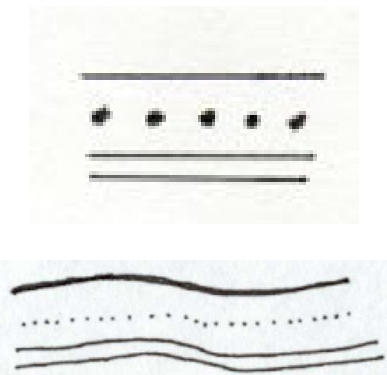
**Stylistic Genre:** The genre for this stylistic element depends on a combination of decorative technique, color, and element.

**Stylistic Genre:** Handpainted Blue

**Related Stylistic Element Data:**

| DecTech                  | Color                     | Sty. Element | Motif        |
|--------------------------|---------------------------|--------------|--------------|
| Painted, under free hand | Purple-Blue, Intense Dark | Dot Band 02  | Individual A |
| Painted, under free hand | Purple-Blue, Muted Medium | Dot Band 02  | Individual A |

**Dot Band 03**



Dot Band 3 consists of a single line of dots bordered by a single band on the top and a double band on the bottom. The band can be wavy or straight. Often seen in overglaze Chinese porcelain.

**Stylistic Genre:** The genre for this stylistic element depends on a combination of decorative technique, color, and element.

**Stylistic Genre:** Overglaze, handpainted

**Related Stylistic Element Data:**

| DecTech                 | Color          | Sty. Element | Motif        |
|-------------------------|----------------|--------------|--------------|
| Painted, over free hand | Unidentifiable | Dot Band 03  | Individual A |



**Dot Band 04**



This band consists of several small dots and one larger dot that are repeated and compressed between two plain bands.

**Stylistic Genre:** The genre for this stylistic element depends on a combination of decorative technique, color, and element.

**Stylistic Genre:** Polychrome, warm

**Related Stylistic Element Data:**

| DecTech                  | Color              | Sty. Element | Motif        |
|--------------------------|--------------------|--------------|--------------|
| Painted, under free hand | Yellow, Muted Dark | Dot Band 04  | Individual A |

**Dot Band 05**



This band consists of a single line of impressed dots or finer-shaped depressions. This has been seen just below the rim on Colonoware.

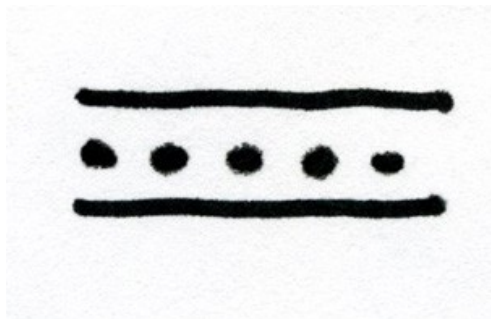
**Stylistic Genre:** The genre for this stylistic element depends on a combination of decorative technique, color, and element.

**Stylistic Genre:** None (leave field blank)

**Related Stylistic Element Data:**

| DecTech   | Color            | Sty. Element | Motif        |
|-----------|------------------|--------------|--------------|
| Impressed | No Applied Color | Dot Band 05  | Individual A |

**Dot Band 06**



This band consists of a single line of dots bordered by two thick single bands.

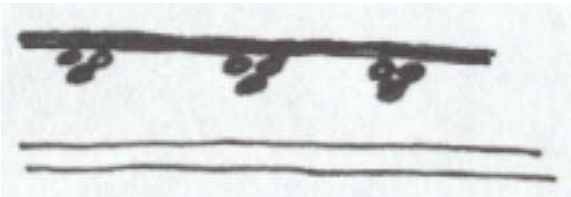
**Stylistic Genre:** The genre for this stylistic element depends on a combination of decorative technique, color, and element.

**Stylistic Genre:** Overglaze, handpainted

**Related Stylistic Element Data:**

| <b>DecTech</b>          | <b>Color</b> | <b>Sty. Element</b> | <b>Motif</b> |
|-------------------------|--------------|---------------------|--------------|
| Painted, over free hand | Unidentified | Dot Band 06         | Individual A |

**Dot Band 07**



This band is bound by a single band at the top with repeating three-dot clusters attached to it, and a double band at the bottom.

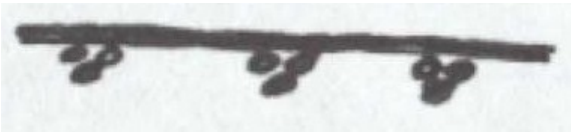
**Stylistic Genre:** The genre for this stylistic element depends on a combination of decorative technique, color, and element.

**Stylistic Genre:** Overglaze, handpainted

**Related Stylistic Element Data:**

| DecTech                 | Color        | Sty. Element | Motif        |
|-------------------------|--------------|--------------|--------------|
| Painted, over free hand | Unidentified | Dot Band 07  | Individual A |

**Dot Band 08**



This band is similar to Dot Band 07. It is bound by a single band at the top with repeating three-dot clusters attached to it. Unlike Dot Band 07, there is no band below.

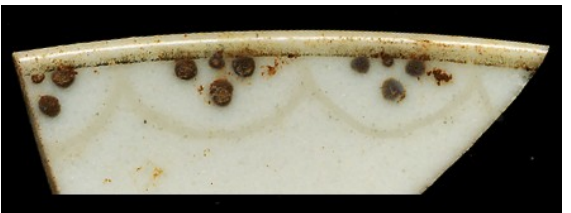
**Stylistic Genre:** The genre for this stylistic element depends on a combination of decorative technique, color, and element.

**Stylistic Genre:** Overglaze, handpainted

**Related Stylistic Element Data:**

| DecTech                 | Color        | Sty. Element | Motif        |
|-------------------------|--------------|--------------|--------------|
| Painted, over free hand | Unidentified | Dot Band 08  | Individual A |

**Dot Band 09**



This band consists of clusters of dots below a single solid line. A swag also extends from the solid line and between the dot clusters.

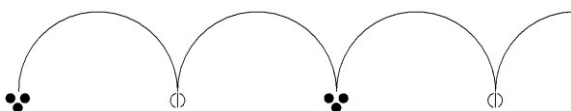
**Stylistic Genre:** The genre for this stylistic element depends on a combination of decorative technique, color, and element.

**Stylistic Genre:** Overglaze, handpainted

**Related Stylistic Element Data:**

| DecTech                 | Color          | Sty. Element | Motif        |
|-------------------------|----------------|--------------|--------------|
| Painted, over free hand | Unidentified   | Dot Band 09  | Individual A |
| Painted, over free hand | Neutrals, Dark | Dot Band 09  | Individual A |

**Dot Band 10**



This element consists of an arcing band that has an alternating pattern of 3 grouped dots and a leaf at the point of each arc.

**Stylistic Genre:** The genre for this stylistic element depends on a combination of decorative technique, color, and element.

**Stylistic Genre:** Overglaze, handpainted

**Related Stylistic Element Data:**

| DecTech                 | Color | Sty. Element | Motif        |
|-------------------------|-------|--------------|--------------|
| Painted, over free hand | Gilt  | Dot Band 10  | Individual A |

**Dot Band, Unid**

Use this when there is a small portion of a dot band present, but the specific band cannot be identified.

**Stylistic Genre:** The genre for this stylistic element depends on a combination of decorative technique, color, and element.

**Dot Dash Band 01**



Dot Dash Band 01 is defined by a dot-dash pattern that is bound on either side by thin solid bands. This example also had a large band of background color onto which the dot-dashes and thin solid bands are painted.

**Stylistic Genre:** The genre for this stylistic element depends on a combination of decorative technique, color, and element

**Stylistic Genre:** Polychrome, warm

**Related Stylistic Element Data:**

| DecTech                  | Color                    | Sty. Element     | Motif        |
|--------------------------|--------------------------|------------------|--------------|
| Painted, under free hand | Yellow-Red, Muted Medium | Dot Dash Band 01 | Individual A |
| Painted, under free hand | Yellow, Intense Light    | Dot Dash Band 01 | Individual A |

**Dot Cluster**



Dot clusters are characterized by small dots that are grouped together. They are seen on both porcelains and earthenwares. Any abstract grouping of dots, not related to botanical elements, should be classified as a “Dot Cluster.” When the dot cluster is repeated, make sure the Motif is “Individual A, repeated.”

**Stylistic Genre:** The genre for this stylistic element depends on a combination of decorative technique, color, and element.

**Stylistic Genre:** Handpainted Blue

**Related Stylistic Element Data:**

| DecTech                  | Color                     | Sty. Element | Motif        |
|--------------------------|---------------------------|--------------|--------------|
| Painted, under free hand | Purple-Blue, Intense Dark | Dot Cluster  | Individual A |

**Dot Plume Edge**



This element consists of a scalloped rim with a band of raised dots along the rim and a band of plumage directly beneath. All the three portions are painted to varying degrees. \*NOTE: like certain shell-edge patterns, the scalloped rim is not recorded but assumed to be inherent in the stylistic element.

**Stylistic Genre:** Molded Edge Decoration, other

**Stylistic Genre:** Molded Edge Decoration, other

**Related Stylistic Element Data:**

| DecTech                  | Color                     | Sty. Element   | Motif        |
|--------------------------|---------------------------|----------------|--------------|
| Painted, under free hand | Purple-Blue, Intense Dark | Dot Plume Edge | Individual A |
| Molded                   | Not Applicable            | Dot Plume Edge | Individual A |



**Dots**



Use Dots to describe any randomly placed dots on a vessel. This may include one or several.

**Stylistic Genre:** The genre for this stylistic element depends on a combination of decorative technique, color, and element.

**Stylistic Genre:** None (leave field blank)

**Related Stylistic Element Data:**

| DecTech | Color                  | Sty. Element | Motif        |
|---------|------------------------|--------------|--------------|
| Slip    | Yellow, Intense Light  | Solid        | Individual A |
| Slip    | Yellow-Red, Muted Dark | Dots         | Individual A |

**Dotted/Terraced Rectangle**



A repeated pattern of stepped rectangles with dots in the widest portion of the rectangle characterizes this element. Note: This element can also be seen without dots in the rectangles, as seen in the second image.

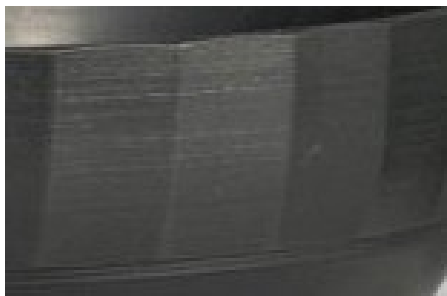
**Stylistic Genre:** Slipware, factory made

**Stylistic Genre:** Slipware, factory made

**Related Stylistic Element Data:**

| DecTech      | Color          | Sty. Element                     | Motif        |
|--------------|----------------|----------------------------------|--------------|
| Slip, inlaid | Neutrals, Dark | Dotted/<br>Terraced<br>Rectangle | Individual A |

**Facet/Panel**



Composed of many sides. These can be either flat sides or can be slightly rounded.

**Stylistic Genre:** None. Leave field blank.

**Stylistic Genre:** None

**Related Stylistic Element Data:**

| <b>DecTech</b>                     | <b>Color</b>        | <b>Sty. Element</b> | <b>Motif</b> |
|------------------------------------|---------------------|---------------------|--------------|
| Incised,<br>lathe/engine<br>turned | No Applied<br>Color | Facet/Panel         | Individual A |

| <b>DecTech</b> | <b>Color</b>        | <b>Sty. Element</b> | <b>Motif</b> |
|----------------|---------------------|---------------------|--------------|
| Molded         | No Applied<br>Color | Facet/Panel         | Individual A |

**Fanning**



A multi-color circle or oval shape where the colors appear to slide off the side towards the base of the vessel.

**Stylistic Genre:** Slipware, factory made

**Stylistic Genre:** Slipware, factory made

**Related Stylistic Element Data:**

| DecTech | Color                  | Sty. Element | Motif        |
|---------|------------------------|--------------|--------------|
| Slip    | Yellow-Red, Muted Dark | Fanning      | Individual A |
| Slip    | Neutrals, Dark         | Fanning      | Individual A |

**Feather Edge**



Molded scalloped rim with multiple raised arcs that hang from the rim and curve onto the marley.

**Stylistic Genre:** Feather Edge

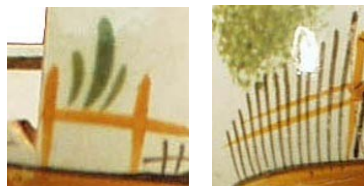
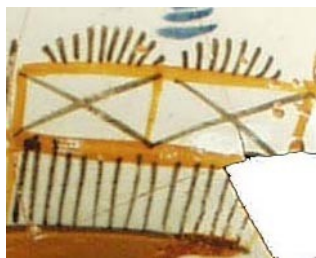
**Stylistic Genre:** Feather Edge

**Related Stylistic Element Data:**

| DecTech | Color            | Sty. Element | Motif        |
|---------|------------------|--------------|--------------|
| Molded  | No Applied Color | Feather Edge | Individual A |



**Fence**



As the images demonstrate, a fence can take multiple forms. You may see an intricate Trellis fence (top) or a simple H-shaped fence. Repeated vertical lines with a single or double horizontal line crossing through the lines are also considered a fence.

**Stylistic Genre:** The genre for this stylistic element depends on a combination of decorative technique, color, and element.

**Stylistic Genre:** Handpainted Blue

**Related Stylistic Element Data:**

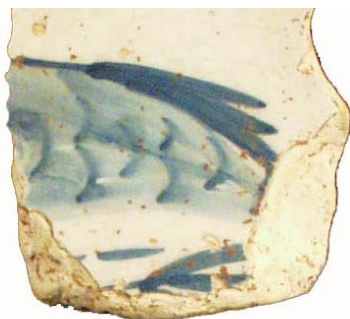
| DecTech                  | Color                     | Sty. Element | Motif               |
|--------------------------|---------------------------|--------------|---------------------|
| Painted, under free hand | Purple-Blue, Intense Dark | Fence        | Scene Combination A |

**Stylistic Genre:** Polychrome, warm

**Related Stylistic Element Data:**

| DecTech                  | Color                        | Sty. Element            | Motif               |
|--------------------------|------------------------------|-------------------------|---------------------|
| Painted, under free hand | Yellow-Red, Intense Medium   | Fence                   | Scene Combination A |
| Painted, under free hand | Green-Yellow, Intense Medium | Botanical, unidentified | Scene Combination A |

**Fish**



Any decorative technique made to look like a fish! Can be painted or molded.

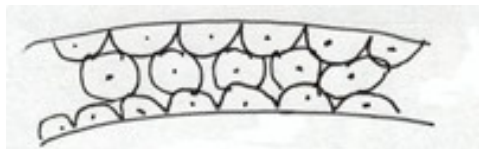
**Stylistic Genre:** The genre for this stylistic element depends on a combination of decorative technique, color, and element.

**Stylistic Genre:** Handpainted Blue

**Related Stylistic Element Data:**

| DecTech                  | Color                       | Sty. Element | Motif        |
|--------------------------|-----------------------------|--------------|--------------|
| Painted, under free hand | Purple-Blue, Intense Medium | Fish         | Individual A |
| Painted, under free hand | Purple-Blue, Intense Dark   | Fish         | Individual A |

**Fish Roe Band 01**



Bound by two solid lines, this band has half fish roes extending from the upper and lower solid lines. Painted between these half fish roe is a row of complete, circular fish roe. This is most often seen on overglaze Chinese porcelain.

**Stylistic Genre:** The genre for this stylistic element depends on a combination of decorative technique, color, and element.

**Stylistic Genre:** Overglaze, handpainted

**Related Stylistic Element Data:**

| DecTech                 | Color             | Sty. Element     | Motif        |
|-------------------------|-------------------|------------------|--------------|
| Painted, over free hand | Gilt              | Fish Roe Band 01 | Individual A |
| Painted, over free hand | Red, Intense Dark | Fish Roe Band 01 | Individual A |

**Fish Roe Band 02**



A single row of fish roe characterizes this band. It consists of a single row of circles with a single dot in the center.

**Stylistic Genre:** The genre for this stylistic element depends on a combination of decorative technique, color, and element.

**Stylistic Genre:** Handpainted Blue

**Related Stylistic Element Data:**

| DecTech                  | Color                     | Sty. Element     | Motif                 |
|--------------------------|---------------------------|------------------|-----------------------|
| Painted, under free hand | Purple-Blue, Intense Dark | Fish Roe Band 02 | Stacked Combination A |

**Fish Roe Band 03**



Multiple, overlapping fish roe with a solid dot in the center. They have the appearance of fish scales.

**Stylistic Genre:** The genre for this stylistic element depends on a combination of decorative technique, color, and element.

**Stylistic Genre:** Handpainted Blue

**Related Stylistic Element Data:**

| DecTech                  | Color                       | Sty. Element     | Motif        |
|--------------------------|-----------------------------|------------------|--------------|
| Painted, under free hand | Purple-Blue, Intense Dark   | Fish Roe Band 03 | Individual A |
| Painted, under free hand | Purple-Blue, Intense Medium | Fish Roe Band 03 | Individual A |

**Fish Roe Band 04**



Fish Roe Band 4 is a single band of half-circular fish roe. Extending perpendicular from the base of each fish roe is a thin, vertical line.

**Stylistic Genre:** The genre for this stylistic element depends on a combination of decorative technique, color, and element.

**Stylistic Genre:** Handpainted Blue

**Related Stylistic Element Data:**

| DecTech                  | Color                     | Sty. Element     | Motif        |
|--------------------------|---------------------------|------------------|--------------|
| Painted, under free hand | Purple-Blue, Intense Dark | Fish Roe Band 04 | Individual A |

**Fish Roe Band 05**



Fish Roe Band 05 has double rows of circular fish roe oriented upwards. The dot within the fish roe is amorphous, and is not obvious within all the circles (Note: This band is pictured here with Wavy Band 14).

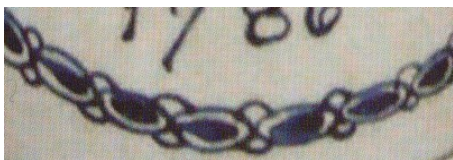
**Stylistic Genre:** The genre for this stylistic element depends on a combination of decorative technique, color, and element.

**Stylistic Genre:** Overglaze, handpainted

**Related Stylistic Element Data:**

| DecTech                 | Color               | Sty. Element     | Motif        |
|-------------------------|---------------------|------------------|--------------|
| Painted, over free hand | Red, Intense Medium | Fish Roe Band 05 | Individual A |

**Fish Roe Band 06**



A single row of connected oval "fish roe" with four smaller circles around each fish roe. The central roe has a smaller solid circle within.

**Stylistic Genre:** The genre for this stylistic element depends on a combination of decorative technique, color, and element.

**Stylistic Genre:** Handpainted Blue

**Related Stylistic Element Data:**

| DecTech                  | Color                     | Sty. Element     | Motif        |
|--------------------------|---------------------------|------------------|--------------|
| Painted, under free hand | Purple-Blue, Intense Dark | Fish Roe Band 06 | Individual A |

**Fish Roe Band, unid.**

Use this term when you have a band of fish roe (circle with a central dot) but cannot identify the exact fish roe band.

**Stylistic Genre:** The genre for this stylistic element depends on a combination of decorative technique, color, and element.

**Fish Roe, unid.**



Use this term when you have one or more fish roe but you cannot identify the element they form. They may be in a small group or seen individually.

**Stylistic Genre:** The genre for this stylistic element depends on a combination of decorative technique, color, and element.

**Stylistic Genre:** Handpainted Blue

**Related Stylistic Element Data:**

| DecTech                  | Color                     | Sty. Element    | Motif        |
|--------------------------|---------------------------|-----------------|--------------|
| Painted, under free hand | Purple-Blue, Intense Dark | Fish Roe, unid. | Individual A |

**Flag/Banner**



This term should be used when you have some sort of pennant, in this case two are found on a landscape feature.

**Stylistic Genre:** The genre for this stylistic element depends on a combination of decorative technique, color, and element.

**Stylistic Genre:** Overglaze, handpainted

**Related Stylistic Element Data:**

| DecTech                 | Color        | Sty. Element | Motif        |
|-------------------------|--------------|--------------|--------------|
| Painted, over free hand | Unidentified | Flag/Banner  | Individual A |

**Floral Medallion**



One might think of Floral Medallions as a single flower viewed from above—a plan view of a flower without stems. Floral Medallions are most often painted on the interior bottom of a teabowl, bowl, or saucer.

**Stylistic Genre:** The genre for this stylistic element depends on a combination of decorative technique, color, and element.

**Stylistic Genre:** Handpainted Blue

**Related Stylistic Element Data:**

| DecTech                  | Color                     | Sty. Element     | Motif        |
|--------------------------|---------------------------|------------------|--------------|
| Painted, under free hand | Purple-Blue, Intense Dark | Floral Medallion | Individual A |

**Floral, radiating bloom 01**



Half of a flower suspended from a band. A radiating bloom may take many forms. It may be drawn on a plain background (see top) with detailed petals and leaves, or it may be drawn with a shaded fish scale or lotus flower petal background but with simple, unshaded petals.

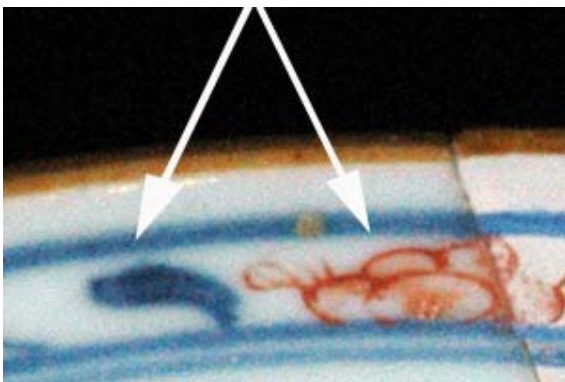
**Stylistic Genre:** The genre for this stylistic element depends on a combination of decorative technique, color, and element.

**Stylistic Genre:** Handpainted Blue

**Related Stylistic Element Data:**

| DecTech                  | Color                     | Sty. Element               | Motif                 |
|--------------------------|---------------------------|----------------------------|-----------------------|
| Painted, under free hand | Purple-Blue, Intense Dark | Floral, radiating bloom 01 | Stacked Combination A |

**Floral, radiating bloom 02**



Half of a flower blooming from or growing out of a band. A radiating bloom may take many forms. It may be drawn on a plain background with detailed petals and leaves as shown, or it may be drawn with a flower petal background with simple, unshaded petals.

**Stylistic Genre:** The genre for this stylistic element depends on a combination of decorative technique, color, and element.

**Stylistic Genre:** Overglaze, handpainted

**Related Stylistic Element Data:**

| DecTech                  | Color                     | Sty. Element               | Motif                  |
|--------------------------|---------------------------|----------------------------|------------------------|
| Painted, under free hand | Purple-Blue, Intense Dark | Floral, radiating bloom 02 | Adjacent Combination A |
| Painted, over free hand  | Red, Intense Medium       | Floral, radiating bloom 02 | Adjacent Combination A |

**Fluted**



A fluted stylistic element is a molded part of the vessel that has channels or depressions. Fluting is best thought of as long channels or depressions as opposed to ribbing, which is defined as long raised ridges or bumps.

**Stylistic Genre:** None (leave field blank)

**Stylistic Genre:** None (leave field blank)

**Related Stylistic Element Data:**

| DecTech | Color            | Sty. Element | Motif        |
|---------|------------------|--------------|--------------|
| Molded  | No Applied Color | Fluted       | Individual A |

**Folded Rim**



Seen primarily on Native American sherds. A thickened rim created by added/applied clay.

**Stylistic Genre:** None (leave field blank)

**Stylistic Genre:** None (leave field blank)

**Related Stylistic Element Data:**

| DecTech      | Color            | Sty. Element | Motif        |
|--------------|------------------|--------------|--------------|
| Applied Clay | No Applied Color | Folded Rim   | Individual A |

**Fruit**



Use this term to describe any stylistic element that represents fruit. Some examples of fruit to the left a pineapple and a peach-like fruit.

**Stylistic Genre:** The genre for this stylistic element depends on a combination of decorative technique, color, and element.

**Stylistic Genre:** Polychrome, warm

**Related Stylistic Element Data:**

| DecTech                  | Color                      | Sty. Element | Motif        |
|--------------------------|----------------------------|--------------|--------------|
| Painted, under free hand | Yellow-Red, Muted Dark     | Fruit        | Individual A |
| Painted, under free hand | Yellow-Red, Intense Medium | Fruit        | Individual A |

**Garland 01**



Garland 1 is a delicate botanical garland that undulates around a thin band, which encircles the vessel. Two thickly painted leaves radiate from the undulating garland and are interspersed with feathery leaves.

**Stylistic Genre:** The genre for this stylistic element depends on a combination of decorative technique, color, and element.

**Stylistic Genre:** Polychrome, warm

**Related Stylistic Element Data:**

| DecTech                  | Color                      | Sty. Element | Motif        |
|--------------------------|----------------------------|--------------|--------------|
| Painted, under free hand | Green-Yellow, Muted Medium | Garland 01   | Individual A |
| Painted, under free hand | Yellow, Intense Light      | Garland 01   | Individual A |
| Painted, under free hand | Yellow, Muted Dark         | Garland 01   | Individual A |
| Painted, under free hand | Yellow, Muted Medium       | Garland 01   | Individual A |

**Garland 02**



Garland 2 is a floral garland that undulates around a thin band, which encircles the vessel. A larger blossom attached to the thin band is flanked on either side by stylized, smaller blossoms and two thickly painted leaves.

**Stylistic Genre:** The genre for this stylistic element depends on a combination of decorative technique, color, and element.

**Stylistic Genre:** Polychrome, warm

**Related Stylistic Element Data:**

| DecTech                  | Color                      | Sty. Element | Motif        |
|--------------------------|----------------------------|--------------|--------------|
| Painted, under free hand | Yellow-Red, Intense Medium | Garland 02   | Individual A |
| Painted, under free hand | Green-Yellow, Muted Medium | Garland 02   | Individual A |
| Painted, under free hand | Purple-Blue, Intense Dark  | Garland 02   | Individual A |
| Painted, under free hand | Purple-Blue, Intense Dark  | Garland 02   | Individual A |



**Garland 03**



Multiple thin lines coming off of an undulating botanical garland gives Garland 3 a fern-like quality. Simultaneously, a strand of connected color beads runs through the undulating band.

**Stylistic Genre:** The genre for this stylistic element depends on a combination of decorative technique, color, and element.

**Stylistic Genre:** Polychrome, warm

**Related Stylistic Element Data:**

| DecTech                  | Color                      | Sty. Element | Motif        |
|--------------------------|----------------------------|--------------|--------------|
| Painted, under free hand | Yellow-Red, Intense Medium | Garland 03   | Individual A |
| Painted, under free hand | Yellow, Muted Dark         | Garland 03   | Individual A |
| Painted, under free hand | Purple-Blue, Intense Dark  | Garland 03   | Individual A |

**Garland 04**



Garland 4 is characterized by a blue undulating line that has small mustard colored leaves and large, feathery green foliage emanating from the line.

**Stylistic Genre:** The genre for this stylistic element depends on a combination of decorative technique, color, and element.

**Stylistic Genre:** Polychrome, warm

**Related Stylistic Element Data:**

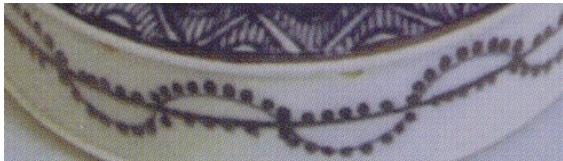
| DecTech                  | Color                      | Sty. Element | Motif        |
|--------------------------|----------------------------|--------------|--------------|
| Painted, under free hand | Yellow-Red, Intense Medium | Garland 04   | Individual A |
| Painted, under free hand | Yellow, Muted Medium       | Garland 04   | Individual A |
| Painted, under free hand | Purple-Blue, Intense Dark  | Garland 04   | Individual A |

**Garland 05**



Garland 5 is characterized by closely-spaced hatch marks or solid circles attached to a undulating band.

**Stylistic Genre:** The genre for this stylistic element depends on a combination of decorative technique, color, and element.



**Stylistic Genre:** Polychrome, warm

**Related Stylistic Element Data:**

| DecTech                  | Color                    | Sty. Element | Motif        |
|--------------------------|--------------------------|--------------|--------------|
| Painted, under free hand | Yellow-Red, Muted Medium | Garland 05   | Individual A |

**Stylistic Genre:** Handpainted Blue

**Related Stylistic Element Data:**

| DecTech                  | Color                     | Sty. Element | Motif        |
|--------------------------|---------------------------|--------------|--------------|
| Painted, under free hand | Purple-Blue, Intense Dark | Garland 05   | Individual A |

**Garland 06**



Garland 6 is characterized by an undulating line, with an alternating pattern of a feather-like leaf followed by three leaves on each side: two dark colored with one yellow leaf in the middle.

**Stylistic Genre:** The genre for this stylistic element depends on a combination of decorative technique, color, and element.

**Stylistic Genre:** Polychrome, warm

**Related Stylistic Element Data:**

| DecTech                  | Color                 | Sty. Element | Motif        |
|--------------------------|-----------------------|--------------|--------------|
| Painted, under free hand | Yellow, Intense Light | Garland 06   | Individual A |
| Painted, under free hand | Yellow, Muted Dark    | Garland 06   | Individual A |

**Garland 07**



Garland 7 is characterized by an undulating line that forms a stylized “stem” with alternating flower elements that extend from it. Two green leaves extend from it, alternating with three small blue circular “blooms.” A solid line bisects the garland horizontally. Both this line as well as the garland are regularly interrupted with a blue X. A “starburst” element is also part of the element; its exact placement is not clear.

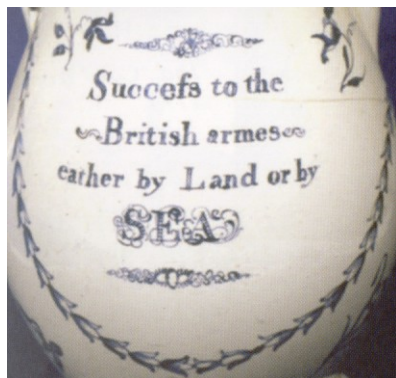
**Stylistic Genre:** The genre for this stylistic element depends on a combination of decorative technique, color, and element.

**Stylistic Genre:** Polychrome, warm

**Related Stylistic Element Data:**

| DecTech                  | Color                        | Sty. Element | Motif        |
|--------------------------|------------------------------|--------------|--------------|
| Painted, under free hand | Green-yellow, Intense Medium | Garland 07   | Individual A |
| Painted, under free hand | Yellow, Muted Dark           | Garland 07   | Individual A |
| Painted, under free hand | Blue, Intense Medium         | Garland 07   | Individual A |

**Garland 08**



A band of connected trumpet-shaped, three-lobed flowers oriented in one direction, though the direction may change at a central point. In this example, the garland forms a meandering frame around a central text or scene.

**Stylistic Genre:** The genre for this stylistic element depends on a combination of decorative technique, color, and element.

**Stylistic Genre:** Handpainted Blue

**Related Stylistic Element Data:**

| DecTech                  | Color                   | Sty. Element | Motif        |
|--------------------------|-------------------------|--------------|--------------|
| Painted, under free hand | Purple-Blue, Muted Dark | Garland 08   | Individual A |

### Garland 09



Composed of a central band (made up of connected ovals) with a meandering band atop it. Various floral elements extend from the meandering band, punctuated by symmetrical radial flowers at central points. In this example the garland forms a circular frame around central text.

**Stylistic Genre:** The genre for this stylistic element depends on a combination of decorative technique, color, and element.

**Stylistic Genre:** Handpainted Blue

**Related Stylistic Element Data:**

| DecTech                  | Color                   | Sty. Element | Motif        |
|--------------------------|-------------------------|--------------|--------------|
| Painted, under free hand | Purple-Blue, Muted Dark | Garland 09   | Individual A |

### Garland 10



A double plain band with a meandering band atop it. The meandering band is composed of closely-spaced chevron elements oriented in the same direction. A single large dot is alternated with the meandering band, placed in the blank spaces between its peaks and troughs.

**Stylistic Genre:** The genre for this stylistic element depends on a combination of decorative technique, color, and element.

**Stylistic Genre:** Handpainted Blue

**Related Stylistic Element Data:**

| DecTech                  | Color                   | Sty. Element | Motif        |
|--------------------------|-------------------------|--------------|--------------|
| Painted, under free hand | Purple-Blue, Muted Dark | Garland 10   | Individual A |

### Garland 11



A central plain band with a meandering band atop it. Three-part floral elements extend from curved “stems” oriented in one direction off of the meandering band at close intervals.

**Stylistic Genre:** The genre for this stylistic element depends on a combination of decorative technique, color, and element.

**Stylistic Genre:** Handpainted Blue

**Related Stylistic Element Data:**

| DecTech                  | Color                   | Sty. Element | Motif        |
|--------------------------|-------------------------|--------------|--------------|
| Painted, under free hand | Purple-Blue, Muted Dark | Garland 11   | Individual A |

### Garland 12



A single plain band with a meandering band atop it. The meandering band is composed of closely-spaced “leaves” oriented in the same direction. A three-part stacked half-circle element is alternated with the meandering band, placed in the blank spaces between its peaks and troughs

**Stylistic Genre:** The genre for this stylistic element depends on a combination of decorative technique, color, and element.

**Stylistic Genre:** Handpainted Blue

**Related Stylistic Element Data:**

| DecTech                  | Color            | Sty. Element | Motif        |
|--------------------------|------------------|--------------|--------------|
| Painted, under free hand | Blue, Muted Dark | Garland 12   | Individual A |

**Garland 13**



Garland 13 is characterized by an undulating solid wavy line with dots on the inside of each curve. The dots appear on both sides of the wavy line. This wavy line is similar to Wavy Band 07. In addition, sprigs comprised of brown lines and green ovals (leaves) are present in the curves created by the undulating line.

**Stylistic Genre:** The genre for this stylistic element depends on a combination of decorative technique, color, and element.

**Stylistic Genre:** Polychrome, warm

**Related Stylistic Element Data:**

| DecTech                  | Color                      | Sty. Element | Motif        |
|--------------------------|----------------------------|--------------|--------------|
| Painted, under free hand | Green-yellow, Muted Medium | Garland 08   | Individual A |
| Painted, under free hand | Yellow-Red, Intense Medium | Garland 08   | Individual A |
| Painted, under free hand | Purple-Blue, Intense Dark  | Garland 08   | Individual A |
| Painted, under free hand | Green-Yellow, Muted Medium | Garland 08   | Individual A |

**Garland, unid.**



Garland, unid. should be used when small, unidentifiable portions of a garland are present on a sherd. It is often the case that one can identify the decoration as a garland but cannot specify which exact garland is represented. Garland, unid. should be used in these cases.

**Stylistic Genre:** The genre for this stylistic element depends on a combination of decorative technique, color, and element.

**Stylistic Genre:** Polychrome, warm

**Related Stylistic Element Data:**

| DecTech                  | Color                     | Sty. Element   | Motif        |
|--------------------------|---------------------------|----------------|--------------|
| Painted, under free hand | Purple-Blue, Intense Dark | Garland, unid. | Individual A |
| Painted, under free hand | Yellow, Intense Medium    | Garland, unid. | Individual A |

**Geometric Band 01**



Geometric Band 01 is a chain of large solid triangles linked at their base. A thin line outlines the triangle. Two bands, a double band above and a single band below, enclose the triangles.

**Stylistic Genre:** The genre for this stylistic element depends on a combination of decorative technique, color, and element.

**Stylistic Genre:** None (leave field blank)

**Related Stylistic Element Data:**

| DecTech                  | Color                      | Sty. Element      | Motif        |
|--------------------------|----------------------------|-------------------|--------------|
| Painted, under free hand | Yellow-Red, Intense Medium | Geometric Band 01 | Individual A |

**Geometric Band 02**



Geometric Band 02 combines garland and trellis motifs to form a neoclassical geometric band. Thin diagonal double lines that form a V pattern with a small dot at the base are bound between two thinly painted bands. A simple leaf garland weaves its way through the double-line V's.

**Stylistic Genre:** The genre for this stylistic element depends on a combination of decorative technique, color, and element.

**Stylistic Genre:** Handpainted Blue

**Related Stylistic Element Data:**

| DecTech                  | Color                     | Sty. Element      | Motif        |
|--------------------------|---------------------------|-------------------|--------------|
| Painted, under free hand | Purple-Blue, Intense Dark | Geometric Band 02 | Individual A |

**Geometric Band 03**



This band is a chain of large ovals. Each oval has a small cluster of four dots in the center. Three thin lines are also painted between each oval.

**Stylistic Genre:** The genre for this stylistic element depends on a combination of decorative technique, color, and element.

**Stylistic Genre:** Handpainted Blue

**Related Stylistic Element Data:**

| DecTech                  | Color                     | Sty. Element      | Motif        |
|--------------------------|---------------------------|-------------------|--------------|
| Painted, under free hand | Purple-Blue, Intense Dark | Geometric Band 03 | Individual A |

### Geometric Band 04



This band is characterized by two intertwined lines that form a fluid diamond and oval pattern. Geometric Band 04 is the same as Geometric Band 08 except that painted two solid lines bound it.

**Stylistic Genre:** The genre for this stylistic element depends on a combination of decorative technique, color, and element.

**Stylistic Genre:** Handpainted Blue

**Related Stylistic Element Data:**

| DecTech                  | Color                     | Sty. Element      | Motif        |
|--------------------------|---------------------------|-------------------|--------------|
| Painted, under free hand | Purple-Blue, Intense Dark | Geometric Band 04 | Individual A |

### Geometric Band 05



A solid blue zigzag line runs along the proximal rim. It is enclosed by two solid bands. In the open space created by the zigzag running between two bands, a series of angled lines fills in the empty space.

**Stylistic Genre:** The genre for this stylistic element depends on a combination of decorative technique, color, and element.

**Stylistic Genre:** Handpainted Blue

**Related Stylistic Element Data:**

| DecTech                  | Color                     | Sty. Element      | Motif        |
|--------------------------|---------------------------|-------------------|--------------|
| Painted, under free hand | Purple-Blue, Intense Dark | Geometric Band 05 | Individual A |

### Geometric Band 06



Geometric Band 06 is characterized by repeating double lines with thin lines extending perpendicularly from these diagonal or vertical lines. A small space separates a new set of diagonal and perpendicular lines. The band is enclosed by two horizontal lines.

**Stylistic Genre:** The genre for this stylistic element depends on a combination of decorative technique, color, and element.

**Stylistic Genre:** Handpainted Blue

**Related Stylistic Element Data:**

| DecTech                  | Color                     | Sty. Element      | Motif        |
|--------------------------|---------------------------|-------------------|--------------|
| Painted, under free hand | Purple-Blue, Intense Dark | Geometric Band 06 | Individual A |



### Geometric Band 07



This band is similar to Geometric Band 05. Alternating triangles are filled with diagonal lines. There is a small white space separating each triangle. This is primarily seen on porcelain.

**Stylistic Genre:** The genre for this stylistic element depends on a combination of decorative technique, color, and element.

**Stylistic Genre:** Handpainted Blue

**Related Stylistic Element Data:**

| DecTech                  | Color                     | Sty. Element      | Motif        |
|--------------------------|---------------------------|-------------------|--------------|
| Painted, under free hand | Purple-Blue, Intense Dark | Geometric Band 07 | Individual A |

### Geometric Band 08



Geometric Band 08 is the same as Geometric Band 04 except that it is not bound between two lines. Two intertwined lines that form a fluid diamond and oval pattern characterize this band.

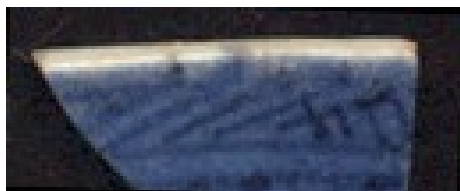
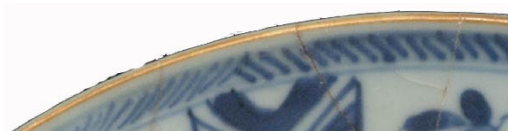
**Stylistic Genre:** The genre for this stylistic element depends on a combination of decorative technique, color, and element.

**Stylistic Genre:** Handpainted Blue

**Related Stylistic Element Data:**

| DecTech                  | Color                     | Sty. Element      | Motif        |
|--------------------------|---------------------------|-------------------|--------------|
| Painted, under free hand | Purple-Blue, Intense Dark | Geometric Band 08 | Individual A |

### Geometric Band 09



Geometric Band 09 is characterized by repeating diagonal lines that are drawn in one direction of a section of the rim, and then drawn in the opposite direction. This band can either have a shaded background or no background.

**Stylistic Genre:** The genre for this stylistic element depends on a combination of decorative technique, color, and element.

**Stylistic Genre:** Handpainted Blue

**Related Stylistic Element Data:**

| DecTech                  | Color                     | Sty. Element      | Motif                 |
|--------------------------|---------------------------|-------------------|-----------------------|
| Painted, under free hand | Purple-Blue, Intense Dark | Geometric Band 09 | Stacked Combination A |

**Geometric Band 10**



Geometric Band 10 is characterized by a single row of fish roe suspended from a plain band. Extending from the row of fish roe are long and narrow triangles, which reach, but do not necessarily touch, a double band. Finally, overlapping half-circles or arcs suspended from the bottom of the line (Half-Circle Band 3).

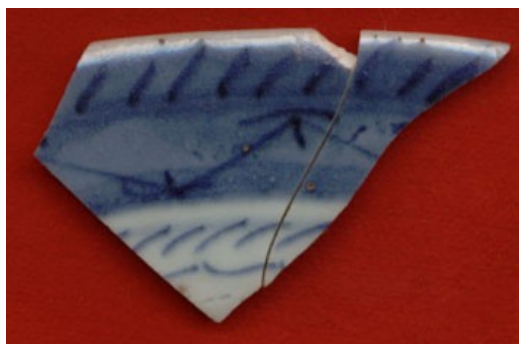
**Stylistic Genre:** The genre for this stylistic element depends on a combination of decorative technique, color, and element.

**Stylistic Genre:** Handpainted Blue

**Related Stylistic Element Data:**

| DecTech                  | Color                     | Sty. Element      | Motif        |
|--------------------------|---------------------------|-------------------|--------------|
| Painted, under free hand | Purple-Blue, Intense Dark | Geometric Band 10 | Individual A |

**Geometric Band 11**



Geometric Band 11 is characterized by repeating diagonal lines that are drawn in one direction (as far as one can tell). The band can have a shaded background or no background.

**Stylistic Genre:** The genre for this stylistic element depends on a combination of decorative technique, color, and element.

**Stylistic Genre:** Handpainted Blue

**Related Stylistic Element Data:**

| DecTech                  | Color                     | Sty. Element      | Motif                 |
|--------------------------|---------------------------|-------------------|-----------------------|
| Painted, under free hand | Purple-Blue, Intense Dark | Geometric Band 11 | Stacked Combination A |
| Painted, under free hand | Purple-Blue, Muted Dark   | Geometric Band 11 | Stacked Combination A |
| Painted, under free hand | Purple-Blue, Intense Dark | Trellis Band 26   | Stacked Combination A |
| Painted, under free hand | Purple-Blue, Muted Dark   | Trellis Band 26   | Stacked Combination A |
| Painted, under free hand | Purple-Blue, Intense Dark | Cloud Band 01     | Stacked Combination A |

**Geometric Band 12**



This detailed band is composed of several different stylistic elements. The band is broken into two major design sections. The bottom design portion of the band is really a Dot Band 1, although this should not be cataloged separately. It should be considered part of Geometric Band 12's design. The upper portion of the band is filled with a large fish roe motif, which is connected to the next fish roe by a dotted line. There are single dots flanking either side of the dotted line.

**Stylistic Genre:** The genre for this stylistic element depends on a combination of decorative technique, color, and element.

**Stylistic Genre:** Polychrome, warm

**Related Stylistic Element Data:**

| DecTech                  | Color                       | Sty. Element      | Motif        |
|--------------------------|-----------------------------|-------------------|--------------|
| Painted, under free hand | Yellow-Red, Muted Medium    | Geometric Band 12 | Individual A |
| Painted, under free hand | Purple-Blue, Intense Medium | Geometric Band 12 | Individual A |
| Painted, under free hand | Yellow, Muted Medium        | Geometric Band 12 | Individual A |

**Geometric Band 13**



Short, vertical, parallel lines with or without shading in the background.

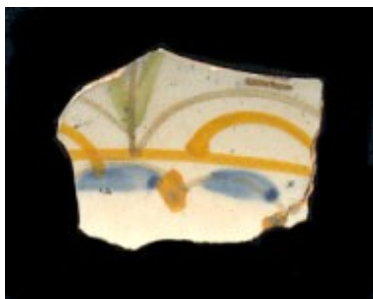
**Stylistic Genre:** The genre for this stylistic element depends on a combination of decorative technique, color, and element.

**Stylistic Genre:** Handpainted Blue

**Related Stylistic Element Data:**

| DecTech                  | Color                     | Sty. Element      | Motif        |
|--------------------------|---------------------------|-------------------|--------------|
| Painted, under free hand | Purple-Blue, Intense Dark | Geometric Band 13 | Individual A |
| Painted, under free hand | Purple-Blue, Muted Dark   | Geometric Band 13 | Individual A |

**Geometric Band 14**



Our understanding of this band is still incomplete. We do not know what the top portion of the decoration looks like but the base is a series of repeating half-circle arcs with dots and blue lozenges in the half-circles. Above the half-circles are repeating horizontal and vertical lines.

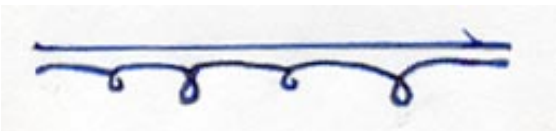
**Stylistic Genre:** The genre for this stylistic element depends on a combination of decorative technique, color, and element.

**Stylistic Genre:** Polychrome, warm

**Related Stylistic Element Data:**

| DecTech                  | Color                       | Sty. Element      | Motif        |
|--------------------------|-----------------------------|-------------------|--------------|
| Painted, under free hand | Yellow-Red, Muted Dark      | Geometric Band 14 | Individual A |
| Painted, under free hand | Yellow-Red, Intense Medium  | Geometric Band 14 | Individual A |
| Painted, under free hand | Purple-Blue, Intense Medium | Geometric Band 14 | Individual A |
| Painted, under free hand | Green-Yellow, Muted Medium  | Geometric Band 14 | Individual A |

**Geometric Band 15**



Underneath a single, solid line is an outstretched curlicue. It is similar to a half-circle band with small loops at the point where one half circle meets the next.

**Stylistic Genre:** The genre for this stylistic element depends on a combination of decorative technique, color, and element.

**Stylistic Genre:** Overglaze, handpainted

**Related Stylistic Element Data:**

| DecTech                 | Color          | Sty. Element      | Motif        |
|-------------------------|----------------|-------------------|--------------|
| Painted, over free hand | Unidentifiable | Geometric Band 15 | Individual A |

**Geometric Band 16**



This band consists of half circles (painted blue, here) alternating with 5-pronged dogtooth elements (painted red, here). There is a single solid line below the band in this example.

**Stylistic Genre:** The genre for this stylistic element depends on a combination of decorative technique, color, and element.

**Stylistic Genre:** Polychrome, other

**Related Stylistic Element Data:**

| DecTech                  | Color                     | Sty. Element      | Motif        |
|--------------------------|---------------------------|-------------------|--------------|
| Painted, under free hand | Purple-Blue, Intense Dark | Geometric Band 16 | Individual A |
| Painted, under free hand | Red, Intense Medium       | Geometric Band 16 | Individual A |

**Geometric Band 17**



Repeated impressed wavy lines that run vertically to the vessel's body characterize this band.

Note that this band is similar to Roulette Band 04, but the repeated elements are vertical for Roulette Band 04.

**Stylistic Genre:** None (leave field blank)

**Stylistic Genre:** None (leave field blank)

**Related Stylistic Element Data:**

| DecTech   | Color            | Sty. Element      | Motif        |
|-----------|------------------|-------------------|--------------|
| Rouletted | No Applied Color | Geometric Band 17 | Individual A |

**Geometric Band 18**



This band is comprised of a series of horizontally oriented ovals, with a diamond at each oval intersection.

**Stylistic Genre:** The genre for this stylistic element depends on a combination of decorative technique, color, and element.

**Stylistic Genre:** Overglaze, handpainted

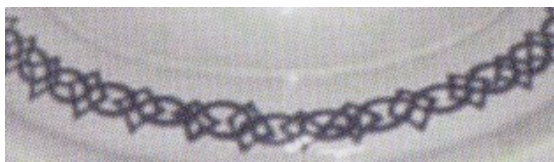
**Related Stylistic Element Data:**

| DecTech                 | Color        | Sty. Element      | Motif        |
|-------------------------|--------------|-------------------|--------------|
| Painted, over free hand | Unidentified | Geometric Band 18 | Individual A |

**Stylistic Genre:** Handpainted Blue

**Related Stylistic Element Data:**

| DecTech                  | Color                     | Sty. Element      | Motif        |
|--------------------------|---------------------------|-------------------|--------------|
| Painted, under free hand | Purple-Blue, Intense Dark | Geometric Band 18 | Individual A |



**Geometric Band 19**



A series of backwards S's bisected with horizontal lines.

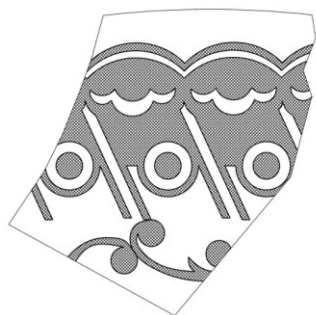
**Stylistic Genre:** Slipware, factory made

**Stylistic Genre:** Slipware, factory made

**Related Stylistic Element Data:**

| DecTech      | Color                  | Sty. Element      | Motif        |
|--------------|------------------------|-------------------|--------------|
| Slip, inlaid | Yellow-red, muted dark | Geometric Band 19 | Individual A |

**Geometric Band 20**



This band consists of arches on top of a series of swags, which are on top of diagonal lines and circles. Commonly found on overglazed porcellaneous porcelains.

**Stylistic Genre:** Overglaze, handpainted

**Stylistic Genre:** Overglaze, handpainted

**Related Stylistic Element Data:**

| DecTech                 | Color        | Sty. Element      | Motif        |
|-------------------------|--------------|-------------------|--------------|
| Painted, over free hand | Unidentified | Geometric Band 20 | Individual A |

**Geometric Band 21**



A series of opposite triangles separated by diagonal spaces. Inside the triangles are half circle shapes with radiating lines running out to the enclosing edges of the triangle. Commonly found on handpainted pearlware.

**Stylistic Genre:** The genre for this stylistic element depends on a combination of decorative technique, color, and element.

**Stylistic Genre:** Handpainted Blue

**Related Stylistic Element Data:**

| DecTech                  | Color                     | Sty. Element      | Motif        |
|--------------------------|---------------------------|-------------------|--------------|
| Painted, under free hand | Purple-Blue, Intense Dark | Geometric Band 21 | Individual A |

### Geometric Band 22



This band consists of thick, rectangular lines aligned perpendicular to the rim of the sherd. The space in between lines is shaded. It is between two bands of small, bead-like dots of paint.

**Stylistic Genre:** The genre for this stylistic element depends on a combination of decorative technique, color, and element.

**Stylistic Genre:** Overglaze, handpainted

#### Related Stylistic Element Data:

| DecTech                 | Color               | Sty. Element      | Motif        |
|-------------------------|---------------------|-------------------|--------------|
| Painted, over free hand | Yellow, Muted Light | Geometric Band 22 | Individual A |

### Geometric Band 23



This band consists of a series of repeated lines of a group of vertical lines arrayed in a fan shape.

**Stylistic Genre:** This element is executed using engine turning and is therefore considered a Factory-made Slipware.

**Stylistic Genre:** Slipware, factory made

#### Related Stylistic Element Data:

| DecTech                      | Color            | Sty. Element      | Motif        |
|------------------------------|------------------|-------------------|--------------|
| Incised, lathe/engine turned | No applied color | Geometric Band 23 | Individual A |

### Geometric Band 24



A band of squiggly, alternating colors.

**Stylistic Genre:** Polychrome, warm

**Stylistic Genre:** Polychrome, warm

#### Related Stylistic Element Data:

| DecTech                  | Color                      | Sty. Element      | Motif                  |
|--------------------------|----------------------------|-------------------|------------------------|
| Painted, under free hand | Purple-Blue, Intense Dark  | Geometric Band 24 | Individual, repeated A |
| Painted, under free hand | Yellow-Red, Intense Medium | Geometric Band 24 | Individual, repeated A |

**Geometric Band 25**



Geometric shapes arrayed in rectangular groups with the voids in-between forming an 'X' and four-lobe element.

**Stylistic Genre:** Slipware, factory made

**Stylistic Genre:** Slipware, factory made

**Related Stylistic Element Data:**

| DecTech      | Color                  | Sty. Element      | Motif        |
|--------------|------------------------|-------------------|--------------|
| Slip, inlaid | Yellow-Red, Muted Dark | Geometric Band 25 | Individual A |

**Geometric Band 26**



Band consisting of alternating highs-and-lows framed by wavy/scalloped bands.

**Stylistic Genre:** Slipware, factory made

**Stylistic Genre:** Slipware, factory made

**Related Stylistic Element Data:**

| DecTech      | Color                    | Sty. Element      | Motif        |
|--------------|--------------------------|-------------------|--------------|
| Slip, inlaid | Yellow-Red, Intense Dark | Geometric Band 26 | Individual A |

**Geometric Band 27**



Series of closely-spaced bands of primarily straight lines periodically interpreted by upward arcs.

**Stylistic Genre:** Slipware, factory made

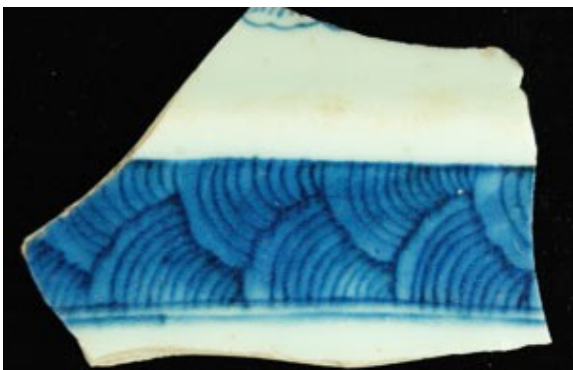
**Stylistic Genre:** Slipware, factory made

**Related Stylistic Element Data:**

| DecTech      | Color          | Sty. Element      | Motif        |
|--------------|----------------|-------------------|--------------|
| Slip, inlaid | Neutrals, Dark | Geometric Band 27 | Individual A |



**Geometric Band 28**



A band consisting of overlapping sets of concentric circles (similar-looking to tree rings or scales). The outermost band of each set appears to be slightly wider than the rest. Primarily seen on porcelain.

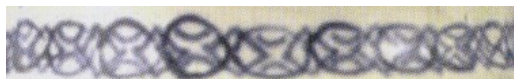
**Stylistic Genre:** The genre for this stylistic element depends on a combination of decorative technique, color, and element.

**Stylistic Genre:** Handpainted Blue

**Related Stylistic Element Data:**

| DecTech                  | Color                     | Sty. Element      | Motif        |
|--------------------------|---------------------------|-------------------|--------------|
| Painted, under free hand | Purple-Blue, Intense Dark | Geometric Band 28 | Individual A |

**Geometric Band 29**



A band consisting of connected open circles. An outlined “X” (no fill) appears in the center of each circle.

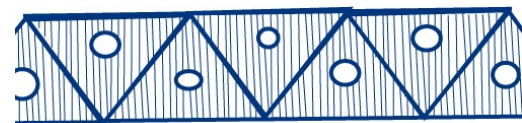
**Stylistic Genre:** The genre for this stylistic element depends on a combination of decorative technique, color, and element.

**Stylistic Genre:** Handpainted Blue

**Related Stylistic Element Data:**

| DecTech                  | Color                   | Sty. Element      | Motif        |
|--------------------------|-------------------------|-------------------|--------------|
| Painted, under free hand | Purple-Blue, Muted Dark | Geometric Band 29 | Individual A |

**Geometric Band 30**



A band formed by interlocking triangles alternating in orientation. Each triangle has an open circle in the center of it. Closely spaced vertical diagonal lines form a background for the band.

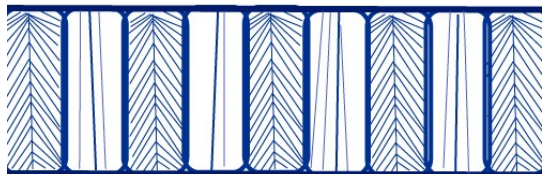
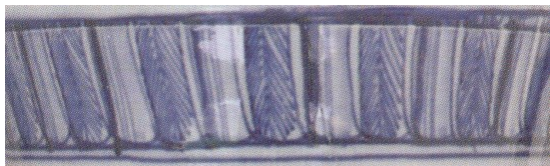
**Stylistic Genre:** The genre for this stylistic element depends on a combination of decorative technique, color, and element.

**Stylistic Genre:** Handpainted Blue

**Related Stylistic Element Data:**

| DecTech                  | Color                   | Sty. Element      | Motif        |
|--------------------------|-------------------------|-------------------|--------------|
| Painted, under free hand | Purple-Blue, Muted Dark | Geometric Band 30 | Individual A |

**Geometric Band 31**



A band formed by a series of connected “panels” or vertically oriented rectangles. The fill of the panels alternates between two patterns:

1. central vertical line with chevrons extending in one direction, resembling a feather
2. central vertical line with lighter “freehand” vertical lines on either side.

**Stylistic Genre:** The genre for this stylistic element depends on a combination of decorative technique, color, and element.

**Stylistic Genre:** Handpainted Blue

**Related Stylistic Element Data:**

| DecTech                  | Color                   | Sty. Element      | Motif        |
|--------------------------|-------------------------|-------------------|--------------|
| Painted, under free hand | Purple-Blue, Muted Dark | Geometric Band 31 | Individual A |

**Geometric Band 33**



A chain of connected ovals with a dot inside each one.

**Stylistic Genre:** The genre for this stylistic element depends on a combination of decorative technique, color, and element.

**Stylistic Genre:** Handpainted Blue

**Related Stylistic Element Data:**

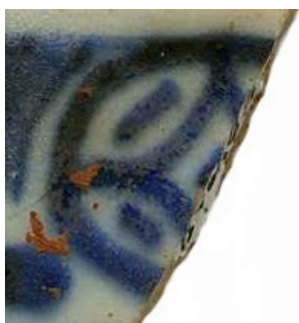
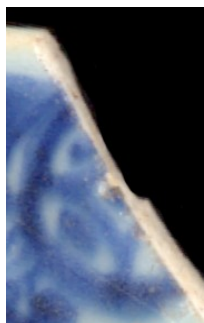
| DecTech                  | Color                     | Sty. Element      | Motif        |
|--------------------------|---------------------------|-------------------|--------------|
| Painted, under free hand | Purple-Blue, Intense Dark | Geometric Band 33 | Individual A |

**Geometric Band, unid.**

This classification should be used when small, unidentifiable portions of a geometric band are present on a sherd. It is often the case that one can identify the decoration as a geometric band but cannot specify which exact geometric band is represented. Geometric Band, unid. should be used in these cases.

**Stylistic Genre:** The genre for this stylistic element depends on a combination of decorative technique, color, and element.

**Geometric Circle**



This is an open circle with a diamond in the center, forming 5 compartments (including the center of the diamond). Each compartment has a dot in the middle.

**Stylistic Genre:** The genre for this stylistic element depends on a combination of decorative technique, color, and element.

**Stylistic Genre:** Handpainted Blue

**Related Stylistic Element Data:**

| DecTech                  | Color                     | Sty. Element     | Motif        |
|--------------------------|---------------------------|------------------|--------------|
| Painted, under free hand | Purple-Blue, Intense Dark | Geometric Circle | Individual A |

**Geometric Column 01**



Geometric Column 1 is characterized by a vertical band, or column, of solid diamonds that have a small open circle of white (the color of the body) in their centers. Thinly painted crossed lines separate each diamond.

**Stylistic Genre:** The genre for this stylistic element depends on a combination of decorative technique, color, and element.

**Stylistic Genre:** Handpainted Blue

**Related Stylistic Element Data:**

| DecTech                  | Color                     | Sty. Element       | Motif                 |
|--------------------------|---------------------------|--------------------|-----------------------|
| Painted, under free hand | Purple-Blue, Intense Dark | Geometric Column 1 | Stacked Combination 1 |

**Geometric, unid.**

Use this term when you have an unidentifiable geometric element. If you can tell that it is a band, use Geometric Band, unid. instead.

**Stylistic Genre:** The genre for this stylistic element depends on a combination of decorative technique, color, and element.

**Granulated Band**



Seen most often on dry-bodied stonewares such as Black Basalt and Rosso Antico, Granulated Band 1 is an engine-turned band of repeating small, slightly square impressions.

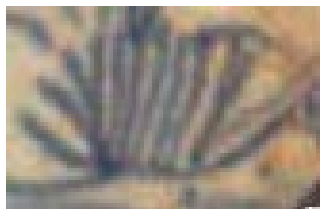
**Stylistic Genre:** None (leave field blank)

**Stylistic Genre:** None (leave field blank)

**Related Stylistic Element Data:**

| <b>DecTech</b>               | <b>Color</b>     | <b>Sty. Element</b> | <b>Motif</b> |
|------------------------------|------------------|---------------------|--------------|
| Incised, lathe/engine turned | No Applied Color | Granulated Band     | Individual A |

## Grass



Grass elements can range from short grass tufts (top picture) to long, curved grass with tufts at the end (bottom picture). Seen on both painted porcelains and earthenwares, grass is usually a grouping of thin lines that can be short and straight or long and curved and anywhere in-between.

**Stylistic Genre:** The genre for this stylistic element depends on a combination of decorative technique, color, and element.

**Stylistic Genre:** Handpainted Blue

**Related Stylistic Element Data:**

| DecTech                  | Color                     | Sty. Element | Motif        |
|--------------------------|---------------------------|--------------|--------------|
| Painted, under free hand | Purple-Blue, Intense Dark | Grass        | Individual A |

**Grasses and Leaves Molded Edge**



A molded band named “Grass & Daisies ” by the staff at the Maryland Archaeological Conservation Laboratory (see <http://www.jefpat.org/diagnostic/Post-Colonial%20Ceramics/Shell%20Edged%20Wares/Embossed%20thumbnails.htm>).

**Stylistic Genre:** Molded Edge Decoration, other

**Stylistic Genre:** Molded Edge Decoration, other

**Related Stylistic Element Data:**

| DecTech                  | Color                     | Sty. Element                   | Motif        |
|--------------------------|---------------------------|--------------------------------|--------------|
| Molded                   | Not Applicable            | Grasses and Leaves Molded Edge | Individual A |
| Painted, under free hand | Purple-Blue, Intense Dark | Grasses and Leaves Molded Edge | Individual A |