




DAACS Stylistic Element Glossary

H-Q

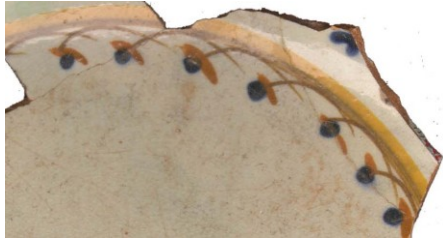
by Beatrix Arendt, Lynsey Bates, Leslie Cooper, Jillian Galle,
Elizabeth Sawyer, Jesse Sawyer, and Karen Smith
Last Updated May 2011

Half-Circle Band 01	4
Half-Circle Band 02	4
Half-Circle Band 03	4
Half-Circle Band 04	5
Half-Circle Band 05	5
Half-Circle Band 06	5
Half-Circle Band 07	6
Half-Circle Band 08	6
Half-Circle Band 09	6
Half-Circle Band 10	7
Half-Circle Band, unid.	7
Heart	7
Herringbone and Bow	8
House	8
Hunt Scene	9
Husk Chain Band 01	9
Husk Chain Band 02	10
Husk Chain Band 03	10
Husk Chain Band 04	11
Husk Chain Band 05	11
Husk Chain Band 06	12
Husk Chain Band 07	12
Husk Chain Band 08	12
Husk Chain Band 09	13
Husk Chain Band 10	14
Husk Chain Band 11	14
Landscape/Hills	15
Lettering	15
Man	16
Marbleized	17
Medallion, GR	18
Medallion, unid.	18
Molded Band 01	18
Molded Band 02	19
Mythical Creature	20
Not Applicable	20
Notched	21
Peacock	22
Plain Band 01	22

Plain Band 02.....	23
Plain Band 03.....	24
Plain Band 04.....	24
Plain Band 05.....	24
Plain Band 06.....	25
Plain Band 07.....	25
Plain Band 08.....	25
Plain Band 09.....	26
Plain Band 10.....	26
Plain Band 11.....	26
Plain Band 12.....	27
Plain Band 13.....	27
Plain Band 14.....	28
Plain Band, unid.....	28
Plain Edge.....	28
Plume, botanical.....	29
Plume, feather.....	29
Queen's Shape 01.....	30
Queen's Shape 02.....	30
Queen's Shape, unid.....	31
Quiver.....	31

Stylistic Element Name and Image	Characteristics	Cataloging Example for the Depicted Sherd											
<p data-bbox="199 170 472 203">Half-Circle Band 01</p> 	<p data-bbox="604 138 1134 267">Seen on both porcelains and earthenwares, this element is characterized by a band of connecting half-circles or arcs.</p> <p data-bbox="604 316 1134 446">Stylistic Genre: The genre for this stylistic element depends on a combination of decorative technique, color, and element.</p>	<p data-bbox="1386 170 1837 203">Stylistic Genre: Handpainted Blue</p> <p data-bbox="1396 243 1827 276">Related Stylistic Element Data:</p> <table border="1" data-bbox="1155 316 2058 422"> <thead> <tr> <th data-bbox="1155 316 1381 349">DecTech</th> <th data-bbox="1381 316 1608 349">Color</th> <th data-bbox="1608 316 1835 349">Sty. Element</th> <th data-bbox="1835 316 2058 349">Motif</th> </tr> </thead> <tbody> <tr> <td data-bbox="1155 349 1381 422">Painted, under free hand</td> <td data-bbox="1381 349 1608 422">Purple-Blue, Intense Dark</td> <td data-bbox="1608 349 1835 422">Half-Circle Band 01</td> <td data-bbox="1835 349 2058 422">Individual A</td> </tr> </tbody> </table>				DecTech	Color	Sty. Element	Motif	Painted, under free hand	Purple-Blue, Intense Dark	Half-Circle Band 01	Individual A
DecTech	Color	Sty. Element	Motif										
Painted, under free hand	Purple-Blue, Intense Dark	Half-Circle Band 01	Individual A										
<p data-bbox="199 568 472 600">Half-Circle Band 02</p> 	<p data-bbox="604 539 1134 747">Seen on both porcelains and earthenwares, this element is characterized by a band of connecting arcs (a Half-Circle Band 1) that have 3 grouped dots that form a triangle at the point of each arc.</p> <p data-bbox="604 787 1134 917">Stylistic Genre: The genre for this stylistic element depends on a combination of decorative technique, color, and element.</p>	<p data-bbox="1386 571 1837 604">Stylistic Genre: Handpainted Blue</p> <p data-bbox="1396 644 1827 677">Related Stylistic Element Data:</p> <table border="1" data-bbox="1155 714 2058 820"> <thead> <tr> <th data-bbox="1155 714 1381 747">DecTech</th> <th data-bbox="1381 714 1608 747">Color</th> <th data-bbox="1608 714 1835 747">Sty. Element</th> <th data-bbox="1835 714 2058 747">Motif</th> </tr> </thead> <tbody> <tr> <td data-bbox="1155 747 1381 820">Painted, under free hand</td> <td data-bbox="1381 747 1608 820">Purple-Blue, Intense Dark</td> <td data-bbox="1608 747 1835 820">Half-Circle Band 02</td> <td data-bbox="1835 747 2058 820">Individual A</td> </tr> </tbody> </table>				DecTech	Color	Sty. Element	Motif	Painted, under free hand	Purple-Blue, Intense Dark	Half-Circle Band 02	Individual A
DecTech	Color	Sty. Element	Motif										
Painted, under free hand	Purple-Blue, Intense Dark	Half-Circle Band 02	Individual A										
<p data-bbox="199 990 472 1023">Half-Circle Band 03</p> 	<p data-bbox="604 961 1134 1169">Suspended from a single band that encircles the entire vessel are repeating overlapping half-circles or arcs. Unlike Half-Circle Band 1 and 2, whose half-circles connect at a point, the ends of these half-circles overlap to form an X.</p> <p data-bbox="604 1209 1134 1339">Stylistic Genre: The genre for this stylistic element depends on a combination of decorative technique, color, and element.</p>	<p data-bbox="1386 993 1837 1026">Stylistic Genre: Handpainted Blue</p> <p data-bbox="1396 1066 1827 1099">Related Stylistic Element Data:</p> <table border="1" data-bbox="1155 1136 2058 1274"> <thead> <tr> <th data-bbox="1155 1136 1381 1169">DecTech</th> <th data-bbox="1381 1136 1608 1169">Color</th> <th data-bbox="1608 1136 1835 1169">Sty. Element</th> <th data-bbox="1835 1136 2058 1169">Motif</th> </tr> </thead> <tbody> <tr> <td data-bbox="1155 1169 1381 1274">Painted, under free hand</td> <td data-bbox="1381 1169 1608 1274">Purple-Blue, Intense Medium</td> <td data-bbox="1608 1169 1835 1274">Half-Circle Band 03</td> <td data-bbox="1835 1169 2058 1274">Individual A</td> </tr> </tbody> </table>				DecTech	Color	Sty. Element	Motif	Painted, under free hand	Purple-Blue, Intense Medium	Half-Circle Band 03	Individual A
DecTech	Color	Sty. Element	Motif										
Painted, under free hand	Purple-Blue, Intense Medium	Half-Circle Band 03	Individual A										

Half-Circle Band 04



Overlapping half-circles are suspended from a dual-colored band. Similar to Half-Circle Band 3, the ends of the half-circles overlap to form an X. One end of each half-circle has a little floral “bud” painted to make the half-circles look like little arching flowers.

Stylistic Genre: The genre for this stylistic element depends on a combination of decorative technique, color, and element.

Stylistic Genre: Polychrome, warm

Related Stylistic Element Data:

DecTech	Color	Sty. Element	Motif
Painted, under free hand	Purple-Blue, Intense Dark	Half-Circle Band 04	Individual A
Painted, under free hand	Yellow-Red, Intense Medium	Half-Circle Band 04	Individual A
Painted, under free hand	Yellow, Intense Light	Half-Circle Band 04	Individual A
Painted, under free hand	Yellow, Muted Medium	Half-Circle Band 04	Individual A

Half-Circle Band 05



This band is identical to Half-Circle Band 1 except that the band of connecting half-circles or arcs is suspended below a single line. The arcs may or may not be attached to the band above it. The picture is a sloppy example.

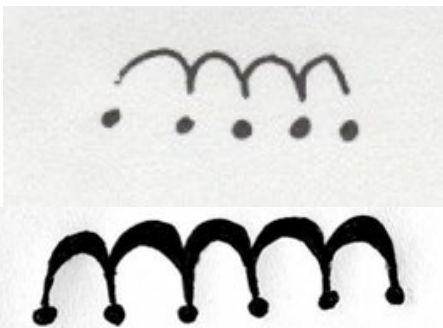
Stylistic Genre: The genre for this stylistic element depends on a combination of decorative technique, color, and element.

Stylistic Genre: Handpainted Blue

Related Stylistic Element Data:

DecTech	Color	Sty. Element	Motif
Painted, under free hand	Purple-Blue, Intense Dark	Half-Circle Band 05	Individual A

Half-Circle Band 06



This band consists of connected half-circles. There’s a solid dot at the end of each half-circle that may or may not be connected to the half-circles.

Stylistic Genre: The genre for this stylistic element depends on a combination of decorative technique, color, and element.

Stylistic Genre: Overglaze, handpainted

Related Stylistic Element Data:

DecTech	Color	Sty. Element	Motif
Painted, over free hand	Unidentifiable	Half-Circle Band 06	Individual A

Half-Circle Band 07



This band is identical to Half-Circle Band 5, except open circles are attached to each point of the arch.

Stylistic Genre: The genre for this stylistic element depends on a combination of decorative technique, color, and element.

Stylistic Genre: Overglaze, handpainted

Related Stylistic Element Data:

DecTech	Color	Sty. Element	Motif
Painted, over free hand	Red, Intense Medium	Half-Circle Band 07	Individual A

Half-Circle Band 08



This band consists of a series of connected half-circles with a series of half-circles below it in a different color.

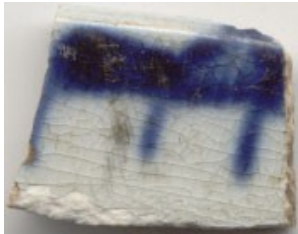
Stylistic Genre: The genre for this stylistic element depends on a combination of decorative technique, color, and element.

Stylistic Genre: Polychrome, other

Related Stylistic Element Data:

DecTech	Color	Sty. Element	Motif
Painted, under free hand	Purple-Blue, Intense Dark	Half-circle Band 08	Individual A
Painted, under free hand	Neutrals, Dark	Half-circle Band 08	Individual A

Half-Circle Band 09



This band consists of a series of solid connected half-circles with a vertical line extending down from each junction.

Stylistic Genre: The genre for this stylistic element depends on a combination of decorative technique, color, and element.

Stylistic Genre: Handpainted Blue

Related Stylistic Element Data:

DecTech	Color	Sty. Element	Motif
Painted, under free hand	Purple-Blue, Intense Dark	Half-circle Band 09	Individual A

Half-Circle Band 10



This band consists of a series of connected half-circles with an inverted triangle passing through the point the half-circles touch. On either side of the apex of the triangles are two lines that along with the apex form a spearhead.

Stylistic Genre: The genre for this stylistic element depends on a combination of decorative technique, color, and element.

Stylistic Genre: Slipware, factory made

Related Stylistic Element Data:

DecTech	Color	Sty. Element	Motif
Slip, inlaid	Yellow-Red, Muted Dark	Half-circle Band 10	Individual A

Half-Circle Band, unid.

Use this term when you have portions of a half-circle band but cannot identify the exact one.

Stylistic Genre: The genre for this stylistic element depends on a combination of decorative technique, color, and element.

Heart



Any representation of a heart, stylized or otherwise. The example seen here is on Westerwald.

Stylistic Genre: The genre for this stylistic element depends on a combination of decorative technique, color, and element.

Stylistic Genre: Blue, molded/stamped/incised

Related Stylistic Element Data:

DecTech	Color	Sty. Element	Motif
Painted, under free hand	Purple-Blue, Intense Dark	Heart	Individual A
Incised, free hand	Not Applicable	Heart	Individual A

Herringbone and Bow



“Strings” of herringbone columns extending down from rim. Sections of the herringbone pattern are separated by a bow element. May or may not be painted.

Stylistic Genre: Molded Edge Decoration, other

Stylistic Genre: Molded Edge Decoration, other

Related Stylistic Element Data:

DecTech	Color	Sty. Element	Motif
Painted, under free hand	Green, Intense Medium	Herringbone and Bow	Individual A
Molded	Not Applicable	Herringbone and Bow	Individual A

DecTech	Color	Sty. Element	Motif
Molded	No Applied Color	Herringbone and Bow	Individual A

House



House elements are highly variable and are characterized by many attributes, ranging from windows, doors and multiple peaked roofs with finials. The image demonstrates one example of a house seen on both porcelains and earthenwares.

Note: if you cannot determine if it is a house or a church or some other building, use “Structure, unid.”

Stylistic Genre: The genre for this stylistic element depends on a combination of decorative technique, color, and element.

Stylistic Genre: Handpainted Blue

Related Stylistic Element Data:

DecTech	Color	Sty. Element	Motif
Painted, under free hand	Purple-Blue, Intense Dark	House	Scene Combination A
Painted, under free hand	Purple-Blue, Intense Dark	Tree	Scene Combination A

Hunt Scene



Any combination of elements that form a hunt scene. This usually involves natural elements, such as trees or bushes, dogs and men. In the case of the example, this is a sprig-molded image of riders on horses, hounds, and a fox racing through the woods.

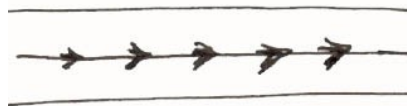
Stylistic Genre: None (leave field blank)

Stylistic Genre: None (leave field blank)

Related Stylistic Element Data:

DecTech	Color	Sty. Element	Motif
Sprig Molded	No Applied Color	Hunt Scene	Scene Combination A

Husk Chain Band 01



Husk Chain Band 1

This band is characterized by a chain of arrow-shaped motifs that may be bound between two bands. Seen most often on overglaze Chinese porcelain.

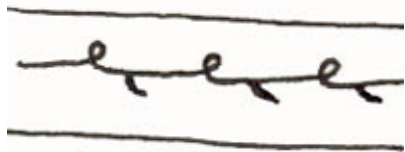
Stylistic Genre: The genre for this stylistic element depends on a combination of decorative technique, color, and element.

Stylistic Genre: Overglaze, handpainted

Related Stylistic Element Data:

DecTech	Color	Sty. Element	Motif
Painted, over free hand	Yellow, Muted Dark	Husk Chain Band 01	Individual A

Husk Chain Band 02



Seen most often on overglaze Chinese porcelain, this band consists of two straight-lines, or plain band 1s, surrounding a thin curlicue line. The thin line has small loops and a thin, leaf-like mark below and extending to the right of the curlicue.

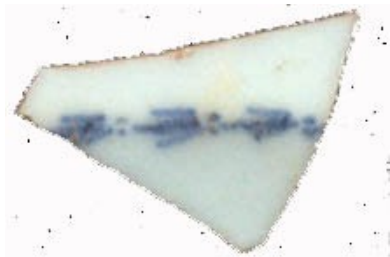
Stylistic Genre: The genre for this stylistic element depends on a combination of decorative technique, color, and element.

Stylistic Genre: Overglaze, handpainted

Related Stylistic Element Data:

DecTech	Color	Sty. Element	Motif
Painted, over free hand	Unidentifiable	Husk Chain Band 02	Individual A

Husk Chain Band 03



A chain of arrow-shaped elements separated by two or three dots creates this band. The combination of arrows and dots almost gives the impression of streamlined birds flying in a circle.

Stylistic Genre: The genre for this stylistic element depends on a combination of decorative technique, color, and element.

Stylistic Genre: Handpainted Blue

Related Stylistic Element Data:

DecTech	Color	Sty. Element	Motif
Painted, under free hand	Purple-Blue, Intense Dark	Husk Chain Band 03	Individual A

Husk Chain Band 04



A series of non-connected arrows painted above a thin plain band characterizes Husk Chain Band 4. It may have a thin plain band both above and below the arrows. This band can appear on both scalloped edge and non-scalloped edge vessels.

Stylistic Genre: The genre for this stylistic element depends on a combination of decorative technique, color, and element.



Stylistic Genre: Overglaze, handpainted

Related Stylistic Element Data:

DecTech	Color	Sty. Element	Motif
Painted, over free hand	Red, Intense Medium	Husk Chain Band 04	Individual A
Painted, over free hand	Yellow, Muted Medium	Husk Chain Band 04	Individual A

Husk Chain Band 05



A thin wavy band forms the core of Husk Chain Band 5. Small, filled half-arrows are painted inside of each curve of the wavy band. The arrows follow the concave portions of the wavy band, on both sides of the band. Seen most often on overglaze Chinese porcelain.

Stylistic Genre: The genre for this stylistic element depends on a combination of decorative technique, color, and element.

Stylistic Genre: Overglaze, handpainted

Related Stylistic Element Data:

DecTech	Color	Sty. Element	Motif
Painted, over free hand	Unidentifiable	Husk Chain Band 05	Individual A

Husk Chain Band 06



A chain of solid circles connected by solid roughly diamond shaped (or ovals) defines Husk Chain Band 6. Seen primarily on overglaze Chinese porcelain.

Stylistic Genre: The genre for this stylistic element depends on a combination of decorative technique, color, and element.

Stylistic Genre: Overglaze, handpainted

Related Stylistic Element Data:

DecTech	Color	Sty. Element	Motif
Painted, over free hand	Unidentifiable	Husk Chain Band 06	Individual A

Husk Chain Band 07



The band consists of a repeating image of a botanical fan consisting of three flaring lines connected at one point. The fan alternates the direction it points.

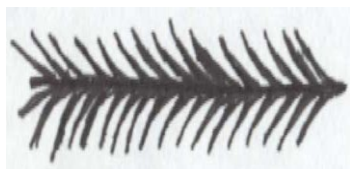
Stylistic Genre: The genre for this stylistic element depends on a combination of decorative technique, color, and element.

Stylistic Genre: None (leave field blank)

Related Stylistic Element Data:

DecTech	Color	Sty. Element	Motif
Painted, under free hand	Yellow, Muted Dark	Husk Chain Band 07	Individual A

Husk Chain Band 08



A more feathery and compact version of the chain of arrows similar to Husk Chain Band 1. The arrows are tightly compacted and overlap, rather than being distinct (as in HCB 1). The arrows appear to be flaring at the thinner portion of the tip, therefore mimicking a feather-like quality. It may be painted with a solid background or onto a plain surface.

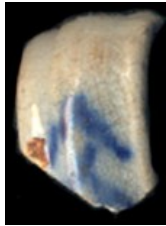
Stylistic Genre: The genre for this stylistic element depends on a combination of decorative technique, color, and element.

Stylistic Genre: Handpainted Blue

Related Stylistic Element Data:

DecTech	Color	Sty. Element	Motif
Painted, under free hand	Purple-Blue, Intense Dark	Husk Chain Band 08	Individual A

Husk Chain Band 09



This band is characterized by a series of unconnected arrow tops ^ stacked on top of each other.

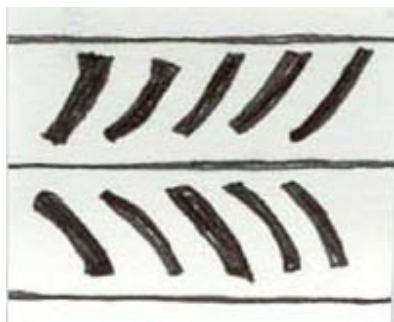
Stylistic Genre: The genre for this stylistic element depends on a combination of decorative technique, color, and element.

Stylistic Genre: Handpainted Blue

Related Stylistic Element Data:

DecTech	Color	Sty. Element	Motif
Painted, under free hand	Purple-Blue, Intense Dark	Husk Chain Band 09	Individual A

Husk Chain Band 10



This band is a horizontal row of curved lines that arch away from a center band. They look a bit like arrows (or the husk chain) that have bisected and separated.

Stylistic Genre: The genre for this stylistic element depends on a combination of decorative technique, color, and element.

Stylistic Genre: Slipware, factory made

Related Stylistic Element Data:

DecTech	Color	Sty. Element	Motif
Painted, under lathe/engine turned	Purple-Blue, Intense Dark	Husk Chain Band 10	Individual A
Incised	Blue, Muted Light	Husk Chain Band 10	Individual A

Husk Chain Band 11



This band consists of repeated “corn-husk” elements separated by two dots. The “corn” elements are flared at the left end, and the husk appears to be peeling back on the right hand side.

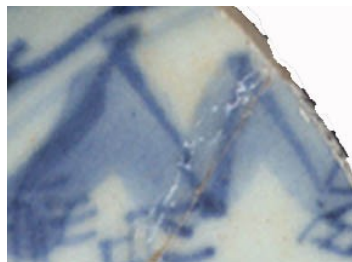
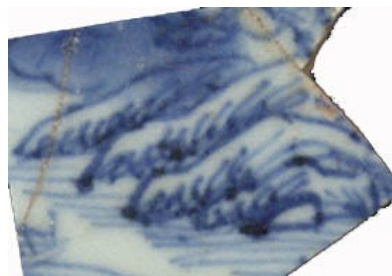
Stylistic Genre: The genre for this stylistic element depends on a combination of decorative technique, color, and element.

Stylistic Genre: Overglaze, handpainted

Related Stylistic Element Data:

DecTech	Color	Sty. Element	Motif
Painted, over free hand	Unidentifiable	Husk Chain Band 11	Individual A

Landscape/Hills



Landscape/Hills is used to describe any painted element that represents a landscape, such as hills, mountains, and rocks. The elements may appear in the foreground and/or background.

Stylistic Genre: The genre for this stylistic element depends on a combination of decorative technique, color, and element.

Stylistic Genre: Handpainted Blue

Related Stylistic Element Data:

DecTech	Color	Sty. Element	Motif
Painted, under free hand	Purple-Blue, Intense Dark	Landscape/Hills	Scene Combination A
Painted, under free hand	Purple-Blue, Intense Dark	Water, body of	Scene Combination A

Lettering



Lettering is any decorative element that includes printed letters or writing. This element uses multiple decorative techniques, ranging from stenciling, and stamping to painting and transfer printing.

Stylistic Genre: The genre for this stylistic element depends on a combination of decorative technique, color, and element.

Stylistic Genre: None (leave field blank)

Related Stylistic Element Data:

DecTech	Color	Sty. Element	Motif
Stencil	Purple-Blue, Muted Medium	Lettering	Individual A

Stylistic Genre: None (leave field blank)

Related Stylistic Element Data:

DecTech	Color	Sty. Element	Motif
Incised, free hand	No Applied Color	Lettering	Individual A

Man



Any depiction of a man. This can vary from the molded head seen on porcelain and shown to the left, to hand painted male figures in Chinoiserie scenes like the hand and arm seen in the other example.

Stylistic Genre: The genre for this stylistic element depends on a combination of decorative technique, color, and element.

Stylistic Genre: None (leave field blank)

Related Stylistic Element Data:

DecTech	Color	Sty. Element	Motif
Molded	No Applied Color	Man	Individual A

Stylistic Genre: Overglaze, handpainted

Related Stylistic Element Data:

DecTech	Color	Sty. Element	Motif
Painted, over free hand	Unidentifiable	Man	Individual A

Marbleized



Marbling is a result of several differently colored slips that are joggled or combed together. This mixing of slips creates a marbled effect that can be seen on both refined and coarse earthenwares. Marbling is generally more mixed and free form than formal combing.

Stylistic Genre: The genre for this stylistic element depends on a combination of decorative technique, color, and element.

Stylistic Genre: None (leave field blank)

Related Stylistic Element Data:

DecTech	Color	Sty. Element	Motif
Slip	Yellow, Intense Light	Marbleized	Individual A
Slip	Yellow-Red, Muted Dark	Marbleized	Individual A

Medallion, GR



Cipher of King George I, II, or III.

Stylistic Genre: Blue, molded/stamped/incised

Stylistic Genre: Blue, molded/stamped/incised

Related Stylistic Element Data:

DecTech	Color	Sty. Element	Motif
Painted, under free hand	Purple-Blue, Intense Dark	Medallion, GR	Individual A
Sprig Molded	Not Applicable	Medallion, GR	Individual A

Medallion, unid.



Most often seen on Westerwald, this stylistic element is used whenever a sprigged element can be identified as a medallion, but cannot be specifically identified beyond that.

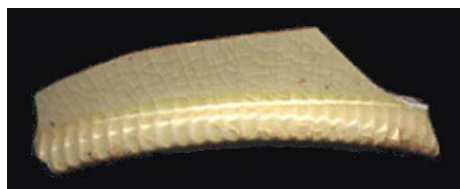
Stylistic Genre: The genre for this stylistic element depends on a combination of decorative technique, color, and element.

Stylistic Genre: Blue, molded/stamped/incised

Related Stylistic Element Data:

DecTech	Color	Sty. Element	Motif
Sprigged	Not Applicable	Medallion, unid	Individual A

Molded Band 01



Repeated short vertical lines that create small channels characterize Molded Band 1. This band is molded as part of the vessel as opposed to Roulette Band 4 that is formed separately by a roulette tool. The example to the left shows this band at the foot ring/base of a vessel.

Stylistic Genre: Molded Edge Decoration, other.

Stylistic Genre: Molded Edge Decoration, other

Related Stylistic Element Data:

DecTech	Color	Sty. Element	Motif
Molded	No Applied Color	Molded Band 01	Individual A

Molded Band 02



Molded Band 2 is a wide, raised, flat band.

Stylistic Genre: None (leave field blank)

Stylistic Genre: None (leave field blank)

Related Stylistic Element Data:

DecTech	Color	Sty. Element	Motif
Molded	No Applied Color	Molded Band 02	Individual A

Mythical Creature



Any depiction of a mythical creature, such as a griffon seen sprigged on the Rosso Antico example.

Stylistic Genre: None (leave field blank)

Related Stylistic Element Data:

DecTech	Color	Sty. Element	Motif
Sprig Molded	No Applied Color	Mythical Creature	Individual A

Not Applicable

Use "Not Applicable" in the Stylistic Element field when recording the following decoration:

- Burnished
- Cord Marked
- Decalcomania
- Rusticated/Encrusted
- Pierced
- Printed, flow
- Printed, over
- Printed, under
- Punctate

Notched



(Usually parallel) Beveled notches cut into a sherd, usually on the rim or lip. Seen on coarse earthenware such as Colonoware and Native American coarseware.

Stylistic Genre: None (Leave field blank)

Stylistic Genre: None (leave field blank)

Related Stylistic Element Data:

DecTech	Color	Sty. Element	Motif
Cut	No Applied Color	Notched	Individual, Repeated A

DecTech	Color	Sty. Element	Motif
Rouletted	No Applied Color	Notched	Individual A

Peacock



Peacocks are often seen on Delftware. Use this element when you can identify the entire bird or parts of a peacock such as the distinct tail, often stylized.

Stylistic Genre: The genre for this stylistic element depends on a combination of decorative technique, color, and element.

Stylistic Genre: Polychrome, other

Related Stylistic Element Data:

DecTech	Color	Sty. Element	Motif
Painted, under free hand	Purple-Blue, Intense Dark	Peacock	Scene Combination A
Painted, under free hand	Purple, Muted Medium	Peacock	Scene Combination A

Plain Band 01



Plain Band 01 is a single stripe of color. Plain Band 01 can be thick or thin--the size of the band does not influence its classification. These examples show Plain Band 1 on the proximal rim of the vessel but it can be seen on any portion of a decorated vessel except the exterior of the rim (see Plain Band 06). It is often seen as a component of other Bands.

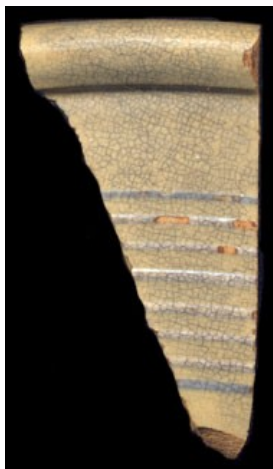
Stylistic Genre: The genre for this stylistic element depends on a combination of decorative technique, color, and element.

Stylistic Genre: Handpainted Blue

Related Stylistic Element Data:

DecTech	Color	Sty. Element	Motif
Painted, under free hand	Purple-Blue, Muted Medium	Plain Band 01	Individual A

Plain Band 02



Plain Band 02 is one of the few bands whose classification is linked to decorative technique. Plain Band 02 is formed on a lathe and is characterized by repeated slipped or painted, engine turned bands. The repeated bands can either be a single color separated by “white space,” the body of the vessel, or alternating colors separated by “white space.”

Stylistic Genre: The genre for this stylistic element depends on a combination of decorative technique, color, and element.

Stylistic Genre: Slipware, factory made

Related Stylistic Element Data:

DecTech	Color	Sty. Element	Motif
Slip, lathe/engine turned	Yellow-Red, Muted Dark	Plain Band 02	Individual A
Slip, lathe/engine turned	Purple-Blue, Muted Medium	Plain Band 02	Individual A

Stylistic Genre: Slipware, factory made




Related Stylistic Element Data:

DecTech	Color	Sty. Element	Motif
Slip, inlaid	Yellow-Red, Muted Dark	Plain Band 02	Individual A

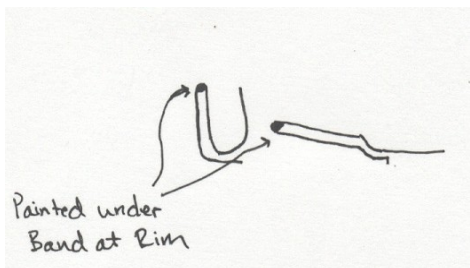
Stylistic Genre: Slipware, factory made

Related Stylistic Element Data:

DecTech	Color	Sty. Element	Motif
Slip, lathe/engine turned	Purple-Blue, Muted Medium	Plain Band 02	Individual A
Slip, lathe/engine turned	Neutrals, Light	Plain Band 02	Individual A

<p>Plain Band 03</p> 	<p>Plain Band 03 is defined by three separate painted bands that are ordered by size: thin-thick-thin. Extending off the bottom line are small curved lines or ticks.</p> <p>Stylistic Genre: The genre for this stylistic element depends on a combination of decorative technique, color, and element.</p>	<p>Stylistic Genre: Overglaze, handpainted</p> <p>Related Stylistic Element Data:</p> <table border="1" data-bbox="1157 228 2062 339"> <thead> <tr> <th>DecTech</th> <th>Color</th> <th>Sty. Element</th> <th>Motif</th> </tr> </thead> <tbody> <tr> <td>Painted, over free hand</td> <td>Unidentifiable</td> <td>Plain Band 03</td> <td>Individual A</td> </tr> </tbody> </table>	DecTech	Color	Sty. Element	Motif	Painted, over free hand	Unidentifiable	Plain Band 03	Individual A				
DecTech	Color	Sty. Element	Motif											
Painted, over free hand	Unidentifiable	Plain Band 03	Individual A											
<p>Plain Band 04</p> 	<p>Plain Band 04 is a solid color enclosed by two thinner lines. It follows a thin-thick-thin pattern. While the thin-thick-thin pattern is familiar to other plain bands such as 03 and 10, Plain Band 04 is most often executed in two colors. The thin bands are one color and the central, thick band is a separate color. The three bands are directly adjacent to each other.</p> <p>Stylistic Genre: The genre for this stylistic element depends on a combination of decorative technique, color, and element.</p>	<p>Stylistic Genre: Polychrome, warm</p> <p>Related Stylistic Element Data:</p> <table border="1" data-bbox="1157 634 2062 818"> <thead> <tr> <th>DecTech</th> <th>Color</th> <th>Sty. Element</th> <th>Motif</th> </tr> </thead> <tbody> <tr> <td>Painted, under free hand</td> <td>Yellow, Intense Light</td> <td>Plain Band 04</td> <td>Individual A</td> </tr> <tr> <td>Painted, under free hand</td> <td>Yellow, Muted Dark</td> <td>Plain Band 04</td> <td>Individual A</td> </tr> </tbody> </table>	DecTech	Color	Sty. Element	Motif	Painted, under free hand	Yellow, Intense Light	Plain Band 04	Individual A	Painted, under free hand	Yellow, Muted Dark	Plain Band 04	Individual A
DecTech	Color	Sty. Element	Motif											
Painted, under free hand	Yellow, Intense Light	Plain Band 04	Individual A											
Painted, under free hand	Yellow, Muted Dark	Plain Band 04	Individual A											
<p>Plain Band 05</p> 	<p>Plain Band 05 is simply two thin parallel bands that encircle a vessel.</p> <p>Stylistic Genre: The genre for this stylistic element depends on a combination of decorative technique, color, and element.</p>	<p>Stylistic Genre: Handpainted Blue</p> <p>Related Stylistic Element Data:</p> <table border="1" data-bbox="1157 1114 2062 1224"> <thead> <tr> <th>DecTech</th> <th>Color</th> <th>Sty. Element</th> <th>Motif</th> </tr> </thead> <tbody> <tr> <td>Painted, under free hand</td> <td>Purple-Blue, Muted Medium</td> <td>Plain Band 05</td> <td>Individual A</td> </tr> </tbody> </table>	DecTech	Color	Sty. Element	Motif	Painted, under free hand	Purple-Blue, Muted Medium	Plain Band 05	Individual A				
DecTech	Color	Sty. Element	Motif											
Painted, under free hand	Purple-Blue, Muted Medium	Plain Band 05	Individual A											

Plain Band 06



Plain Band 06 is one of the few bands where location defines the band. Plain Band 06 is always located directly on the rim of the vessel, be it a plate or a tea bowl. As indicated in the picture, Plain Band 06 is executed on the small, flat portion of the rim.

Stylistic Genre: The genre for this stylistic element depends on a combination of decorative technique, color, and element.

Stylistic Genre: None (leave field blank)

DecTech	Color	Sty. Element	Motif
Painted, under free hand	Yellow-Red, Muted Medium	Plain Band 06	Individual A

Plain Band 07



Plain Band 07 is composed of two parallel lines. One thick upper band and one thin lower band. There is a space separating the two bands.

Stylistic Genre: The genre for this stylistic element depends on a combination of decorative technique, color, and element.

Stylistic Genre: Polychrome, warm

Related Stylistic Element Data:

DecTech	Color	Sty. Element	Motif
Painted, under free hand	Yellow, Muted Dark	Plain Band 07	Individual A

Plain Band 08



Two adjoining bands of color, either a combination of thin-thick or two bands of similar thickness, define Plain Band 08. There is no “white space” between these two bands.

Stylistic Genre: The genre for this stylistic element depends on a combination of decorative technique, color, and element.

Stylistic Genre: Polychrome, warm

Related Stylistic Element Data:

DecTech	Color	Sty. Element	Motif
Painted, under free hand	Yellow-Red, Muted Medium	Plain Band 08	Individual A
Painted, under free hand	Yellow, Intense Light	Plain Band 08	Individual A

Plain Band 09



Plain Band 09 is characterized by an unconnected grouping of bands following a thin-thick-thin pattern. The bands are separated by a space of undecorated glazed vessel (“white space”).

Stylistic Genre: The genre for this stylistic element depends on a combination of decorative technique, color, and element.

Stylistic Genre: Polychrome, other

Related Stylistic Element Data:

DecTech	Color	Sty. Element	Motif
Slip, lathe/engine turned	Yellow-Red, Muted Dark	Plain Band 09	Individual A
Slip, lathe/engine turned	Yellow, Muted Light	Plain Band 09	Individual A

Plain Band 10



Plain Band 10 is a rather irregular solid band of color that undulates and might best be imagined as a “cloud band.” This band is always one color.

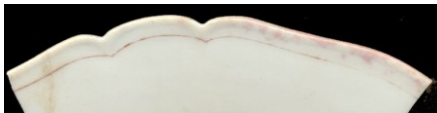
Stylistic Genre: The genre for this stylistic element depends on a combination of decorative technique, color, and element.

Stylistic Genre: Canton

Related Stylistic Element Data:

DecTech	Color	Sty. Element	Motif
Painted, under free hand	Purple-Blue, Intense Dark	Plain Band 10	Individual A

Plain Band 11



Two adjoining bands characterize Plain Band 11. One solid thick band follows the edge of the vessel. The second band is a thin, darker band painted at the base of the wider first band. If this band is on a scalloped edge vessel, it follows the scalloped edge.

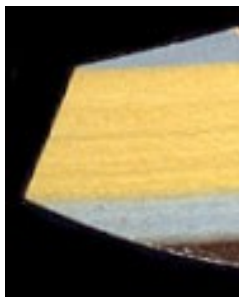
Stylistic Genre: The genre for this stylistic element depends on a combination of decorative technique, color, and element.

Stylistic Genre: Overglaze, handpainted

Related Stylistic Element Data:

DecTech	Color	Sty. Element	Motif
Painted, over free hand	Red, Muted Light	Plain Band 11	Individual A

Plain Band 12



Multiple solid colored bands adjacent to each other define Plain Band 12. There is NO white space separating each band. Each colored band does not have to follow a specific order.

Stylistic Genre: The genre for this stylistic element depends on a combination of decorative technique, color, and element.

Stylistic Genre: Slipware, factory made

Related Stylistic Element Data:

DecTech	Color	Sty. Element	Motif
Slip, lathe/engine turned	Yellow-Red, Muted Dark	Plain Band 12	Individual A
Slip, lathe/engine turned	Blue, Muted Light	Plain Band 12	Individual A
Slip, lathe/engine turned	Yellow, Intense Light	Plain Band 12	Individual A

Plain Band 13



A simple brown/rust colored band below the rim, seen on early white salt glaze or slip-dipped vessels.

Stylistic Genre: There is no genre for this stylistic element.

Stylistic Genre: None (leave field blank)

Related Stylistic Element Data:

DecTech	Color	Sty. Element	Motif
Dipped	Yellow-Red, Intense Dark	Plain Band 13	Individual A

Plain Band 14



Plain Band 14 is a triple band that encircles a vessel.

Stylistic Genre: The genre for this stylistic element depends on a combination of decorative technique, color, and element.

Stylistic Genre: Handpainted Blue

Related Stylistic Element Data:

DecTech	Color	Sty. Element	Motif
Painted, under free hand	Purple-Blue, Intense Medium	Plain Band 14	Individual A

Plain Band, unid.

Use this term when you have a plain band, but cannot identify the exact one.

Stylistic Genre: The genre for this stylistic element depends on a combination of decorative technique, color, and element.

Plain Edge



Plain Edge is a very simple upturned molded edge. This edge is seen primarily on flat Creamware vessels.

Stylistic Genre: Molded Edge Decoration, other

Stylistic Genre: Molded Edge Decoration, other

Related Stylistic Element Data:

DecTech	Color	Sty. Element	Motif
Molded	No Applied Color	Plain Edge	Individual A

Plume, botanical



A large, swirly botanical motif that functions as a divider between molded designs on edge decorated wares such as White Salt Glaze and Whieldon.

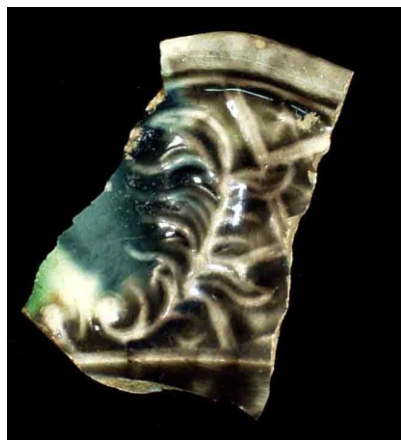
Stylistic Genre:
Dot/Diaper/Basketweave

Stylistic Genre: Dot/Diaper/Basketweave

Related Stylistic Element Data:

DecTech	Color	Sty. Element	Motif
Molded	No Applied Color	Plume, botanical	Adjacent Combination A

Plume, feather



A molded feather that functions as a divider between molded designs on edge or marley decorated wares such as White Salt Glaze and Whieldon.

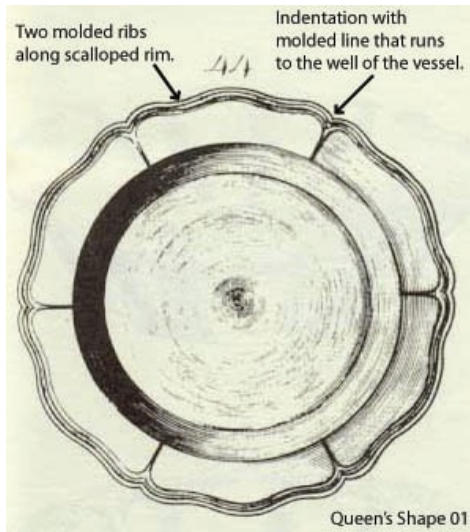
Stylistic Genre:
Dot/Diaper/Basketweave

Stylistic Genre: Dot/Diaper/Basketweave

Related Stylistic Element Data:

DecTech	Color	Sty. Element	Motif
Molded	Not Applicable	Plume, feather	Adjacent Combination A
Applied Powder/ Crystals	Yellow-Red, Muted Medium	Clouded	Adjacent Combination A
Applied Powder/ Crystals	Green, Muted Medium	Clouded	Adjacent Combination A

Queen's Shape 01



Queen's Shape 01 has a scalloped rim with two molded ribs where the rim meets the lip. At intervals, the molded lines extend down from the indentations of the scalloped rim, across the marley and end at the well of the vessel. This differs from the Royal Pattern in that the molded lines extend all the way to the well.

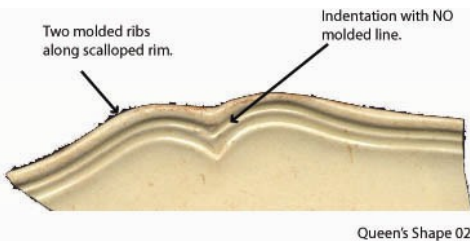
Stylistic Genre: Queen's Shape

Stylistic Genre: Queen's Shape

Related Stylistic Element Data:

DecTech	Color	Sty. Element	Motif
Molded	No Applied Color	Queen's Shape 01	Individual A

Queen's Shape 02



Queen's Shape 02 has a scalloped rim with two molded ribs where the rim meets the lip. Unlike Queen's Shape 01, Queen's Shape 02 does not have the molded lines that extend down from the scalloped rim indentations across the marley.

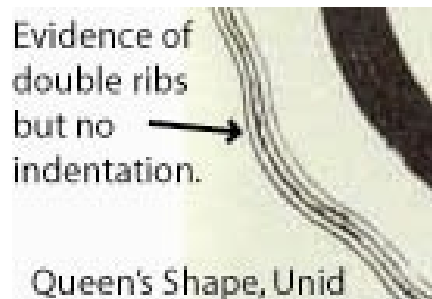
Stylistic Genre: Queen's Shape

Stylistic Genre: Queen's Shape

Related Stylistic Element Data:

Location	DecTech	Color	Sty. Element
Interior, Proximal Rim	Molded	No Applied Color	Queen's Shape 02

Queen's Shape, unid.



Queen's Shape, unid has a scalloped rim with two molded ribs where the rim meets the lip. Use Queen's Shape, unid. when you have a sherd that has a scalloped rim with two molded ribs along the rim AND that does not have the indentation. In other words, when you can't tell if the sherd had Queen's Shape 01 or Queen's Shape 02 but you feel certain it is some type of Queen's Shape decoration.

Stylistic Genre: Queen's Shape

Stylistic Genre: Queen's Shape

Related Stylistic Element Data:

Location	DecTech	Color	Sty. Element
Interior, Proximal Rim	Molded	No Applied Color	Queen's Shape, unid.

Quiver



Stylized or actual representation of a quiver of arrows. These images include the strap of the quiver and the arrows.

Stylistic Genre: The genre for this stylistic element depends on a combination of decorative technique, color, and element.

Stylistic Genre: Overglaze, handpainted

Related Stylistic Element Data:

DecTech	Color	Sty. Element	Motif
Painted, over free hand	Unidentifiable	Quiver	Individual A