

DAACS Stylistic Element Glossary

T-Z

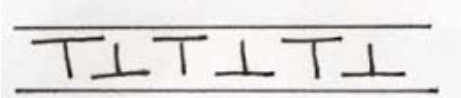
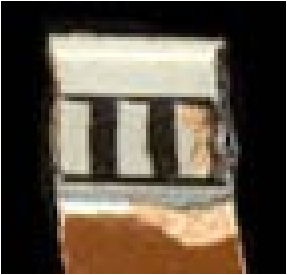

by Beatrix Arendt, Lynsey Bates, Leslie Cooper, Jillian Galle,
Elizabeth Sawyer, Jesse Sawyer, and Karen Smith

Last Updated April 2013

T Band 01.....	5
T Band 02.....	5
T Band 03.....	5
Textured.....	6
Tick Mark.....	6
Tortoiseshell.....	6
Trailed.....	7
Tree.....	8
Trellis 01.....	9
Trellis 02.....	9
Trellis 03.....	10
Trellis, unid.....	11
Trellis Band 01.....	11
Trellis Band 02.....	12
Trellis Band 03.....	12
Trellis Band 04.....	13
Trellis Band 05.....	13
Trellis Band 06.....	13
Trellis Band 07.....	14
Trellis Band 08.....	14
Trellis Band 09.....	15
Trellis Band 10.....	15
Trellis Band 11.....	16
Trellis Band 12.....	17
Trellis Band 13.....	17
Trellis Band 14.....	18
Trellis Band 15.....	19
Trellis Band 16.....	19
Trellis Band 17.....	20
Trellis Band 18.....	20
Trellis Band 19.....	21
Trellis Band 20.....	21
Trellis Band 21.....	22
Trellis Band 23.....	22
Trellis Band 24.....	22
Trellis Band 25.....	23

Trellis Band 26.....	24
Trellis Band 27.....	24
Trellis Band 29.....	25
Trellis Band 30.....	25
Trellis Band 31.....	25
Trellis Band 32.....	26
Trellis Band 33.....	26
Trellis Band 34.....	27
Trellis Band 35.....	27
Trellis Band 36.....	27
Trellis Band 37.....	28
Trellis Band 38.....	28
Trellis Band 39.....	28
Trellis Band 40.....	29
Trellis Band 41.....	29
Trellis Band 42.....	30
Trellis Band 43.....	30
Trellis Band 45.....	31
Trellis Band 46.....	31
Trellis Band, unid.....	32
Twig.....	32
Umbrella.....	33
Unidentified.....	34
Vertical Lines.....	35
Vessel, ceramic.....	36
Wall.....	37
Water, body of.....	37
Wavy Band 01.....	38
Wavy Band 02.....	38
Wavy Band 03.....	38
Wavy Band 04.....	39
Wavy Band 05.....	39
Wavy Band 06.....	39
Wavy Band 07.....	40
Wavy Band 08.....	40
Wavy Band 09.....	40
Wavy Band 10.....	41

Wavy Band 11.....	41
Wavy Band 12.....	41
Wavy Band 13.....	42
Wavy Band 14.....	42
Wavy Band 15.....	43
Wavy Band, unid	43
Wings	43
Woman.....	44

Stylistic Element Name and Image	Characteristics	Cataloging Example for the Depicted Sherd															
<p data-bbox="247 152 394 180">T Band 01</p>  <p data-bbox="233 386 348 414">T Band 1</p>	<p data-bbox="632 120 1192 256">Alternating right side up and upside down Ts characterize this band. The Ts are bound by two to four plain bands. Seen most often on overglaze porcelain.</p> <p data-bbox="632 298 1167 399">Stylistic Genre: The genre for this stylistic element depends on a combination of decorative technique, color, and element.</p>	<p data-bbox="1388 155 1892 183">Stylistic Genre: Overglaze, handpainted</p> <p data-bbox="1430 228 1850 256">Related Stylistic Element Data:</p> <table border="1" data-bbox="1245 297 2039 443"> <thead> <tr> <th data-bbox="1245 297 1446 370">DecTech</th> <th data-bbox="1446 297 1661 370">Color</th> <th data-bbox="1661 297 1850 370">Sty. Element</th> <th data-bbox="1850 297 2039 370">Motif</th> </tr> </thead> <tbody> <tr> <td data-bbox="1245 370 1446 443">Painted, over free hand</td> <td data-bbox="1446 370 1661 443">Unidentifiable</td> <td data-bbox="1661 370 1850 443">T Band 01</td> <td data-bbox="1850 370 2039 443">Individual A</td> </tr> </tbody> </table>				DecTech	Color	Sty. Element	Motif	Painted, over free hand	Unidentifiable	T Band 01	Individual A				
DecTech	Color	Sty. Element	Motif														
Painted, over free hand	Unidentifiable	T Band 01	Individual A														
<p data-bbox="247 526 394 553">T Band 02</p> 	<p data-bbox="632 493 1188 594">Vertical bars of inlaid slip that are connected by upper and lower horizontal inlaid slip bands.</p> <p data-bbox="632 636 1136 664">Stylistic Genre: Slipware, factory made</p>	<p data-bbox="1394 529 1887 557">Stylistic Genre: Slipware, factory made</p> <p data-bbox="1430 602 1850 630">Related Stylistic Element Data:</p> <table border="1" data-bbox="1245 667 2039 889"> <thead> <tr> <th data-bbox="1245 667 1446 708">DecTech</th> <th data-bbox="1446 667 1648 708">Color</th> <th data-bbox="1648 667 1850 708">Sty. Element</th> <th data-bbox="1850 667 2039 708">Motif</th> </tr> </thead> <tbody> <tr> <td data-bbox="1245 708 1446 781">Slip, inlaid</td> <td data-bbox="1446 708 1648 781">Yellow-Red, Muted Dark</td> <td data-bbox="1648 708 1850 781">T Band 02</td> <td data-bbox="1850 708 2039 781">Individual A</td> </tr> <tr> <td data-bbox="1245 781 1446 889">Slip, lathe/engine turned</td> <td data-bbox="1446 781 1648 889">Yellow-Red Intense Medium</td> <td data-bbox="1648 781 1850 889">Solid</td> <td data-bbox="1850 781 2039 889">Individual B</td> </tr> </tbody> </table>				DecTech	Color	Sty. Element	Motif	Slip, inlaid	Yellow-Red, Muted Dark	T Band 02	Individual A	Slip, lathe/engine turned	Yellow-Red Intense Medium	Solid	Individual B
DecTech	Color	Sty. Element	Motif														
Slip, inlaid	Yellow-Red, Muted Dark	T Band 02	Individual A														
Slip, lathe/engine turned	Yellow-Red Intense Medium	Solid	Individual B														
<p data-bbox="247 993 394 1021">T Band 03</p> 	<p data-bbox="632 961 1188 1097">This T band consists of vertical bars hanging from a line, alternating with vertical bars coming up from a line. Mostly found on factory-made slipwares.</p>	<p data-bbox="1394 1000 1887 1027">Stylistic Genre: Slipware, factory made</p> <p data-bbox="1430 1073 1850 1101">Related Stylistic Element Data:</p> <table border="1" data-bbox="1245 1138 2039 1284"> <thead> <tr> <th data-bbox="1245 1138 1446 1179">DecTech</th> <th data-bbox="1446 1138 1648 1179">Color</th> <th data-bbox="1648 1138 1850 1179">Sty. Element</th> <th data-bbox="1850 1138 2039 1179">Motif</th> </tr> </thead> <tbody> <tr> <td data-bbox="1245 1179 1446 1284">Slip, lathe/engine turned</td> <td data-bbox="1446 1179 1648 1284">Neutrals, Dark</td> <td data-bbox="1648 1179 1850 1284">T Band 03</td> <td data-bbox="1850 1179 2039 1284">Individual A</td> </tr> </tbody> </table>				DecTech	Color	Sty. Element	Motif	Slip, lathe/engine turned	Neutrals, Dark	T Band 03	Individual A				
DecTech	Color	Sty. Element	Motif														
Slip, lathe/engine turned	Neutrals, Dark	T Band 03	Individual A														

Textured



A textured element is when the body of the vessel has been left rough and unfinished. The effect is less regular than spalling. It has a texture similar to a stuccoed house or ceiling.

Stylistic Genre: None (leave field blank)

Stylistic Genre: None (leave field blank)

Related Stylistic Element Data:

DecTech	Color	Sty. Element	Motif
Textured	No Applied Color	Textured	Individual A

Tick Mark



A series of parallel lines incised on the lip of a vessel that is oriented more or less perpendicular to the rim itself. Seen primarily on coarsewares like Colonoware and Native American coarseware.

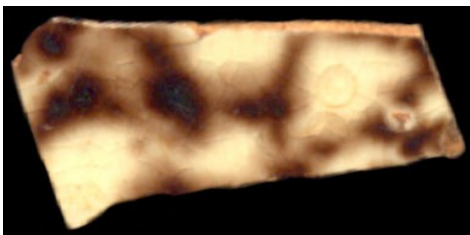
Stylistic Genre: None (leave field blank)

Stylistic Genre: None (leave field blank)

Related Stylistic Element Data:

DecTech	Color	Sty. Element	Motif
Incised, free hand	No Applied Color	Tick Mark	Individual, Repeated A

Tortoiseshell



Tortoiseshell decoration consists of a brown speckling under a clear lead-fluxed glaze.

Stylistic Genre: None (leave field blank)

Stylistic Genre: None (leave field blank)

Related Stylistic Element Data:

DecTech	Color	Sty. Element	Motif
Applied Powder/Crystals	Yellow-Red, Muted Dark	Tortoiseshell	Individual A

Trailed



The simplest of slip decoration, Trailed is used to describe freehand slip decoration where the slip is applied to a vessel in straight and/or curved lines; nothing is done to the slip after it is laid down.

Stylistic Genre: The genre for this stylistic element depends on a combination of decorative technique, color, and element.

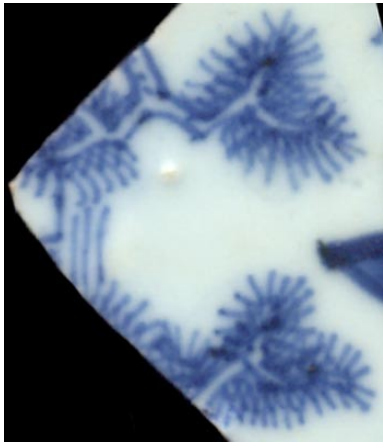
Note that only the color that is trailed onto the vessel is recorded in the Decorative Technique table. The white/yellow slip would be recorded in the Ceramic Interior Color field and the brown trailed slip is recorded in the decorative technique table as shown on the right.

Stylistic Genre: None (leave field blank)

Related Stylistic Element Data:

DecTech	Color	Sty. Element	Motif
Slip	Yellow-Red, Muted Dark	Trailed	Individual A

Tree



Any element that resembles a tree. The type of tree is unimportant; a palm tree, an evergreen tree, and a deciduous tree would all be a “Tree” stylistic element.

Stylistic Genre: The genre for this stylistic element depends on a combination of decorative technique, color, and element.

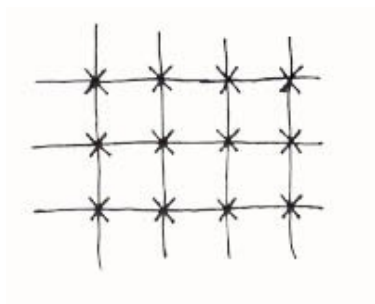


Stylistic Genre: Handpainted Blue

Related Stylistic Element Data:

DecTech	Color	Sty. Element	Motif
Painted, under free hand	Purple-Blue, Intense Dark	Tree	Individual A

Trellis 01



Trellis 1 occurs most often in patches on the vessel, rather than in a band format. It is characterized by the crossed lines that form one or more levels of diamond- or square-shaped lattice. A small X is painted at the intersection of each line. Most often seen on overglaze Chinese porcelain.

Stylistic Genre: The genre for this stylistic element depends on a combination of decorative technique, color, and element.

Stylistic Genre: Overglaze, handpainted

Related Stylistic Element Data:

DecTech	Color	Sty. Element	Motif
Painted, over free hand	Red, Intense Medium	Trellis 01	Individual A

Trellis 02



Trellis 2 is characterized by double-lined Xs that have a cross at the intersection of each X. Half-circles connect each triangular segment created by the double-lined Xs.

Stylistic Genre: The genre for this stylistic element depends on a combination of decorative technique, color, and element.

Stylistic Genre: Handpainted Blue

Related Stylistic Element Data:

DecTech	Color	Sty. Element	Motif
Painted, under free hand	Purple-Blue, Intense Dark	Trellis 02	Individual A

Trellis 03



Series of alternating lines that cross each other at an angle. The decorative technique for this stylistic element can be either molded (as seen in the first example) or hand painted (seen below).

Stylistic Genre: The genre for this stylistic element depends on a combination of decorative technique, color, and element

Stylistic Genre: Dot/Diaper/Basketweave

Related Stylistic Element Data:

DecTech	Color	Sty. Element	Motif
Molded	No Applied Color	Trellis 03	Individual A

Stylistic Genre: Handpainted Blue

DecTech	Color	Sty. Element	Motif
Painted, under free hand	Purple-Blue, Intense Dark	Trellis 03	Individual A

Trellis, unid.

This classification should be used when small, unidentifiable portions of a Trellis are present on a sherd. It is often the case that the decoration can be identified as a Trellis but there is not enough present to name the exact Trellis. "Trellis, unid." should be used in these cases.

Stylistic Genre: The genre for this stylistic element depends on a combination of decorative technique, color, and element.

Trellis Band 01



A combination of alternating lines and dots define Trellis Band 01. Three vertical, parallel lines bound both sides of seven dots or ticks. Six of the dots/ticks form a circle with the seventh in the center of that circle. This pattern of lines and dot circles continues in a band around the vessel.

Stylistic Genre: The genre for this stylistic element depends on a combination of decorative technique, color, and element.

Stylistic Genre: Handpainted Blue

Related Stylistic Element Data:

DecTech	Color	Sty. Element	Motif
Painted, under free hand	Purple-Blue, Intense Dark	Trellis Band 01	Individual A

Trellis Band 02



This Trellis Band is characterized by intersecting parallel lines that are most often arranged on a diagonal to form a diamond pattern. A small X or cross is painted at the intersection of each line. The background of the band can be shaded with a darker blue or it can be left blank.

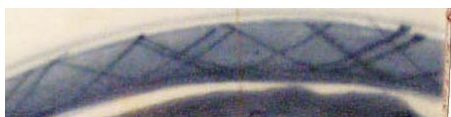
Stylistic Genre: Canton

Stylistic Genre: Canton

Related Stylistic Element Data:

DecTech	Color	Sty. Element	Motif
Painted, under free hand	Purple-Blue, Intense Dark	Trellis Band 02	Individual A

Trellis Band 03



Alternating single and double-lined Xs bounded by two to four horizontal bands. This band can have a solid, colored background. If the band has a colored background, record the color of the background; otherwise, simply record the color of the Xs.

Stylistic Genre: The genre for this stylistic element depends on a combination of decorative technique, color, and element.

Stylistic Genre: Handpainted Blue

Related Stylistic Element Data:

DecTech	Color	Sty. Element	Motif
Painted, under free hand	Purple-Blue, Intense Dark	Trellis Band 03	Individual A

Trellis Band 04



This detailed trellis band is characterized by repeating double-lined Xs that have a cross where the double-lined Xs meet. There are two short ticks at the upper and lower junctions of the double-crossed Xs. This band is also seen with triple-lined Xs.

Stylistic Genre: The genre for this stylistic element depends on a combination of decorative technique, color, and element.

Stylistic Genre: Handpainted Blue

Related Stylistic Element Data:

DecTech	Color	Sty. Element	Motif
Painted, under free hand	Purple-Blue, Intense Dark	Trellis Band 04	Individual A

Trellis Band 05



Repeating double-lined Xs with dot decoration in the interstices characterize this band. A single dot is painted in the upper and lower open triangular spaces made by the Xs. Groups of four dots fill the open diamond-shaped space. This band is identical to Trellis Band 08 except that it has dashes instead of dots.

Stylistic Genre: The genre for this stylistic element depends on a combination of decorative technique, color, and element.

Stylistic Genre: Handpainted Blue

Related Stylistic Element Data:

DecTech	Color	Sty. Element	Motif
Painted, under free hand	Purple-Blue, Intense Dark	Trellis Band 05	Individual A

Trellis Band 06



Intersecting parallel lines arranged on a diagonal to form a crosshatching pattern. Small ticks project downward into each diamond-shaped cell.

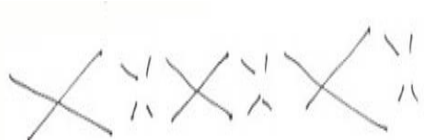
Stylistic Genre: The genre for this stylistic element depends on a combination of decorative technique, color, and element.

Stylistic Genre: Handpainted Blue

Related Stylistic Element Data:

DecTech	Color	Sty. Element	Motif
Painted, under free hand	Purple-Blue, Intense Dark	Trellis Band 06	Individual A

Trellis Band 07



Solid-lined Xs that alternate with smaller, nonintersecting dashed Xs define Trellis Band 07. This band is identical to Trellis Band 12 except that it has double-lined Xs.

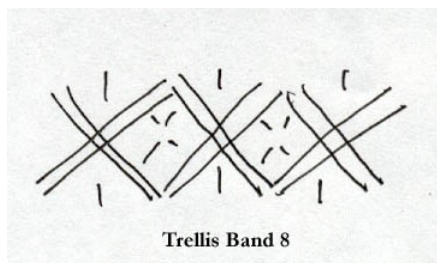
Stylistic Genre: The genre for this stylistic element depends on a combination of decorative technique, color, and element.

Stylistic Genre: Handpainted Blue

Related Stylistic Element Data:

DecTech	Color	Sty. Element	Motif
Painted, under free hand	Purple-Blue, Intense Medium	Trellis Band 07	Individual A

Trellis Band 08



Repeating double-lined Xs with dash decoration in the interstices characterize this band. A single dash is painted in the upper and lower open triangular spaces made by the Xs while groups of four dashes fill the open diamond-shaped spaces. This band is identical to Trellis Band 05 except that it has dots instead of dashes.

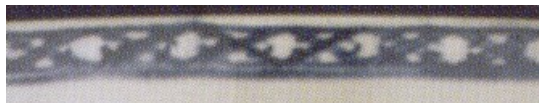
Stylistic Genre: The genre for this stylistic element depends on a combination of decorative technique, color, and element.

Stylistic Genre: Overglaze, handpainted

Related Stylistic Element Data:

DecTech	Color	Sty. Element	Motif
Painted, over free hand	Unidentifiable	Trellis Band 08	Individual A

Trellis Band 09



The basis of this band is the classic crossed lines that form one or more levels of diamond-shaped lattice. The defining characteristic of this band is the small circle or square painted around each intersection of crossed lines.

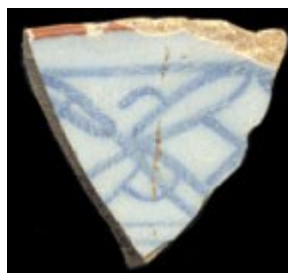
Stylistic Genre: The genre for this stylistic element depends on a combination of decorative technique, color, and element.

Stylistic Genre: Handpainted Blue

Related Stylistic Element Data:

DecTech	Color	Sty. Element	Motif
Painted, under free hand	Purple-Blue, Intense Dark	Trellis Band 09	Individual A
Painted, under free hand	Purple-Blue, Muted Medium	Trellis Band 09	Individual A

Trellis Band 10



Four oblong lobes forming an X, with half-circles in the triangular spaces at the top and bottom of the X. In the diamond-shaped cell between the oblong, lobed Xs is a normal, single-lined X.

Stylistic Genre: The genre for this stylistic element depends on a combination of decorative technique, color, and element.

Stylistic Genre: Handpainted Blue

Related Stylistic Element Data:

DecTech	Color	Sty. Element	Motif
Painted, under free hand	Purple-Blue, Muted Medium	Trellis Band 10	Individual A

Trellis Band 11



Trellis Band 11 is characterized by flowers with four petals that are oriented in such a way that the petals create a diamond pattern. This band is seen both with and without dots and with and without a solid background. A taller version of this band can be seen, with the top half of the band repeated under the main band, i.e., a one and a half sized tall trellis.

Stylistic Genre: The genre for this stylistic element depends on a combination of decorative technique, color, and element.

Stylistic Genre: Handpainted Blue

Related Stylistic Element Data:

DecTech	Color	Sty. Element	Motif
Painted, under free hand	Purple-Blue, Muted Dark	Trellis Band 11	Individual A

Trellis Band 12



Double-line solid Xs that alternate with smaller dashed Xs define Trellis Band 12. This band is very similar to Trellis Band 07 except that this band has double-lined solid Xs instead of single-lined Xs.

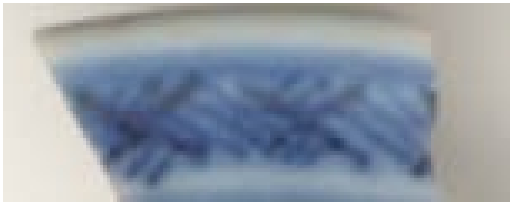
Stylistic Genre: The genre for this stylistic element depends on a combination of decorative technique, color, and element.

Stylistic Genre: Handpainted Blue

Related Stylistic Element Data:

DecTech	Color	Sty. Element	Motif
Painted, under free hand	Purple-Blue, Intense Dark	Trellis Band 12	Individual A

Trellis Band 13



Single Xs with crosshatching in between.

Stylistic Genre: The genre for this stylistic element depends on a combination of decorative technique, color, and element.

Stylistic Genre: Handpainted Blue

Related Stylistic Element Data:

DecTech	Color	Sty. Element	Motif
Painted, under free hand	Purple-Blue, Muted Dark	Trellis Band 13	Individual A
Painted, under free hand	Purple-Blue, Intense Dark	Trellis Band 13	Individual A

Trellis Band 14



Repeating double- or triple-lined Xs with dash decoration in the interstices between, above, and below the Xs.

Stylistic Genre: The genre for this stylistic element depends on a combination of decorative technique, color, and element.

Stylistic Genre: Handpainted Blue

Related Stylistic Element Data:

DecTech	Color	Sty. Element	Motif
Painted, under free hand	Purple-Blue, Intense Dark	Trellis Band 14	Adjacent Combination A

Trellis Band 15



A band of squares broken into quadrants. Double-lined Xs are circumscribed by these quartered squares.

Stylistic Genre: The genre for this stylistic element depends on a combination of decorative technique, color, and element.

Stylistic Genre: Handpainted Blue

Related Stylistic Element Data:

DecTech	Color	Sty. Element	Motif
Painted, under free hand	Purple-Blue, Intense Dark	Trellis Band 15	Individual A

Trellis Band 16



Trellis Band 16 is characterized by crossed double lines that form a repeating diamond pattern. Inside of each diamond “cell” is a single lined X. Another single lined X is inside the top triangle formed by the diamonds.

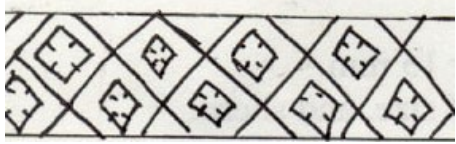
Stylistic Genre: The genre for this stylistic element depends on a combination of decorative technique, color, and element.

Stylistic Genre: Handpainted Blue

Related Stylistic Element Data:

DecTech	Color	Sty. Element	Motif
Painted, under free hand	Purple-Blue, Intense Dark	Trellis Band 16	Individual A

Trellis Band 17



This trellis band is characterized by the classic trellis: single crossed lines that form a diamond shaped pattern. Inside the larger diamonds sits small diamonds that contain four short diagonal lines.

Stylistic Genre: The genre for this stylistic element depends on a combination of decorative technique, color, and element.

Stylistic Genre: Handpainted Blue

Related Stylistic Element Data:

DecTech	Color	Sty. Element	Motif
Painted, under free hand	Purple-Blue, Intense Dark	Trellis Band 17	Individual A

Trellis Band 18



Composed of concentric Xs or crosshatching with a disconnected X inside the diamond-shaped cells between the Xs.

Stylistic Genre: The genre for this stylistic element depends on a combination of decorative technique, color, and element.

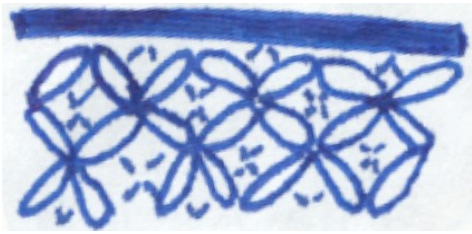
Stylistic Genre: Handpainted Blue

Related Stylistic Element Data:

DecTech	Color	Sty. Element	Motif
Painted, under free hand	Purple-Blue, Intense Dark	Trellis Band 18	Individual A



Trellis Band 19



Two connected rows of a lobed X's with a cluster of four hatch marks in the open spaces.

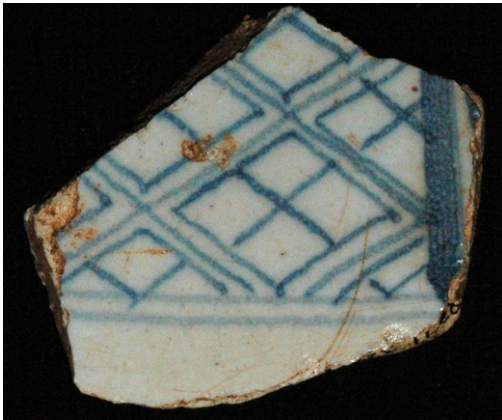
Stylistic Genre: The genre for this stylistic element depends on a combination of decorative technique, color, and element.

Stylistic Genre: Handpainted Blue

Related Stylistic Element Data:

DecTech	Color	Sty. Element	Motif
Painted, under free hand	Purple-Blue, Intense Dark	Trellis Band 19	Individual A

Trellis Band 20



This band is similar to Trellis Band 18. It consists of concentric Xs or crosshatching with a connected X (Trellis Band 18 has a disconnected X) inside the diamond-shaped cells between the Xs.

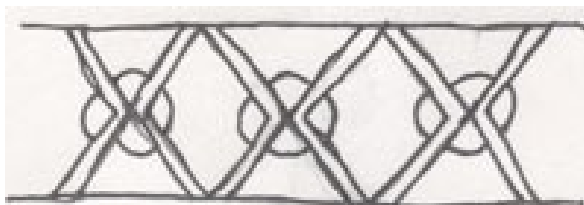
Stylistic Genre: The genre for this stylistic element depends on a combination of decorative technique, color, and element.

Stylistic Genre: Handpainted Blue

Related Stylistic Element Data:

DecTech	Color	Sty. Element	Motif
Painted, under free hand	Purple-Blue, Intense Dark	Trellis Band 20	Individual A

Trellis Band 21



This band consists of a series of concentric Xs or crosshatching with an interrupted circle behind each X (so that it is divided into quarters by the X).

Stylistic Genre: The genre for this stylistic element depends on a combination of decorative technique, color, and element.

Stylistic Genre: Handpainted Blue

Related Stylistic Element Data:

DecTech	Color	Sty. Element	Motif
Painted, under free hand	Purple-Blue, Intense Dark	Trellis Band 21	Individual A

Trellis Band 23



A series of crossed double lines forming a lattice pattern.

Stylistic Genre: The genre for this stylistic element depends on a combination of decorative technique, color, and element.

Stylistic Genre: Handpainted Blue

Related Stylistic Element Data:

DecTech	Color	Sty. Element	Motif
Painted, under free hand	Purple-Blue, Intense Dark	Trellis Band 23	Individual A

Trellis Band 24



This band consists of a series of connected alternating single-line Xs and double line Xs. The Xs are attached to a single band, above, with open half-circles.

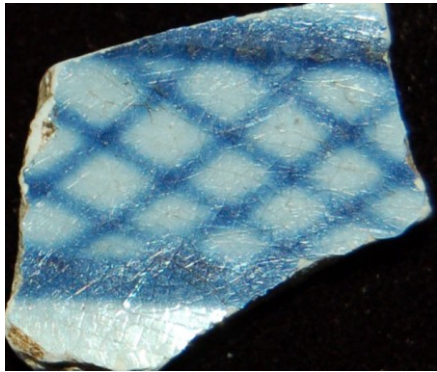
Stylistic Genre: The genre for this stylistic element depends on a combination of decorative technique, color, and element.

Stylistic Genre: Handpainted Blue

Related Stylistic Element Data:

DecTech	Color	Sty. Element	Motif
Painted, under free hand	Purple-Blue, Intense Dark	Trellis Band 24	Individual A

Trellis Band 25



A series of single lines, forming a lattice pattern. Lines than bound this band may vary in color.

Stylistic Genre: The genre for this stylistic element depends on a combination of decorative technique, color, and element.

Stylistic Genre: Handpainted Blue


Related Stylistic Element Data:

DecTech	Color	Sty. Element	Motif
Painted, under free hand	Purple-Blue, Intense Dark	Trellis Band 25	Individual A

DecTech	Color	Sty. Element	Motif
Painted, under free hand	Purple-Blue, Intense Dark	Trellis Band 25	Individual A
Painted, under free hand	Yellow, Intense Medium	Trellis Band 25	Individual A

Trellis Band 26



This band is similar to Trellis Band 2  except it is only half of the band. Trellis Band 26 appears as a zigzag line with half crosses at the vertices of the zigzags. It can either have a painted background as seen in this example, or it can have no background.

Stylistic Genre: The genre for this stylistic element depends on a combination of decorative technique, color, and element.

Stylistic Genre: Handpainted Blue

Related Stylistic Element Data:

DecTech	Color	Sty. Element	Motif
Painted, under free hand	Purple-Blue, Intense Dark	Trellis Band 26	Stacked Combination A
Painted, under free hand	Purple-Blue, Muted Medium	Trellis Band 26	Stacked Combination A
Painted, under free hand	Purple-Blue, Intense Dark	Geometric Band 11	Stacked Combination A
Painted, under free hand	Purple-blue, Muted Medium	Geometric Band 11	Stacked Combination A

Trellis Band 27



This band is similar to Trellis Band 14&15. Repeating double-Xs with single Xs in the interstices between double-Xs.

Stylistic Genre: Handpainted Blue

Stylistic Genre: Handpainted Blue

Related Stylistic Element Data:

DecTech	Color	Sty. Element	Motif
Painted, under free hand	Purple-Blue, Intense Dark	Trellis Band 27	Individual A

Trellis Band 29



Repeating double-lined Xs with dot decoration in the interstices characterize this band. Groups of four dots in a diamond pattern fill the open diamond-shaped space. It is banded by a single line at the top and a double line at the bottom.

Stylistic Genre: The genre for this stylistic element depends on a combination of decorative technique, color, and element

Stylistic Genre: Overglaze, handpainted

Related Stylistic Element Data:

DecTech	Color	Sty. Element	Motif
Painted, over free hand	Red, Muted Dark	Trellis Band 29	Individual A

Trellis Band 30



This band consists of evenly spaced single Xs.

Stylistic Genre: The genre for this stylistic element depends on a combination of decorative technique, color, and element

Stylistic Genre: Handpainted Blue

Related Stylistic Element Data:

DecTech	Color	Sty. Element	Motif
Painted, under free hand	Purple-Blue, Muted Dark	Trellis Band 30	Individual A

Trellis Band 31



This band consists of two different elements combined to create a trellis. Oblong lobes form a zigzag pattern. Within each triangle formed by the lobes are two short ticks oriented perpendicular to the lobes. These ticks may or may not meet to form a point. The trellis may or may not be bounded by solid lines

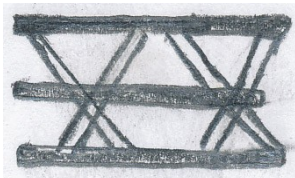
Stylistic Genre: The genre for this stylistic element depends on a combination of decorative technique, color, and element.

Stylistic Genre: Overglaze, handpainted

Related Stylistic Element Data:

DecTech	Color	Sty. Element	Motif
Painted, over free hand	Red, Intense Medium	Trellis Band 31	Individual A
Painted, under free hand	Purple-Blue, Intense Dark	Trellis Band 31	Individual A

Trellis Band 32



A band of double-X's bisected by a center horizontal line.

Stylistic Genre: Handpainted, Blue

Stylistic Genre: Handpainted Blue

Related Stylistic Element Data:

DecTech	Color	Sty. Element	Motif
Painted under, free hand	Purple-Blue, Intense Dark	Trellis Band 32	Individual A

Trellis Band 33



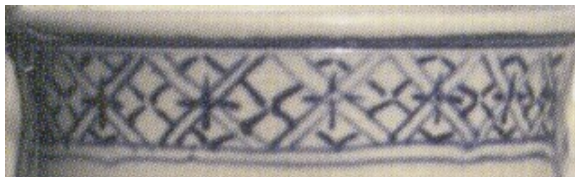
A band composed of a single row of X's with a cross in each X, creating an asterisk. A single dot is located in the middle of the diamond negative space between the X's.

Stylistic Genre: Handpainted, Blue

Stylistic Genre: Handpainted Blue

Related Stylistic Element Data:

DecTech	Color	Sty. Element	Motif
Painted under, free hand	Purple-Blue, Intense Dark	Trellis Band 33	Individual A

Trellis Band 34

Very similar to Trellis Band 14: Repeating double- or triple-lined Xs with dash decoration in the interstices between, above, and below the Xs. The difference with this band is the addition of a single line cross on each double X.

Stylistic Genre: Handpainted, Blue

Stylistic Genre: Handpainted Blue

Related Stylistic Element Data:

DecTech	Color	Sty. Element	Motif
Painted under, free hand	Purple-Blue, Intense Dark	Trellis Band 34	Individual A

Trellis Band 35

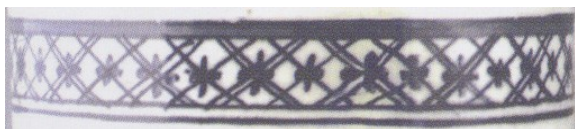
Similar to Trellis Band 18: Double lined X's form a single row. A disconnected X is inside the diamond-shaped cells between the Xs. This band has the addition of a vertical line at the junction of each X.

Stylistic Genre: Handpainted, Blue

Stylistic Genre: Handpainted Blue

Related Stylistic Element Data:

DecTech	Color	Sty. Element	Motif
Painted under, free hand	Purple-Blue, Intense Dark	Trellis Band 35	Individual A

Trellis Band 36

Double lined X's alternate with single lined X's. A thick, single lined cross is painted on all X junctions.

Stylistic Genre: Handpainted, Blue

Stylistic Genre: Handpainted Blue

Related Stylistic Element Data:

DecTech	Color	Sty. Element	Motif
Painted under, free hand	Purple-Blue, Intense Dark	Trellis Band 36	Individual A

Trellis Band 37



Double lined X's create a single-row band. A single lined cross is painted at the junction of each cross.

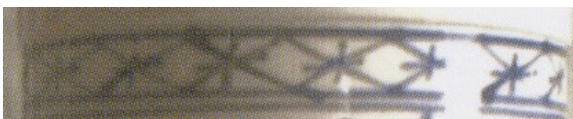
Stylistic Genre: Handpainted, Blue

Stylistic Genre: Handpainted Blue

Related Stylistic Element Data:

DecTech	Color	Sty. Element	Motif
Painted under, free hand	Purple-Blue, Intense Dark	Trellis Band 37	Individual A

Trellis Band 38



Similar to Trellis Band 37, but with single lined X's instead of double: Single lined X's create a single-row band. A single lined cross is painted at the junction of each cross, creating an asterisk.

Stylistic Genre: Handpainted, Blue

Stylistic Genre: Handpainted Blue

Related Stylistic Element Data:

DecTech	Color	Sty. Element	Motif
Painted under, free hand	Purple-Blue, Intense Dark	Trellis Band 38	Individual A

Trellis Band 39



A single row of double lined X's with open circles in the diamond shaped spaces between X's.

Stylistic Genre: Handpainted, Blue

Stylistic Genre: Handpainted Blue

Related Stylistic Element Data:

DecTech	Color	Sty. Element	Motif
Painted under, free hand	Purple-Blue, Intense Dark	Trellis Band 39	Individual A

Trellis Band 40



The blurry effect in this example is the result of the paint running. Triple lined X's create a single trellis row. Large "open rectangles" are painted in the diamond spaces between the X's.

Stylistic Genre: Handpainted, Blue

Stylistic Genre: Handpainted Blue

Related Stylistic Element Data:

DecTech	Color	Sty. Element	Motif
Painted under, free hand	Purple-Blue, Intense Dark	Trellis Band 40	Individual A

Trellis Band 41



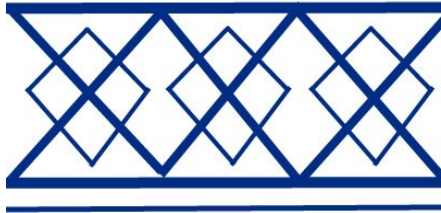
A single row of X's with slightly smaller diamonds transposed over each X junction.

Stylistic Genre: Handpainted, Blue

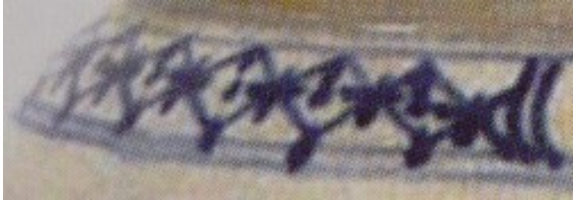
Stylistic Genre: Handpainted Blue

Related Stylistic Element Data:

DecTech	Color	Sty. Element	Motif
Painted under, free hand	Purple-Blue, Muted Dark	Trellis Band 41	Individual A



Trellis Band 42



Very similar to Trellis Band 33: A band composed of a single row of X's with a cross in each X, creating an asterisk. A single dot is located in the middle of the diamond negative space between the X's. This band the addition of three vertical dots down the midline of each diamond: one at the top vertex, one in the center and one at the bottom vertex.

Stylistic Genre: Handpainted, Blue

Stylistic Genre: Handpainted Blue

Related Stylistic Element Data:

DecTech	Color	Sty. Element	Motif
Painted under, free hand	Purple-Blue, Muted Dark	Trellis Band 42	Individual A

Trellis Band 43



Very similar to Trellis Band 18: Composed of concentric Xs or crosshatching with a disconnected X inside the diamond-shaped cells between the Xs. The difference between the two is that the X's on this band are composed of double lines that overlap one another, as opposed to the X's that are not overlapping in Trellis Band 18, thus creating a small diamond in the center of each of those.

Stylistic Genre: Handpainted, Blue

Stylistic Genre: Handpainted Blue

Related Stylistic Element Data:

DecTech	Color	Sty. Element	Motif
Painted under, free hand	Purple-Blue, Muted Dark	Trellis Band 43	Individual A

Trellis Band 45



Double lined X's form the central part of the central element of the band. Smaller single lined diamonds are located in the spaces between X's. Each diamond has a dot in the center. Half-circles are painted above and below the cross bars of the X's.

Stylistic Genre: Handpainted, Blue



Stylistic Genre: Handpainted Blue

Related Stylistic Element Data:

DecTech	Color	Sty. Element	Motif
Painted under, free hand	Purple-Blue, Muted Dark	Trellis Band 45	Individual A

Trellis Band 46



This could be thought of as “half of a trellis band”. Triple lined V's instead of X's form the central element of the band. Single lined hatch marks form V's in the negative spaces between.

Stylistic Genre: Handpainted, Blue

Stylistic Genre: Handpainted Blue

Related Stylistic Element Data:

DecTech	Color	Sty. Element	Motif
Painted under, free hand	Purple-Blue, Intense Dark	Trellis Band 46	Individual A

Trellis Band, unid.

This classification should be used when small, unidentifiable portions of a Trellis band are present on a sherd. It is often the case that the decoration can be identified as a Trellis band but there is not enough present to name the exact Trellis band. Trellis Band, unid. should be used in these cases.

Stylistic Genre: The genre for this stylistic element depends on a combination of decorative technique, color, and element.

Twig



This is an element seen on factory made slipware, created with a multi-chambered slip cup. The “twigs” are made by dragging the quills in a series of connected opposing motions. Seen oriented both horizontally and vertically.

Stylistic Genre: Slipware, factory made

Related Stylistic Element Data:

DecTech	Color	Sty. Element	Motif
Slip	Yellow-Red, Muted Dark	Twig	Individual A
Slip	Blue, Muted Light	Twig	Individual A
Slip	N9/	Twig	Individual A

Umbrella



The umbrella stylistic element is used to describe any painted or molded element that resembles an umbrella. Seen most often on Chinoiserie style painted pearlwares.

Stylistic Genre: The genre for this stylistic element depends on a combination of decorative technique, color, and element.

Stylistic Genre: Polychrome, warm

Related Stylistic Element Data:

DecTech	Color	Sty. Element	Motif
Painted, under free hand	Yellow-Red, Intense Medium	Umbrella	Individual A
Painted, under free hand	Yellow, Muted Medium	Umbrella	Individual A
Painted, under free hand	Purple-Blue, Muted Medium	Umbrella	Individual A

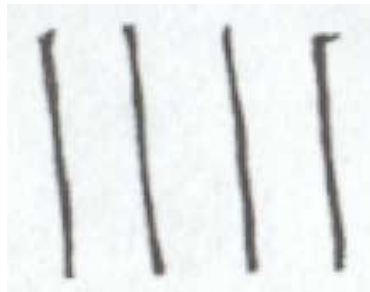
Unidentified

Use the term “Unidentified” when the portion of the stylistic element is completely unidentifiable. This means that you may have a sherd with decoration but the decoration is so small or obscure that you are unable to classify it with any certainty. For example, if you know that the element you have is a Trellis Band but you don’t know which Trellis Band it is, use Trellis Band, unid; do not use “Unidentified.”

If you use “Unidentified,” and you think the decoration might be identifiable in the long-run, i.e. we might see a sherd with more of the decoration at a later date, then image the sherd and link it to the artifact record.

Stylistic Genre: The genre for this stylistic element depends on a combination of decorative technique, color, and element.

Vertical Lines



Any series of vertical lines or bands. Vertical lines may be used in combination with other elements such as being painted on the inside of molded flutes.

Stylistic Genre: The genre for this stylistic element depends on a combination of decorative technique, color, and element.

Stylistic Genre: Overglaze, handpainted

Related Stylistic Element Data:

DecTech	Color	Sty. Element	Motif
Painted, over free hand	Gilt	Vertical Lines	Individual A

Stylistic Genre: None (leave field blank)

Related Stylistic Element Data:

DecTech	Color	Sty. Element	Motif
Molded	No Applied Color	Vertical Lines	Individual A

Vessel, ceramic



This stylistic element should be used for describing images of ceramic vessels on ceramics, which should be identified by vessel style and decoration. As this example shows, this is a ceramic vessel holding a pineapple. This stylistic element is not only seen on polychrome painted pearlwares but also on wares such as Black Basalt.

Stylistic Genre: The genre for this stylistic element depends on a combination of decorative technique, color, and element.

Stylistic Genre: Polychrome, warm

Related Stylistic Element Data:

DecTech	Color	Sty. Element	Motif
Painted, under free hand	Yellow-Red, Muted Dark	Vessel, ceramic	Individual A
Painted, under free hand	Yellow-Red, Intense Medium	Vessel, ceramic	Individual A
Painted, under free hand	Yellow-Red, Muted Dark	Fruit	Individual A
Painted, under free hand	Yellow-Red, Intense Medium	Fruit	Individual A
Painted, under free hand	Green-Yellow, Muted Medium	Botanical, unidentified	Individual A
Painted, under free hand	Yellow-Red, Muted Dark	Botanical, unidentified	Individual A

Wall



Wall elements are most often seen on Chinoiserie style Chinese porcelains. They were often painted around houses. This example depicts a masonry wall with either larger masonry pieces or windows along the top of the wall.

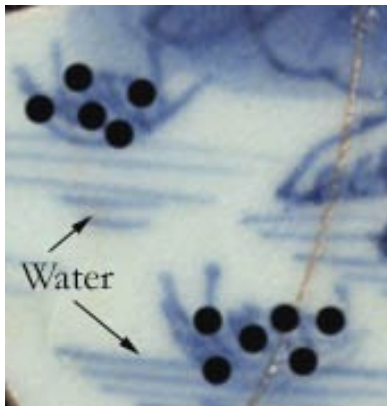
Stylistic Genre: The genre for this stylistic element depends on a combination of decorative technique, color, and element.

Stylistic Genre: Handpainted Blue

Related Stylistic Element Data:

DecTech	Color	Sty. Element	Motif
Painted, under free hand	Purple-Blue, Intense Dark	Wall	Individual A

Water, body of



A range of shading techniques characterizes bodies of water. Identifying water usually includes other images within the scene. Water is usually represented by lines of varying thicknesses that give emphasis to objects on the water or land protruding into the water.

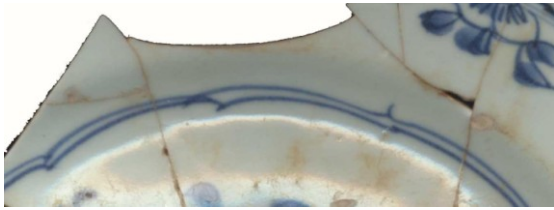
Stylistic Genre: The genre for this stylistic element depends on a combination of decorative technique, color, and element.

Stylistic Genre: Handpainted Blue

Related Stylistic Element Data:

DecTech	Color	Sty. Element	Motif
Painted, under free hand	Purple-Blue, Intense Dark	Water, body of	Scene Combination A
Painted, under free hand	Purple-Blue, Intense Dark	Boat	Scene Combination A
Painted, under free hand	Purple-Blue, Intense Dark	Landscape/Hills	Scene Combination A

Wavy Band 01



Two parallel lines that follow a slight, scallop pattern characterize Wavy Band 01. This band is most often seen in the well of a plate in conjunction with a radiating bloom floral element.

Stylistic Genre: The genre for this stylistic element depends on a combination of decorative technique, color, and element.

Stylistic Genre: Handpainted Blue

Related Stylistic Element Data:

DecTech	Color	Sty. Element	Motif
Painted, under free hand	Purple-Blue, Intense Dark	Wavy Band 01	Individual A

Wavy Band 02



A single wavy band of dots. This band can have both large and small undulating curves. Seen most often on overglaze porcelain.

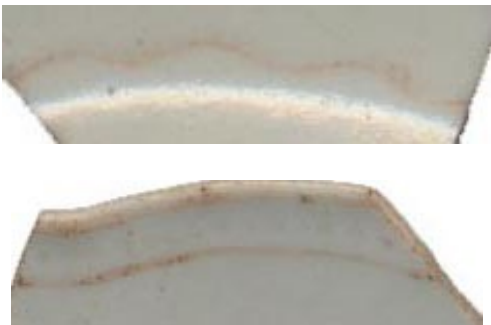
Stylistic Genre: The genre for this stylistic element depends on a combination of decorative technique, color, and element.

Stylistic Genre: Overglaze, handpainted

Related Stylistic Element Data:

DecTech	Color	Sty. Element	Motif
Painted, over free hand	Yellow, Muted Medium	Wavy Band 02	Individual A

Wavy Band 03



A single, solid wavy band. This band can have both large and small undulating curves. Seen most often on overglaze porcelain.

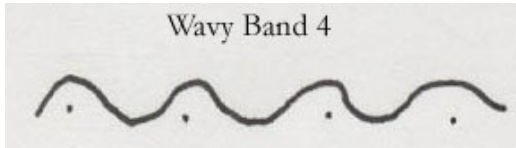
Stylistic Genre: The genre for this stylistic element depends on a combination of decorative technique, color, and element.

Stylistic Genre: Overglaze, handpainted

Related Stylistic Element Data:

DecTech	Color	Sty. Element	Motif
Painted, over free hand	Red, Intense Medium	Wavy Band 03	Individual A

Wavy Band 04



A solid wavy line that has dots on the underside of the line characterizes Wavy Band 04.

Stylistic Genre: The genre for this stylistic element depends on a combination of decorative technique, color, and element.

Stylistic Genre: Overglaze, handpainted

Related Stylistic Element Data:

DecTech	Color	Sty. Element	Motif
Painted, over free hand	Unidentifiable	Wavy Band 04	Individual A

Wavy Band 05



Single zigzag band.

Stylistic Genre: Slipware, factory made

Stylistic Genre: Slipware, factory made

Related Stylistic Element Data:

DecTech	Color	Sty. Element	Motif
Slip, inlaid	Yellow-Red, Intense Medium	Plain Band 02	Stacked Combination A
Slip, inlaid	Yellow-Red, Intense Medium	Wavy Band 05	Stacked Combination A

Wavy Band 06



This band is characterized by small, repeated waves or small scallops. Seen primarily on stonewares.

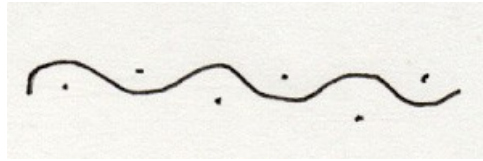
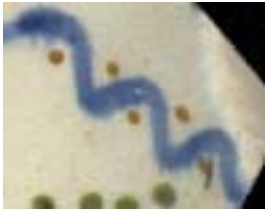
Stylistic Genre: None (leave field blank)

Stylistic Genre: None (leave field blank)

Related Stylistic Element Data:

DecTech	Color	Sty. Element	Motif
Rouletted	No Applied Color	Wavy Band 06	Individual A

Wavy Band 07



A solid wavy line with dots on the inside of each curve characterizes Wavy Band 07. These dots are found on both sides of the wavy line.

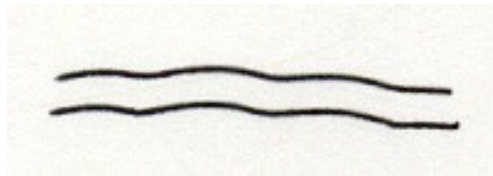
Stylistic Genre: The genre for this stylistic element depends on a combination of decorative technique, color, and element.

Stylistic Genre: Polychrome, warm

Related Stylistic Element Data:

DecTech	Color	Sty. Element	Motif
Painted, under free hand	Yellow-Red, Muted Medium	Wavy Band 07	Individual A
Painted, under free hand	Purple-Blue, Intense Dark	Wavy Band 07	Individual A

Wavy Band 08



Wavy Band 08 is characterized by two, solid, wavy lines that run parallel. Seen most often on over-glaze porcelain.

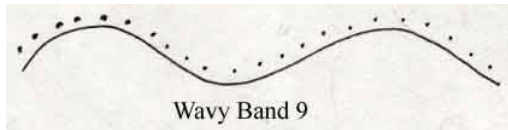
Stylistic Genre: The genre for this stylistic element depends on a combination of decorative technique, color, and element.

Stylistic Genre: Overglaze, handpainted

Related Stylistic Element Data:

DecTech	Color	Sty. Element	Motif
Painted, over free hand	Unidentifiable	Wavy Band 08	Individual A

Wavy Band 09



Two parallel wavy lines running around the vessel. One is solid; the other is made up of dots. A solid wavy line with dots on one-side of the line. Seen most often on overglaze porcelain.

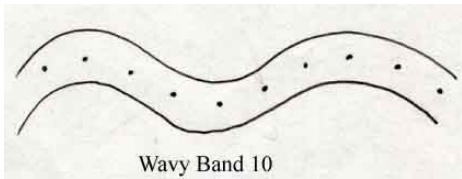
Stylistic Genre: The genre for this stylistic element depends on a combination of decorative technique, color, and element.

Stylistic Genre: Overglaze, handpainted

Related Stylistic Element Data:

DecTech	Color	Sty. Element	Motif
Painted, over free hand	Unidentifiable	Wavy Band 09	Individual A

Wavy Band 10



A single band of wavy dots enclosed by two, parallel wavy lines. Seen most often on overglaze Chinese porcelain.

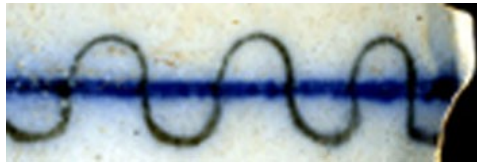
Stylistic Genre: The genre for this stylistic element depends on a combination of decorative technique, color, and element.

Stylistic Genre: Overglaze, handpainted

Related Stylistic Element Data:

DecTech	Color	Sty. Element	Motif
Painted, over free hand	Unidentifiable	Wavy Band 10	Individual A

Wavy Band 11



This element consists of a single straight line with a wavy line overlapping it.

Stylistic Genre: The genre for this stylistic element depends on a combination of decorative technique, color, and element.

Stylistic Genre: Handpainted Blue

Related Stylistic Element Data:

DecTech	Color	Sty. Element	Motif
Painted, under free hand	Purple-Blue, Intense Dark	Wavy Band 11	Individual A
Painted, under free hand	Neutrals, Dark	Wavy Band 11	Individual A

Wavy Band 12



Two zigzag bands placed over top of each other and offset.

Stylistic Genre: Slipware, factory made.

Stylistic Genre: Slipware, factory made

Related Stylistic Element Data:

DecTech	Color	Sty. Element	Motif
Slip, inlaid	Neutrals, Dark	Dash Band 11	Stacked Combination A
Slip, inlaid	Neutrals, Dark	Wavy Band 12	Stacked Combination A

Wavy Band 13



Two wavy bands that are offset and stacked on top of each other.

Stylistic Genre: Slipware, factory made.

Stylistic Genre: Slipware, factory made

Related Stylistic Element Data:

DecTech	Color	Sty. Element	Motif
Slip, inlaid	Neutrals, Dark	Wavy Band 13	Stacked Combination A

Wavy Band 14



A single, solid wavy band similar to Wavy Band 03, but with feathery protrusions extending from the underside of the band (Note: This band is pictured here with Fish Roe Band 05).

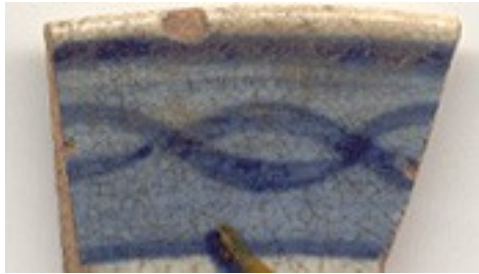
Stylistic Genre: The genre for this stylistic element depends on a combination of decorative technique, color, and element.

Stylistic Genre: Overglaze, handpainted

Related Stylistic Element Data:

DecTech	Color	Sty. Element	Motif
Painted, over free hand	Red, Intense Medium	Wavy Band 14	Individual A

Wavy Band 15



Two wavy bands placed over top of each other and offset. It can either have a painted background as seen in this example, or it can have no background.

Stylistic Genre: The genre for this stylistic element depends on a combination of decorative technique, color, and element.

Stylistic Genre: Handpainted Blue

Related Stylistic Element Data:

DecTech	Color	Sty. Element	Motif
Painted, under free hand	Purple-Blue, Intense Dark	Wavy Band 15	Individual A

Wavy Band, unid

Use this when you have a small portion of a wavy band, but cannot identify the specific band.

Stylistic Genre: The genre for this stylistic element depends on a combination of decorative technique, color, and element.

Wings



Any element showing wings, stylized or not.

Stylistic Genre: The genre for this stylistic element depends on a combination of decorative technique, color, and element.

Stylistic Genre: Handpainted Blue

Related Stylistic Element Data:

DecTech	Color	Sty. Element	Motif
Painted, under free hand	Purple-Blue, Intense Medium	Wings	Individual A

Woman



Any element showing a female human.

Stylistic Genre: The genre for this stylistic element depends on a combination of decorative technique, color, and element.

Stylistic Genre: None (leave field blank)

Related Stylistic Element Data:

DecTech	Color	Sty. Element	Motif
Sprig Molded	No Applied Color	Woman	Individual A
Sprig Molded	No Applied Color	Child	Individual A